

**DEVELOPMENT DATA:**

OWNER: CITY OF ROCKINGHAM  
 PO BOX 504  
 ROCKINGHAM, NC, 28330

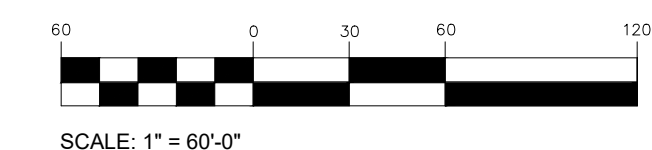
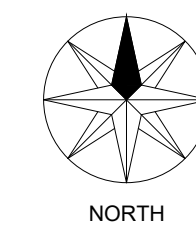
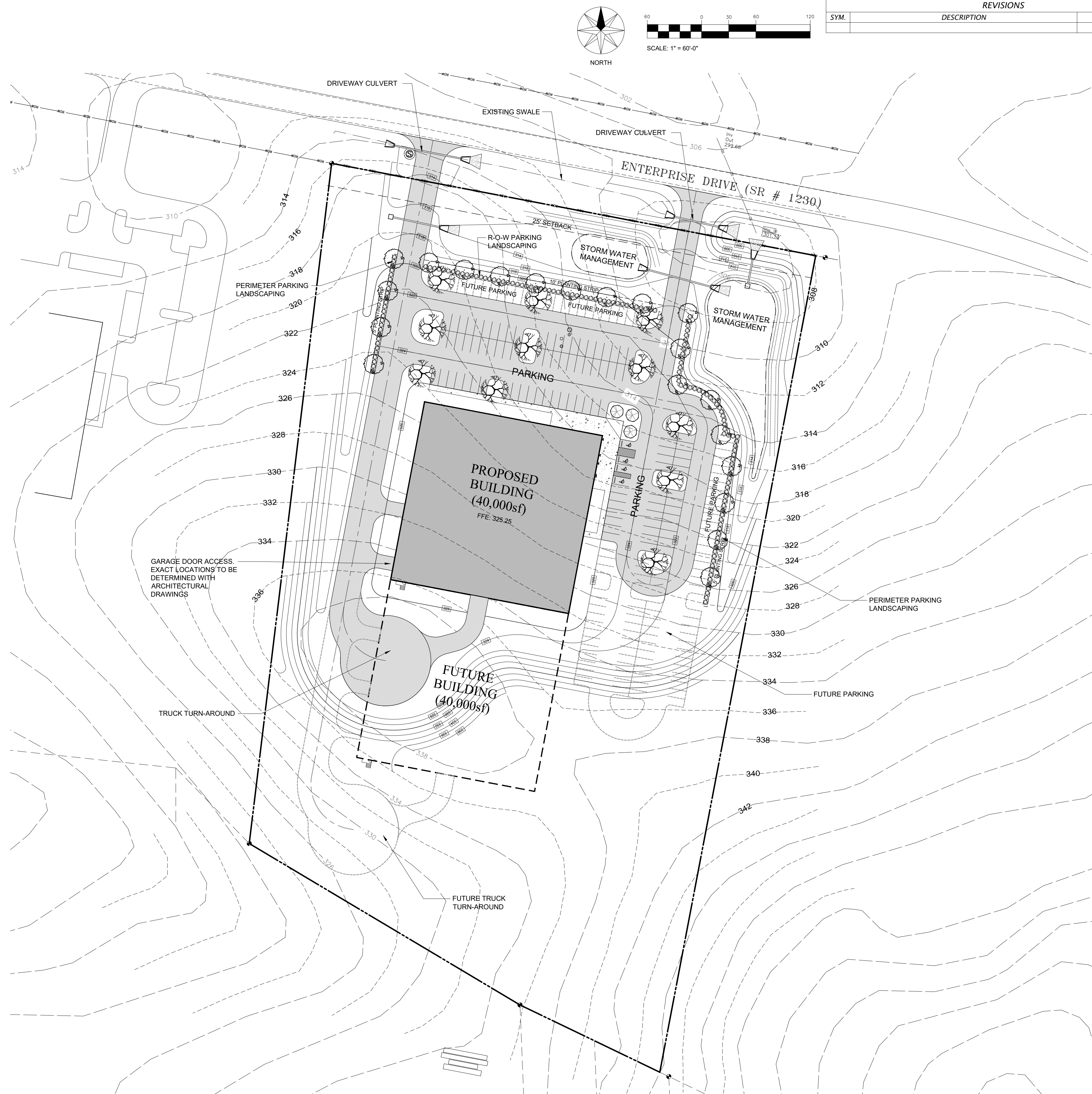
PIN#: 745400637193  
 DEED BOOK: 867. PAGE 454  
 ZONING(CURRENT): I-1 LIGHT INDUSTRIAL  
 PROTECTED WATERSHED: NONE  
 FLOOD ZONE: NONE

PROPERTY SETBACKS:  
 FRONT: 25'  
 SIDE: 0' (15' RESIDENTIAL)  
 REAR: 0' (20' RESIDENTIAL)

MINIMUM LOT SIZE SIZE: 7,000 sf

PARKING REQUIRED: 1 SPACE/ 400sf BLDG  
 40,000 / 400 = 100 SPACES REQUIRED

PARKING PROVIDED: 100 SPACES  
 HANDICAP PARKING REQUIRED: 4  
 HANDICAP PARKING PROVIDED: 4



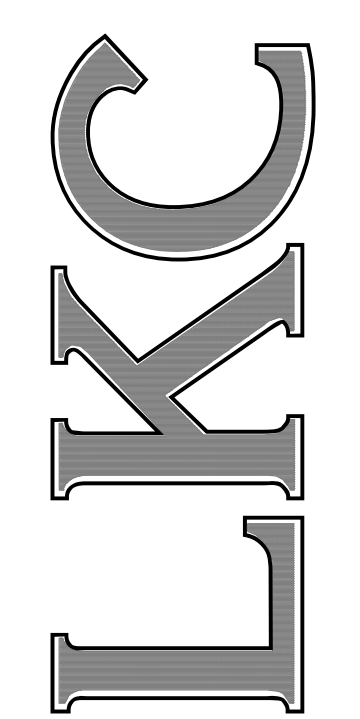
SCALE: 1" = 60'-0"

REVISIONS			
SYM.	DESCRIPTION	DATE	BY

PRELIMINARY - DO NOT USE FOR CONSTRUCTION

LKC Engineering, pllc  
 140 Aqua Shed Court  
 Aberdeen, NC 28315  
 O: 910.420.1437  
 F: 910.637.0096  
 lkceengineering.com  
 License No. P-1095

Engineering  
 Landscape Architecture  
 Planning



Conceptual Site Plan

Proposed Development  
 for  
 West Industrial Park  
 Rockingham, North Carolina

DATE: November 8, 2017
DESIGNED:
DRAWN:
CHECKED:
NO.