

ROLESVILLE

NORTH CAROLINA

In just 14 years **Rolesville's population has grown from 900 residents to more than 5,000**. This 550% growth rate is even more impressive when you consider that it occurred during one of our nation's deepest recessions.

COMMUNITY DEMOGRAPHICS



Population growth: 7,581 (2017).
58% growth from 2000 - 2017¹



Educational attainment: 41.9% received their bachelor's degree or higher²



Median household income: \$77,253²



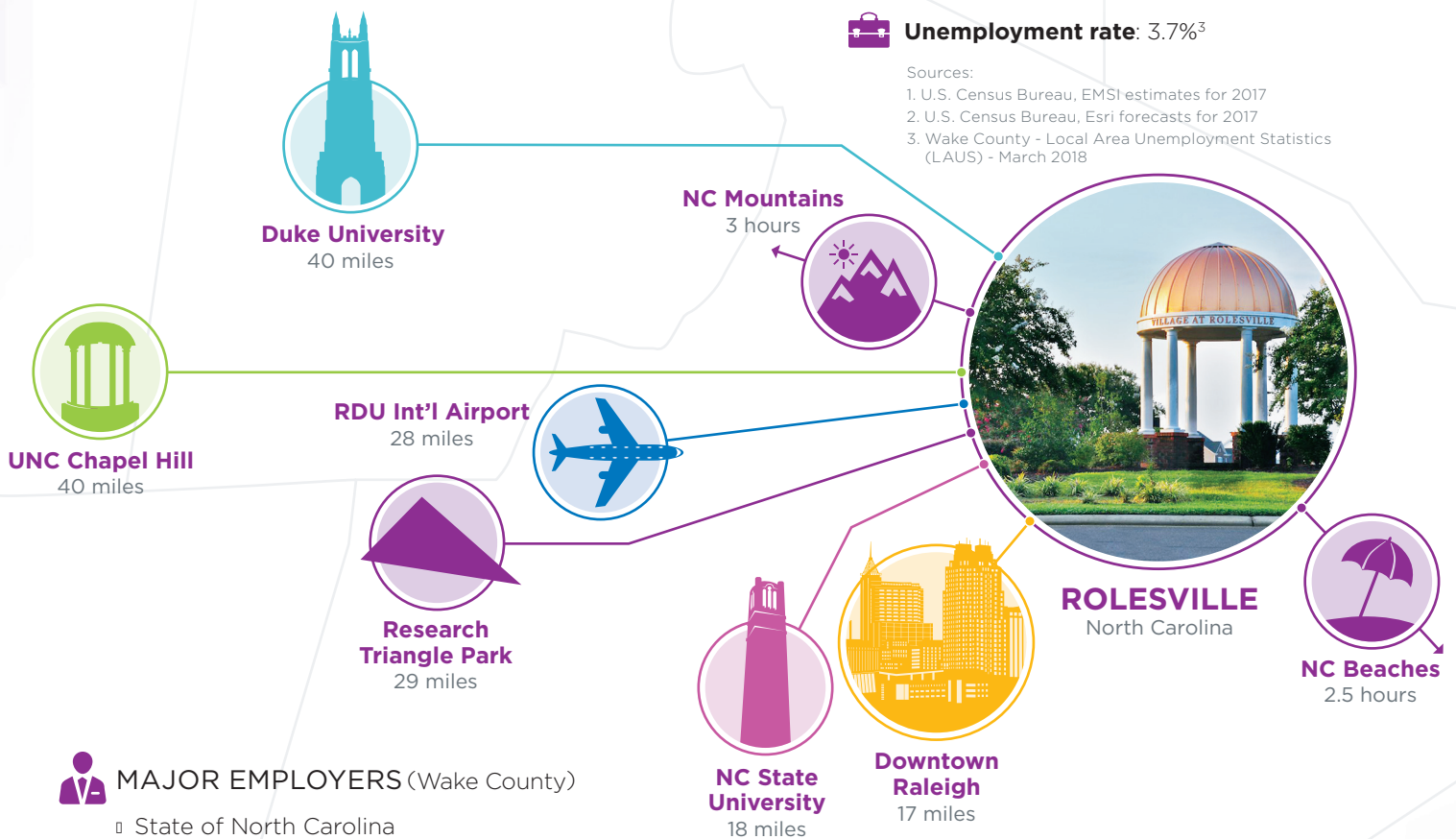
Median home price: \$271,117²



Unemployment rate: 3.7%³

Sources:

1. U.S. Census Bureau, EMSI estimates for 2017
2. U.S. Census Bureau, Esri forecasts for 2017
3. Wake County - Local Area Unemployment Statistics (LAUS) - March 2018



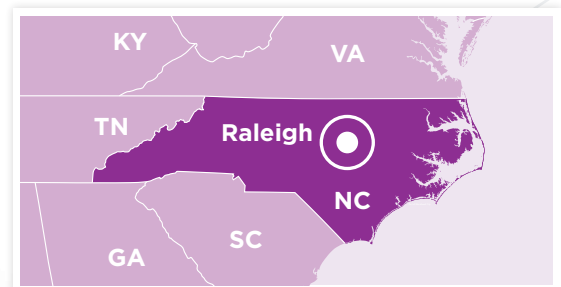
MAJOR EMPLOYERS (Wake County)

- ▣ State of North Carolina
- ▣ Wake County Public School System
- ▣ IBM Corporation
- ▣ WakeMed Health & Hospitals



KEY INDUSTRIES

- ▣ Advanced Manufacturing
- ▣ Game Development/Interactive Digital Media
- ▣ Life Sciences





Large residential developments are popping up in Rolesville to meet the demand of a growing number of homebuyers.



The community's small town charm is evident at events like the annual Christmas parade.



Rolesville has three parks, many acres of open space, and miles of trails for residents to utilize.



Best Suburbs to Buy a House in North Carolina

Nice, April 2018



Rolesville was recently named the fastest growing town in North Carolina

U.S. Census Bureau, 2018

To learn more about our growing business community, or living in Rolesville, please contact us or visit us online.



Wake County Economic Development
800 S. Salisbury St. | Raleigh, NC 27602
919-664-7042 | raleigh-wake.org



Town of Rolesville
502 Southtown Circle | Rolesville, NC 27571
919-556-3506 | rolesvillenc.gov

[@RolesvilleNC1](https://twitter.com/RolesvilleNC1)
[@Rolesville](https://twitter.com/Rolesville)