

APEX

NORTH CAROLINA

Once known only as a stop along the railroad, **Apex (fondly known today as the “Peak of Good Living”)** is now a thriving community bustling with exceptional high-quality public schools, quick access to Research Triangle Park, and a robust parks and greenway system.

COMMUNITY DEMOGRAPHICS



Population growth: 71,988 (2021).
29.5% growth from 2010 - 2021.¹



Educational attainment: 65% received their bachelor's degree or higher.²



Median household income: \$114,000²



Median home price: \$328,000²



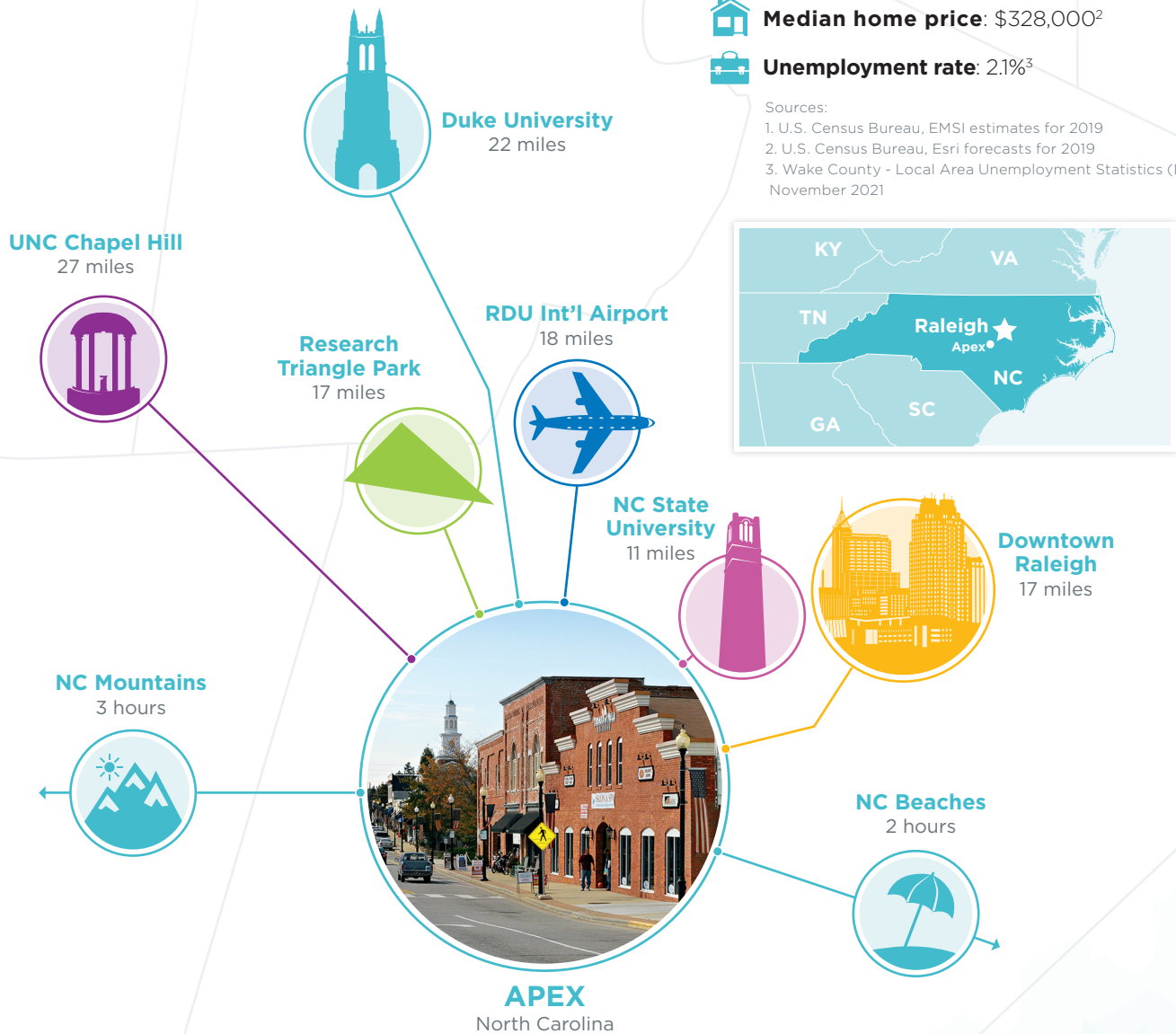
Unemployment rate: 2.1%³

Sources:

1. U.S. Census Bureau, EMSI estimates for 2019

2. U.S. Census Bureau, Esri forecasts for 2019

3. Wake County - Local Area Unemployment Statistics (LAUS)
November 2021



MAJOR EMPLOYERS

- Apex Tool Group
- ATI Industrial Automation
- Dell Technologies
- Polyzen, Inc.
- Bland Landscaping



KEY INDUSTRIES

- Advanced Manufacturing
- Entrepreneurism
- Information Technology
- Life Sciences
- Technology

Major corporations like Dell Technologies provide competitive wages to citizens in our community.



New industry recruitment is a vital part of our local economy.

Greenways, interactive parks and recreation programs, and the upcoming 92-acre Pleasant Park all contribute to the high quality of life found in Apex.



#1 Fastest Growing Suburb in America

Realtor.com | 2018



Top 2% for Best Small Cities in U.S.

WalletHub | 2019



#3 Best Suburb to Raise a Family in NC

Niche | 2022

To learn more about our growing business community, or living in Apex, please contact us or visit us online.



WAKE COUNTY
ECONOMIC DEVELOPMENT

Wake County Economic Development
800 S. Salisbury St. | Raleigh, NC 27602
919-664-7042 | raleigh-wake.org



Apex Economic Development
220 N Salem Street, Suite 100 | Apex, NC 27502
919-372-7461 | apexeconomicdevelopment.org

[f Apex Economic Development](#)
[@ApexEconDev](#)
[Apex Economic Development](#)