

# ZEBULON

## NORTH CAROLINA

The Town of Zebulon is Wake County's eastern-most community, and it's also **one of the area's best-kept secrets**. Its location along I-495 offers easy access to the entire Research Triangle region, yet it remains far enough from the hustle and bustle to provide residents with authentic small town charm. It's also home to one of the largest pharmaceutical manufacturing facilities on the east coast, and serves as the headquarters for one of the world's leading producers of wine corks.

### COMMUNITY DEMOGRAPHICS



**Population growth:** 4,591 (2013).  
14% growth from 2000 - 2013.



**Educational attainment:** 58.5% received their bachelors degree or higher.<sup>1</sup> (Wake County)



**Median household income:** \$52,599

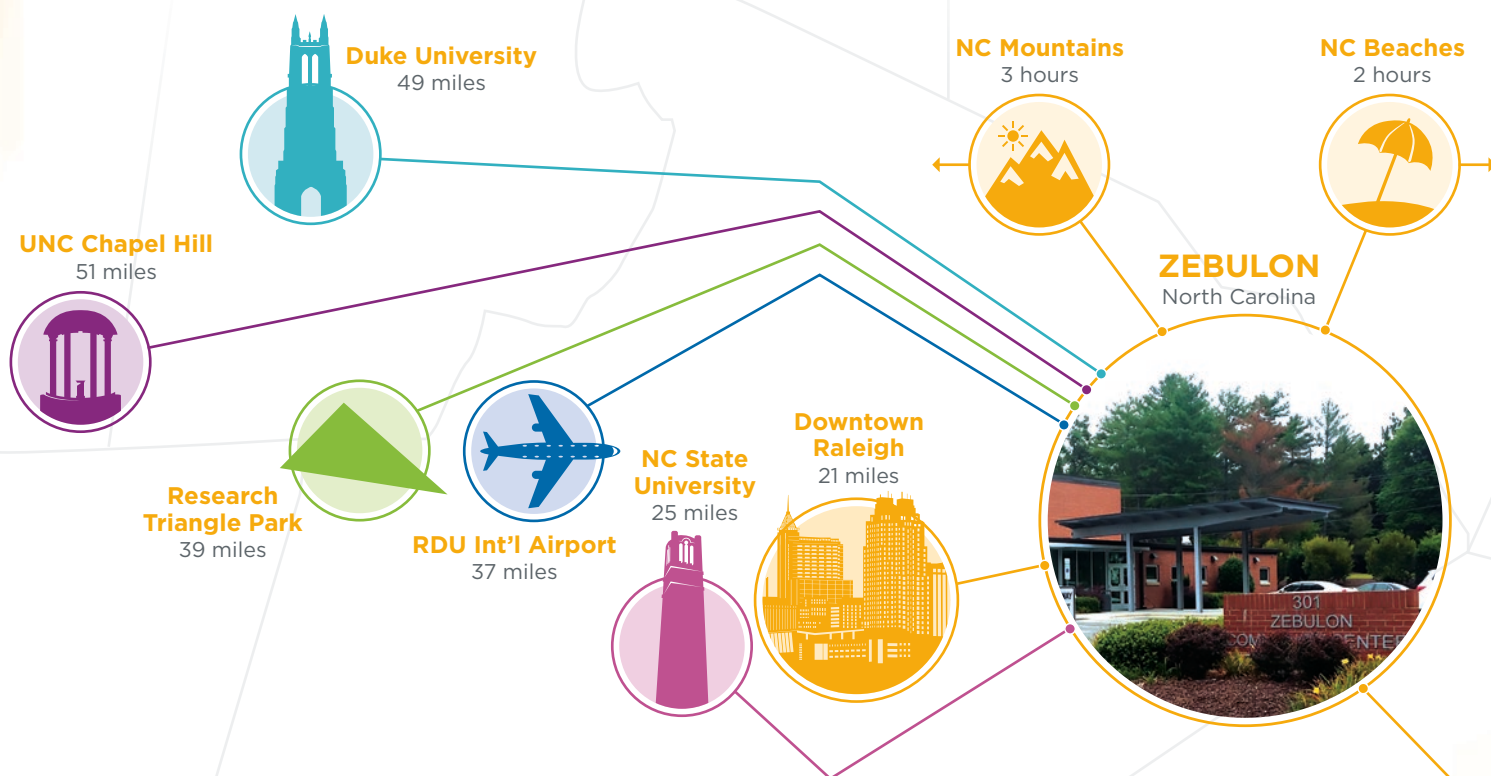


**Median home price:** \$111,100



**Unemployment rate:** 5.3% (Wake County)

Source: US Census Bureau, US Department of Labor.  
1) 25+ years of age.



### MAJOR EMPLOYERS

- GlaxoSmithKline
- US Food Service
- Nomacorc

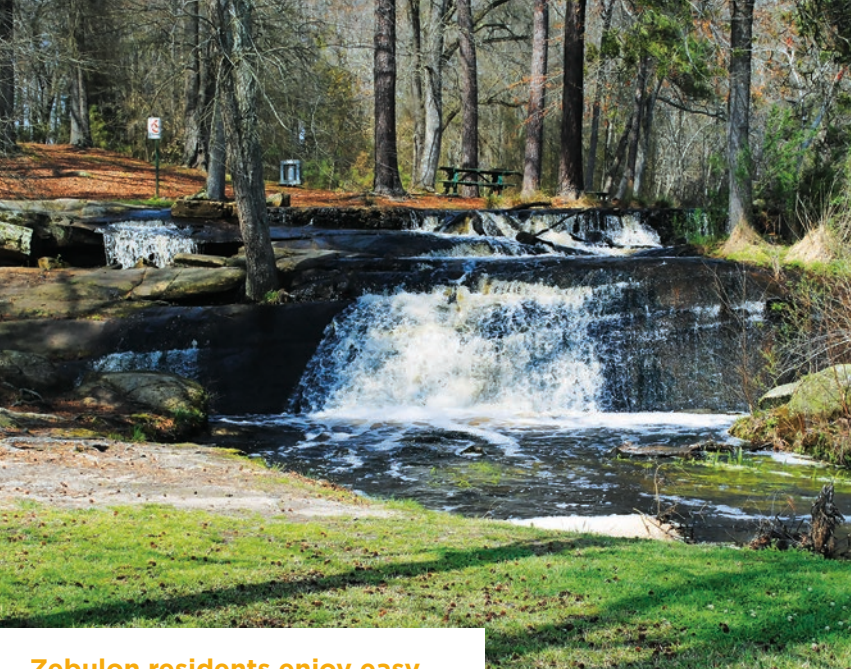


### KEY INDUSTRIES

- Life Sciences
- Advanced Manufacturing
- Distribution







**Zebulon residents enjoy easy access to parks and open space.**



**Zebulon's Town Hall is located in the historic Wakelon School.**



**Five County Stadium is home to the Carolina Mudcats, the Class A advanced affiliate of the Atlanta Braves.**



**#1 Best Metro for Home-Ownership (Raleigh-Cary)**

*NerdWallet, 2014*



**#4 Metro for Economic Growth (Raleigh-Cary)**

*CityLab, 2015*

To learn more about our growing business community, or living in Zebulon, please contact us or visit us online.



Wake County Economic Development  
800 S. Salisbury St. | Raleigh, NC 27602  
919-664-7042 | [raleigh-wake.org](http://raleigh-wake.org)



Town of Zebulon  
1003 N. Arendell Avenue | Zebulon, NC 27597  
919-269-7455 | [townofzebulon.org](http://townofzebulon.org)