

# ROLESVILLE

## NORTH CAROLINA

In just 14 years **Rolesville's population has grown from 900 residents to more than 5,000**. This 550% growth rate is even more impressive when you consider that it occurred during one of our nation's deepest recessions.

### COMMUNITY DEMOGRAPHICS



**Population growth:** 5,014 (2014).  
550% growth from 2000 - 2014.



**Educational attainment:** 58.5% received their bachelors degree or higher.<sup>1</sup> (Wake County)



**Median household income:** \$79,917

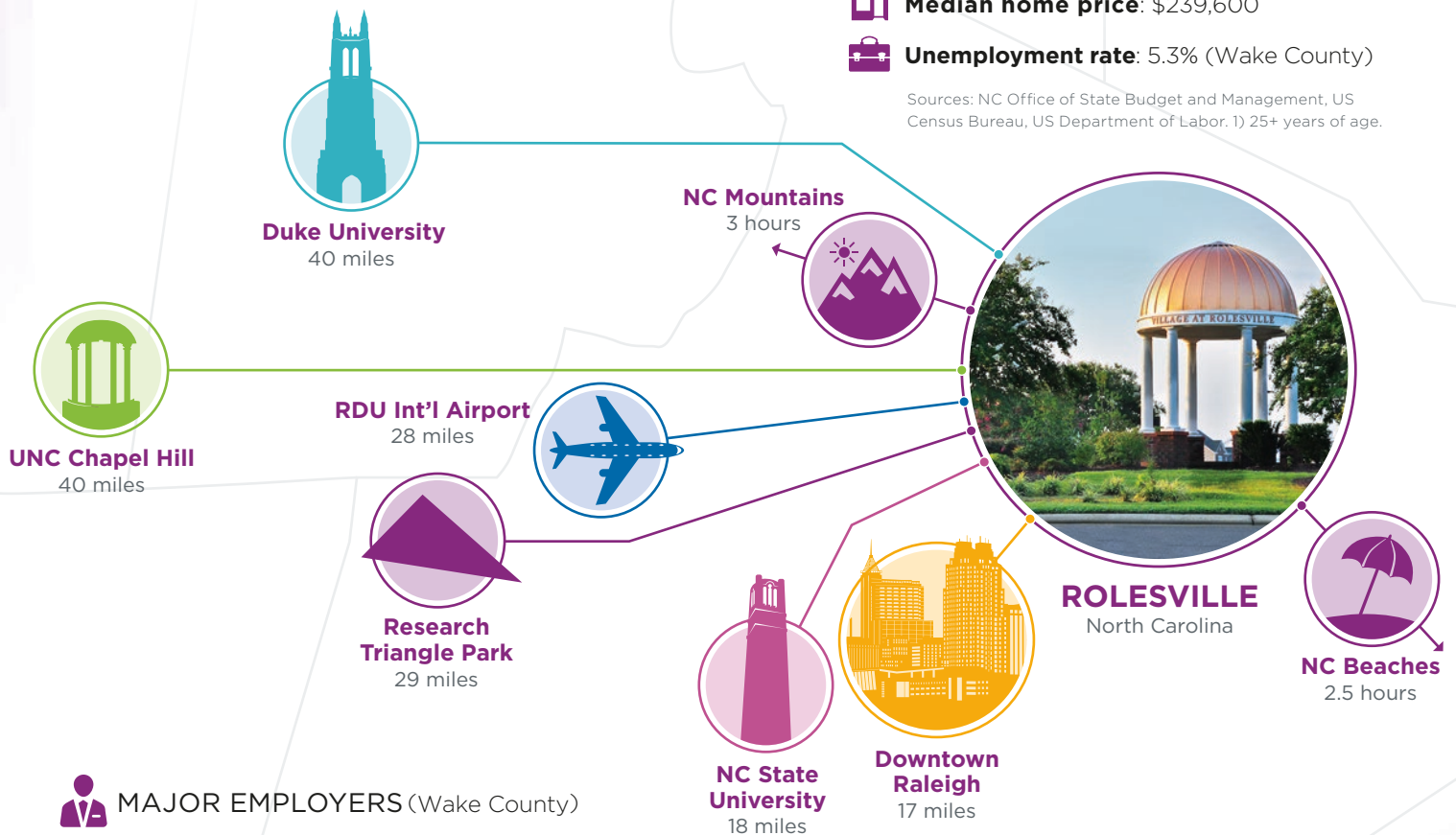


**Median home price:** \$239,600



**Unemployment rate:** 5.3% (Wake County)

Sources: NC Office of State Budget and Management, US Census Bureau, US Department of Labor. 1) 25+ years of age.



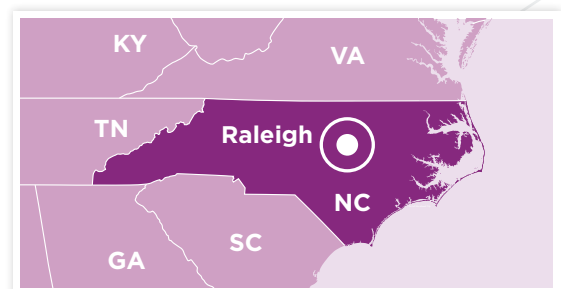
### MAJOR EMPLOYERS (Wake County)

- State of North Carolina
- Wake County Public School System
- IBM Corporation
- WakeMed Health & Hospitals



### KEY INDUSTRIES

- Advanced Manufacturing
- Game Development/Interactive Digital Media
- Life Sciences







Large residential developments are popping up in Rolesville to meet the demand of a growing number of homebuyers.



The community's small town charm is evident at events like the annual Christmas parade.



Rolesville has three parks, many acres of open space, and miles of trails for residents to utilize.



#2 Safest Major Metro in the U.S. (Raleigh-Cary, NC)

Gallup, April 2013



Rolesville was recently named the fastest growing town in North Carolina.

U.S. Census Bureau, 2014

To learn more about our growing business community, or living in Rolesville, please contact us or visit us online.



Wake County Economic Development  
800 S. Salisbury St. | Raleigh, NC 27602  
919-664-7042 | [raleigh-wake.org](http://raleigh-wake.org)



Town of Rolesville  
502 Southtown Circle | Rolesville, NC 27571  
919-556-3506 | [rolesvillenc.gov](http://rolesvillenc.gov)