

# CARY

## NORTH CAROLINA

Targeted investments in quality of life amenities, education and public infrastructure have made the **Town of Cary an incredibly appealing location for both residents and businesses.** With more than 150,000 residents, this “town” is now the seventh largest city in the state of North Carolina.

### COMMUNITY DEMOGRAPHICS



**Population growth:** 149,513 (2013).  
58% growth from 2000 - 2013.



**Educational attainment:** 62.2%  
received their bachelors degree or higher.<sup>1</sup>



**Median household income:** \$90,250

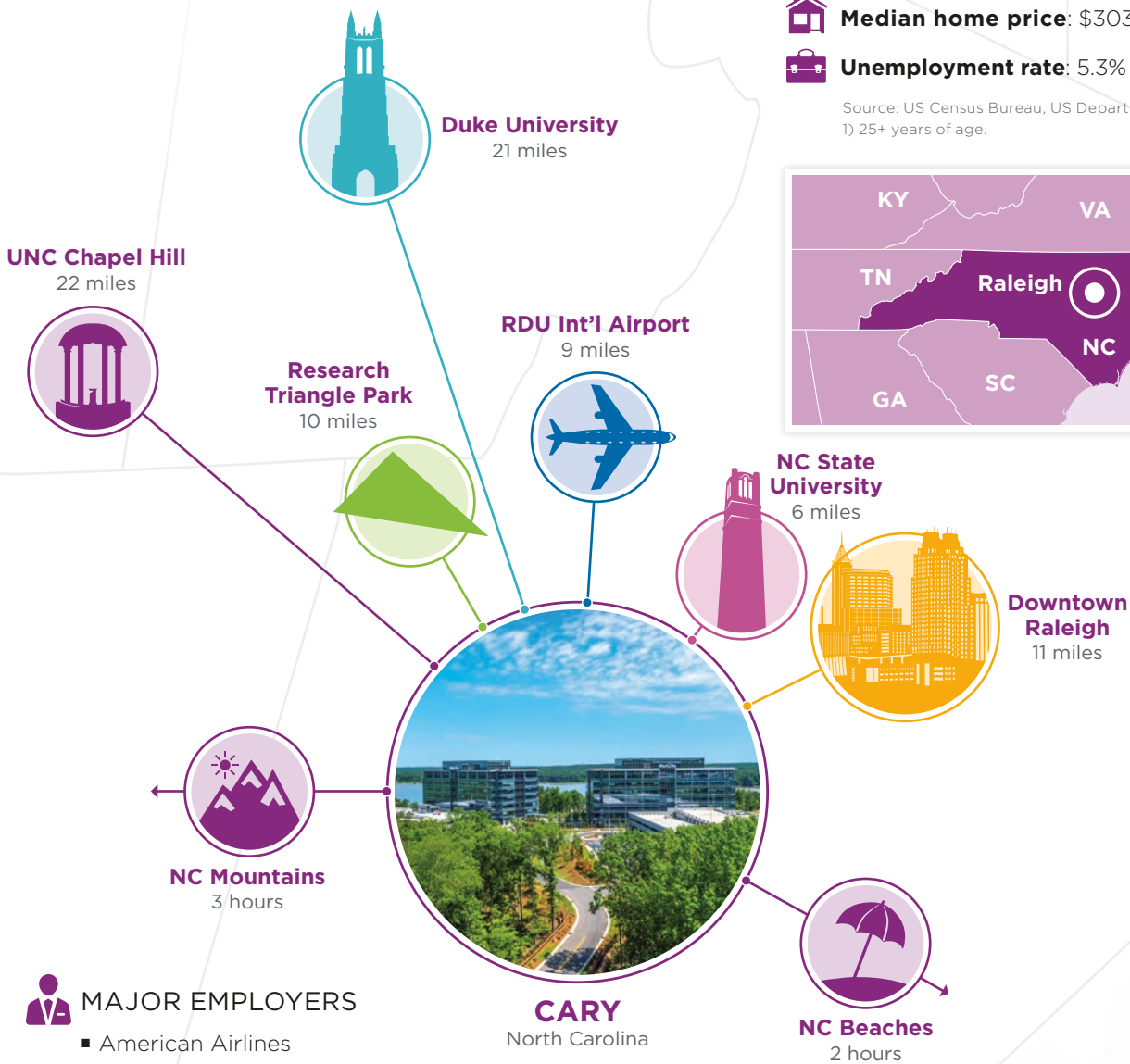
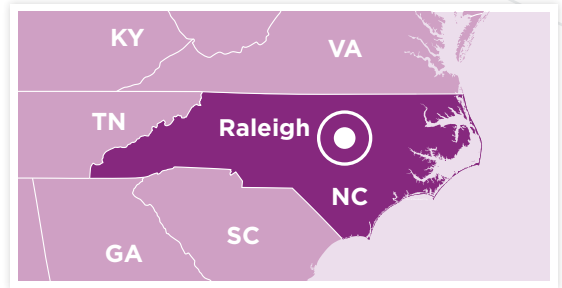


**Median home price:** \$303,700



**Unemployment rate:** 5.3% (Wake County)

Source: US Census Bureau, US Department of Labor.  
1) 25+ years of age.



### MAJOR EMPLOYERS

- American Airlines
- John Deere
- Kellogg's Snacks
- Lord Corporation
- MetLife
- SAS Institute
- Siemens Medical Solutions USA
- Verizon Wireless



### KEY INDUSTRIES

- Life Sciences
- Technology
- Cleantech



Cary has over 30 public parks and natural areas, a greenway system of over 70 miles, and four sports venues.

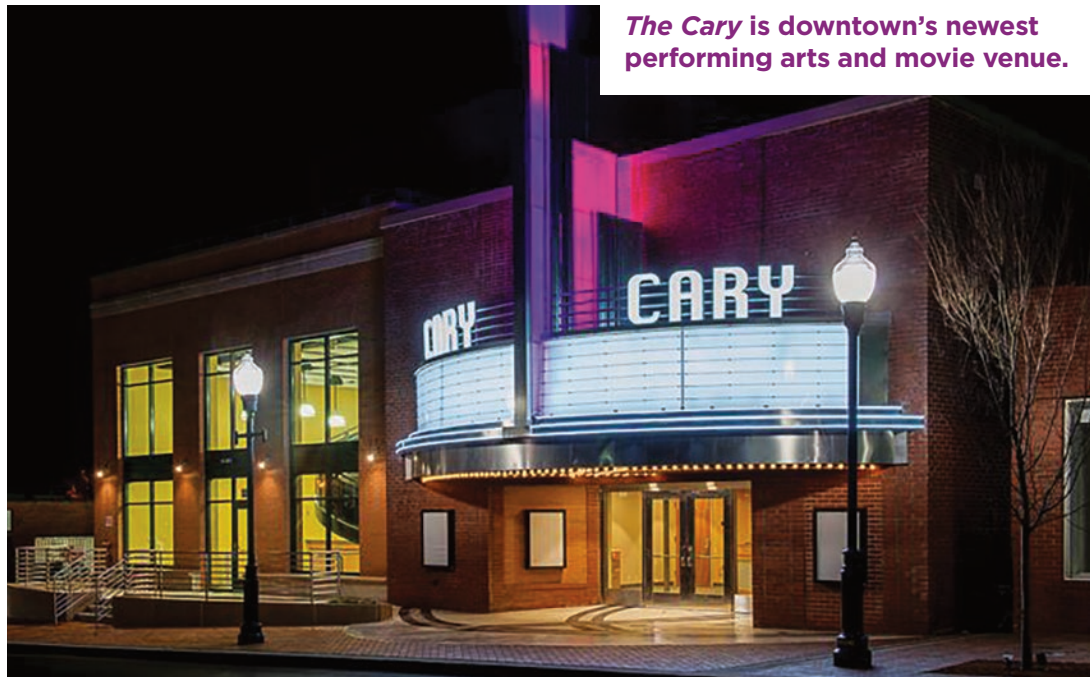


“We know first-hand why Wake County has a great reputation for technology talent. The engineers, software developers, and project managers based here inspire our teams around the world.”

Geoffrey Lang, VP and GM of MetLife’s Global Technology Campus, Cary, NC



The Cary is downtown’s newest performing arts and movie venue.



#1 Among Family-Friendly Cities in the U.S.

Human Life Project, 2013



#2 Fastest Growing Metro through 2020 (Raleigh-Cary).

US Metro Economics, 2014

To learn more about our growing business community, or living in Cary, please contact us or visit us online.



WAKE

Wake County Economic Development  
800 S. Salisbury St. | Raleigh, NC 27602  
919-664-7042 | [raleigh-wake.org](http://raleigh-wake.org)



Cary Chamber of Commerce  
307 N. Academy Street | Cary, NC 27513  
919-467-1016 | [carychamber.com](http://carychamber.com)