

HOW COVID-19 IS SHIFTING CORPORATE LOCATION STRATEGY

**Information based on survey of Site Selectors Guild members, week of June 29, 2020*

Top Mid-Size Cities for New Projects

- Boise, ID
- Colorado Springs, CO
- Columbia, SC
- Columbus, OH
- Greenville, SC
- Huntsville, AL
- Indianapolis, IN
- Kansas City, MO
- Raleigh-Durham, NC
- Reno, NV
- Tucson, AZ

**Guild members named mid-size cities that would be strong candidates for new projects (listed in alpha order)*

Are Corporate Location Decisions Moving Forward?

61%

say companies are moving forward with site selection projects

34%

say companies are pausing site selection projects

5%

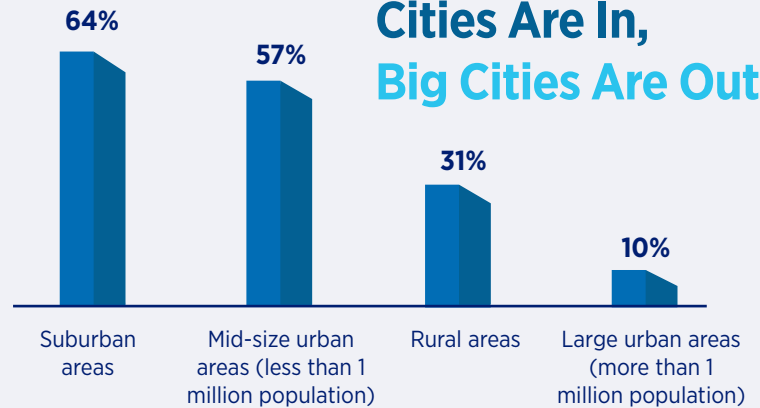
say companies are canceling site selection projects or consolidating facilities

When Will the Majority of Project Activity Resume?

69%

predict 2021

Suburbs & Mid-Size Cities Are In, Big Cities Are Out



**Percentage of Consultants Rating Location Types as "Likely" or "Highly Likely" for an expansion/relocation project in the 12 months.*

Industries With the Most Project Activity



67%

Biotech and Life Sciences



51%

Advanced Manufacturing



47%

Food and Beverage Processing



44%

Transportation and Logistics



31%

Software and IT