



Educating Providers. Changing Lives.

September 24-25 | Arlington, VA



FWGBD 2022

FWGBD 2022 brought together nearly 200 physicians, researchers, nurses, social workers, and advocates who focus on the care and treatment of blood and clotting disorders for people with the potential to menstruate. The sessions included expert faculty addressing the management of pain, barriers to clinical research participation, management of pregnancy, gender affirming care, and a special highlight on provider advocacy for reproductive healthcare.

The dynamic group of hematologists, obstetricians, gynecologists, and other specialties had an opportunity to highlight their specific areas to further the collaboration needed to better support their patients. Post-conference highlights include the awareness of disease processes and treatment, especially TXA and DOACs, the most updated recommendations and evidence based approaches to care, and ways to be more inclusive to all patients. These sessions are not the start nor the end of important conversations to be had – please see below for upcoming events hosted by FWGBD.

New Ask-the-Experts Video

Borderline Dosage Considerations

Q: As providers, we struggle with the changing recommendations for dosage, especially when patients are on the (age or weight) border. What guidance do you suggest following?

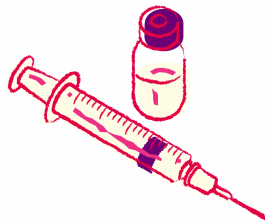
Answered by:

Jacquelyn Powers, MD, MSc, Director, Iron Disorders and Nutritional Anemias Program, Co-Director, Young Women's Bleeding Disorders Clinic, Assistant Professor, Department of Pediatrics, Section of Hematology/Oncology, Baylor College of Medicine, Texas Children's Hospital

Ask-the-Experts is a resource for healthcare providers to ask questions of the Foundation's Board and Medical Advisory Committee. These expert practitioners have recorded a set of Ask-the-Experts videos to answer the most pressing questions.



Upcoming Events

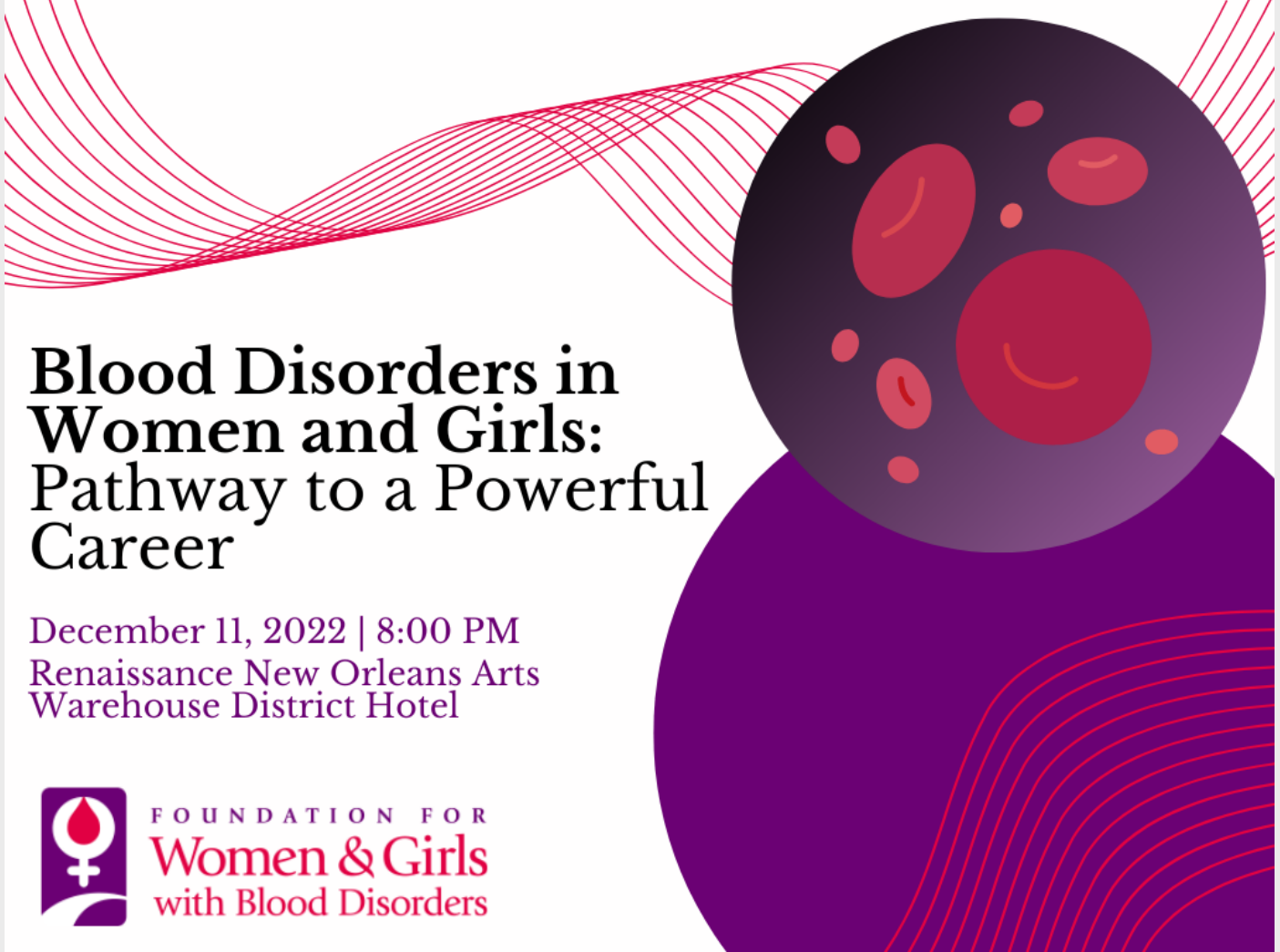


Case Conversation Sutimlimab in Chronic Immune Thrombocytopenia

Wednesday, November 9, 2022
12:00 – 1:00 PM ET

Dr. Catherine Broome will guide us through her recent publication, Safety and Efficacy of Classical Complement Pathway Inhibition with Sutimlimab in Chronic Immune Thrombocytopenia. Dr. Broome will highlight the findings of this study, including how sutimlimab administration was associated with a rapid increase in mean platelet count, that treatment with sutimlimab effectively inhibited Weislab-CP activity and CH50 with a decrease from baseline sustained through the treatment period and return to baseline following treatment discontinuation. The case presentation and discussion will be followed by an interactive Q&A session with participants.

REGISTER TODAY!



Blood Disorders in Women and Girls: Pathway to a Powerful Career

December 11, 2022 | 8:00 PM
Renaissance New Orleans Arts
Warehouse District Hotel



FOUNDATION FOR
Women & Girls
with Blood Disorders

The Foundation for Women & Girls with Blood Disorders is pleased to host, *Blood Disorders in Women and Girls: Pathway to a Powerful Career*. This unique program that will combine education in bleeding disorders and the impact on women and girls with experts in the field of blood disorders. During this dinner and discussion, experts will share their own career pathway and attendees will have an opportunity to talk informally at the dinner table with a leading expert.

We invite fellows, new faculty, and residents in hematology who are attending the **64th ASH Annual Meeting and Exposition** in New Orleans, Louisiana. FWGBD's Pathways will be held at the Renaissance New Orleans Arts Warehouse District Hotel on Sunday, December 11th, 2022, at 8:00 PM.

[Register for Pathways](#)

Education and Recent Research

Fashakin V, Weber JM, Truong T, Craig A, Wheeler SM, James AH. Sickle cell disease and the incidence and etiology of preterm birth. *Am J Obstet Gynecol MFM* 2022;4:100723.

Konkle, BA. The burden of heavy menstrual bleeding. *Blood*. 20 October 2022.

Marshall AL, Sharma D, Hsu G, Pecker LH, Cushman M. Abortion access and the US medical workforce: A looming crisis for haematology. *The Lancet*. 13 October 2022.

Learn more about membership to FWGBD [HERE](#).

Questions?

Contact Jennifer Longo, Database and Membership Services Manager,
at 845-642-2925 or membership@fwgbd.org.



Foundation for Women & Girls with Blood Disorders | PO Box 1358, Montclair, NJ 07042

[Unsubscribe kfunkhouser@fwgbd.org](mailto:kfunkhouser@fwgbd.org)

[Update Profile](#) | [Constant Contact Data Notice](#)

Sent by bykcantu@fwgbd.org in collaboration
with



Try email marketing for free today!