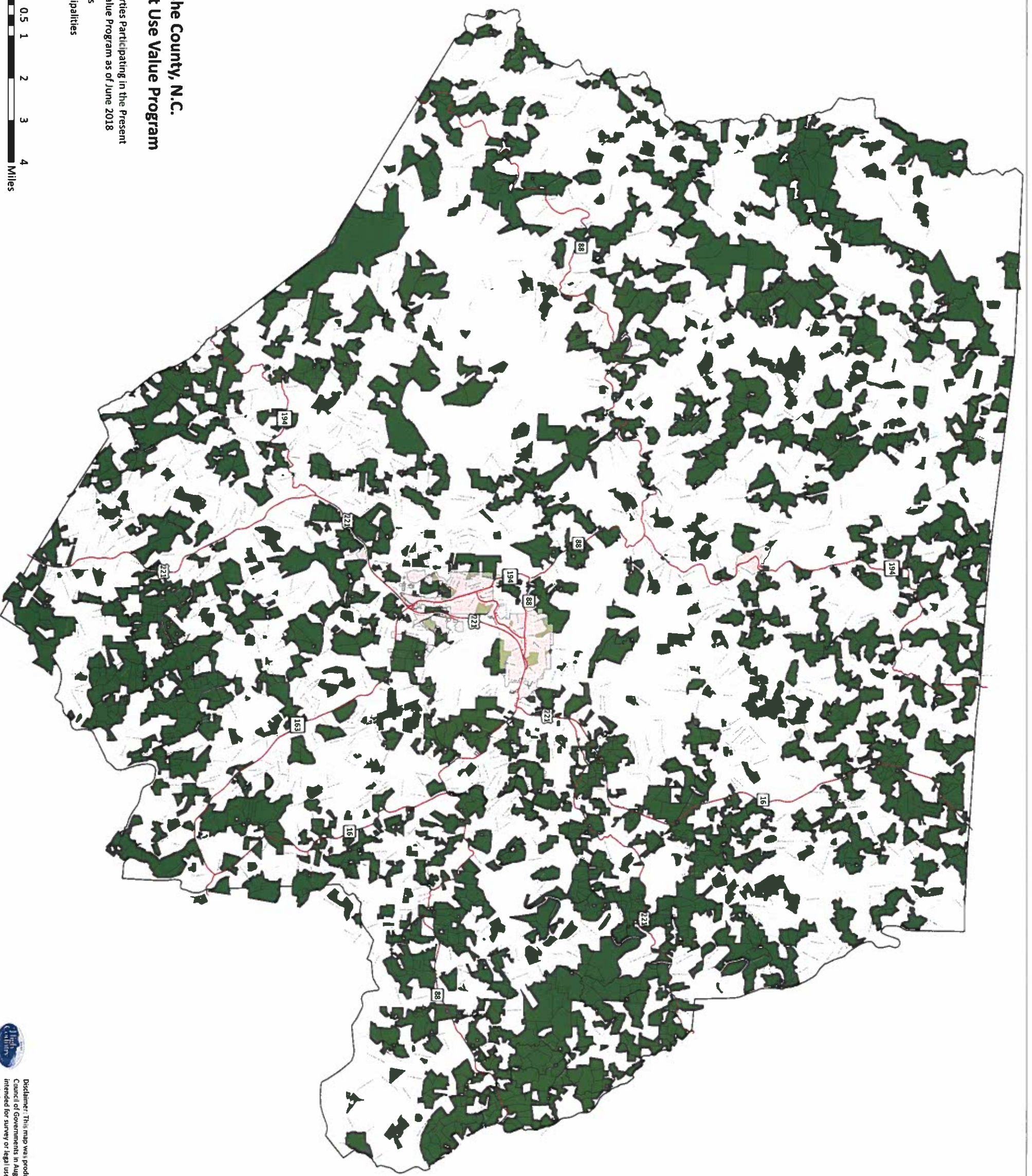




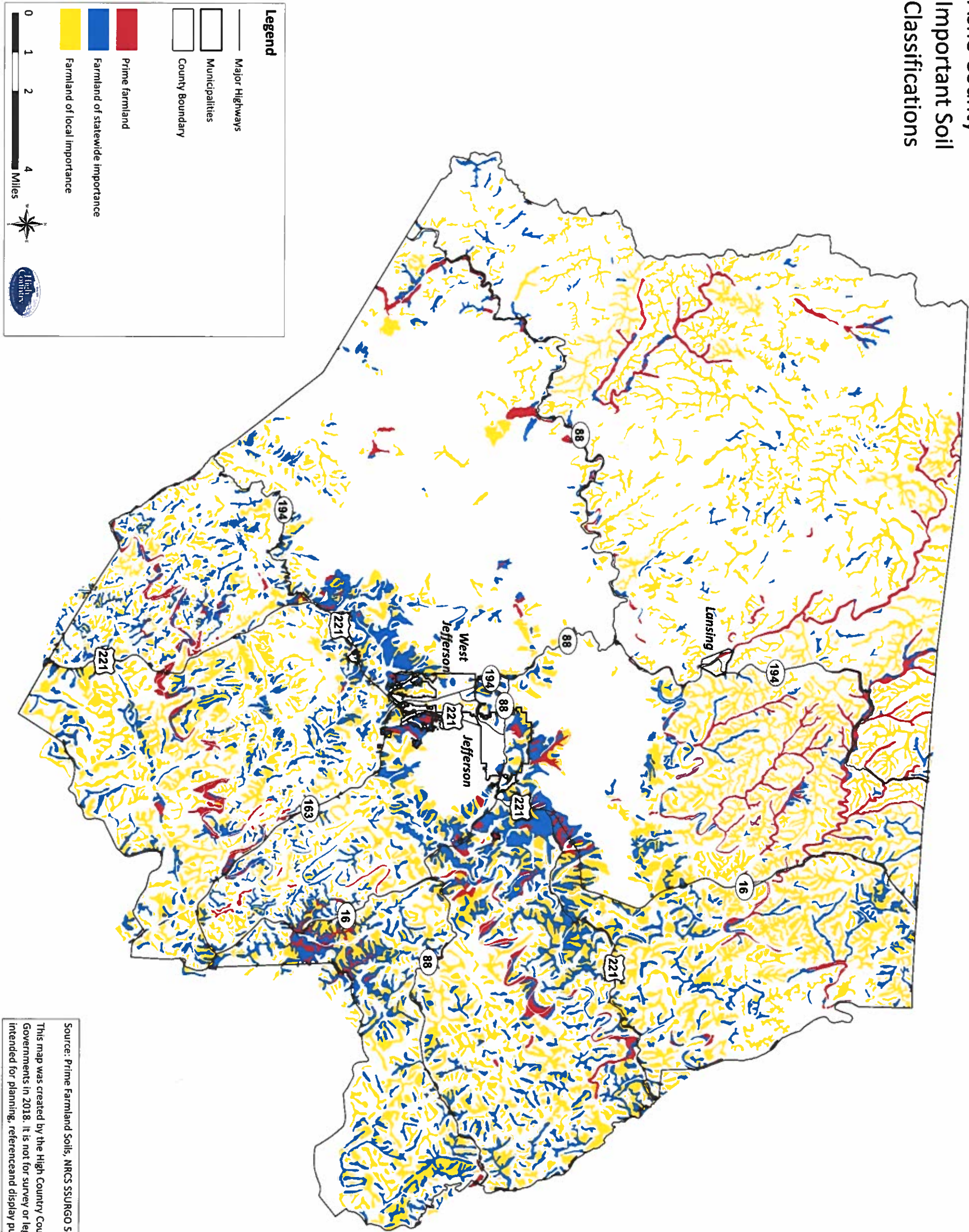
Ashe County, N.C.
Present Use Value Program

- Properties Participating in the Present Use Value Program as of June 2018
- Streets
- Municipalities



Disclaimer: This map was produced by the High Country Council of Governments in August 2018. This map is not intended for survey or legal uses. It is for display, reference, and planning purposes only.

Ashe County
Important Soil
Classifications



Source: Prime Farmland Soils, NRCS SSURGO Soil Data

This map was created by the High Country Council of Governments in 2018. It is not for survey or legal uses. It is intended for planning, reference and display purposes only.

**Ashe County
Streams**

Legend

Municipal Boundaries

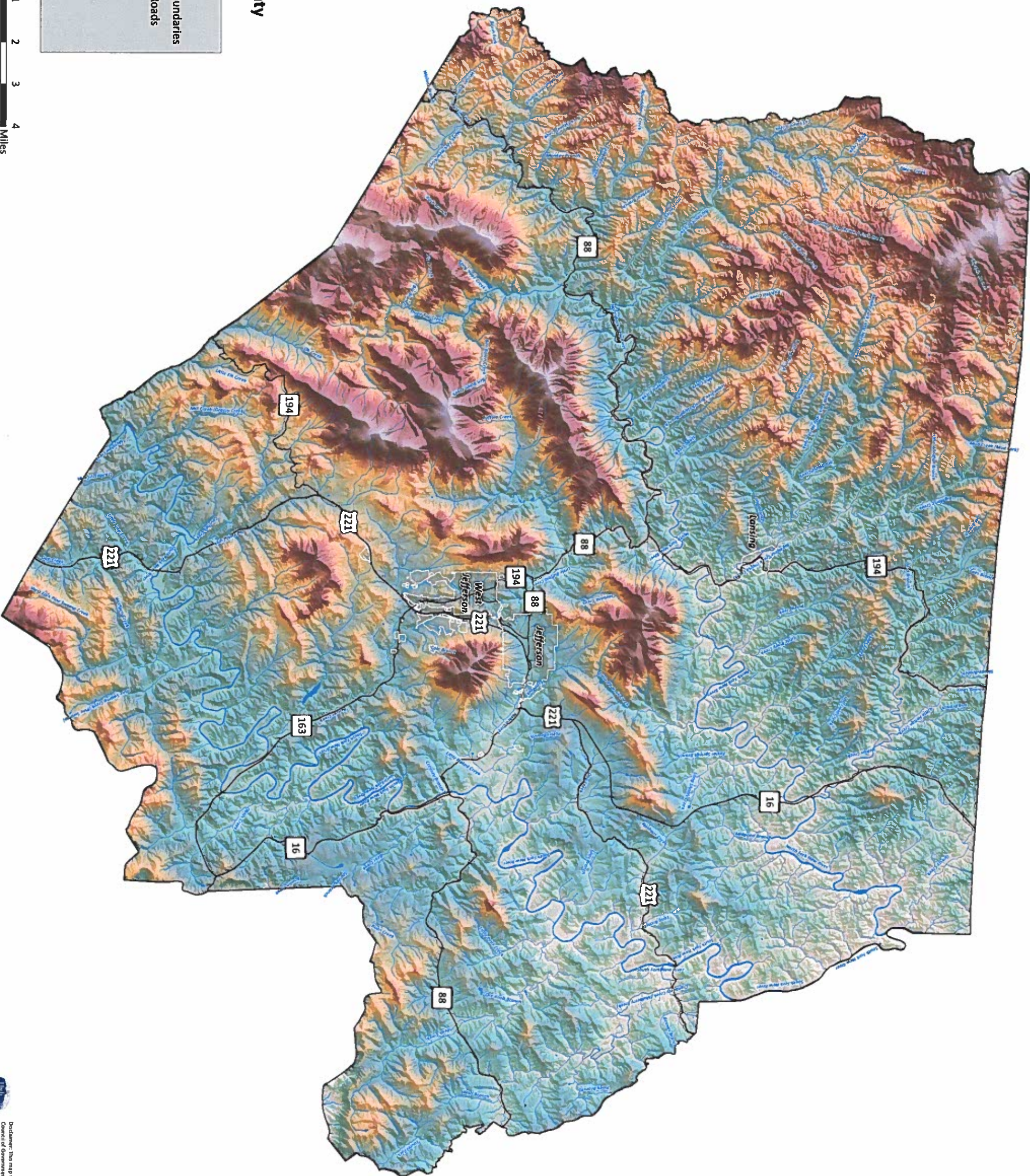
Ashe Major Roads

Streams

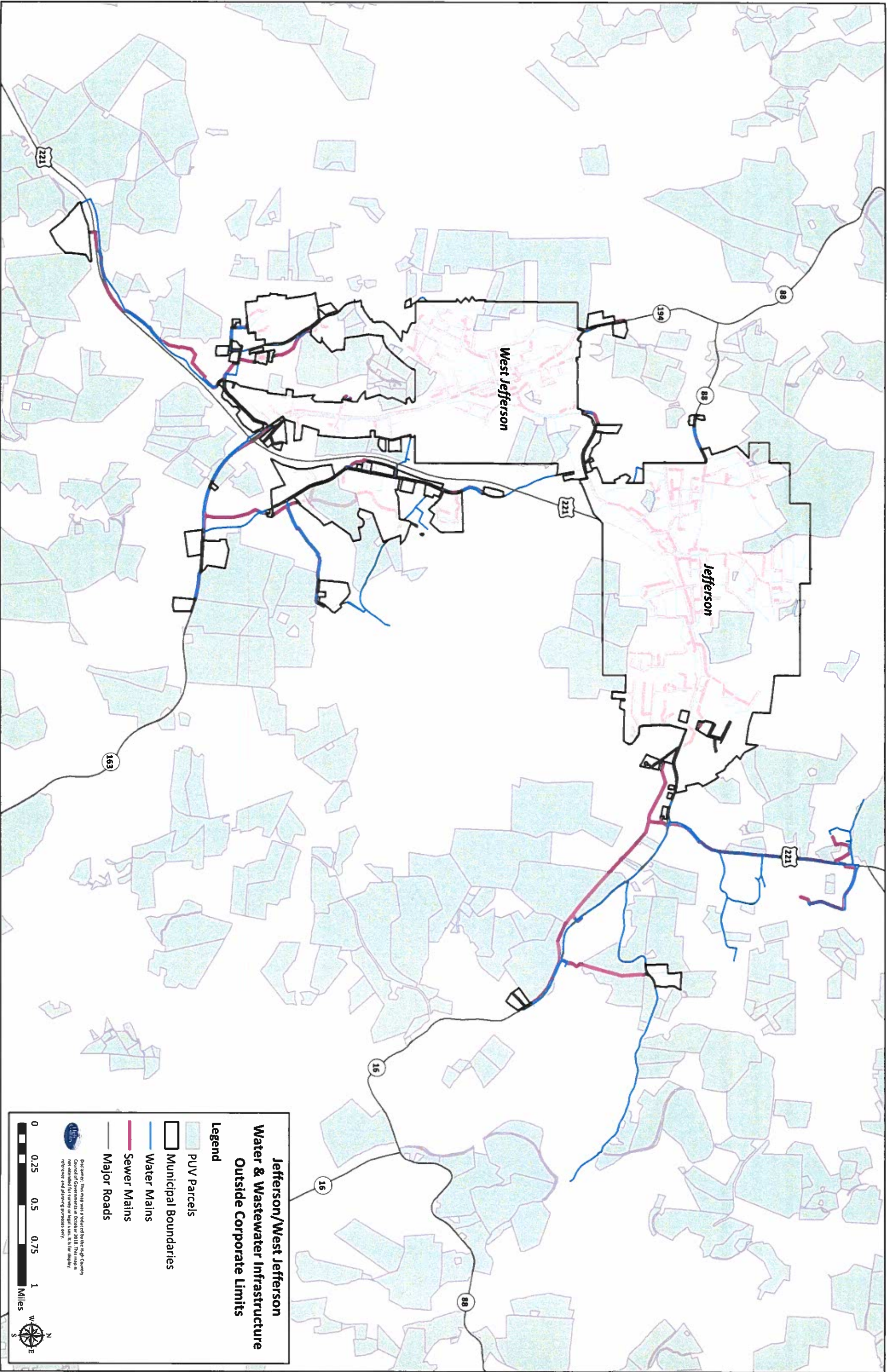
Elevation (ft.)

High : 5210

Low : 2141

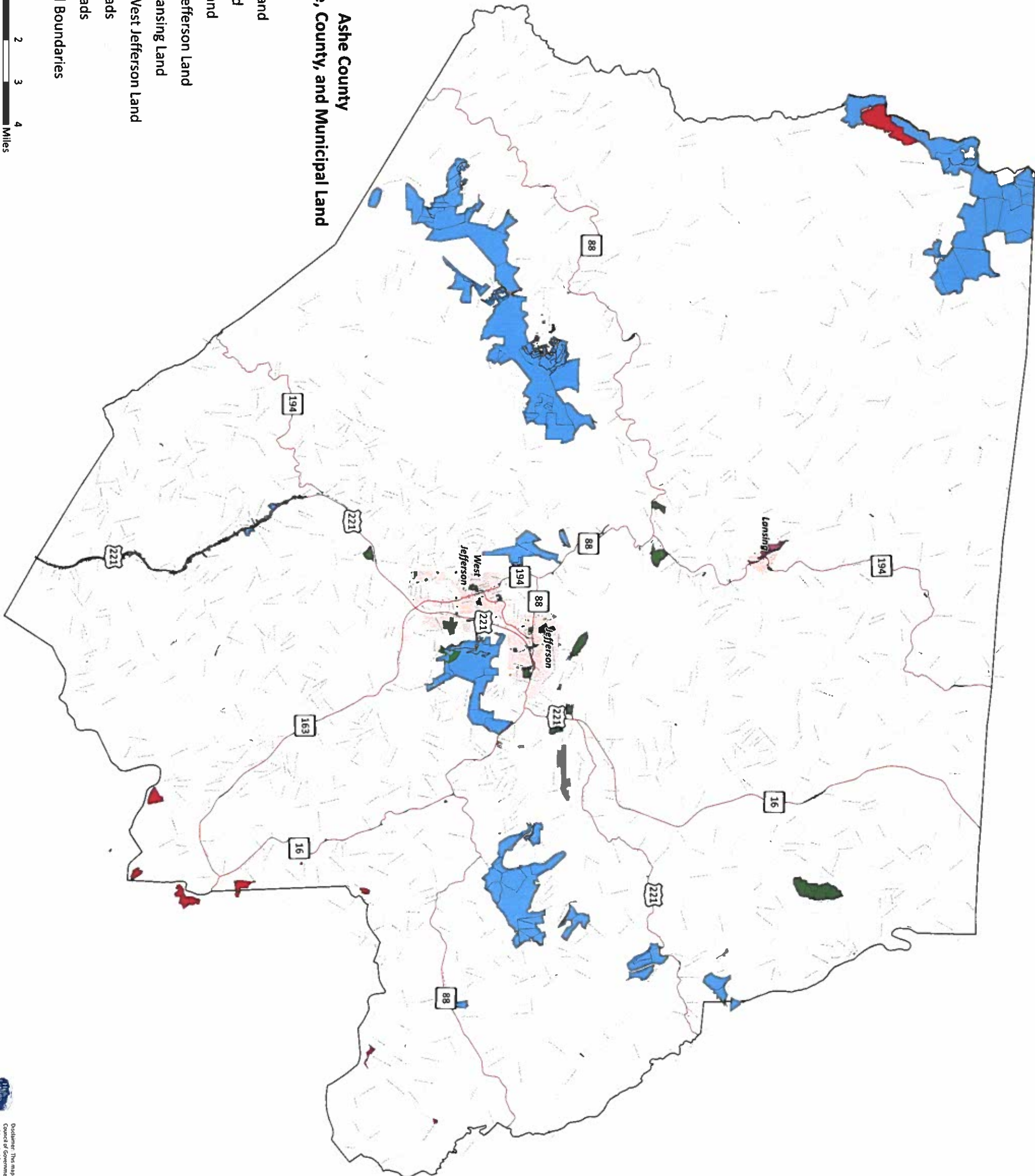


Disclaimer: This map was produced by the High County Council of Governments in September 2018. The map is not intended for survey or legal use. It is for display, reference and planning purposes only.



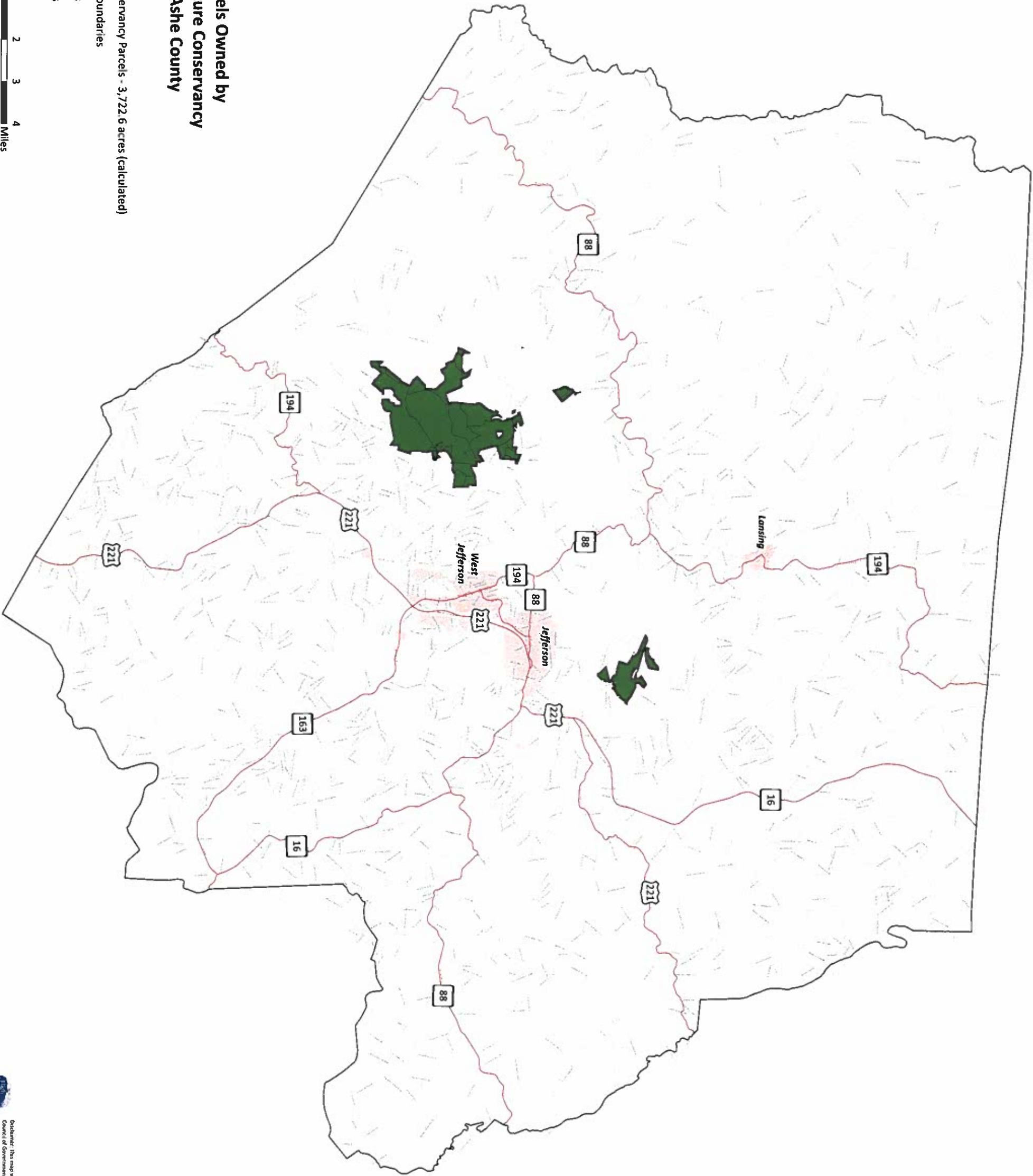


- Ashe County**
Federal, State, County, and Municipal Land
- Legend**
- Federal Land
 - State Land
 - County Land
 - Town of Jefferson Land
 - Town of Lansing Land
 - Town of West Jefferson Land
 - Major Roads
 - Minor Roads
 - Municipal Boundaries



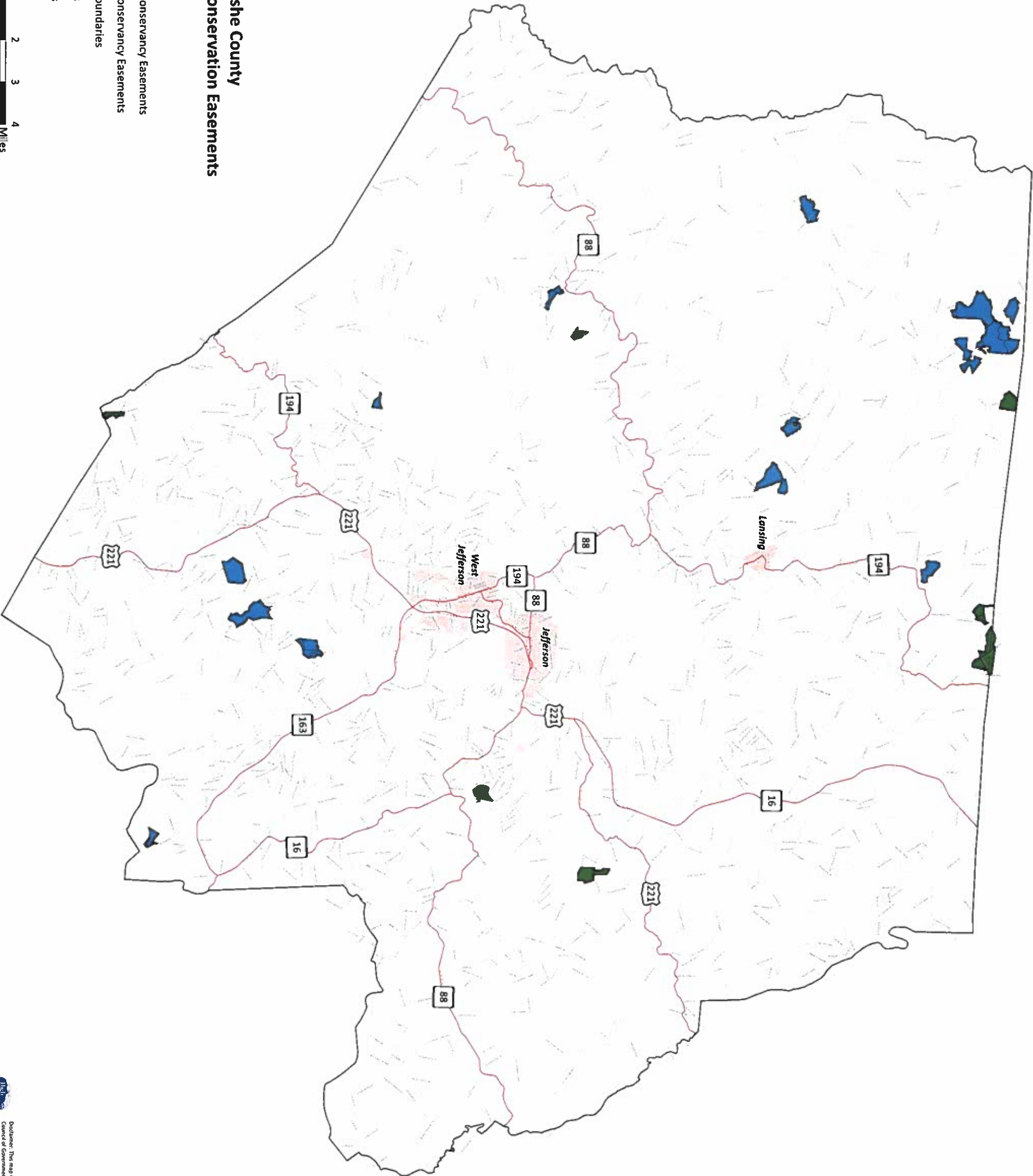
Parcels Owned by The Nature Conservancy in Ashe County

- Legend**
- Nature Conservancy Parcels - 3,722.6 acres (calculated)
 - Municipal Boundaries
 - Major Roads
 - Minor Roads



Ashe County
Farms with Conservation Easements

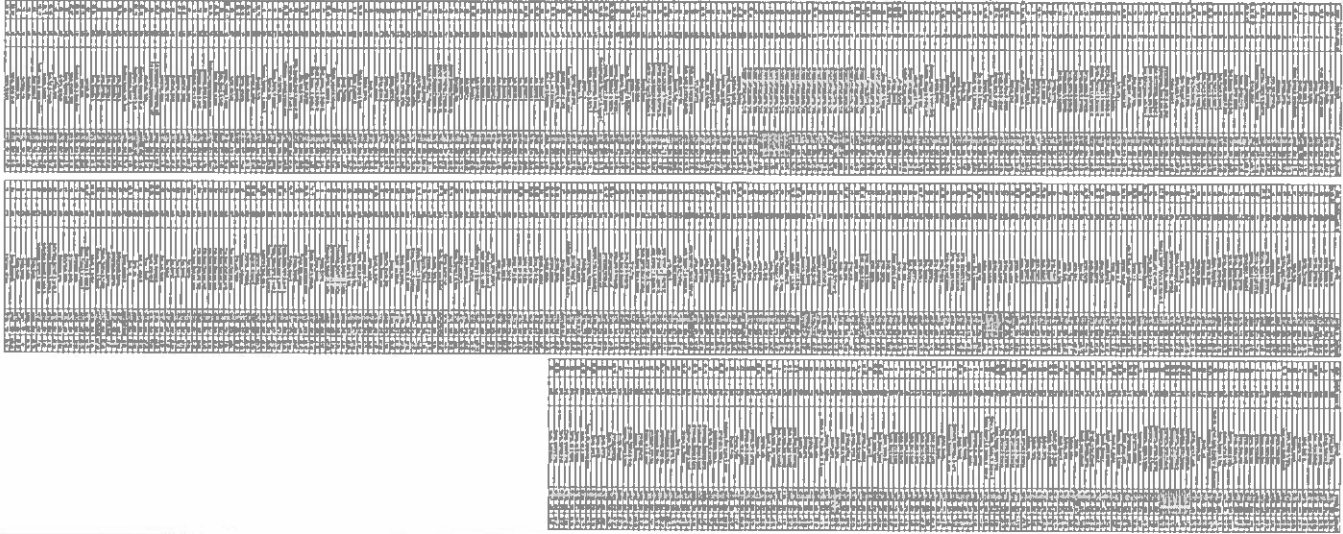
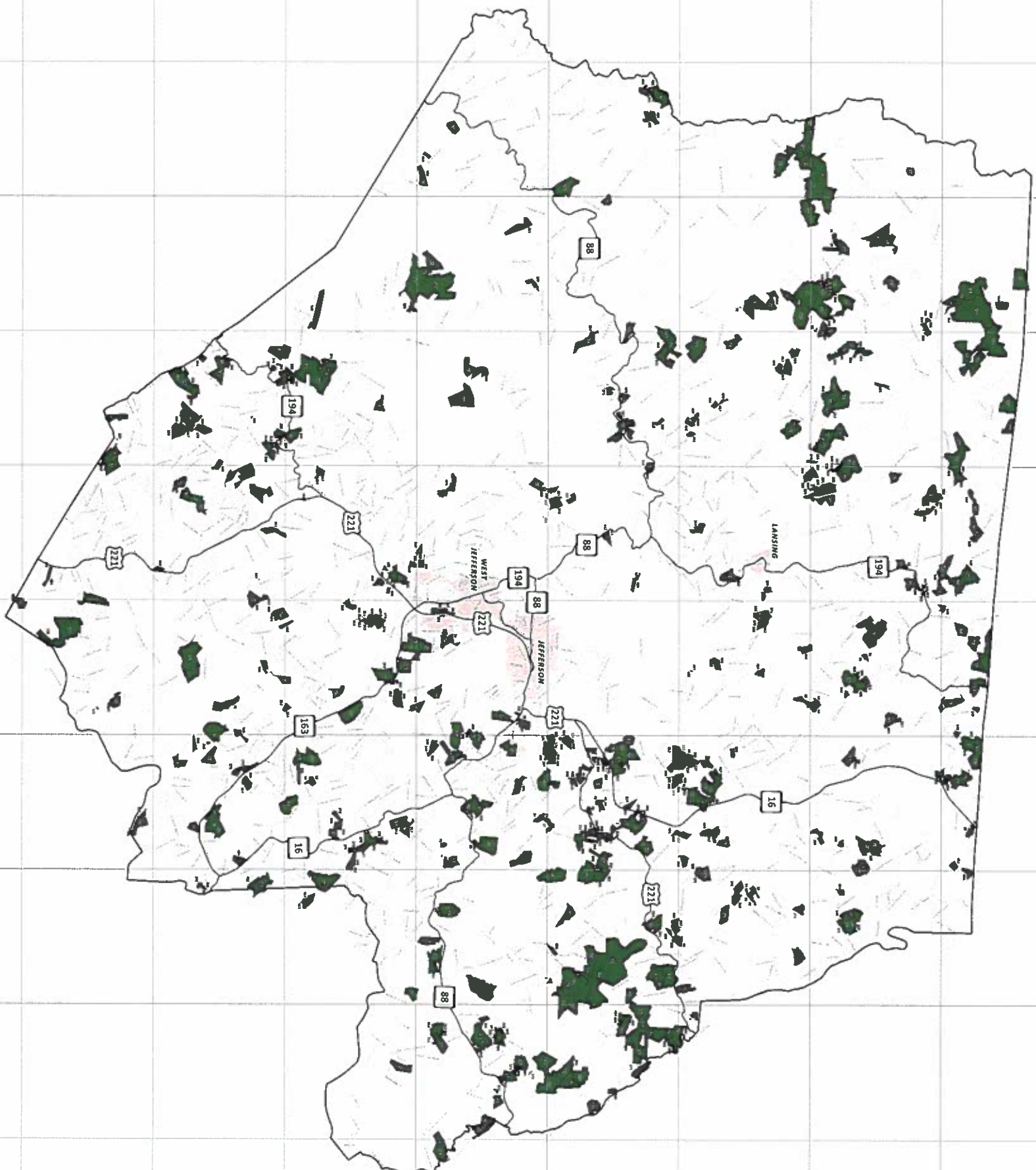
- Legend**
- Blue Ridge Conservancy Easements
 - New River Conservancy Easements
 - Municipal Boundaries
 - Major Roads
 - Minor Roads



Disclaimer: This map was produced by the High Country Council of Governments in September 2018. This map is not intended for survey or legal use; it is for display, reference and planning purposes only.

Ashe County, N.C.
Voluntary Farmland
Preservation Program

- Properties Participating in the
Voluntary Farmland
Preservation Program
- Roads
- Municipal Boundaries



Ashe County, N.C. is a member of the National Farmland Preservation Program. The program is a voluntary, non-profit organization that works to preserve farmland for future generations. The program is a partnership between the county and the National Farmland Preservation Program. The program is a partnership between the county and the National Farmland Preservation Program. The program is a partnership between the county and the National Farmland Preservation Program.



0 1 2 4 Miles

