

SAMPLE BALLOT

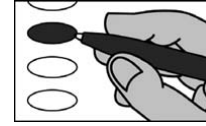
Sample Ballot  
Ashe County, North Carolina  
November 5, 2024

**B0001**



**BALLOT MARKING INSTRUCTIONS**

- A. With the marking device provided or a black ball point pen, completely fill in the oval to the left of each candidate or selection of your choice as shown.
- B. Where authorized, you may write in a candidate by filling in the oval and writing the name on the Write-in line.
- C. If you tear, deface or wrongly mark this ballot, return it to request a replacement.



SAMPLE BALLOT

PARTISAN ELECTIONS		NC Lieutenant Governor (You may vote for ONE)	NC Secretary of State (You may vote for ONE)
<b>President and Vice President of the United States</b> (You may vote for ONE)		<input type="radio"/> <b>Rachel Hunt</b> <i>Democratic Party</i> <input type="radio"/> <b>Wayne Jones</b> <i>Constitution Party</i> <input type="radio"/> <b>Hal Weatherman</b> <i>Republican Party</i> <input type="radio"/> <b>Shannon W. Bray</b> <i>Libertarian Party</i>	<input type="radio"/> <b>Elaine Marshall</b> <i>Democratic Party</i> <input type="radio"/> <b>Chad Brown</b> <i>Republican Party</i>
<input type="radio"/> <b>Kamala D. Harris</b> <b>Tim Walz</b> <i>Democratic Party</i>	<input type="radio"/> <b>Robert F. Kennedy, Jr.</b> <b>Nicole Shanahan</b> <i>We the People Party</i>	<b>NC Attorney General</b> (You may vote for ONE)	<b>NC Superintendent of Public Instruction</b> (You may vote for ONE)
<input type="radio"/> <b>Chase Oliver</b> <b>Mike ter Maat</b> <i>Libertarian Party</i>			<input type="radio"/> <b>Maurice (Mo) Green</b> <i>Democratic Party</i> <input type="radio"/> <b>Michele Morrow</b> <i>Republican Party</i>
<input type="radio"/> <b>Jill Stein</b> <b>Rudolph Ware</b> <i>Green Party</i>	<input type="radio"/> <b>Randall Terry</b> <b>Stephen E. Broden</b> <i>Constitution Party</i>	<input type="radio"/> <b>Jeff Jackson</b> <i>Democratic Party</i> <input type="radio"/> <b>Dan Bishop</b> <i>Republican Party</i>	<b>NC Treasurer</b> (You may vote for ONE)
<input type="radio"/> <b>Donald J. Trump</b> <b>JD Vance</b> <i>Republican Party</i>		<b>NC Auditor</b> (You may vote for ONE)	<input type="radio"/> <b>Wesley Harris</b> <i>Democratic Party</i> <input type="radio"/> <b>Brad Briner</b> <i>Republican Party</i>
<input type="radio"/> <b>Cornel West</b> <b>Melina Abdullah</b> <i>Justice for All Party</i>	<input type="radio"/> _____ Write-in	<input type="radio"/> <b>Bob Drach</b> <i>Libertarian Party</i> <input type="radio"/> <b>Jessica Holmes</b> <i>Democratic Party</i> <input type="radio"/> <b>Dave Boliek</b> <i>Republican Party</i>	<b>NC Supreme Court Associate Justice Seat 6</b> (You may vote for ONE)
<input type="radio"/> _____ Write-in		<b>NC Commissioner of Agriculture</b> (You may vote for ONE)	<input type="radio"/> <b>Jefferson G. Griffin</b> <i>Republican Party</i> <input type="radio"/> <b>Allison Riggs</b> <i>Democratic Party</i>
<b>US House of Representatives District 5</b> (You may vote for ONE)	<input type="radio"/> <b>Sean Haugh</b> <i>Libertarian Party</i> <input type="radio"/> <b>Sarah Taber</b> <i>Democratic Party</i> <input type="radio"/> <b>Steve Troxler</b> <i>Republican Party</i>	<b>NC Commissioner of Insurance</b> (You may vote for ONE)	<b>NC Court of Appeals Judge Seat 12</b> (You may vote for ONE)
<input type="radio"/> <b>Virginia Foxx</b> <i>Republican Party</i> <input type="radio"/> <b>Chuck Hubbard</b> <i>Democratic Party</i>	<input type="radio"/> <b>Natasha Marcus</b> <i>Democratic Party</i> <input type="radio"/> <b>Mike Causey</b> <i>Republican Party</i>	<b>NC Court of Appeals Judge Seat 14</b> (You may vote for ONE)	<input type="radio"/> <b>Tom Murry</b> <i>Republican Party</i> <input type="radio"/> <b>Carolyn Jennings Thompson</b> <i>Democratic Party</i>
<b>NC Governor</b> (You may vote for ONE)			<input type="radio"/> <b>Ed Eldred</b> <i>Democratic Party</i> <input type="radio"/> <b>Valerie Zachary</b> <i>Republican Party</i>
<input type="radio"/> <b>Mark Robinson</b> <i>Republican Party</i> <input type="radio"/> <b>Mike Ross</b> <i>Libertarian Party</i> <input type="radio"/> <b>Vinny Smith</b> <i>Constitution Party</i> <input type="radio"/> <b>Josh Stein</b> <i>Democratic Party</i> <input type="radio"/> <b>Wayne Turner</b> <i>Green Party</i>	<b>NC Commissioner of Labor</b> (You may vote for ONE)	<input type="radio"/> <b>Ed Eldred</b> <i>Democratic Party</i> <input type="radio"/> <b>Valerie Zachary</b> <i>Republican Party</i>	Continue voting next side →
<input type="radio"/> <b>Luke Farley</b> <i>Republican Party</i> <input type="radio"/> <b>Braxton Winston II</b> <i>Democratic Party</i>	Continue voting next side →		

SAMPLE BALLOT

SAMPLE BALLOT

SAMPLE BALLOT

SAMPLE BALLOT

SAMPLE BALLOT

SAMPLE BALLOT

SAMPLE BALLOT

SAMPLE BALLOT

SAMPLE BALLOT  
 SAMPLE BALLOT  
 SAMPLE BALLOT  
 SAMPLE BALLOT  
 SAMPLE BALLOT  
 SAMPLE BALLOT  
 SAMPLE BALLOT  
 SAMPLE BALLOT  
 SAMPLE BALLOT  
 SAMPLE BALLOT  
 SAMPLE BALLOT  
 SAMPLE BALLOT  
 SAMPLE BALLOT

Ashe County, North Carolina	November 5, 2024	Ballot Style B0001
<b>NC Court of Appeals Judge Seat 15</b> (You may vote for ONE)	<b>NONPARTISAN ELECTIONS</b>	
<input type="radio"/> <b>Chris Freeman</b> <i>Republican Party</i> <input type="radio"/> <b>Martin E. Moore</b> <i>Democratic Party</i>	<b>Ashe County Soil and Water Conservation District Supervisor</b> (You may vote for ONE)	
<b>NC State Senate District 47</b> (You may vote for ONE)	<input type="radio"/> <b>Bill Fairchild</b> <input type="radio"/>	
<input type="radio"/> <b>Ralph Hise</b> <i>Republican Party</i> <input type="radio"/> <b>Frank Patton Hughes III</b> <i>Democratic Party</i>	----- Write-in	
<b>NC House of Representatives District 93</b> (You may vote for ONE)	<b>REFERENDUM</b>	
<input type="radio"/> <b>Ben Massey</b> <i>Democratic Party</i> <input type="radio"/> <b>Ray Pickett</b> <i>Republican Party</i>	<b>Constitutional Amendment</b>	
<b>NC District Court Judge District 34 Seat 4</b> (You may vote for ONE)	Constitutional amendment to provide that only a citizen of the United States who is 18 years of age and otherwise possessing the qualifications for voting shall be entitled to vote at any election in this State.	
<input type="radio"/> <b>Donna L. Shumate</b> <i>Republican Party</i>	<input type="radio"/> <b>For</b> <input type="radio"/> <b>Against</b>	
<b>NC District Court Judge District 34 Seat 5</b> (You may vote for ONE)	<b>End of Ballot</b>	
<input type="radio"/> <b>Adam E. Anderson</b> <i>Republican Party</i>		
<b>Ashe County Board of Commissioners</b> (You may vote for THREE)		
<input type="radio"/> <b>Wes Greene</b> <i>Republican Party</i> <input type="radio"/> <b>Russell M. Killen</b> <i>Republican Party</i> <input type="radio"/> <b>Jerry D. Powers</b> <i>Republican Party</i> <input type="radio"/> <b>Tanya Robinson</b> <i>Democratic Party</i> <input type="radio"/> <b>Ann Rose</b> <i>Democratic Party</i> <input type="radio"/> <b>Nancy Beth Weaver-Hoffman</b> <i>Democratic Party</i>		
<b>Ashe County Board of Education</b> (You may vote for TWO)		
<input type="radio"/> <b>James McNeill</b> <i>Democratic Party</i> <input type="radio"/> <b>Josh Roten</b> <i>Republican Party</i> <input type="radio"/> <b>Kim Simmons</b> <i>Unaffiliated</i> <input type="radio"/> <b>Teresa Calhoun</b> <i>Republican Party</i>		

SAMPLE BALLOT  
 SAMPLE BALLOT  
 SAMPLE BALLOT  
 SAMPLE BALLOT  
 SAMPLE BALLOT  
 SAMPLE BALLOT  
 SAMPLE BALLOT  
 SAMPLE BALLOT  
 SAMPLE BALLOT  
 SAMPLE BALLOT  
 SAMPLE BALLOT  
 SAMPLE BALLOT