

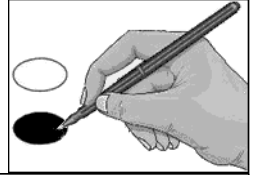
Sample Ballot - Republican Party Primary
Ashe County, North Carolina
May 17, 2022

R0002



BALLOT MARKING INSTRUCTIONS

A. With the marking device provided or a black ball point pen, completely fill in the oval to the left of each candidate or selection of your choice as shown.
B. If you tear, deface or wrongly mark this ballot, return it to request a replacement.



FEDERAL OFFICES	NC Court of Appeals Judge Seat 9 (You may vote for ONE)	Sheriff (You may vote for ONE)
US Senate (You may vote for ONE)	<input type="radio"/> Beth Freshwater Smith <input type="radio"/> Donna Stroud	<input type="radio"/> B. Phil Howell <input type="radio"/> Luke Staley
<input type="radio"/> Marjorie K. Eastman <input type="radio"/> David Flaherty <input type="radio"/> Benjamin E. Griffiths <input type="radio"/> Kenneth Harper, Jr. <input type="radio"/> Pat McCrory <input type="radio"/> Charles Kenneth Moss <input type="radio"/> Lichia Sibhatu <input type="radio"/> Debora Tshiovo <input type="radio"/> Mark Walker <input type="radio"/> Jen Banwart <input type="radio"/> Ms. Lee A. Brian <input type="radio"/> Leonard L. Bryant <input type="radio"/> Ted Budd <input type="radio"/> Drew Bulecza	NC Court of Appeals Judge Seat 11 (You may vote for ONE)	End of Ballot
	<input type="radio"/> Michael J. Stading <input type="radio"/> Charlton L. Allen	
	NC State Senate District 47 (You may vote for ONE)	
	<input type="radio"/> Ralph Hise <input type="radio"/> Deanna Ballard	
	DISTRICT OFFICES	
	NC District Court Judge District 23 - Seat 3 (You may vote for ONE)	
US House of Representatives District 5 (You may vote for ONE)	<input type="radio"/> Jonathan Jordan <input type="radio"/> Laura Byrd Luffman	
<input type="radio"/> Virginia Foxx <input type="radio"/> Michael Ackerman	COUNTY OFFICES	
STATE OFFICES	Board of Commissioners (You may vote for THREE)	
NC Supreme Court Associate Justice - Seat 5 (You may vote for ONE)	<input type="radio"/> Mike Eldreth <input type="radio"/> Wes Greene <input type="radio"/> Mark Anthony Massey <input type="radio"/> Todd A. McNeill <input type="radio"/> Chuck Olive <input type="radio"/> Paula Roark Perry <input type="radio"/> Terry D. Wagoner	
<input type="radio"/> Victoria E. Prince <input type="radio"/> April C. Wood <input type="radio"/> Trey Allen		
	North Carolina	Ballot Style R0002