



HIDDEN LAKE

Youngsville Township
Franklin County, North Carolina

Homesite # 9



+/- 4.6 acres
(+/- 200,376 s.f.)

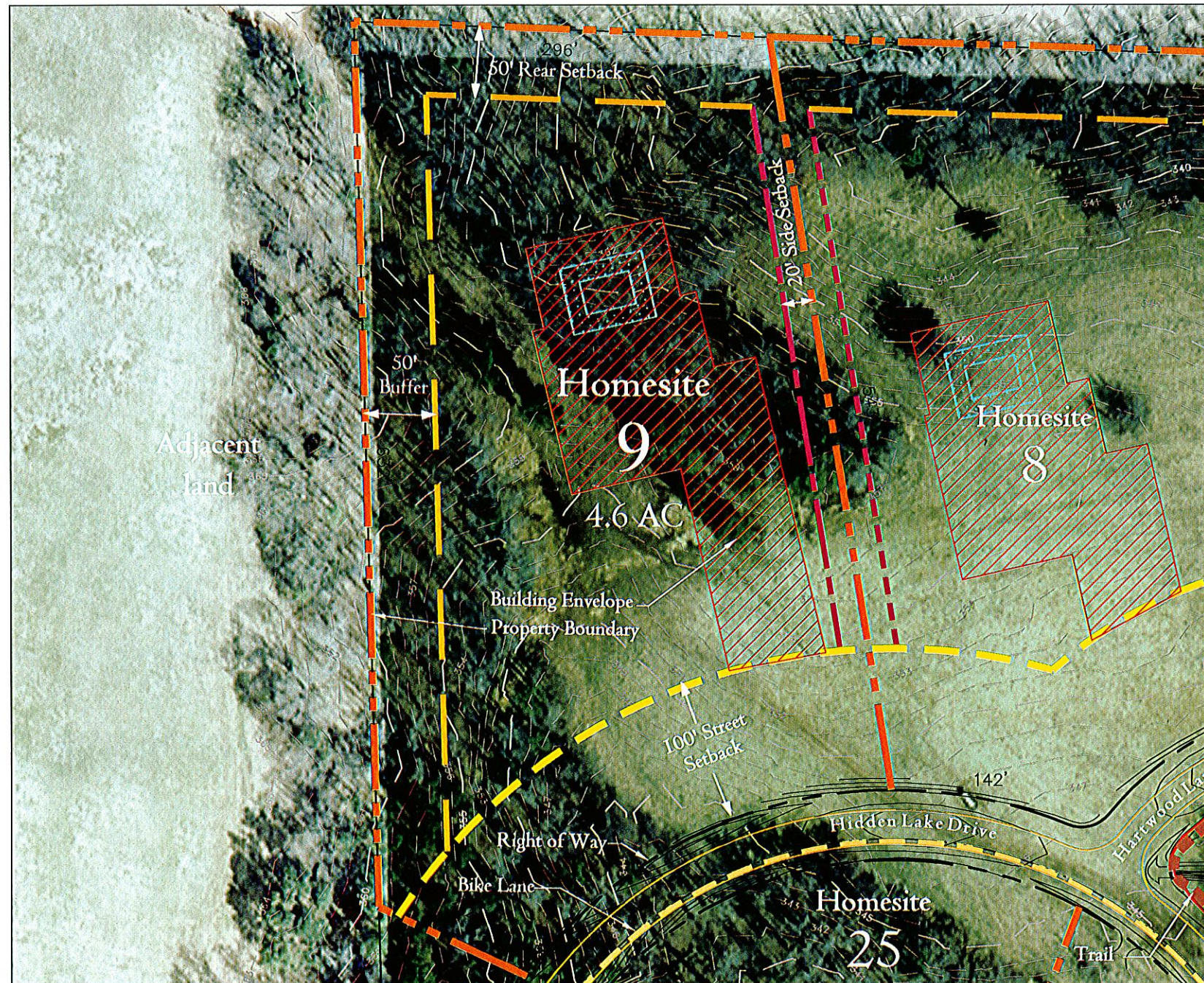
Site Improvement Criteria

Maximum Impervious Surface
16 Percent = +/- 32,060 Square Feet

Building Area
+/- 32,688 Square Feet

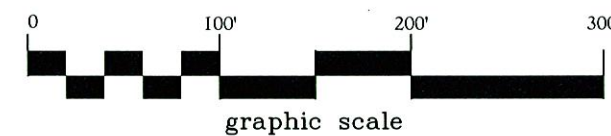
May 2, 2006



-  Property Line
-  100' Front Setback
-  20' Side Setback
-  50' Rear Setback
-  Trail
-  Bike Lane
-  Right of Way

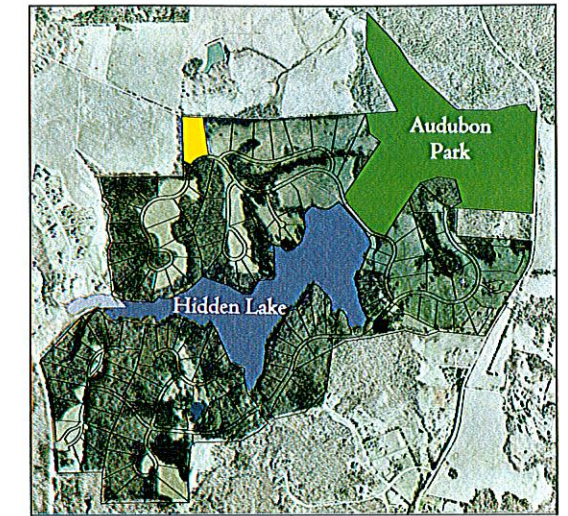


* Not for construction, sales, recordation, or conveyances.
 * All information is subject to change.

CRESCENT COMMUNITIES



 Appropriate for Pool
 Building Envelope



Homesite Information

- * No permanent stormwater treatment facilities are required, if:
 - a) Total impervious area is less than or equal to 16% (+/- 32,060 s.f.)
 - b) Total Denuded area is less than or equal to 28% (+/- 56,105 s.f.)
 - c) Sq. footage subject to change based on final recorded plat.
- * Field topography shown.
- * 10' contours represented by darker dashed line.
- * C.O.S. - Common Open Space
- * Lot lines and setbacks subject to change.
- * Refer to the Hidden Lake Design Guidelines for additional information.
- * 100' Conservation Setback - No clearing, excavation or dredging may occur; no boat ramps may be constructed. Private piers are permitted in accordance with the Design Guidelines.
- * All Homesites will contain a septic tank and pump connected by a force main to the sanitary main at the street. The tank and associated monitoring devices shall be located within the Building Envelope and as described in the 'Installation Specifications: Wastewater Disposal' and the 'Hidden Lake Design Guidelines'. All information on the FCHD (Franklin County Health Department) Improvement Permit will supersede this site illustration.
- * Information in this document may be updated as it becomes available.