



Wake County Parks, Recreation and Open Space (PROS)

Alta Planning + Design | Stewart



# WAKE COUNTY GREENWAY PLAN

PROJECT OVERVIEW | *March 2016*





Wake County's vision is to be a great place to live, work, learn and play!



# Project Purpose

To provide a clear guideline and plan for the development of a countywide network of greenway trails, furthering the benefits of greenways for all of Wake County.





# Greenways Defined

- Capital Area Greenway Planning & Design Guide
- Greenways vs. Greenway Trails vs. On-Road Facilities

*Clockwise from top left: Little Rock Trail (Raleigh), Abbotts Creek Trail (Raleigh), Rocky Branch Greenway (Raleigh), and the White Oak Greenway (Cary).*







## IMPROVE ACCESS TO OUTDOOR RECREATION FOR HEALTH AND WELLNESS

Improve health and wellness of residents by increasing access to trails, thereby offering more opportunities for recreation, physical activity and time spent outdoors and in nature.



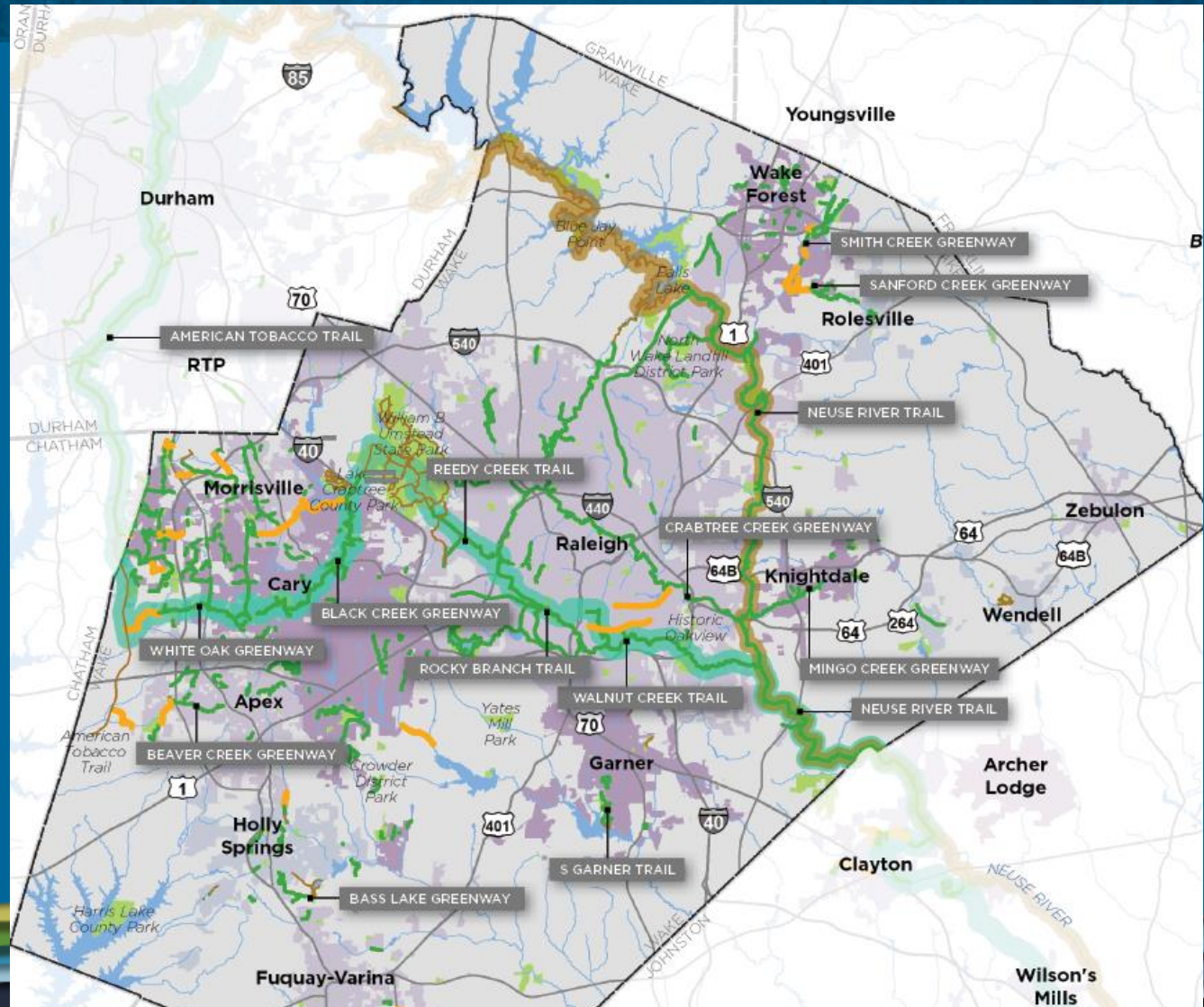
*Historic Yates Mill County Park, photo by Gary D. Knight.*





# INCREASE CONNECTIVITY FOR MULTI-MODAL TRANSPORTATION

Increase transportation options by expanding upon existing trails, connecting key destinations, such as downtowns, parks, schools, shopping centers, transit hubs, employment centers, and neighborhoods.







## SUPPORT ECONOMIC DEVELOPMENT AND CAPITALIZE ON TRAIL-BASED TOURISM

Support economic development by marketing, promoting, and maintaining greenways in a way that increases tourism, enhances property values, and makes Wake County the centerpiece of North Carolina's growing legacy as "The Great Trails State."



*Bicycles mean business in Raleigh. Left: Bicycle parking on Hargett St. Below: Bicyclists at Crank Arm Brewing; photos by ITRE Bicycle and Pedestrian Program.*







## PROTECT WATERWAYS, WILDLIFE HABITAT, AND NATURAL AREAS ALONG GREENWAYS

Protect our water supply by keeping the land around our waterways in their natural state, thereby filtering pollutants from storm water runoff, while also providing essential plant and wildlife habitat as the region continues to grow.





# Key Outcomes



- Identify current and future greenways
- Identify key connector segments (as opposed to all proposed trails)
- Align priority projects with future funding





**Data  
Collection &  
Base Maps**

Oct 2015

**Opportunities  
& Constraints**

Nov 2015

**Coordination  
Workshop**

Dec 2015

**Draft  
Greenway  
System Plan**

Jan-Mar 2016

**Final Plan  
& Executive  
Summary**

Mar-Apr 2016



# Trail Coordination Workshop

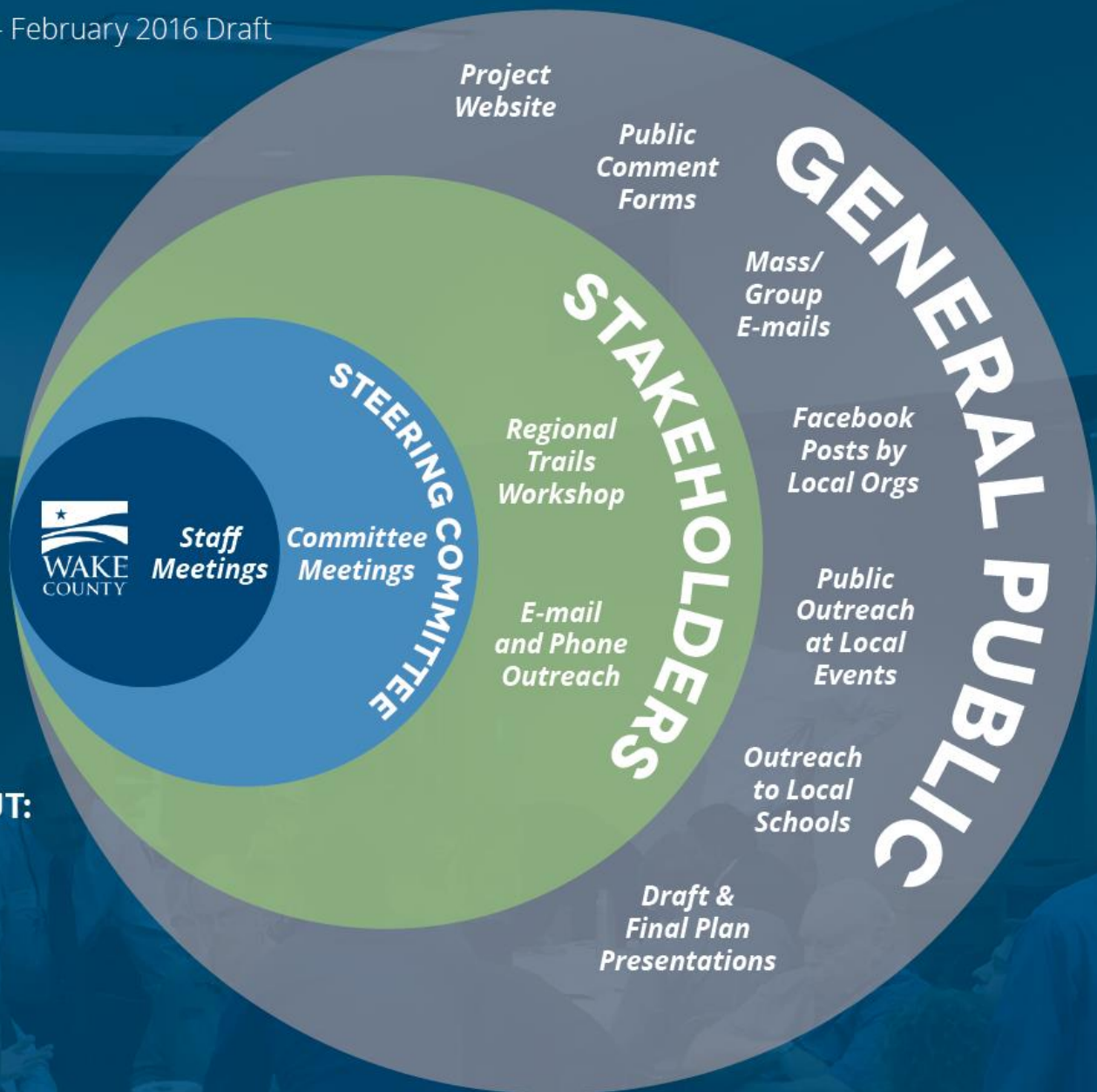
- 47 Project Stakeholders
- Parks & planning staff and directors, CAMPO, TJCOC, RTP, developers, Duke Energy, health advocates, tourism.
- Chuck Flink: Regional Trail Systems
- Iona Thomas: Great Trails State
- Challenges & opportunities for greenway development
- Filling gaps in the system is a priority





# Public Process Overview

KEY TYPES  
OF MEETINGS  
& PUBLIC INPUT:





16

STEERING COMMITTEE MEMBERS, WITH 3 OFFICIAL MEETINGS

47

STAKEHOLDERS AT THE REGIONAL TRAILS COORDINATION WORKSHOP

2

OUTREACH SESSIONS AT LOCAL EVENTS

27

PUBLIC HIGH SCHOOLS CONTACTED FOR PLAN OUTREACH

25

LOCAL ORGANIZATIONS CONTACTED THROUGH FACEBOOK

4

DRAFT AND FINAL PLAN PRESENTATIONS

2,300+

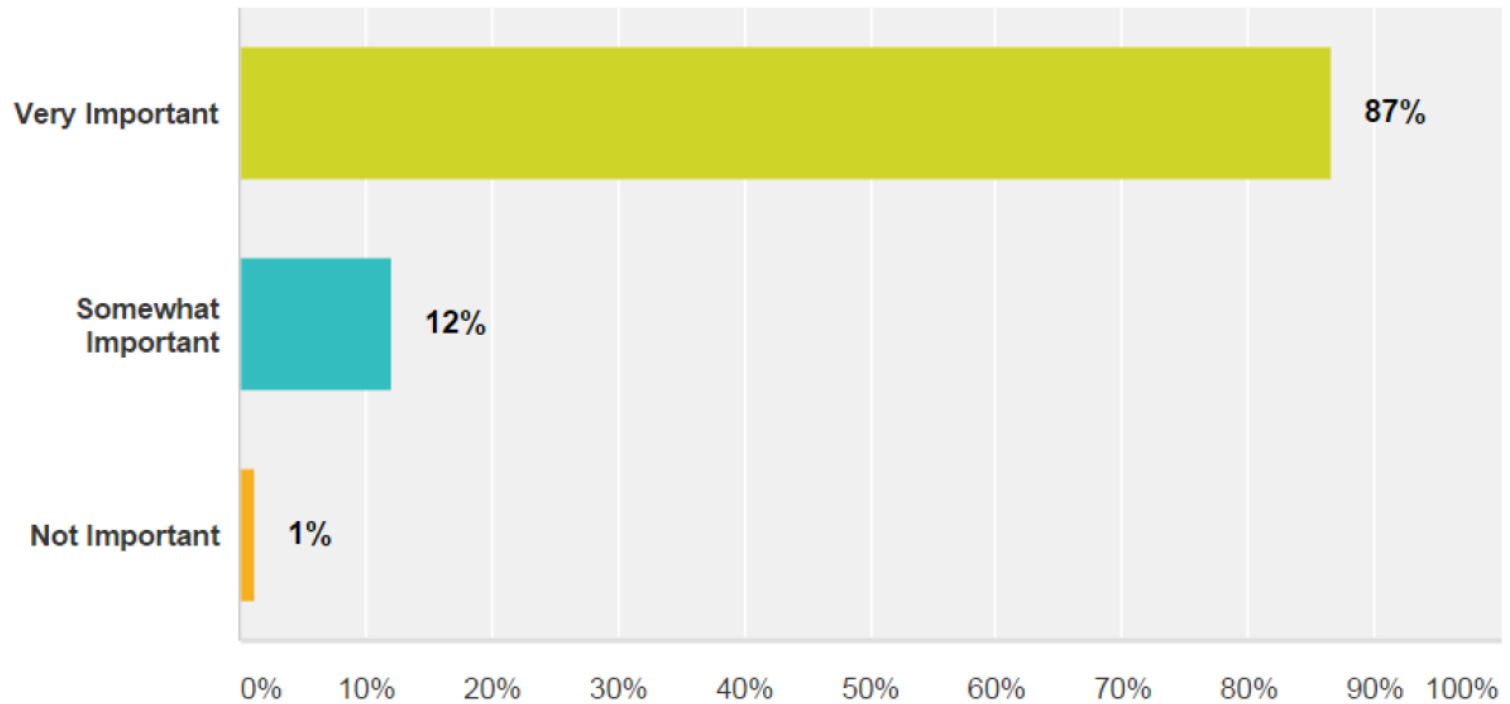
PUBLIC COMMENT FORMS

1,400+

UNIQUE VISITORS TO THE PROJECT WEBSITE

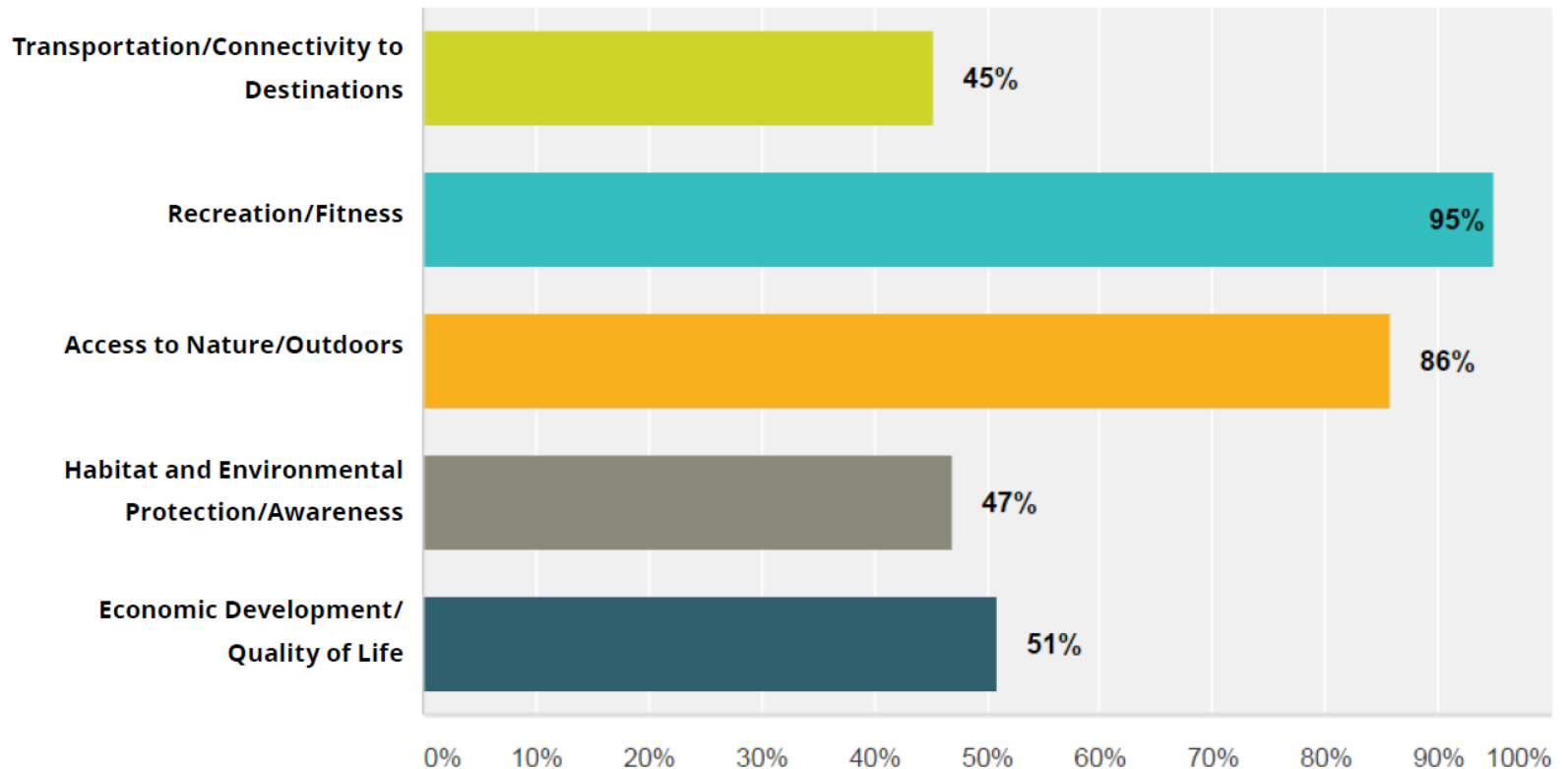


*How important to you is the goal of creating more greenways in Wake County?*



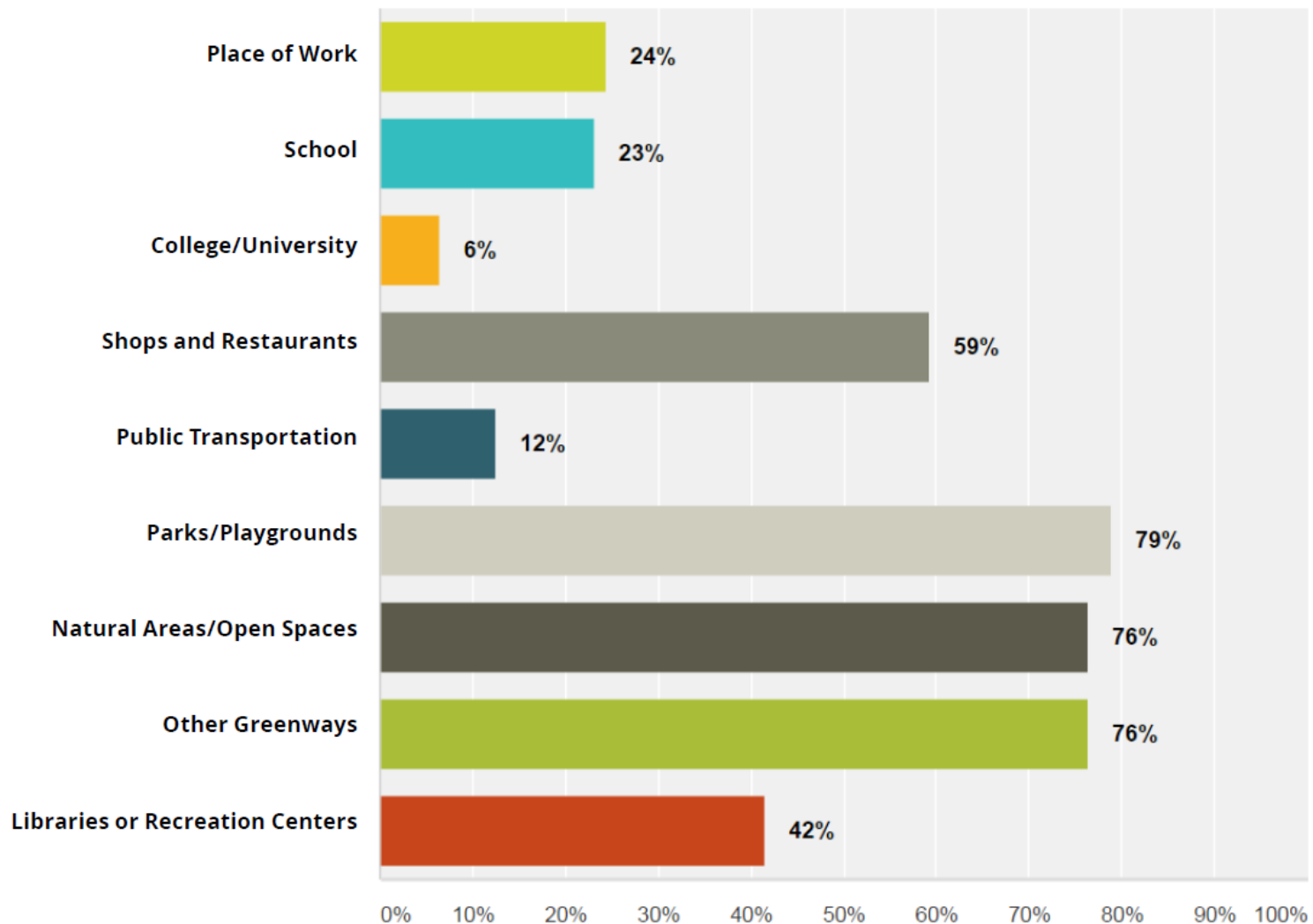


*In your opinion, what are the most important benefits and uses of a greenway system?  
Select all that apply.*



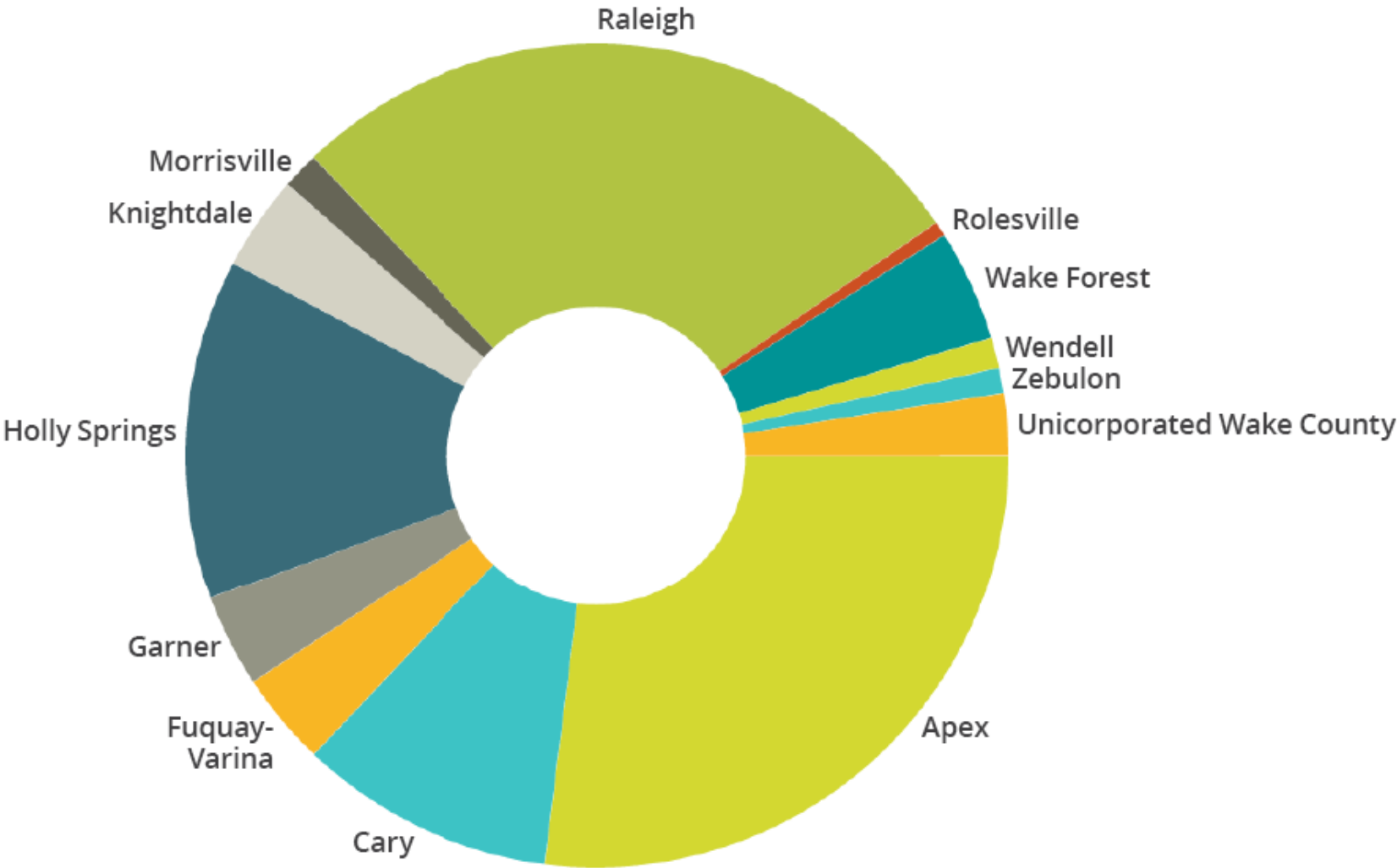


*What destinations would you most like to get to by greenway? Select all that apply.*

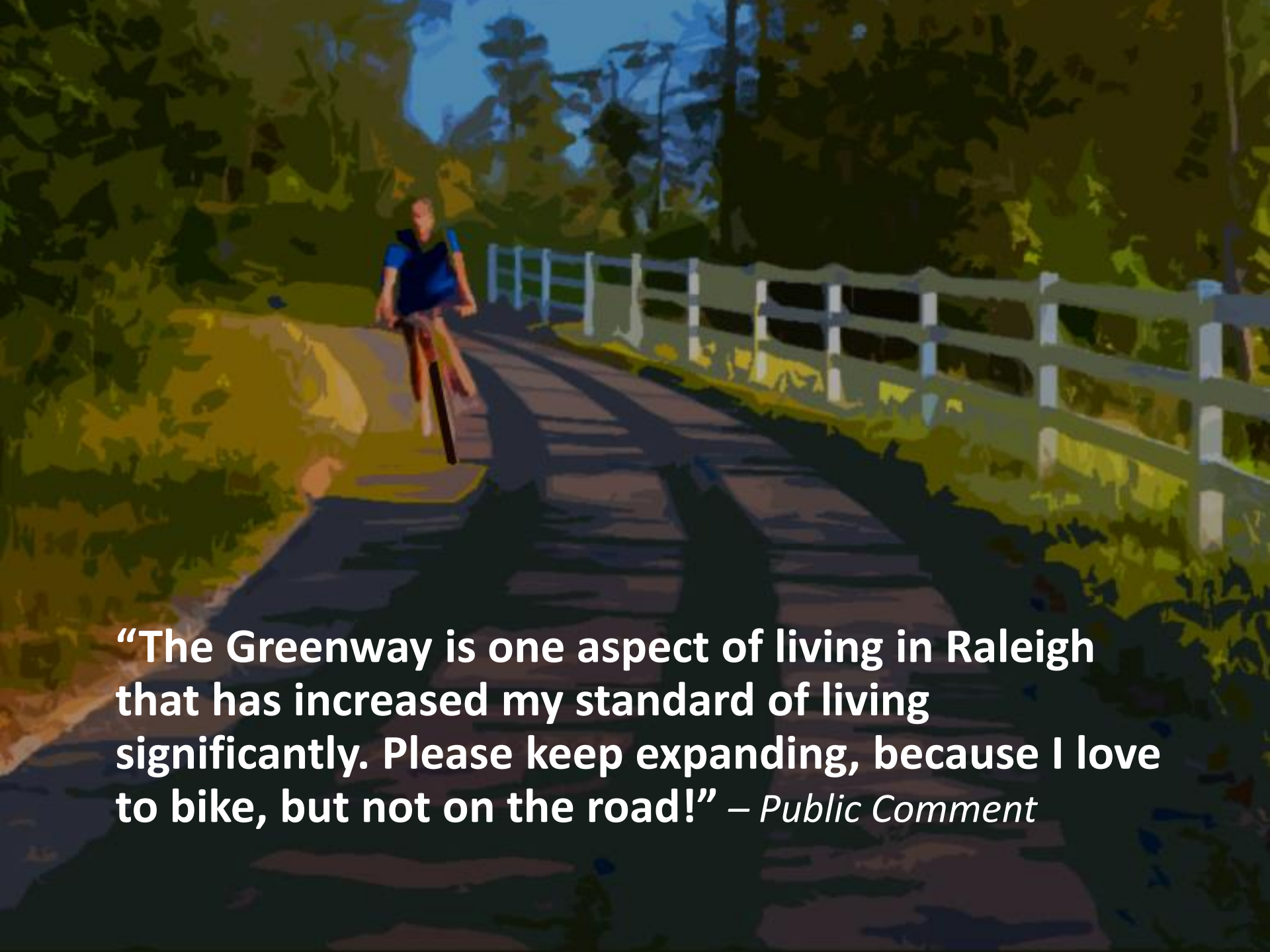




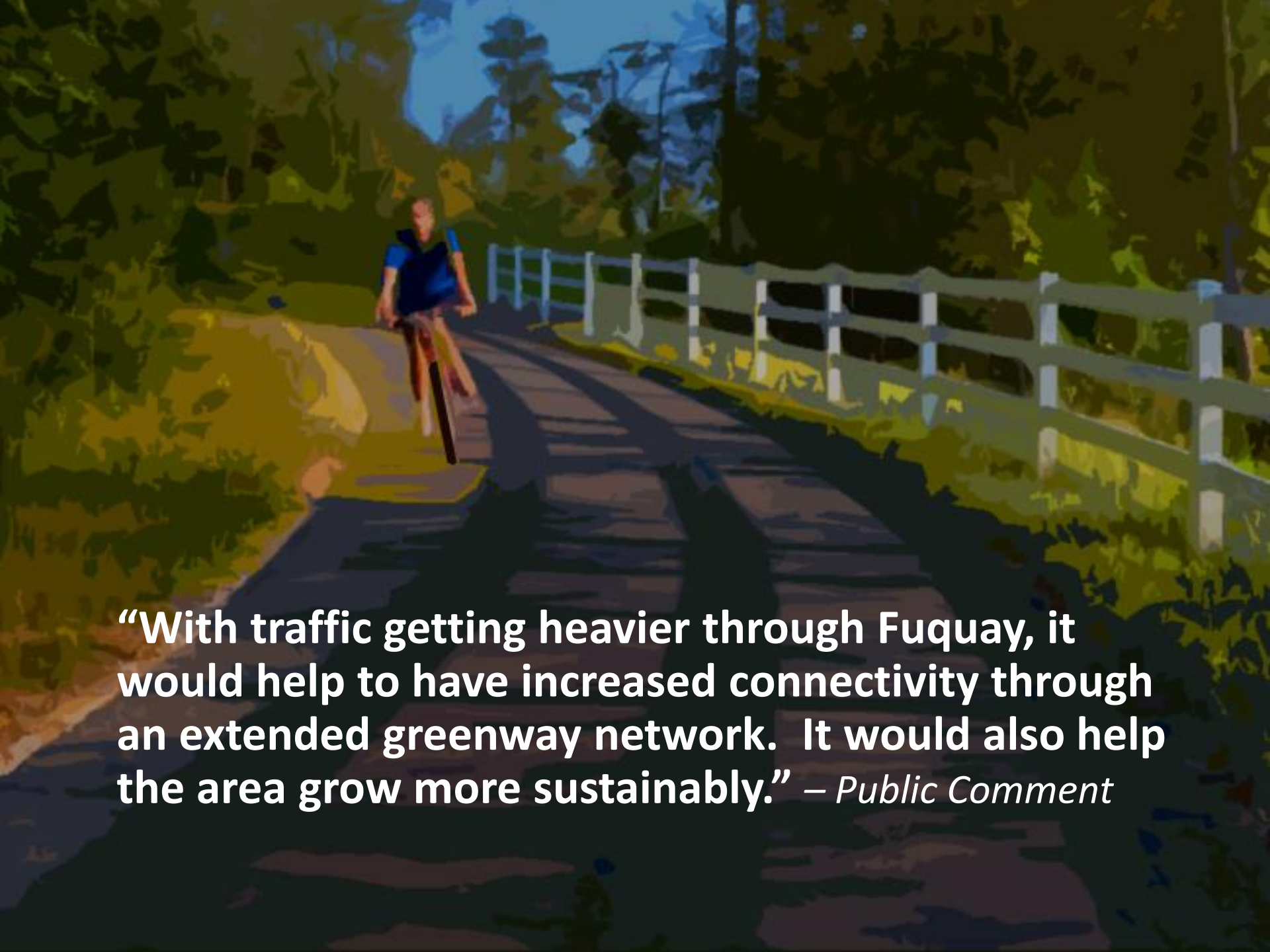
*Please share where you live, so we can better ensure broad participation in the comment form.*





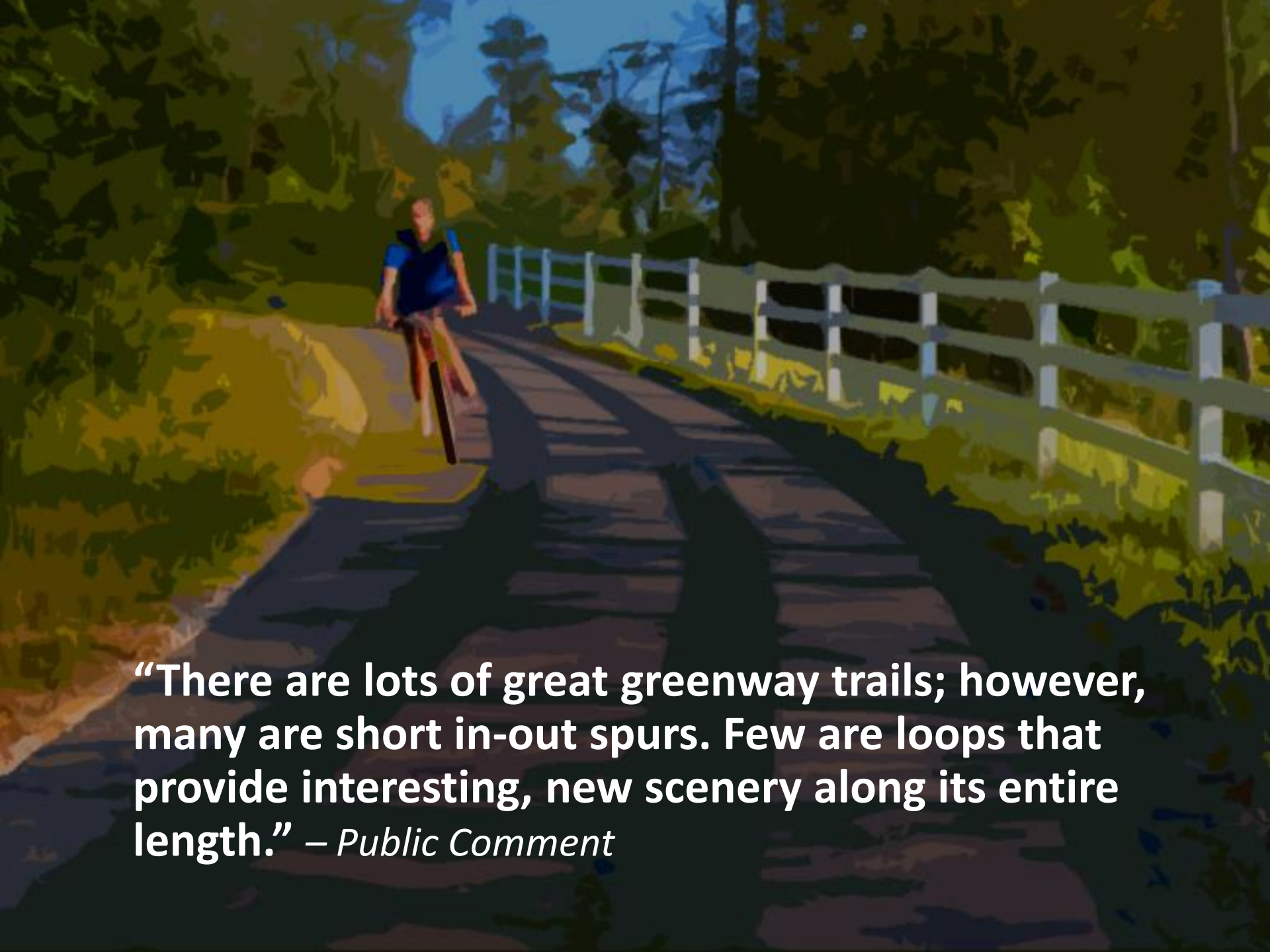


**“The Greenway is one aspect of living in Raleigh that has increased my standard of living significantly. Please keep expanding, because I love to bike, but not on the road!” – *Public Comment***

A photograph of a person riding a bicycle on a paved greenway path. The path is bordered by a white wooden fence on the right and dense green foliage on the left. The scene is brightly lit, suggesting a sunny day. The text is overlaid on the lower portion of the image.

**“With traffic getting heavier through Fuquay, it would help to have increased connectivity through an extended greenway network. It would also help the area grow more sustainably.” – *Public Comment***



A person wearing a blue shirt and dark shorts is riding a bicycle on a paved greenway trail. The trail is bordered by a white wooden fence on the right and dense green foliage on the left. The scene is brightly lit, suggesting a sunny day. The text is overlaid on the lower portion of the image.

**“There are lots of great greenway trails; however, many are short in-out spurs. Few are loops that provide interesting, new scenery along its entire length.” – *Public Comment***

A map of the Research Triangle area in North Carolina, showing cities like Morrisville, Cary, Raleigh, Knightdale, Apex, Garner, Zebulon, Wendell, Archer Lodge, Clayton, and Holly Springs. Major highways like I-40, I-77, and I-85 are visible. A semi-transparent white rectangle is centered over the map, containing the text "Draft Recommendations" in a large, bold, blue font. The map has a light beige background with green lines for water bodies and grey lines for roads. The text "Draft Recommendations" is the primary focus, overlaid on the map.

# Draft Recommendations



# Connecting the Dots

*“In the past decades, all 12 municipalities, led by the City of Raleigh, have realized and embraced the enormous social, economic and environmental benefits of greenways. With this Wake County led plan, the process of “connecting the dots” can result in a long standing goal of having a truly regional greenway system.”* - Robert Hinson, Chair of the Wake County Open Space and Parks Advisory Committee (OSAPAC)

## *Key Steps in Developing Recommendations for this Plan*

1

**COLLECT DATA:** Collect and assemble GIS data, existing community plans, and maps; gather Steering Committee input on primary existing challenges and opportunities; ask for public opinions on greenways through the comment form.

2

**MAP ALL EXISTING TRAILS AND TRAILS PROPOSED IN PREVIOUS PLANS:** Conduct outreach for all 12 of Wake County's municipalities, neighboring jurisdictions, and regional entities; research into existing plans and studies for proposed greenway routes on adopted plans.



# 3

## IDENTIFY A SYSTEM OF REGIONAL CONNECTOR TRAILS:

Examine proposed routes from existing local and regional plans and identify routes that offer the best potential for regional connectivity, based on connections to existing trails and the ability to connect to destinations such as parks, lakes, city and town centers; solicit input on the draft network from a large group of stakeholders at a countywide trail coordination workshop; follow up with individual community planners and park system managers to confirm regional routes in their own communities.

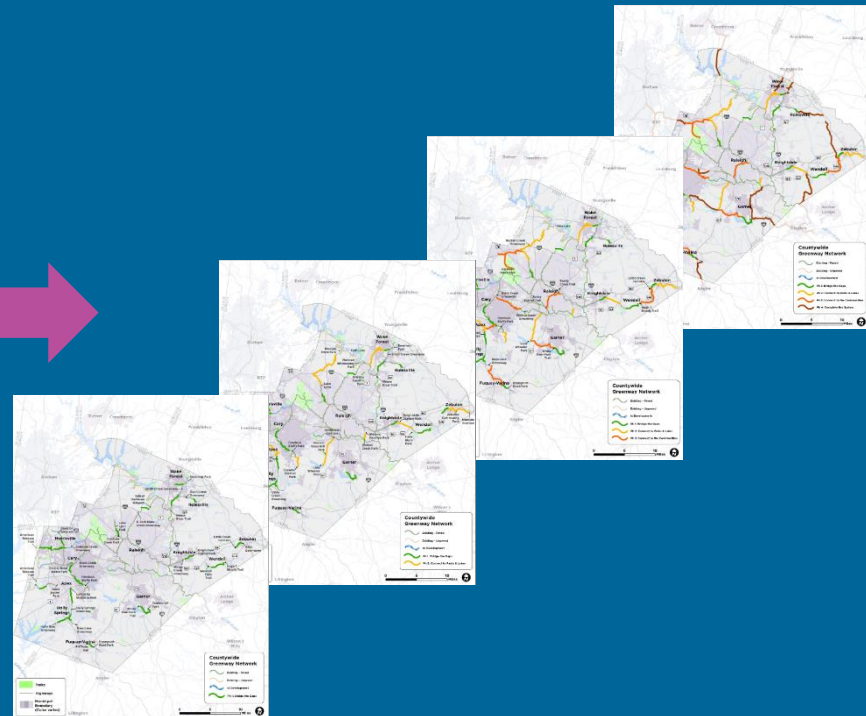
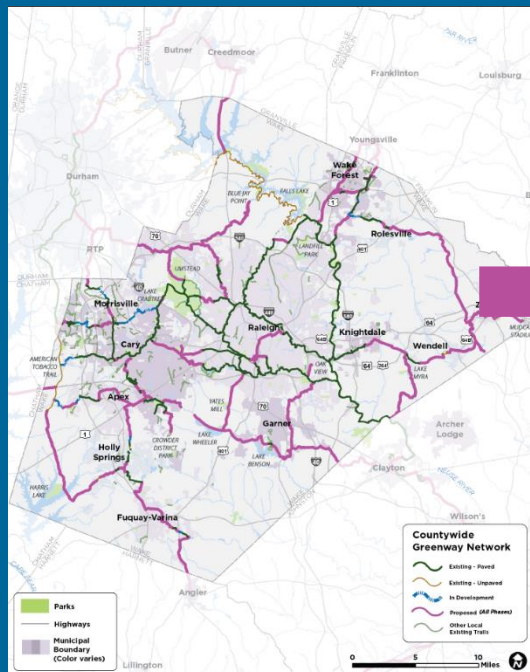


*The planning process incorporated input from nearly 50 local and regional stakeholders, and dozens of local and regional plans.*

# 4

## PRIORITIZE THE OVERALL SYSTEM INTO SETS OF RECOMMENDATIONS:

Divide proposed system into segments based on logical end-points such as existing trails, parks, and town centers; Assign segments into phases based on stakeholder and committee feedback (filling trail system gaps first) and the results of public feedback on the types of desired destinations (connecting to existing trails, parks, and natural areas).



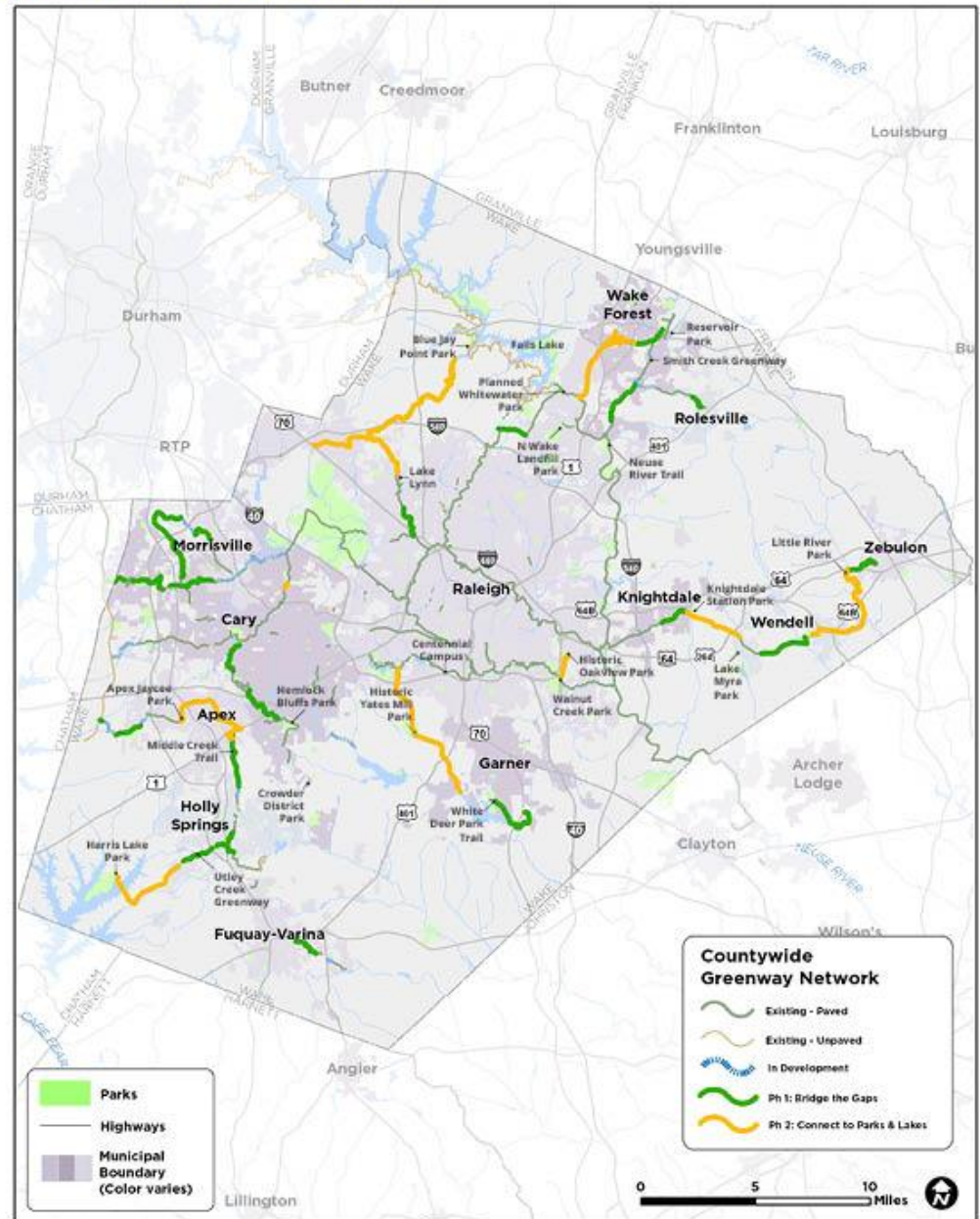






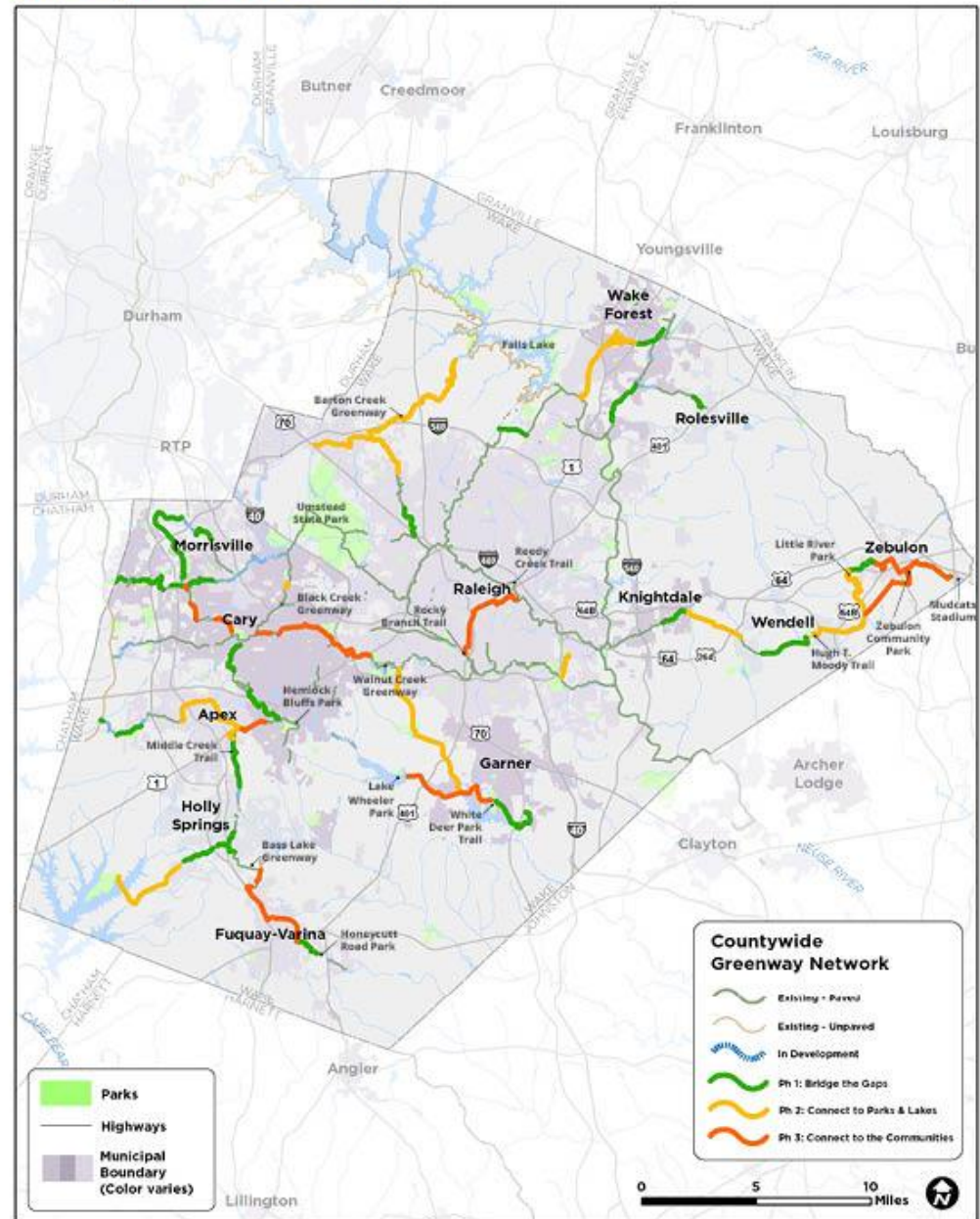


# Connect to Parks & Lakes



# Connect Communities

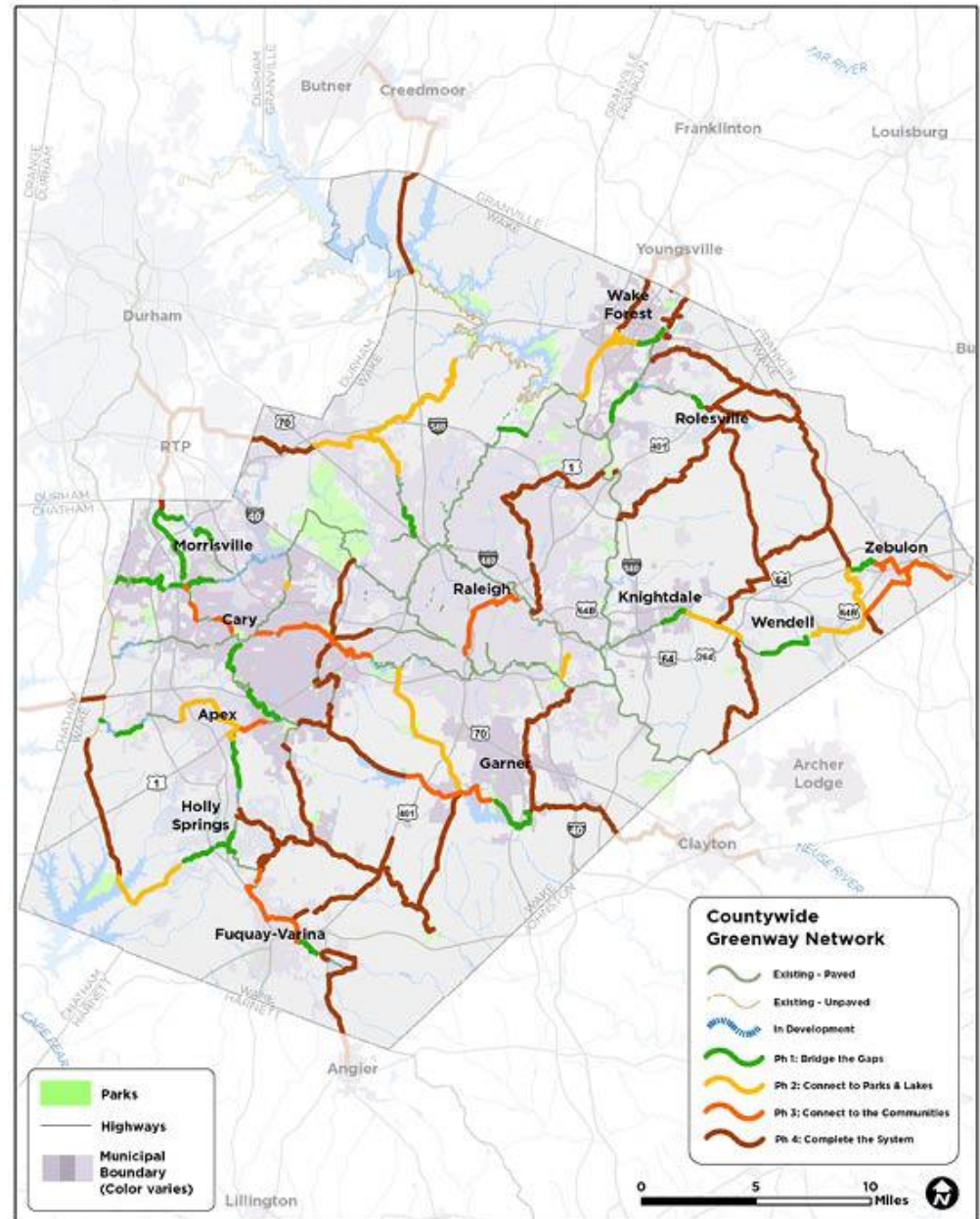
**MAP 3.3** CONNECT THE COMMUNITIES





# Complete the System

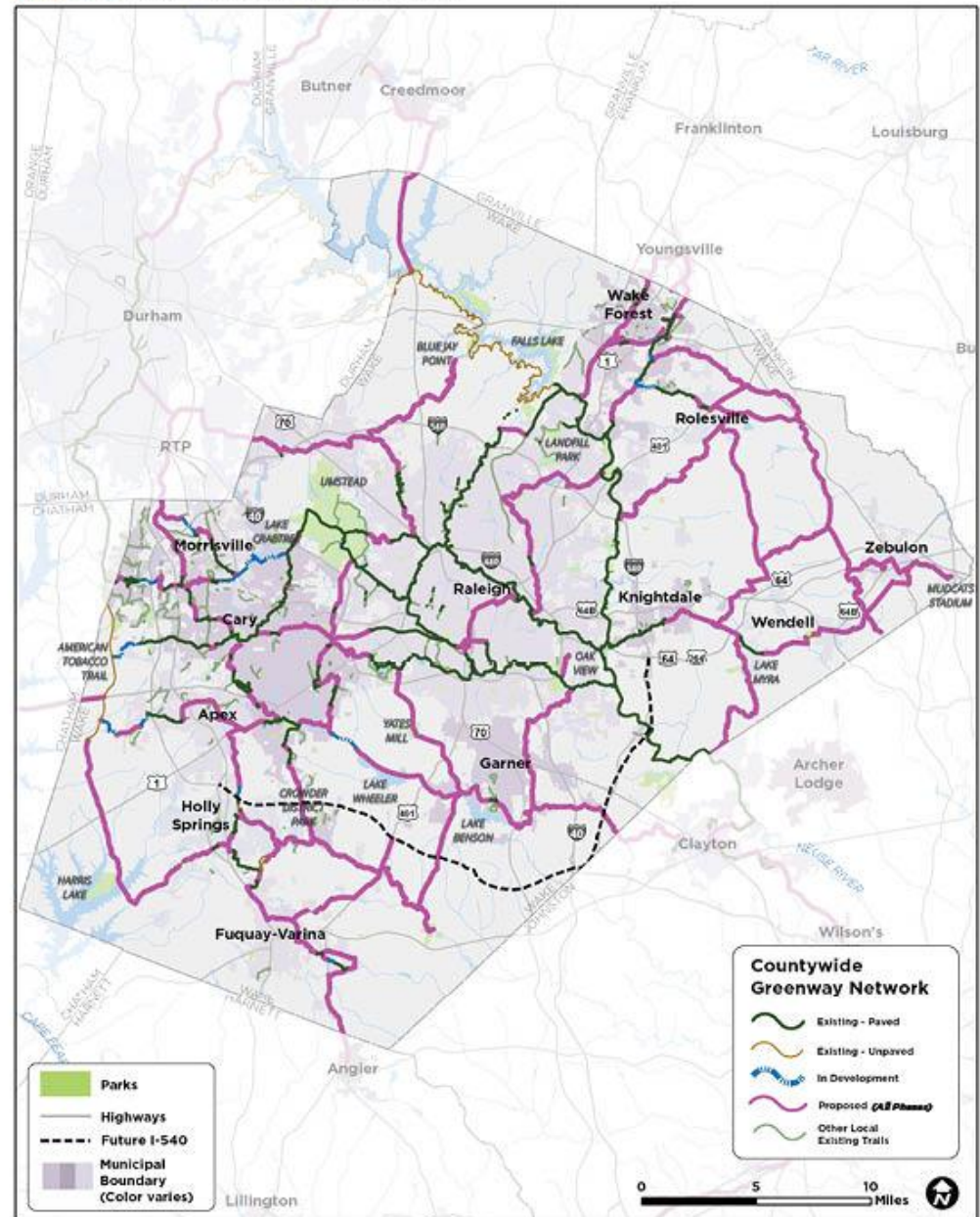
## MAP 3.4 COMPLETE THE SYSTEM



# A Complete System

- About **250** miles of proposed trails in this Plan
- About **25** miles of trail currently in development in Wake County
- About **35** miles of “Bridge the Gaps” priority projects
- Comprehensive wayfinding & trail amenities as longer-distance connections are made

MAP 3.0 COUNTYWIDE GREENWAY SYSTEM





*Quantifying  
the Benefits  
of the  
Countywide  
Greenway  
System (full  
findings to  
be included  
as an  
appendix)*

ANNUAL MILES BIKED

22,852,000

MILES WALKED  
PER YEAR

That's the  
equivalent of

8,000

CROSS-COUNTRY  
ROAD TRIPS



ANNUAL MILES WALKED

2,155,000

MILES BIKED  
PER YEAR

That's the  
equivalent of



85

TRIPS AROUND  
THE EARTH!

REDUCED HEALTHCARE COSTS

\$4,316,000

IN ANNUAL HEALTHCARE  
COST SAVINGS

That's the equivalent of 2,400  
trips to the doctor!



ANNUAL PHYSICAL ACTIVITY FROM BIKING & WALKING

9.5%



OF WAKE COUNTY RESIDENTS  
MEETING THE CDC RECOMMENDED  
HOURS OF PHYSICAL ACTIVITY JUST  
FROM BICYCLING (-30 minutes/day)

REDUCED VEHICLE EMISSIONS

\$667,000

SAVINGS FROM REDUCED  
VEHICLE EMISSIONS PER YEAR



*Quantifying  
the Benefits  
of the  
Countywide  
Greenway  
System (full  
findings to  
be included  
as an  
appendix)*

#### HOUSEHOLD VEHICLE OPERATION COSTS



**\$11,354,000**

IN REDUCED HOUSEHOLD  
VEHICLE OPERATION COSTS  
PER YEAR

#### CONGESTION COSTS

**\$1,593,000**

IN COST SAVINGS FROM REDUCED  
TRAFFIC CONGESTION



#### VEHICLE MILES TRAVELED



**19,919,000**

FEWER MILES TRAVELLED BY  
AUTOMOBILES EVERY YEAR

#### COLLISION COSTS

**\$7,171,000**

IN REDUCED MOTOR  
VEHICLE COLLISION-  
RELATED COSTS



#### MAINTENANCE COSTS



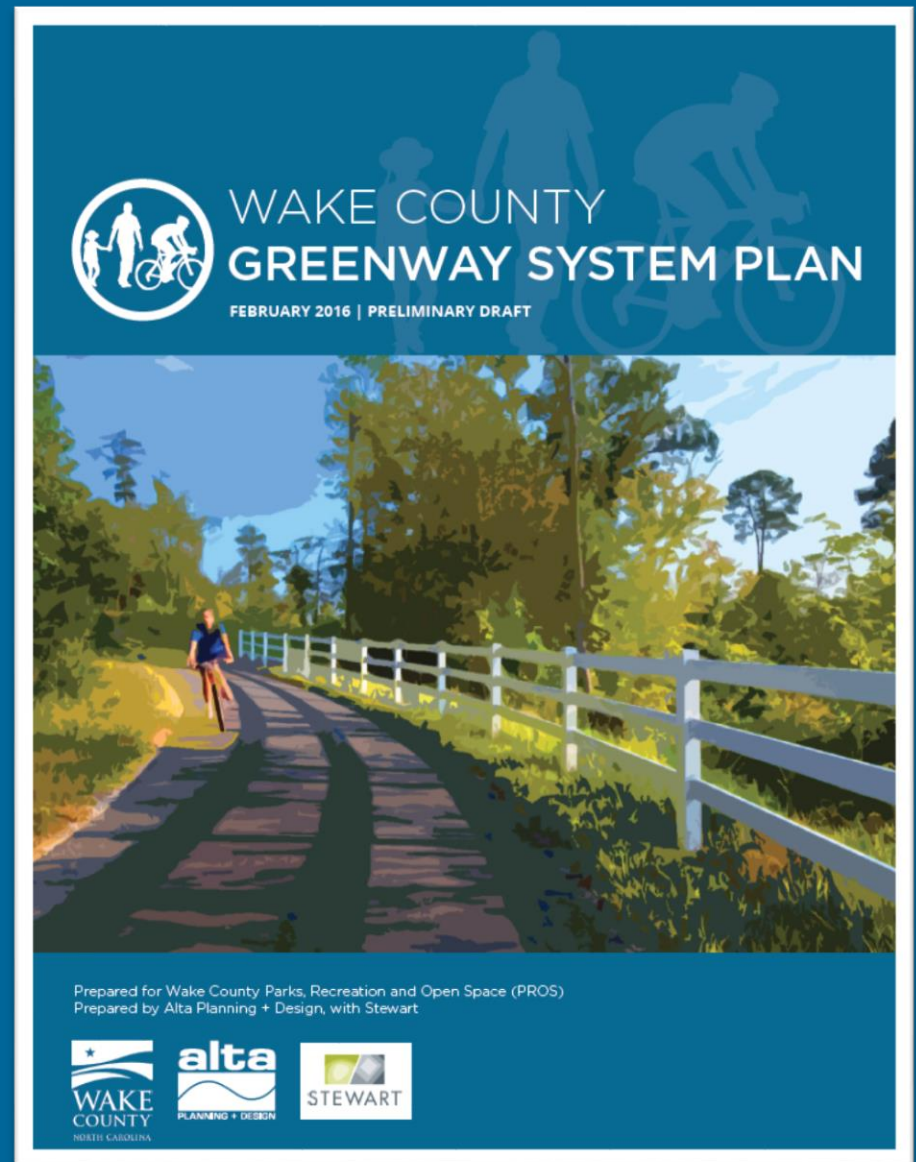
**\$2,988,000**

IN REDUCED ROAD  
MAINTENANCE COSTS



# Current Steps

- Conducting outreach to municipal partners regarding draft proposed network:
  - *Goal is to balance local priorities with the desire for regional connections*
- Project cut-sheets for the “Bridge the Gaps” projects



# Next Steps

- Committee to review full draft plan (late March)
- Draft plan online for public review (early April)
- Produce final plan based on input
- Final plan presentations



**[WakeGreenways.weebly.com](http://WakeGreenways.weebly.com)**



# Outreach Booth

- **TODAY, March 11:** 3pm-8pm
- **Saturday March 12:** 10am-6pm
- Tobacco Road Marathon Pre-Race Expo, Embassy Suites of Cary
- Look for Chris Snow & Eric Staehle at the Wake County Parks, Recreation, and Open Space booth!



[WakeGreenways.weebly.com](http://WakeGreenways.weebly.com)

A person is riding a bicycle on a paved path that curves through a lush, green wooded area. The path is bordered by a white wooden fence on the right side. The scene is captured in a high-contrast, almost painterly style with vibrant greens and blues. The lighting suggests a bright, sunny day, with shadows cast across the path.

**“We live in one of the most beautiful places on earth, and yet our past successes provide no assurances of future successes. If we don’t start planning now and protect our great quality of life in Wake County, it will slowly start slipping away.”**

*- Sig Hutchinson, Wake County Commissioner*