



East Coast Greenway

Triangle Region, NC



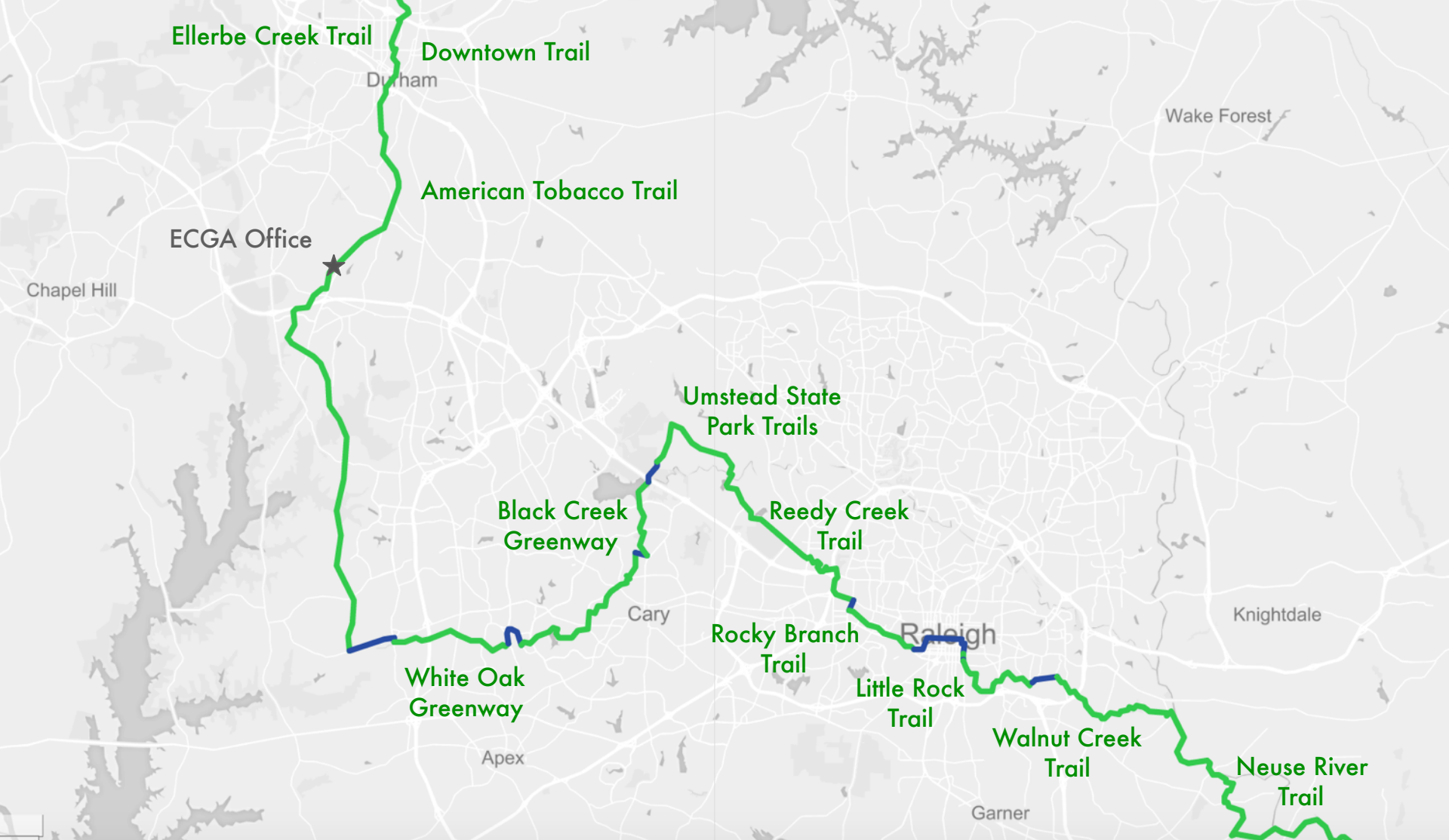


A linear park for everyone.

Connecting people and places,
Maine to Florida

At 3,000 miles, the East Coast Greenway
will be the longest connected biking and
walking route in the United States.





The Triangle Region is the *most connected* urban area
along the East Coast Greenway.



32%

17%

51%

East Coast Greenway

25%

6%

69%

North Carolina ECG

93%

5% 2%

Triangle Region ECG



Completed Trail



Trail in Development



Route Identified/Gap

East Coast Greenway Progress





Ellerbe Creek Trail (3 miles)





Downtown Trail (1.3 miles)





American Tobacco Trail (17.5 miles)

East Coast Greenway Alliance • *Connecting people and places, Maine to Florida* • greenway.org





White Oak Greenway (6 miles)





Black Creek Greenway (7 miles)





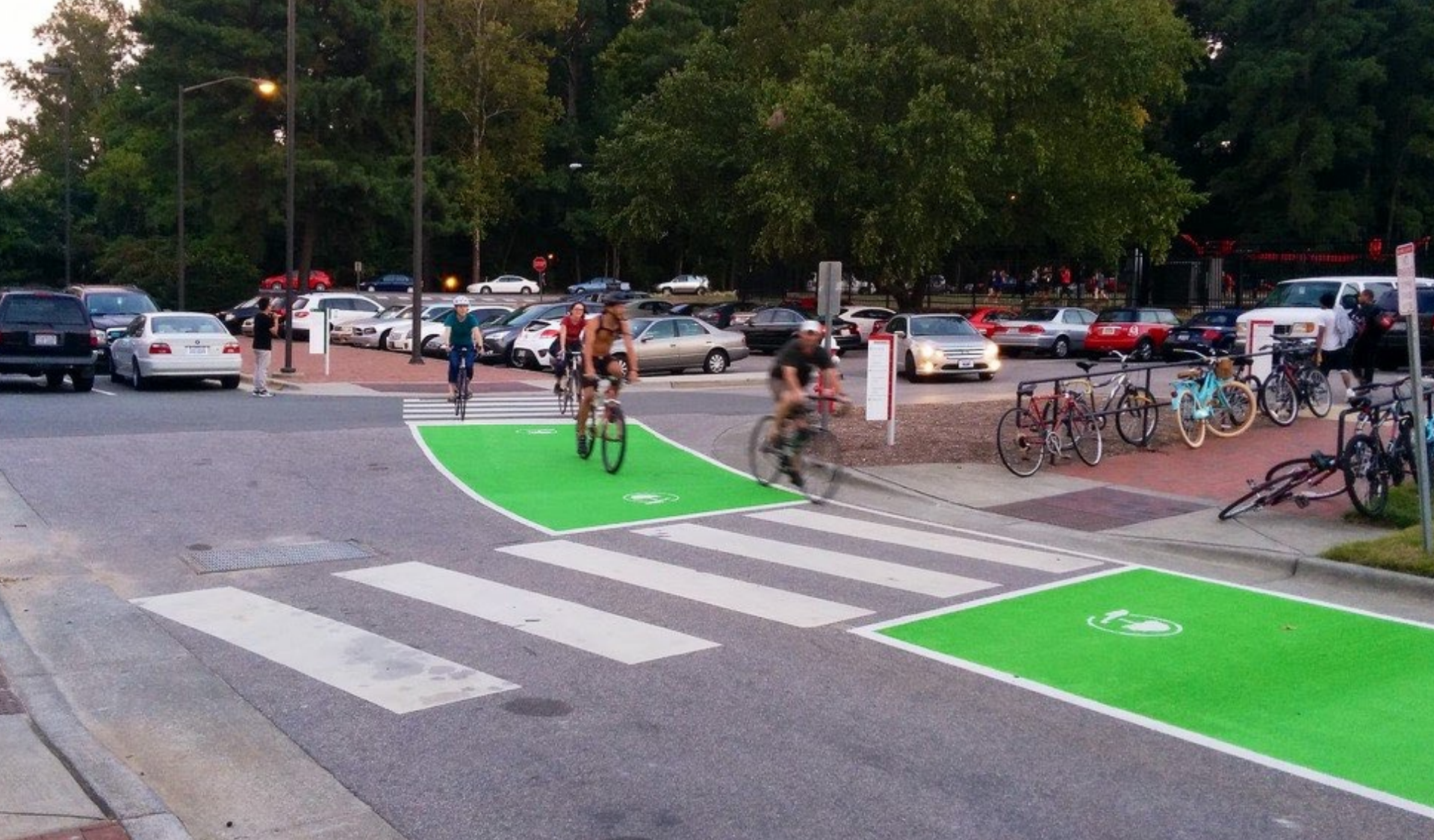
Umstead State Park Trails (5 miles)





Reedy Creek Trail (4.7 miles)





Rocky Branch Trail (2.2 miles)





Little Rock Trail (1 mile)





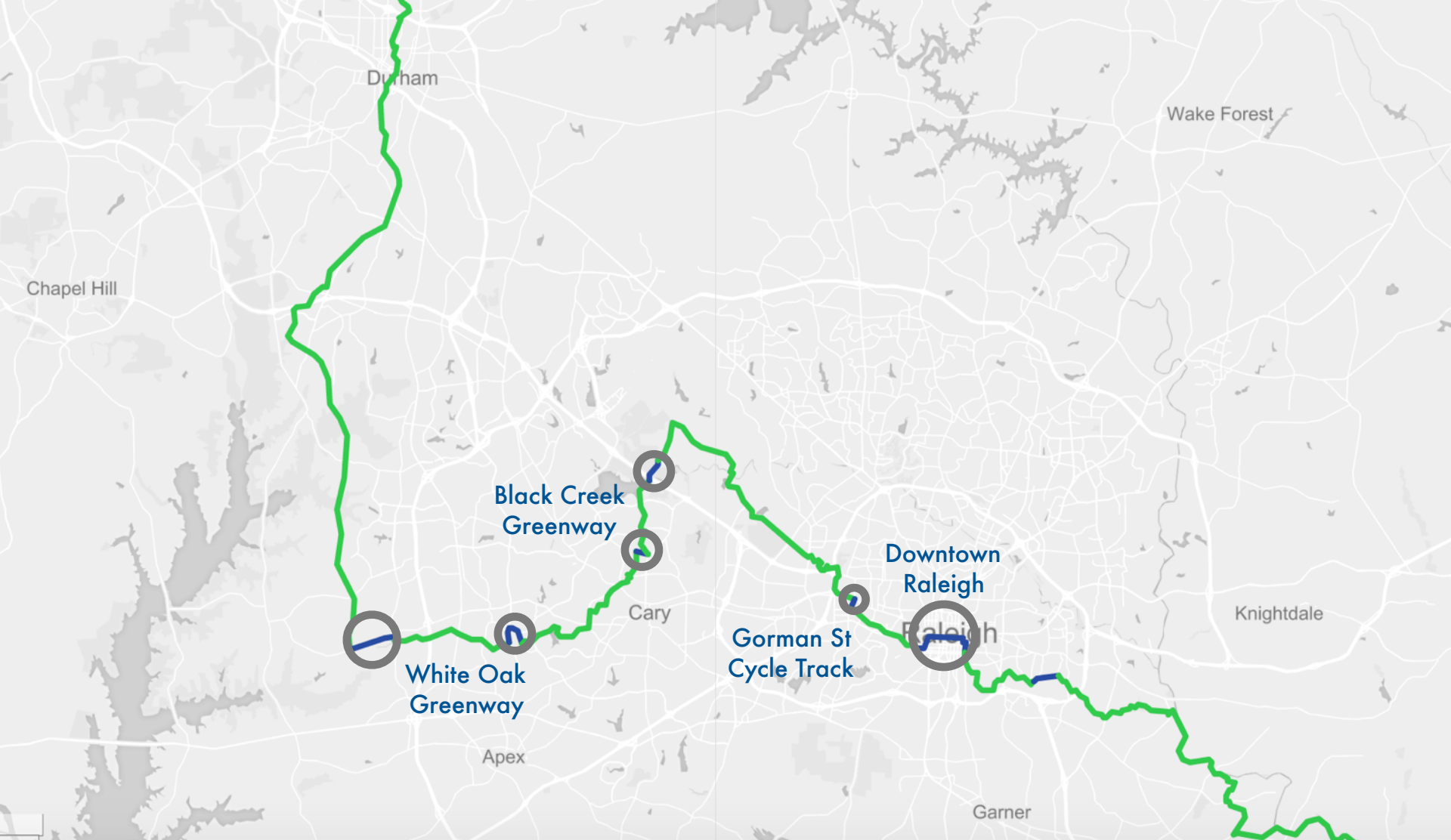
Walnut Creek Trail (7.2 miles)





Neuse River Trail (9 miles)





Closing the Gaps:
By 2018, the Triangle route will be **97% off-road.**





East Coast
Greenway®
ALLIANCE

Southeast Greenways & Trails Summit

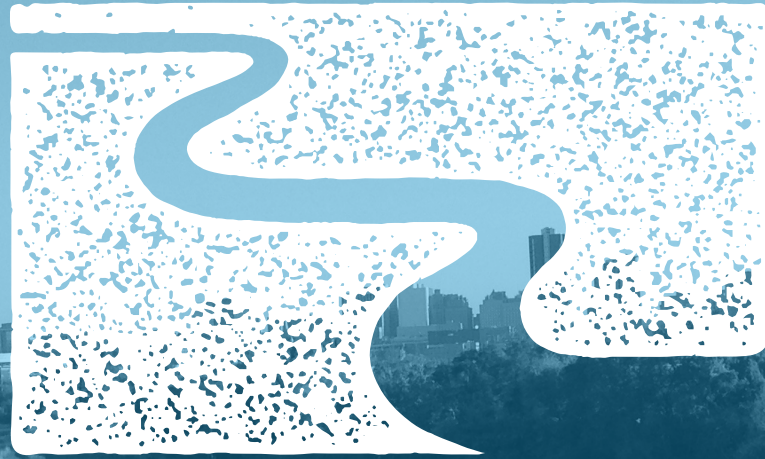
DURHAM, NORTH CAROLINA • OCT. 1-3, 2017

Learn, explore, connect.



FALL 2017 • MAINE TO FLORIDA • GREENWAY.ORG/river-relay

East Coast



River Relay



Contact Information:

Kathryn Zeringue
VA & NC Greenway Coordinator
kathryn@greenway.org

