



***Candace R. Davis, Senior Planner
Town of Wake Forest***

Bicycle & Pedestrian Completed Projects

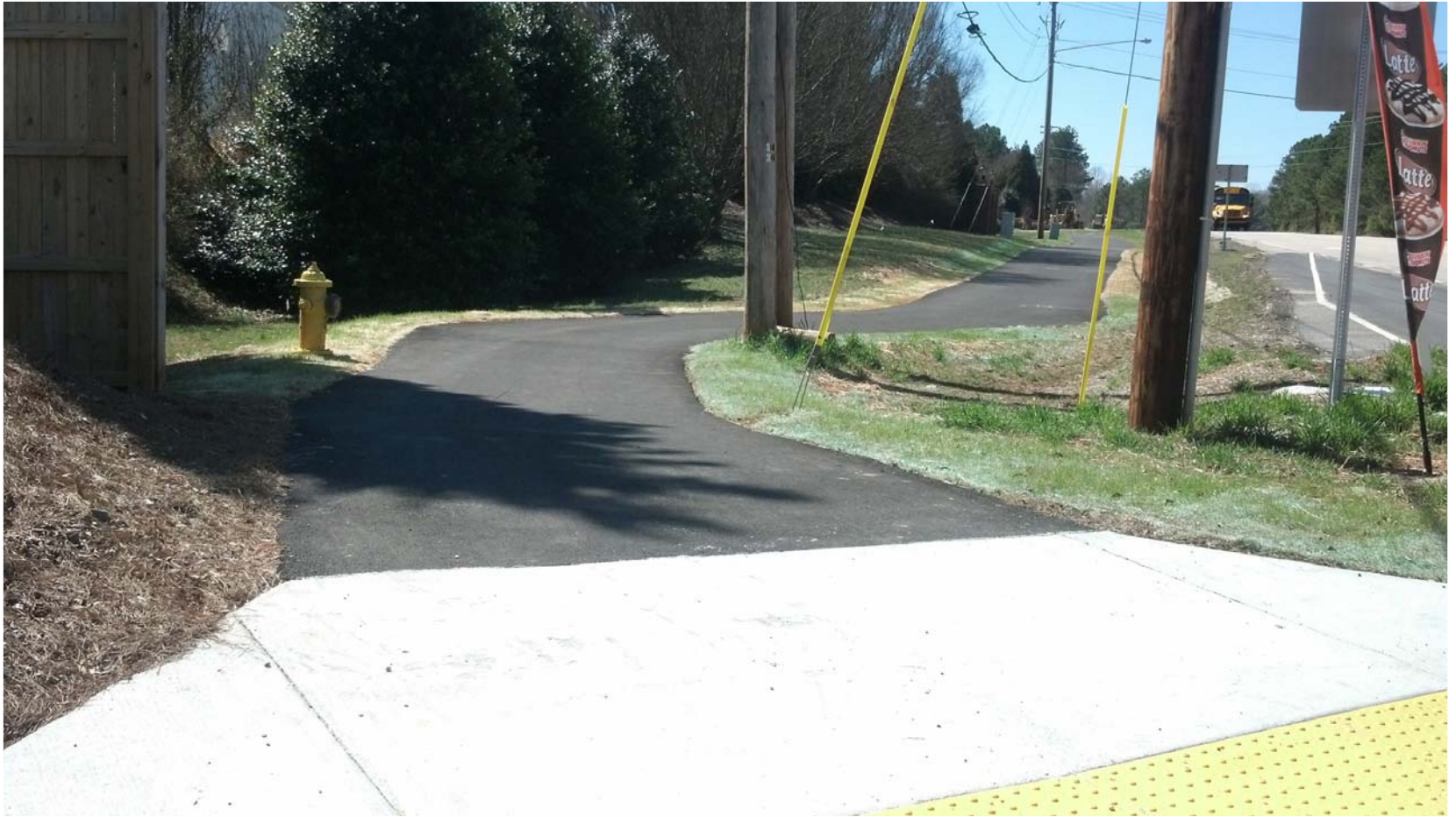
Safe Routes to School



Safe Routes to School



Other Infrastructure Improvements



Traffic Calming

Slow down for
a ***SAFER***
Wake Forest!



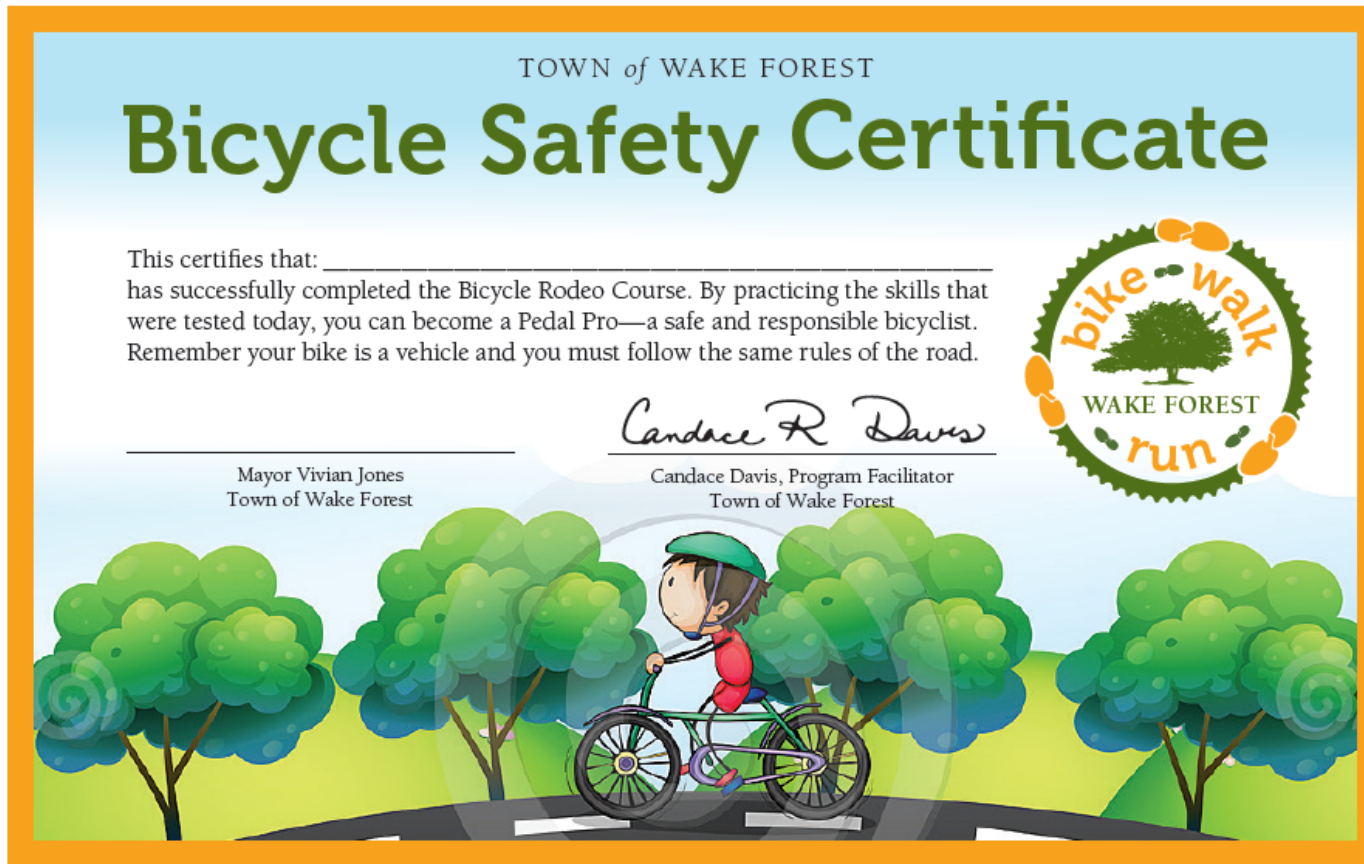
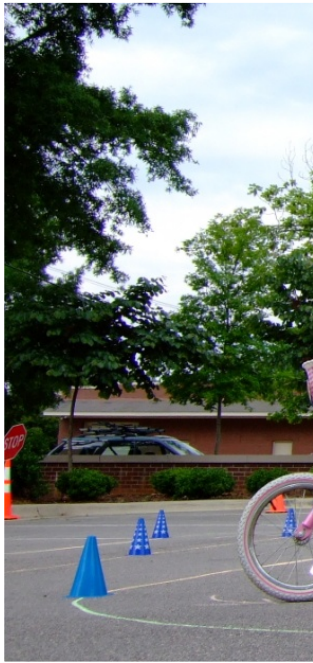
TOWN of
WAKE FOREST

DRIVE
LIKE YOUR
KIDS
LIVE HERE™

A
DRIVE LIKE YOUR KIDS LIVE HERE™
PRODUCT

www.DriveLikeYourKidsLiveHere.com

Bicycle Education

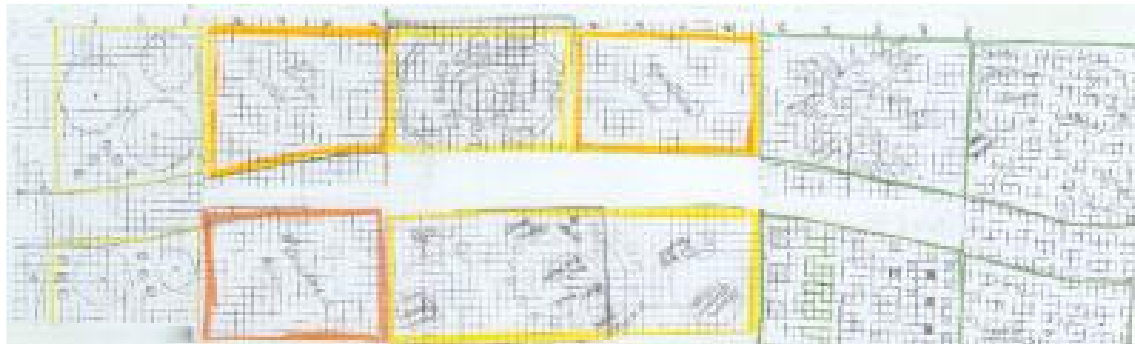
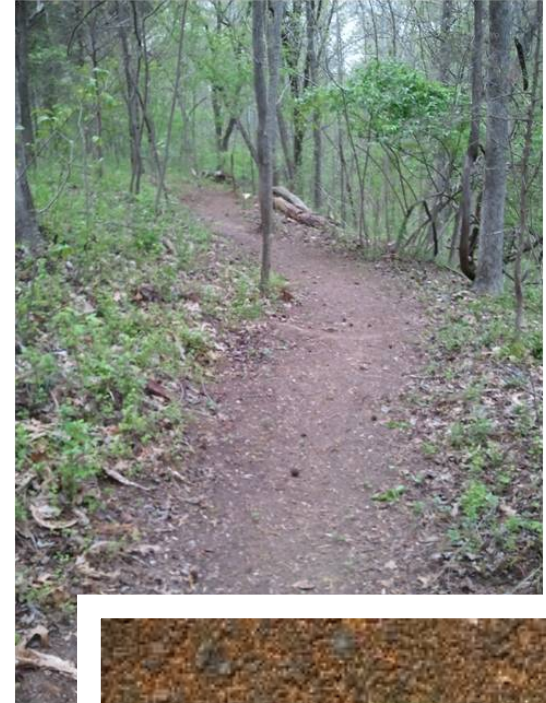


VOLUNTEERS

Adopt-A-Trail Program



Build – Maintain - Enhance

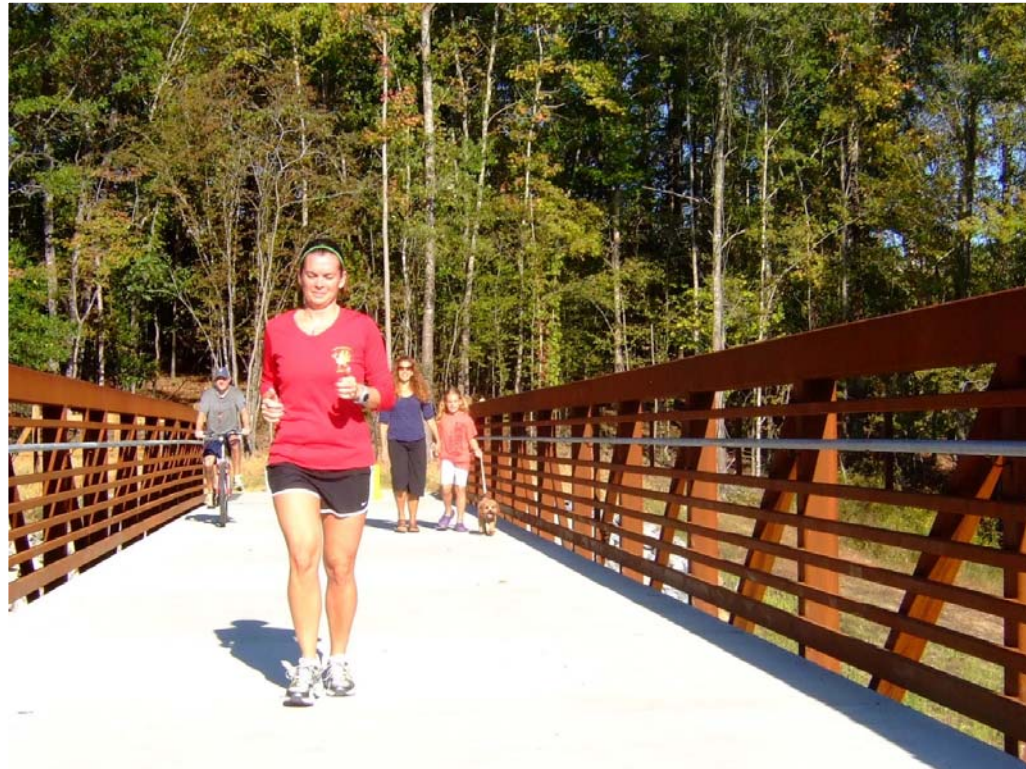


On the Horizon

Making Connections

Community to Community

Neuse River Greenway Bridge



Smith & Sanford Creek Greenway

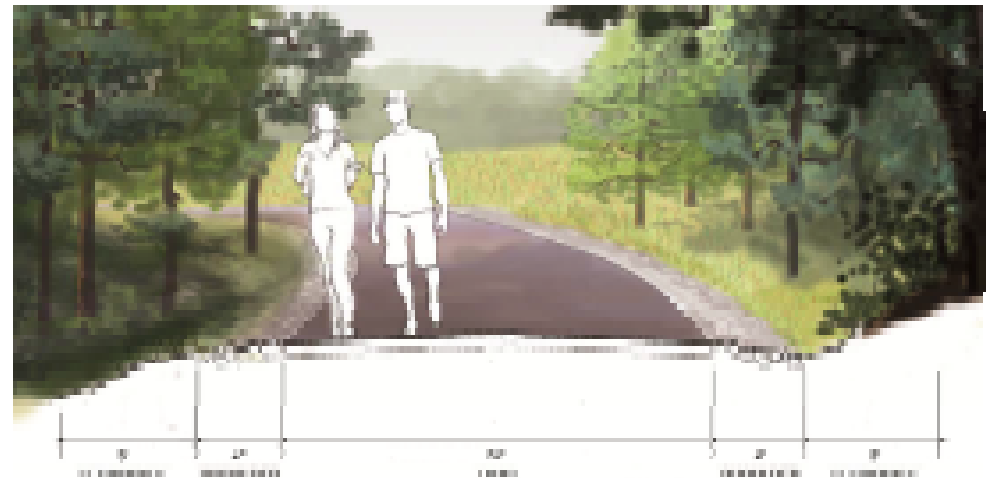
2.4 miles of greenway
1.25 miles of sidewalk

Dunn Creek Greenway Downtown Connector

.3 miles of greenway



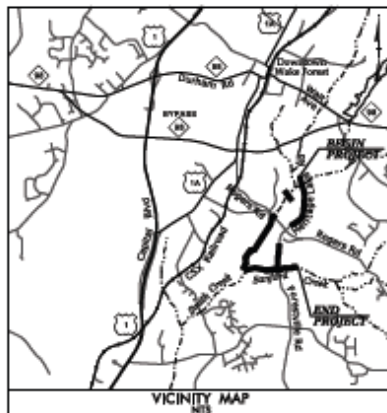
Dunn Creek Greenway What will the trail look like?



More Infrastructure



Planning Ahead



SURVEYS PROVIDED BY:
S&M Associates
Spatial Data Consultants, Inc.

GEOTECHNICAL INVESTIGATIONS BY:
Folan Engineering, Inc.

INDEX OF SHEETS	
SHEET NO.	DESCRIPTION
1	TITLE SHEET
2	CONSTRUCTION SYMBOLS
3	CONSTRUCTION ACCESS PLAN
4 TO 4B	SECTIONAL SUMMARY SHEETS
C-1 TO C-41	PLAN/PROFILE SHEETS
C-1 TO C-24	TRIAL SECTION, PROJECT NOTES AND CONSTRUCTION DETAILS
TMP-1 TO TMP-3	TRAFFIC MANAGEMENT PLANS
SD-1A TO SD-1B	EROSION CONTROL PLANS
PL-1 TO PL-11	PAVEMENT MARKING AND SIGNING PLANS
L-1 TO L-14	LANDSCAPE PLANS AND DETAILS
SI-1 TO SI-16	POST-CONSTRUCTION MAINTENANCE PLANS
SI-1 TO SI-16	SECTIONAL SUMMARY SHEETS

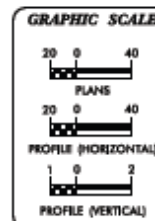
OWNER HERBERT CREEVER AND AGREE TO TAKE SUCH ACTION AS MAY BE REQUIRED BY THE TOWN OF WAKE FOREST TO CORRECT ANY ERRORS, OMISSIONS, OR NON-COMPLIANCE WITH TOWN STANDARDS AND/OR CONDITIONS DESCRIBED IN THE CONSTRUCTION PLAN, INCLUDING RE-SUBMISSION OR RE-REVISION OF THIS CONSTRUCTION PLAN WITH THE APPROPRIATE CORRECTIONS AND/OR REVISIONS.

OWNER _____ DATE _____

SMITH AND SANFORD CREEK MULTI-USE PATH

FROM ROGERS ROAD TO MARSHALL FARM ROAD AND
ALONG HERITAGE LAKE ROAD

TIP PROJECT: C-5164



THESE PLANS HAVE BEEN APPROVED FOR
CONSTRUCTION BY THE TOWN OF WAKE FOREST.

ENGINEERING DEPARTMENT	DATE
PUBLIC WORKS DEPARTMENT	DATE
EROSION & SEDIMENT CONTROL	DATE
CONSTRUCTION INSPECTOR	DATE
FIRE PREVENTION	DATE
ACCESSIBILITY	DATE
PLANNING DEPARTMENT	DATE
PARKS AND RECREATION	DATE
CITY OF RALEIGH PUBLIC UTILITIES DEPARTMENT	DATE

EXECUTION OF THIS CONSTRUCTION PLAN BY THE REVIEW ENGINEER FOR THE TOWN OF WAKE FOREST IN NO WAY LIMITS THE RESPONSIBILITY OF THE OWNER AND ENGINEER OF RECORD WITH REGARD TO COMPLIANCE WITH ALL FEDERAL, STATE, AND LOCAL STANDARDS AND/OR CONDITIONS.

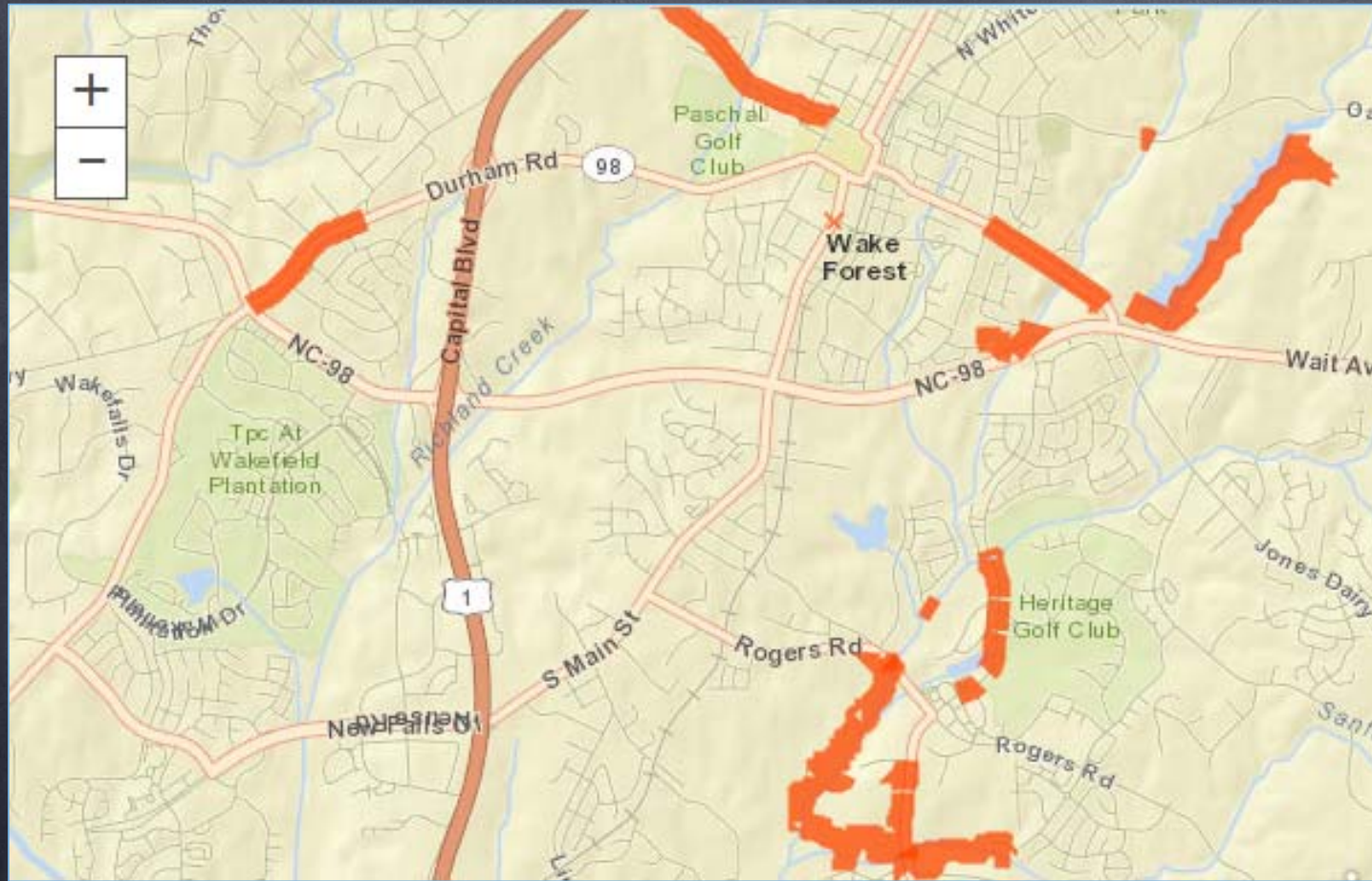
ALL PUBLIC FACILITIES, INCLUDING UTILITIES, SIDEWALKS, AND HANDICAP RAMPS ARE TO BE CONSTRUCTED ON ALL STREETS AS SPECIFIED BY TOWN STANDARDS. THESE FACILITIES HAVE BEEN APPROVED BY THE TOWN OF WAKE FOREST AND SHALL BE SO INSTALLED UNLESS A CHANGE IS APPROVED BY THE TOWN OF WAKE FOREST.

Connecting Art to Infrastructure

Comprehensive Wayfinding Signage Plan for Parks & Greenways



Citizens to Information



Bike Walk Run

MAP

WAKE FOREST



PUBLISHED BY THE TOWN OF WAKE FOREST

More than a Map



Thank you!

**Candace R. Davis, Senior Planner
Town of Wake Forest
cdavis@wakeforestnc.gov**

<http://www.wakeforestnc.gov/transportation-planning.aspx>