



Rainer Dammers, Chair
Bicycle and Pedestrian Advisory Board
will cease to operate on June 30, 2014

2020

CHAPEL HILL
OUR TOWN. OUR VISION.

Connected Community:

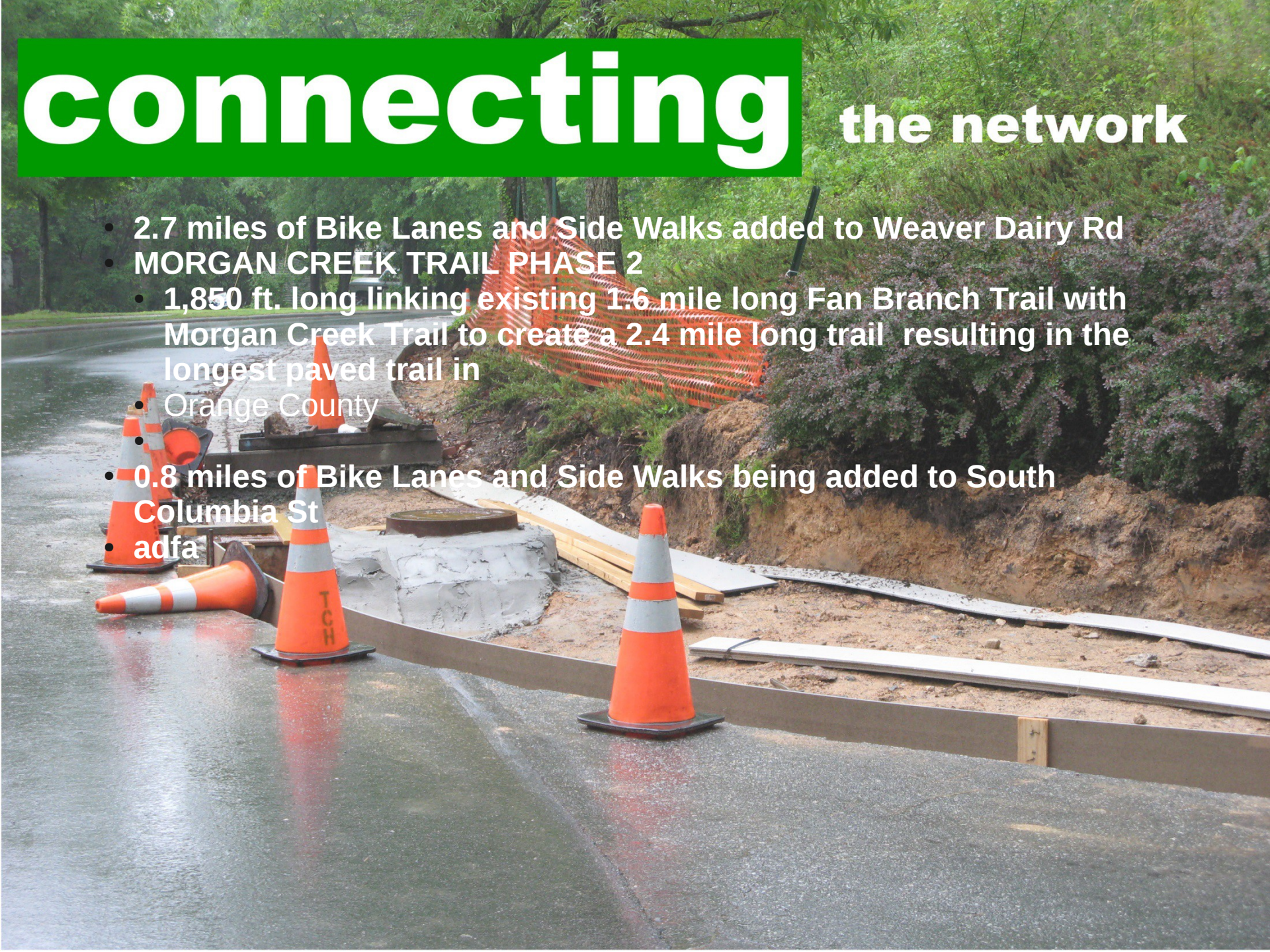
Implement a bikeable, walkable, green communities plan by 2020



- Transportation & Connectivity Advisory Board
 - Replacing BPAB and Transit boards starting in July 2014
 - Advise, advocate, and plan for comprehensive, safe, effective, and sustainable transportation and connectivity.
 - 12 seats include at least one Bike Advocate, one Greenways advocate and 3 regional connectivity seats
- Form based code adopted and being implemented
- Bicycle Master Plan
 - Draft plan reviewed and endorsed by town advisory boards
 - Review and decision to adopt by Town Council planned for June 2014
- Bicycle Alliance Chapel Hill advocacy group founded

connecting the network

- 2.7 miles of Bike Lanes and Side Walks added to Weaver Dairy Rd
- MORGAN CREEK TRAIL PHASE 2
 - 1,850 ft. long linking existing 1.6 mile long Fan Branch Trail with Morgan Creek Trail to create a 2.4 mile long trail resulting in the longest paved trail in Orange County
 - 0.8 miles of Bike Lanes and Side Walks being added to South Columbia St
 - adfa



2020

CHAPEL HILL
OUR TOWN. OUR VISION.

Form Based Code:

Applied to Ephesus Church/Fordham Blvd Small Area Plan

- Guiding principles:
 - Respect for the Chapel Hill environment and values
 - Assist in meeting market demands for retail, offices, and residences
 - Support preservation of adjacent neighborhoods
 - Improved corridor bus service, regional transit via LRT
 - increasing pedestrian/bicycling character
 - Improve the quality of the suburban fabric



Preparing Data to Match Transect

Downtown Center	Urban Neighborhood	Suburban Center →
Downtown Chapel Hill	Neighborhood Just North of Downtown Chapel Hill	Ephesus Church Road/ Fordham Boulevard Planning Site
Net Density = 22.4 HHs/Acre Transportation Costs % Income = 19% Average Block Size = 18.3 acres VMT/HH = 13,526	Net Density = 5 HHs/Acre Transportation Costs % Income = 23% Average Block Size = 10 acres VMT/HH = 15,555	Net Density = 2.2 HHs/Acre Transportation Costs % Income = 27% Average Block Size = 20.6 acres VMT/HH = 19,469



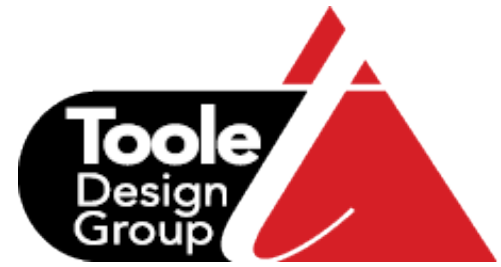
Block Group 371350116001



Block Group 371350113001



Block Group 371350121004



DRAFT



The Vision

“Chapel Hill is a community where biking is a safe and convenient everyday choice.”

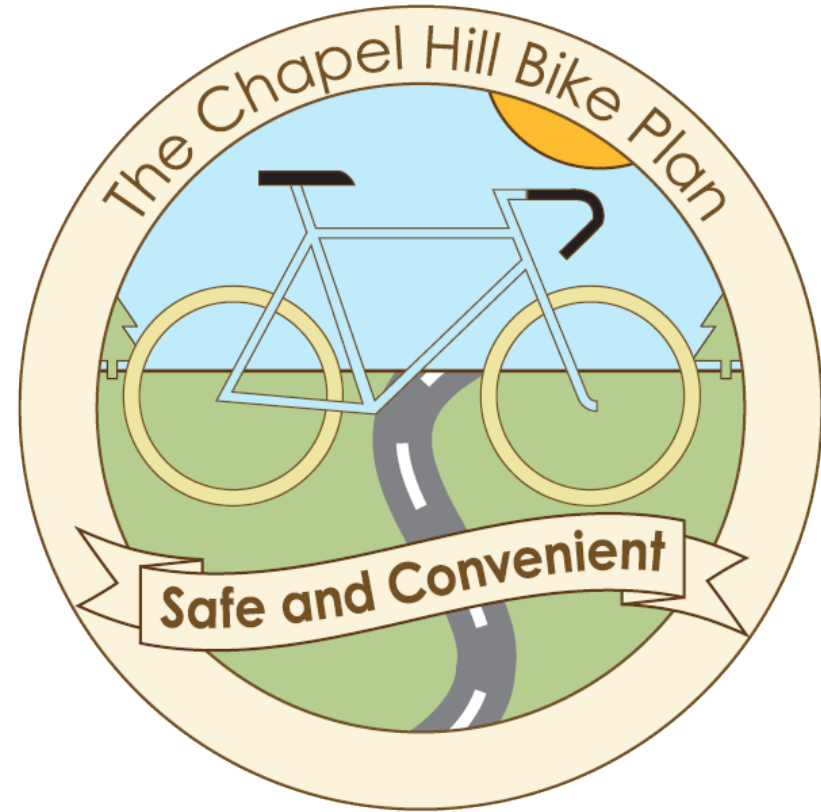


DESIGN
CHAPEL HILL 2020
CONNECTIONS · CHOICES · COMMUNITY



Plan Goals

1. Improve the safety of bicycling for all types of riders
2. Foster the development of a culture where bicycling is an accepted and viable mode choice in Chapel Hill
3. Develop a connected network of bicycle facilities throughout Chapel Hill
4. Increase bicycle use for all types of trips



P_P

Plan Process

O_s

Outreach
Summary

E_c

Existing Conditions

F_R

Facility
Recommendations

P_R

Policy & Program
Recommendations

I_s

Implementation
Strategies

P_P

Plan Process



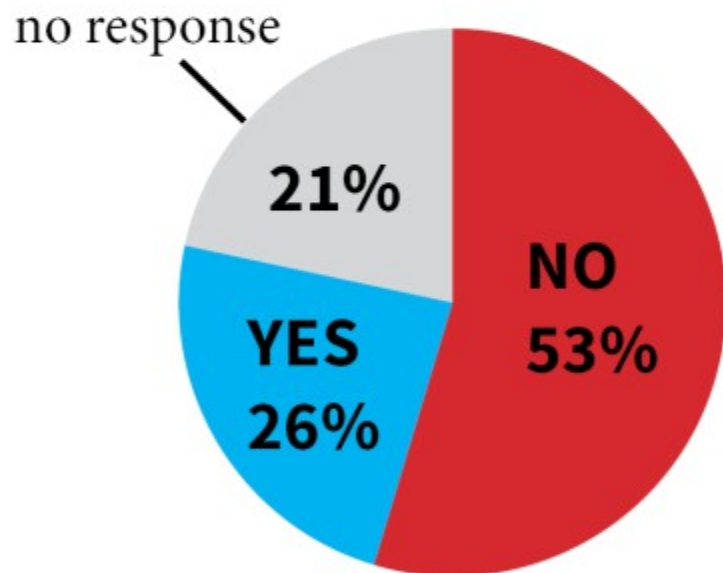
1	Project Start	Apr
2	Public & Stakeholder Outreach	May - Oct
3	Data & Fieldwork	May - Dec
4	Draft Plan & Review	Nov - May
5	Final Plan	May - Jun

2013

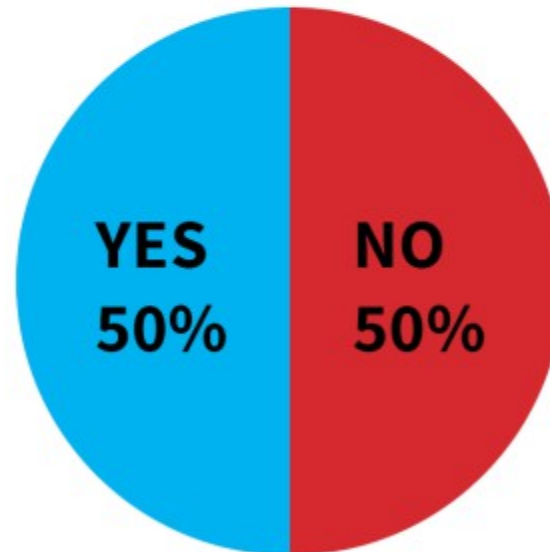
2014

2013 COMMUNITY SURVEY QUESTIONS

Within the Town limits, do you feel safe cycling?



Does anyone in your household ride a bicycle?



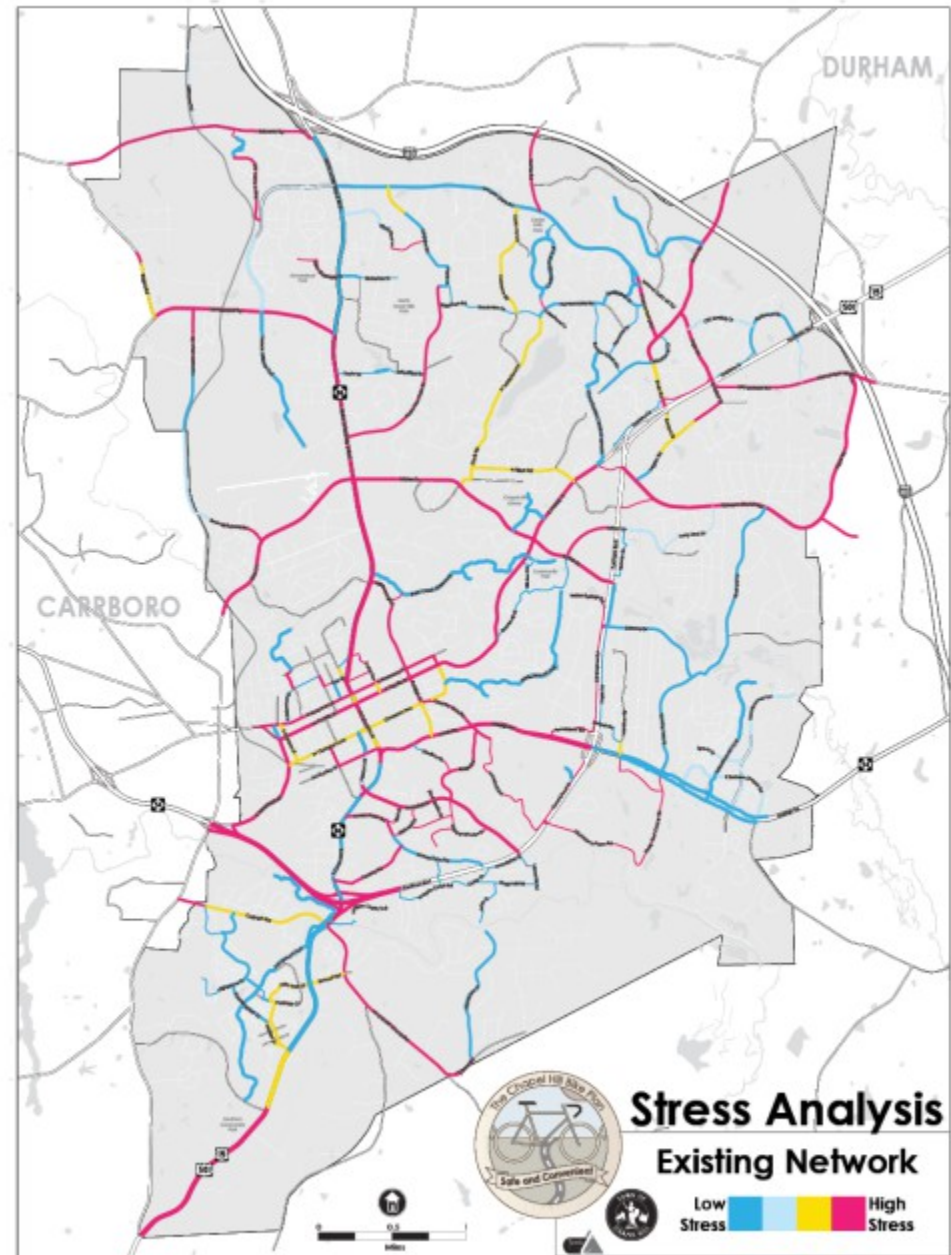
For what purpose do they ride?

Recreation Only	65%
Commuter to Work/School	9%
Recreation and Commuting	26%

E_c

Existing Conditions

The Town
was mapped
on this
**Level of
Traffic
Stress Scale**



FR

Facility
Recommendations

To encourage the Interested but Concerned group to ride their bikes more, building a network of safe and low-stress bicycle facilities is necessary.



FR

Facility Recommendations

General Bicycle Facility Recommendations

RECOMMENDATIONS

- Provide the maximum bicycle quality of service for bicycle facilities.
- Provide a minimum green signal clearance interval for bicyclists at all intersections
- Assess and repair/replace existing facilities
- Add new bicycle facilities during street repaving when possible.
- Alter maintenance schedules/procedures to keep bike facilities functional
- Provide pedestrian-scale lighting to improve roadway and greenway safety
- Provide bicyclist accommodations on all bridges

PR

Policy & Program Recommendations

POLICY RECOMMENDATIONS

- Revise Design Manual
- Revise traffic code
- Develop an online hazard reporting tool
- Include bike considerations in Focus Area Plans, Form-Based Codes and Land Use Management Ordinance Updates
- Continue enforcement of traffic laws
- Consider alternative enforcement actions



P_R

Policy & Program Recommendations



PROGRAM RECOMMENDATIONS

- **Educate public about bicycling and new bicycle facilities**
- **Partner with Carrboro for an annual “open streets” event.**
- **Create annual report on bicycle and vehicular crashes**
- **Develop and Maintain a Town bicycling webpage**
- **Host a public bike ride series**
- **Host more youth bike events**

Is

Implementation
Strategies

IMPLEMENTATION STRATEGIES

- **Establish Town Bike Ped Coordinator**
- **Increase Inter-Departmental Coordination**
- **Develop an online hazard reporting tool**
- **Support local advocacy groups and bicycle non-profit organizations**
- **Ensure new Advisory Board representation**



Is

Implementation
Strategies

Bicycle Alliance Chapel Hill (BACH)

making biking a safe and convenient
everyday choice in Chapel Hill

1. Modelled after the Carrboro Bicycle Coalition after the NC Bike Summit
2. Already 32 active members and 100+ on the informal listserv
3. Focus to advocate for the implementation of the Bike Plan
4. Organize cycling related events & education programs

