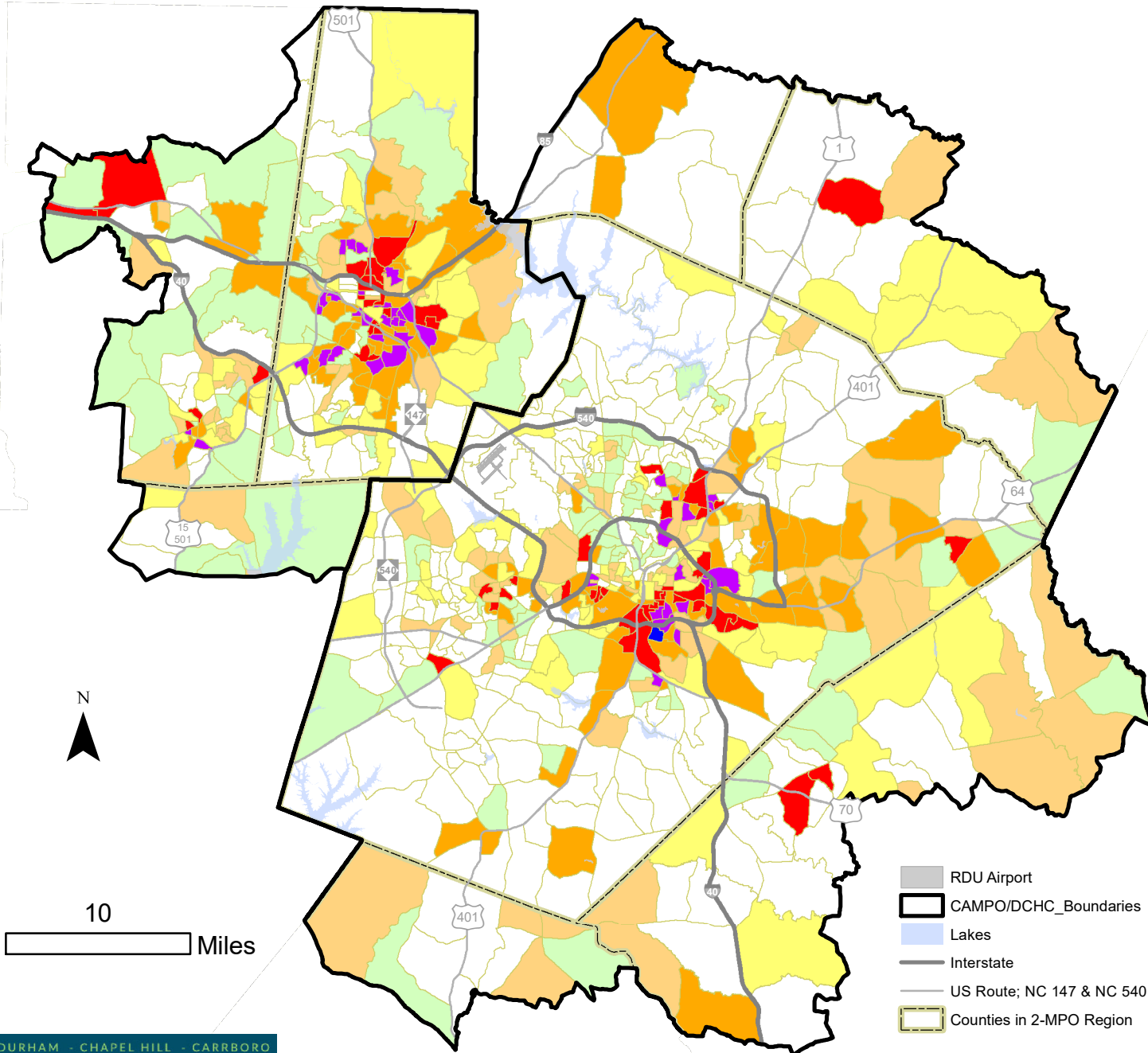


# Regional 75th Percentile Number of Indicators Overlap



This map is meant to be a regional-scale tool for the MPOs to use in regional-scale planning and regional-scale outreach. It does not identify every community that might meet Title VI protected status, but seeks to identify where there are concentrations of Title VI and other populations subject to protections under the law and associated policies. When working at a more local scale, additional identification may be needed.

The map shows the overlap of 6 indicators at the Census Block Group: Non-white race, Hispanic/Latino Origin, Individuals below 150% of the federal poverty threshold, Linguistic Isolation, Zero-car Households, and Age 70 and over. Each indicator has a threshold calculated for the 75th percentile (top 25%), and any Block Group that meets or exceeds the threshold is included.

The Capital Area Metropolitan Planning Organization, in cooperation with other mapping organizations, is committed to offering its users accurate, useful, and current information about the Region. Although every effort has been made to ensure the accuracy of information, errors and conditions originating from physical sources used to develop the database may be reflected in the map and/or data supplied. The user must be aware of data conditions and bear responsibility for the appropriate use of the information with respect to possible errors, original map scale, collection methodology, currency of data, and other conditions specific to certain data.



10

Miles

- RDU Airport
- CAMPO/DCHC\_Boundaries
- Lakes
- Interstate
- US Route; NC 147 & NC 540
- Counties in 2-MPO Region

## Number of Overlapping Indicators

- 0
- 1, ONLY TRIGGERS AGE
- 1, NOT AGE
- 2
- 3
- 4
- 5
- 6