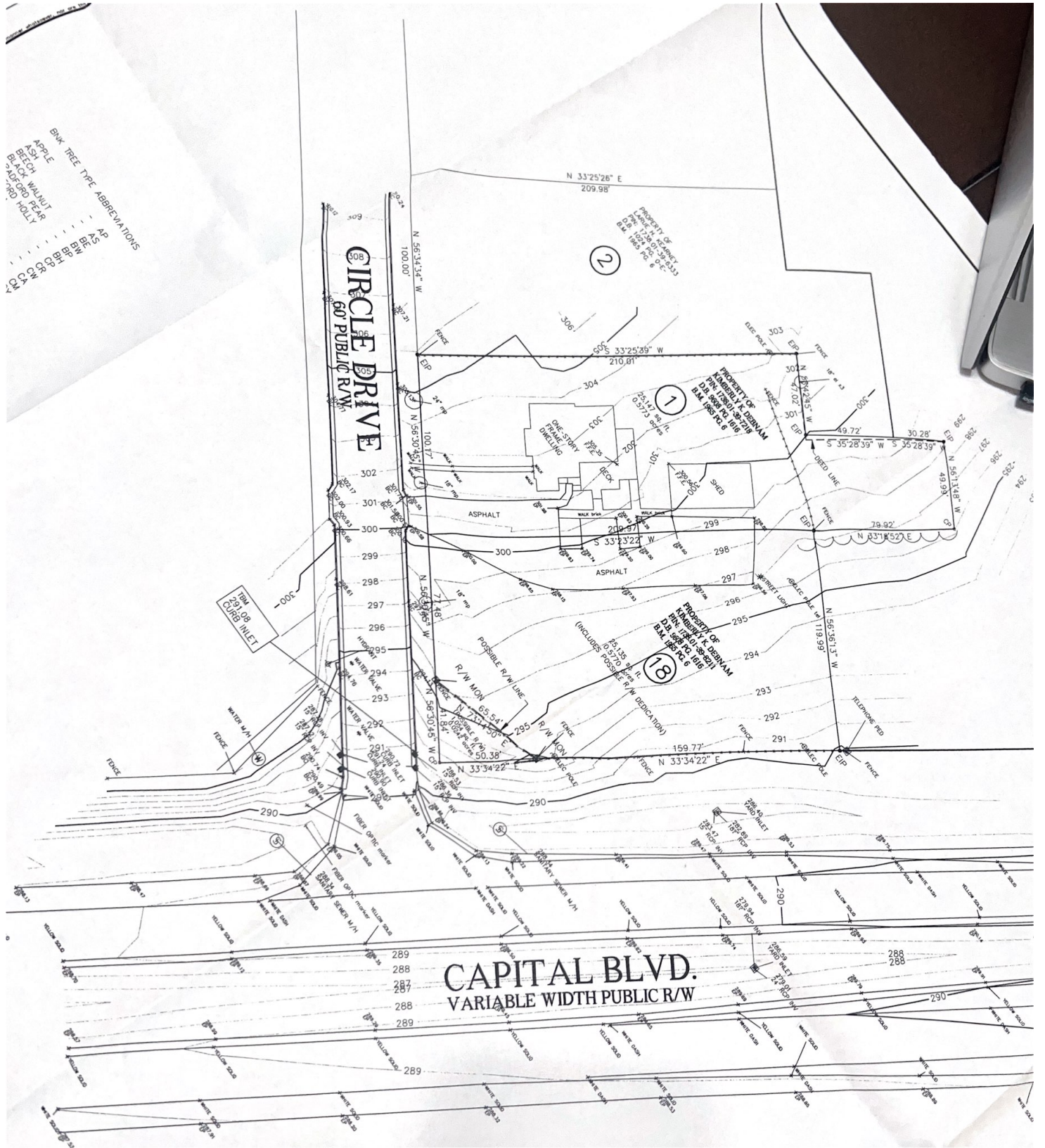


BANK TREE TYPE ABBREVIATIONS  
 APPLE  
 ASH  
 BLACK WALNUT  
 BLACK PEAR  
 BUCKEYE  
 CHERRY  
 CYPRESS  
 GUM  
 HICKORY  
 LARCH  
 MAPLE  
 MULBERRY  
 OAK  
 PINE  
 SYPHIX  
 TULAR  
 YEW



**CAPITAL BLVD.**  
 VARIABLE WIDTH PUBLIC R/W



A 10' wide utility easement, 10'

20'NS

**CIRCLE DRIVE**  
60' PUBLIC R/W

N 33°25'26" E  
209.98'

2

PROPERTY OF  
KIMBERLY K. DENHAM  
D.B.K. 1985 P.C. 6  
B.M. 1985 P.C. 6

PROPERTY OF  
KIMBERLY K. DENHAM  
D.B.K. 1985 P.C. 6  
B.M. 1985 P.C. 6

18

PROPERTY OF  
KIMBERLY K. DENHAM  
D.B.K. 1985 P.C. 6  
B.M. 1985 P.C. 6  
(INCLUDES POSSIBLE R/W DEDICATION)

**CAPITAL BLVD.**  
VARIABLE WIDTH PUBLIC R/W

