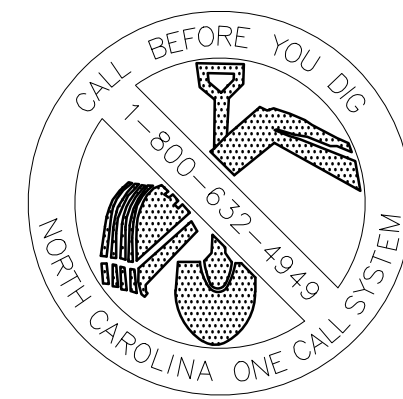


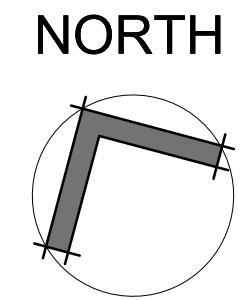
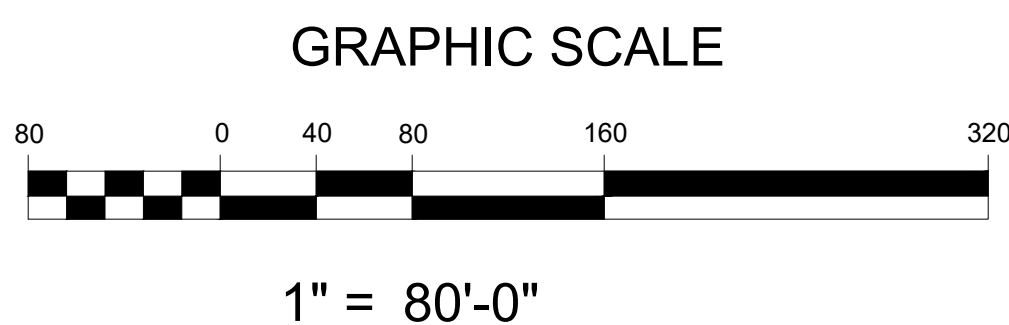
LAYOUT NOTES

- ALL TRAFFIC CONTROL SIGNAGE, DEVICES, AND STRIPING TO CONFORM TO THE MANUAL ON UNIFORM TRAFFIC CONTROL DEVICES (M.U.T.C.D.).
- ALL PAVING CUTS SHALL BE MADE BY SAW CUTS.
- EXISTING ELEVATIONS SHALL BE FIELD VERIFIED AND MATCHED.
- CONTRACTOR TO COORDINATE ANY CHANGES IN FIELD CONDITIONS THAT MAY REVISE THE DESIGN WITH DESIGNER OF RECORD PRIOR TO PROCEEDING.
- ALL DIMENSIONS ARE TO FACE OF CURB OR TO FINISHED FACE OF BUILDING UNLESS NOTED OTHERWISE.
- ALL RADII ON CURBS SHALL BE 5'-0" UNLESS NOTED OTHERWISE.
- ALL ACCESSIBLE PARKING SPACES SHALL DISPLAY APPROVED RESERVED PARKING SPACE SIGNAGE AS PRESCRIBED BY THE AMERICANS WITH DISABILITIES ACT (ADA), M.U.T.C.D., AND ANY ADDITIONAL STATE AND/OR LOCAL REQUIREMENTS. HEIGHT FROM FINISHED GRADE TO BOTTOM OF SIGN IN ANY LOCATION SHALL BE 84" MINIMUM.
- ALL WORK WITHIN THE RIGHT OF WAY OF ALL ROADS AND HIGHWAYS SHALL BE IN ACCORDANCE WITH THE STANDARDS AND SPECIFICATIONS OF THE APPROPRIATE STATE AND/OR LOCAL JURISDICTION. CONTRACTOR SHALL SECURE ALL NECESSARY DRIVEWAY AND ENCROACHMENT PERMITS PRIOR TO CONSTRUCTION. IF NECESSARY, CONTRACTOR SHALL PROVIDE TRAFFIC CONTROL DURING CONSTRUCTION WITHIN THE RIGHT OF WAY, PER WORK AREA TRAFFIC CONTROL HANDBOOK (W.A.T.C.H.) STANDARDS.
- A MINIMUM OF 18" IS TO BE MAINTAINED BETWEEN ALL GRADES / SURFACES AND TOPS OF FOOTINGS.
- SEE SHEETS C201-C204 FOR DIMENSIONING AND MATERIAL REFERENCE DESIGNATIONS.



CAUTION!!!

THE LOCATIONS AND ELEVATIONS OF EXISTING UNDERGROUND UTILITIES AS SHOWN ON THIS DRAWING ARE ONLY APPROXIMATE. NO GUARANTEE IS EITHER EXPRESS OR IMPLIED AS TO THE COMPLETENESS OF ACCURACY THEREOF. THE CONTRACTOR SHALL BE EXCLUSIVELY RESPONSIBLE FOR DETERMINING THE EXACT UTILITY LOCATIONS AND ELEVATIONS PRIOR TO THE START OF CONSTRUCTION.



BCCG
B.C. CONSTRUCTION GROUP

9829 Spencer Road
Brighton MI 48114
Main: 877-244-8562
Facsimile: 810-852-4721
www.bccgp.com

SchoolDev**EAST**
LLC

LITTLE
DIVERSIFIED ARCHITECTURAL CONSULTING

615 South College Street, Suite 1600
Charlotte, NC 28202
T: 704.525.6350
www.littleonline.com

FRANKLIN CHARTER

14111 CAPITAL BLVD.
U.S. HWY 1
WAKE FOREST, NC 27587



CONSTRUCTION DOCUMENTS

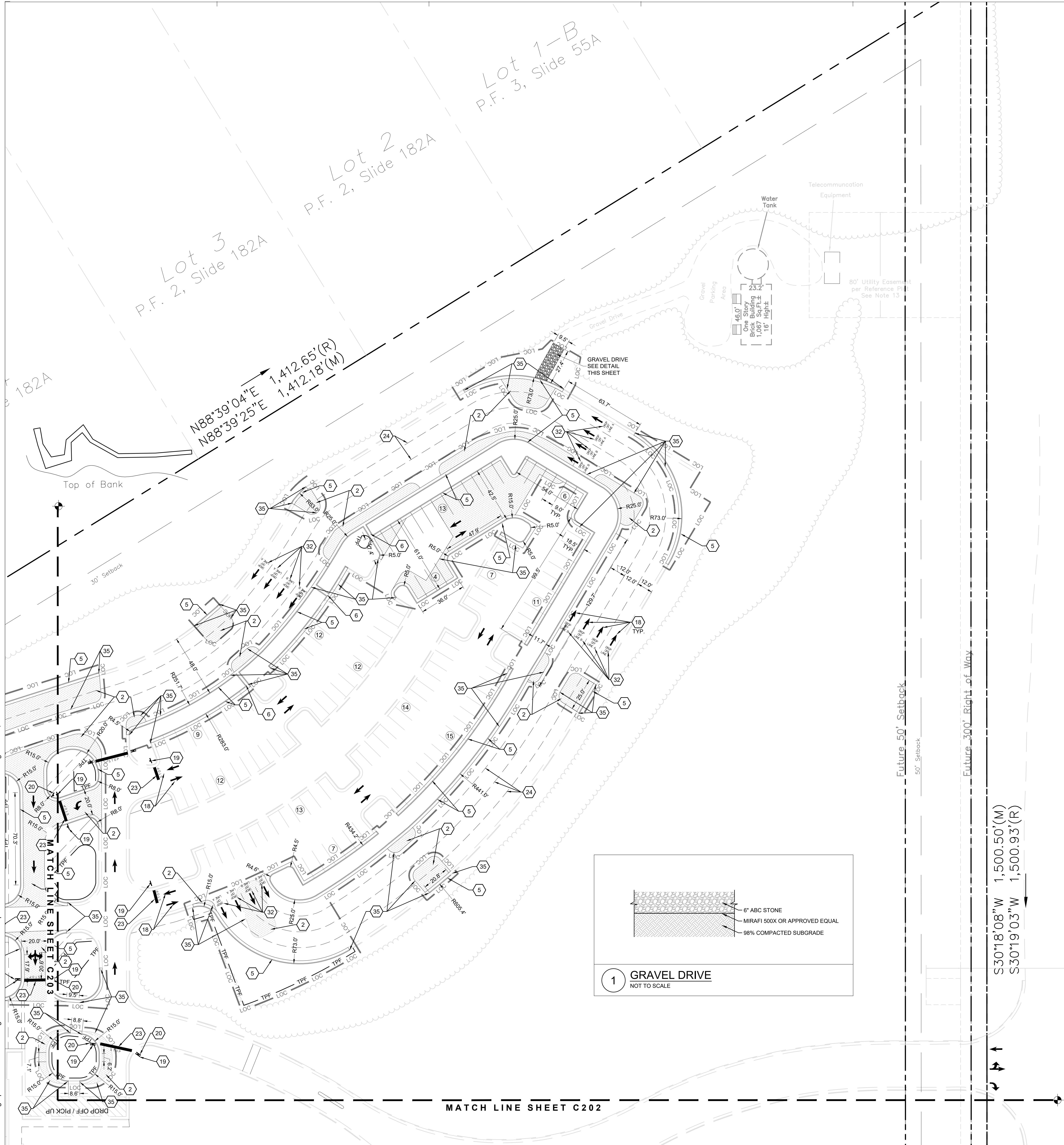
NO.	DESCRIPTION	DATE

Issue Date: December 10, 2021
Job Number: 101.16469.00
Drawn By: AW, SG, JB, EF, EJ & MVS
Checked By: DP, EF & MVS

OVERALL LAYOUT AND MATERIALS PLAN

C 200

W:\Consulting\Specialties\Land Planning\1011646900 American Leadership\4 CDC2.00-LAYOUT AND MATERIALS PLAN.dwg Dec 10, 2021 8:40am



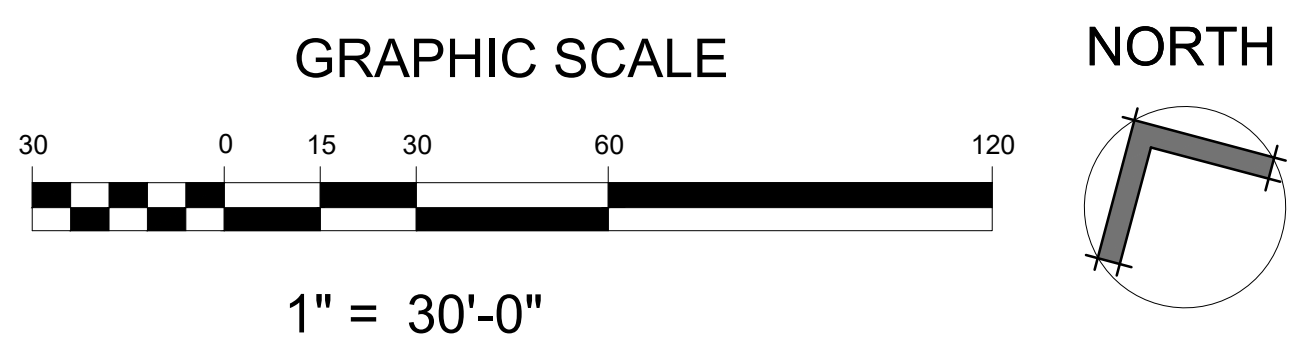
- LAYOUT NOTES**
- A. ALL TRAFFIC CONTROL SIGNAGE, DEVICES, AND STRIPING TO CONFORM TO THE MANUAL ON UNIFORM TRAFFIC CONTROL DEVICES (M.U.T.C.D.).
 - B. ALL PAVING CUTS SHALL BE MADE BY SAW CUTS.
 - C. EXISTING ELEVATIONS SHALL BE FIELD VERIFIED AND MATCHED.
 - D. CONTRACTOR TO COORDINATE ANY CHANGES IN FIELD CONDITIONS THAT MAY REVISE THE DESIGN WITH DESIGNER OF RECORD PRIOR TO PROCEEDING.
 - E. ALL DIMENSIONS ARE TO FACE OF CURB OR TO FINISHED FACE OF BUILDING UNLESS NOTED OTHERWISE.
 - F. ALL RADII ON CURBS SHALL BE 5'-0" UNLESS NOTED OTHERWISE.
 - G. ALL ACCESSIBLE PARKING SPACES SHALL DISPLAY APPROVED RESERVED PARKING SPACE SIGNAGE AS PRESCRIBED BY THE AMERICANS WITH DISABILITIES ACT (ADA), M.U.T.C.D., AND ANY ADDITIONAL STATE AND/OR LOCAL REQUIREMENTS. HEIGHT FROM FINISHED GRADE TO BOTTOM OF SIGN IN ANY LOCATION SHALL BE 84" MINIMUM.
 - H. ALL WORK WITHIN THE RIGHT OF WAY OF ALL ROADS AND HIGHWAYS SHALL BE IN ACCORDANCE WITH THE STANDARDS AND SPECIFICATIONS OF THE APPROPRIATE STATE AND/OR LOCAL JURISDICTION. CONTRACTOR SHALL SECURE ALL NECESSARY DRIVEWAY AND ENCROACHMENT PERMITS PRIOR TO CONSTRUCTION. IF NECESSARY, CONTRACTOR SHALL PROVIDE TRAFFIC CONTROL DURING CONSTRUCTION WITHIN THE RIGHT OF WAY, PER WORK AREA TRAFFIC CONTROL HANDBOOK (W.A.T.C.H.) STANDARDS.
 - I. A MINIMUM OF 18" IS TO BE MAINTAINED BETWEEN ALL GRADES / SURFACES AND TOPS OF FOOTINGS.
 - J. SEE SHEETS C201-C204 FOR DIMENSIONING AND MATERIAL REFERENCE DESIGNATIONS.

- LAYOUT LEGEND**
- 1. ALL EXISTING PAVEMENT TO BE CLEANED AND SEAL COATED
 - 2. ASPHALT - SEE DETAIL 1/C600
 - 3. HEAVY DUTY CONCRETE - SEE DETAIL 2/C6001
 - 4. GRASSPAVE - SEE DETAIL 3/C600
 - 5. 2'-6" STANDARD CURB AND GUTTER - SEE DETAIL 4/C600
 - 6. CONCRETE FLUME - SEE DETAIL 5/C600
 - 7. CONCRETE SIDEWALK WITH 1" DEEP HAND TROWELED SCORE JOINTS AS ILLUSTRATED - SEE DETAIL 6/C700
 - 8. CONCRETE SIDEWALK TO BE FLUSH WITH ASPHALT PAVEMENT - SEE DETAIL 8/C600
 - 9. CONCRETE STAIRS WITH HANDRAILS - SEE DETAIL 10/C600
 - 10. ACCESSIBLE RAMP - SEE DETAIL 11/C600
 - 11. ACCESSIBLE EGRESS LANDING - SEE DETAIL 12/C600
 - 12. DASHED LINE INDICATES FLUSH CURB - SEE DETAIL 8/C600
 - 13. 2'-6" MOUNTABLE CURB AND GUTTER - SEE DETAIL 5/C600
 - 14. CURB TAPER (11" U.N.O.) - SEE DETAIL 7/C600
 - 15. CONCRETE MEDIAN - SEE DETAIL 13/C600
 - 16. CAST IN PLACE RETAINING WALL - SEE STRUCTURAL PLANS FOR DETAIL
 - 17. MODULAR BLOCK RETAINING WALL - SEE DETAIL 1/C601
 - 18. DIRECTION ARROW (TYP.) - SEE DETAIL 9/C600 AND GENERAL NOTE A.
 - 19. 30" "STOP" SIGN - MUTCD R1-1
 - 20. "DO NOT ENTER" SIGN - MUTCD L29
 - 21. "FIRE LANE" SIGN - MUTCD R7-32
 - 22. 4" WIDE PAINTED PARKING STRIPES (WHITE)
 - 23. 18" WIDE PAINTED STOP BAR (WHITE) WITH 24" TALL PAINTED "STOP"
 - 24. 6" WIDE DASHED LANE LINES
 - 25. ACCESSIBLE STRIPING AND SIGNAGE - SEE DETAIL 3/C601 AND 7/C601
 - 26. GRAVEL SHOULDER - SEE DETAIL 4/C601
 - 27. PIPE SWING GATE (SEE PLAN FOR WIDTHS) - SEE DETAIL 5/C601
 - 28. GUARD RAIL - SEE DETAIL 6/C601
 - 29. BOLLARDS - SEE DETAIL 7/C601
 - 30. WHEEL STOPS (13 TOTAL) - SEE DETAIL 8/C601
 - 31. LIGHT POLE. SEE ELECTRICAL PLANS FOR PHOTOMETRIC AND LIGHT SPECIFICATIONS - SEE DEMOLITION AND SITE ELECTRICAL PLANS FOR ADDITIONAL INFORMATION.
 - 32. WHITE PAINTED 24" TALL LETTERS FOR "DROP OFF A" AND "DROP OFF B" - SEE PLAN
 - 33. 4' BLACK PVC COATED CHAIN LINK FENCE - SEE DETAIL 9/C600
 - 34. 5' WIDE SWING GATES - SEE DETAIL 10/C600
 - 35. ALL NEW IMPROVEMENTS TO BE FLUSH WITH EXISTING IMPROVEMENTS TO REMAIN.
 - 36. CONTRACTOR TO INSTALL TEMPORARY SEEDING IN ALL DISTURBED AREAS NOT COVERED BY PAVEMENT UPON COMPLETION OF CONSTRUCTION. CONTRACTOR TO INSTALL PERMANENT SEEDING DURING APPROPRIATE SEEDING SEASON. SEE LANDSCAPE PLANS FOR SEEDING SPECIFICATIONS.



CAUTION!!!

THE LOCATIONS AND ELEVATIONS OF EXISTING UNDERGROUND UTILITIES AS SHOWN ON THIS DRAWING ARE ONLY APPROXIMATE. NO GUARANTEE IS EITHER EXPRESS OR IMPLIED AS TO THE COMPLETENESS OF ACCURACY THEREOF. THE CONTRACTOR SHALL BE EXCLUSIVELY RESPONSIBLE FOR DETERMINING THE EXACT UTILITY LOCATIONS AND ELEVATIONS PRIOR TO THE START OF CONSTRUCTION.



9829 Spencer Road
Brighton MI 48114
Main: 877-244-8562
Facsimile: 810-852-4721
www.bccgp.com

SchoolDevEAST LLC

LITTLE
DIVERSIFIED ARCHITECTURAL CONSULTING

615 South College Street, Suite 1600
Charlotte, NC 28202
T: 704.525.6350
www.littleonline.com

FRANKLIN CHARTER

14111 CAPITAL BLVD.
U.S. HWY 1
WAKE FOREST, NC 27587

David Van Sickle
No. 0094
12/10/21
DAVID S. VAN SICKLE
P.E.

CONSTRUCTION DOCUMENTS

NO.	DESCRIPTION	DATE

Issue Date: December 10, 2021

Job Number: 101.16469.00

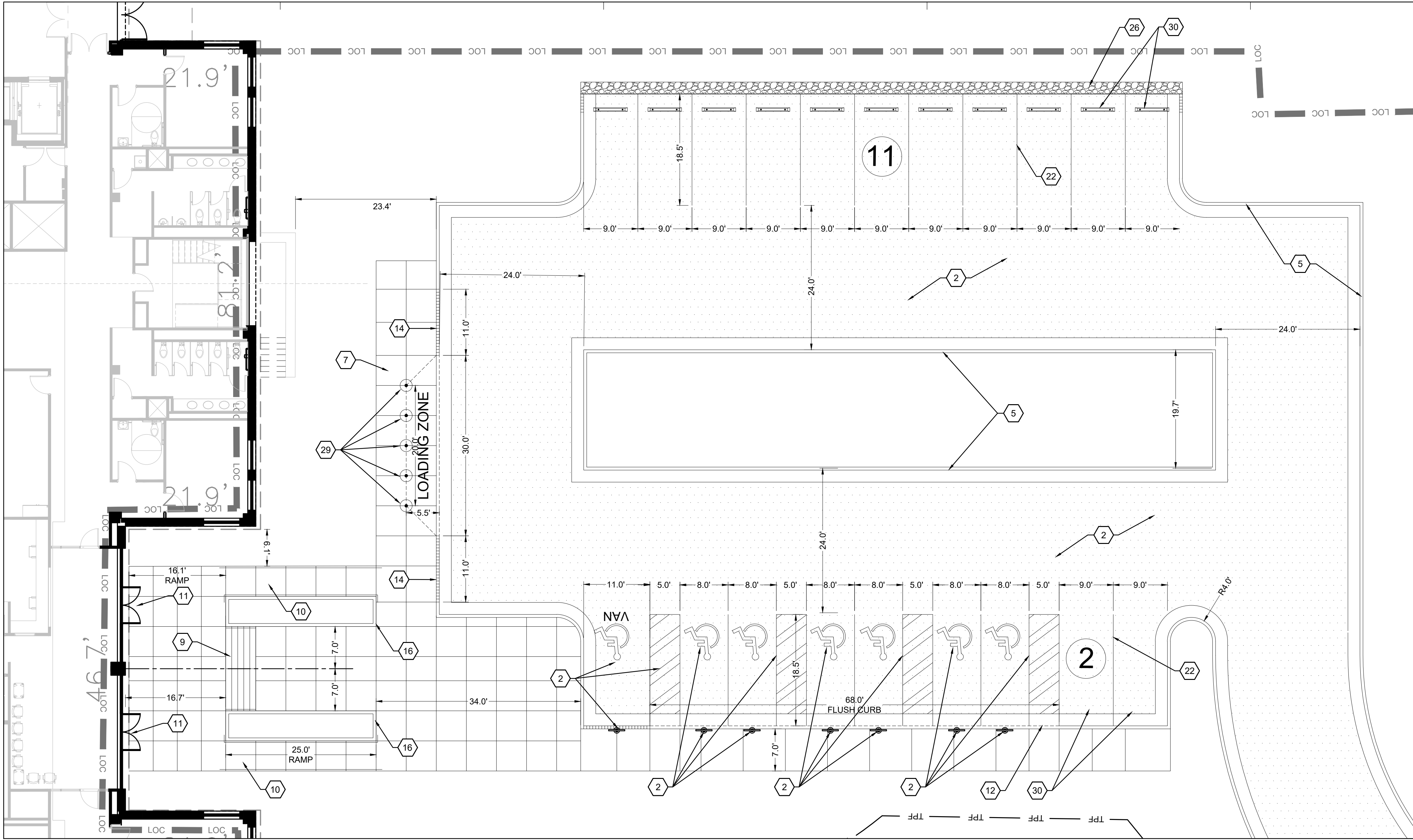
Drawn By: AW, SG, JB, EF, EJ & MVS

Checked By: DP, EF & MVS

LAYOUT AND MATERIALS PLAN

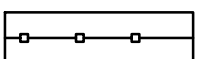
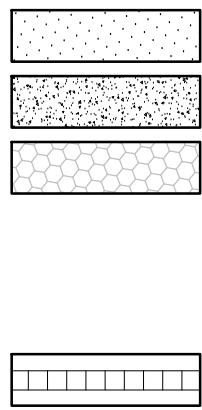
C 201

W:\Consulting Specialties\Land Planning\1011646900 American Leadership\4 CD\C2.00-LAYOUT AND MATERIALS PLAN.dwg Dec 9, 2021 4:09pm



LAYOUT LEGEND

- ALL EXISTING PAVEMENT TO BE CLEANED AND SEAL COATED
- ASPHALT - SEE DETAIL 1/C600
- HEAVY DUTY CONCRETE - SEE DETAIL 2/C6001
- GRASSPAVE - SEE DETAIL 3/C600
- 2'-6" STANDARD CURB AND GUTTER - SEE DETAIL 4/C600
- CONCRETE FLUME - SEE DETAIL 5/C600
- CONCRETE SIDEWALK WITH 1" DEEP HAND TROWELED SCORE JOINTS AS ILLUSTRATED - SEE DETAIL 6/C700
- CONCRETE SIDEWALK TO BE FLUSH WITH ASPHALT PAVEMENT - SEE DETAIL 8/C600
- CONCRETE STAIRS WITH HANDRAILS - SEE DETAIL 10/C600
- ACCESSIBLE RAMP - SEE DETAIL 11/C600
- ACCESSIBLE EGRESS LANDING - SEE DETAIL 12/C600
- DASHED LINE INDICATES FLUSH CURB - SEE DETAIL 8/C600
- 2'-6" MOUNTABLE CURB AND GUTTER - SEE DETAIL 5/C600
- CURB TAPER (11" U.N.O.) - SEE DETAIL 7/C600
- CONCRETE MEDIAN - SEE DETAIL 13/C600
- CAST IN PLACE RETAINING WALL - SEE STRUCTURAL PLANS FOR DETAIL
- MODULAR BLOCK RETAINING WALL - SEE DETAIL 1/C601
- DIRECTION ARROW (TYP.) - SEE DETAIL 9/C600 AND GENERAL NOTE A.
- 30" "STOP" SIGN - MUTCD R1-1
- "DO NOT ENTER" SIGN - MUTCD L29
- "FIRE LANE" SIGN - MUTCD R7-32
- 4" WIDE PAINTED PARKING STRIPES (WHITE)
- 18" WIDE PAINTED STOP BAR (WHITE) WITH 24" TALL PAINTED "STOP"
- 6" WIDE DASHED LANE LINES
- ACCESSIBLE STRIPING AND SIGNAGE - SEE DETAIL 3/C601 AND 7/C601
- GRAVEL SHOULDER - SEE DETAIL 4/C601
- PIPE SWING GATE (SEE PLAN FOR WIDTHS) - SEE DETAIL 5/C601
- GUARD RAIL - SEE DETAIL 6/C601
- BOLLARDS - SEE DETAIL 7/C601
- WHEEL STOPS (13 TOTAL) - SEE DETAIL 8/C601
- LIGHT POLE - SEE ELECTRICAL PLANS FOR PHOTOMETRIC AND LIGHT SPECIFICATIONS - SEE DEMOLITION AND SITE ELECTRICAL PLANS FOR ADDITIONAL INFORMATION.
- WHITE PAINTED 24" TALL LETTERS FOR "DROP OFF A" AND "DROP OFF B" - SEE PLAN
- 4" BLACK PVC COATED CHAIN LINK FENCE - SEE DETAIL 9/C600
- 5' WIDE SWING GATES - SEE DETAIL 10/C600
- ALL NEW IMPROVEMENTS TO BE FLUSH WITH EXISTING IMPROVEMENTS TO REMAIN.
- CONTRACTOR TO INSTALL TEMPORARY SEEDING IN ALL DISTURBED AREAS NOT COVERED BY PAVEMENT UPON COMPLETION OF CONSTRUCTION. CONTRACTOR TO INSTALL PERMANENT SEEDING DURING APPROPRIATE SEEDING SEASON. SEE LANDSCAPE PLANS FOR SEEDING SPECIFICATIONS.

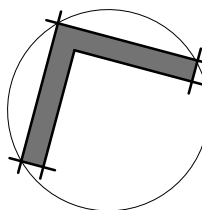


GRAPHIC SCALE



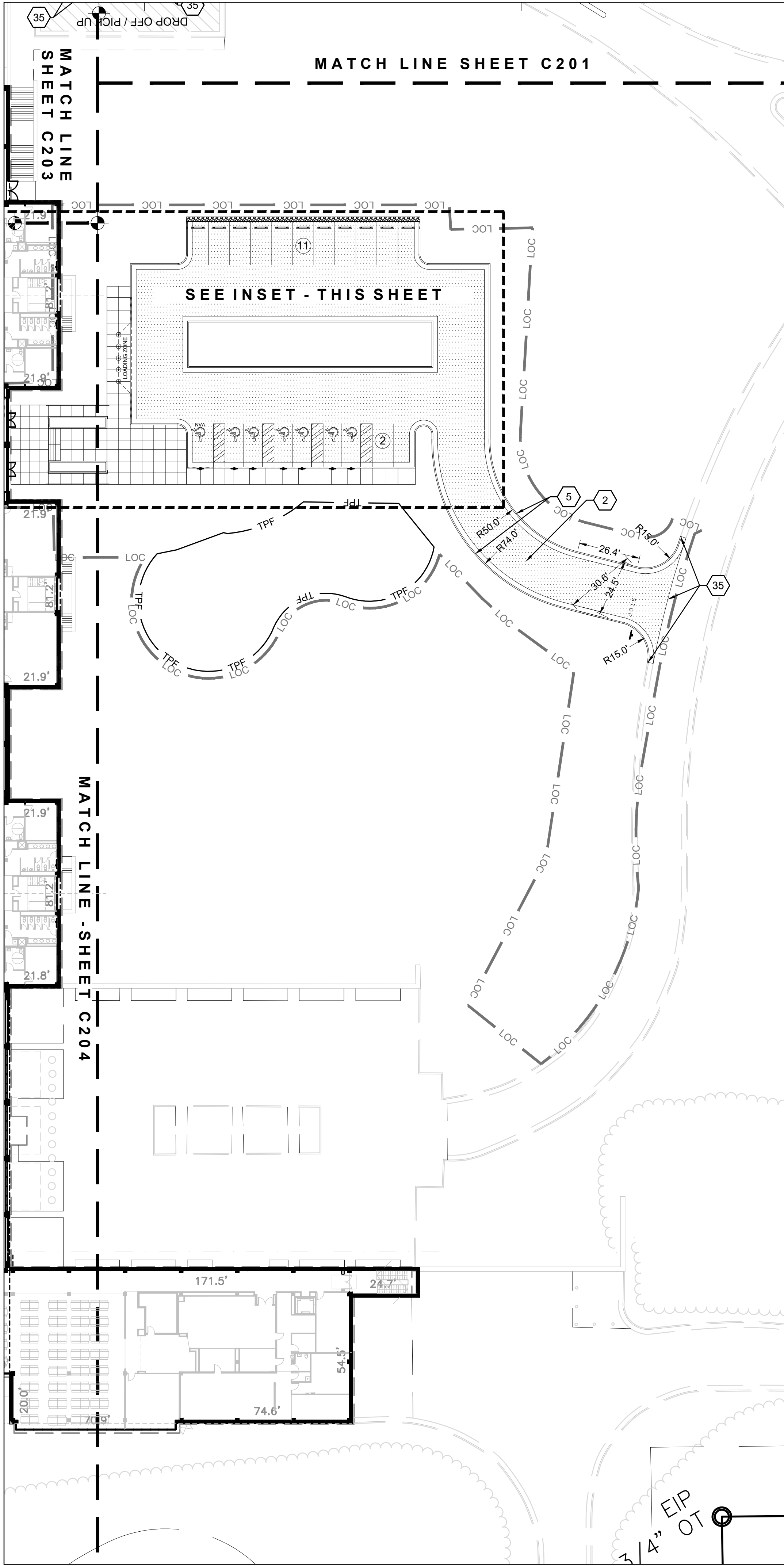
1" = 10'-0"

NORTH



LAYOUT NOTES

- ALL TRAFFIC CONTROL SIGNAGE, DEVICES, AND STRIPING TO CONFORM TO THE MANUAL ON UNIFORM TRAFFIC CONTROL DEVICES (M.U.T.C.D.).
- ALL PAVING CUTS SHALL BE MADE BY SAW CUTS.
- EXISTING ELEVATIONS SHALL BE FIELD VERIFIED AND MATCHED.
- CONTRACTOR TO COORDINATE ANY CHANGES IN FIELD CONDITIONS THAT MAY REVISE THE DESIGN WITH DESIGNER OF RECORD PRIOR TO PROCEEDING.
- ALL DIMENSIONS ARE TO FACE OF CURB OR TO FINISHED FACE OF BUILDING UNLESS NOTED OTHERWISE.
- ALL RADII ON CURBS SHALL BE 5'-0" UNLESS NOTED OTHERWISE.
- ALL ACCESSIBLE PARKING SPACES SHALL DISPLAY APPROVED RESERVED PARKING SPACE SIGNAGE AS PRESCRIBED BY THE AMERICANS WITH DISABILITIES ACT (ADA), M.U.T.C.D., AND ANY ADDITIONAL STATE AND/OR LOCAL REQUIREMENTS. HEIGHT FROM FINISHED GRADE TO BOTTOM OF SIGN IN ANY LOCATION SHALL BE 84" MINIMUM.
- ALL WORK WITHIN THE RIGHT OF WAY OF ALL ROADS AND HIGHWAYS SHALL BE IN ACCORDANCE WITH THE STANDARDS AND SPECIFICATIONS OF THE APPROPRIATE STATE AND/OR LOCAL JURISDICTION. CONTRACTOR SHALL SECURE ALL NECESSARY DRIVEWAY AND ENCROACHMENT PERMITS PRIOR TO CONSTRUCTION. IF NECESSARY, CONTRACTOR SHALL PROVIDE TRAFFIC CONTROL DURING CONSTRUCTION WITHIN THE RIGHT OF WAY, PER WORK AREA TRAFFIC CONTROL HANDBOOK (W.A.T.C.H.) STANDARDS.
- A MINIMUM OF 18" IS TO BE MAINTAINED BETWEEN ALL GRADES / SURFACES AND TOPS OF FOOTINGS.
- SEE SHEETS C201-C204 FOR DIMENSIONING AND MATERIAL REFERENCE DESIGNATIONS.

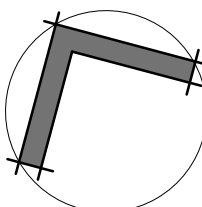


GRAPHIC SCALE



1" = 30'-0"

NORTH

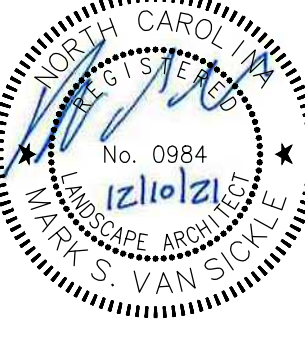
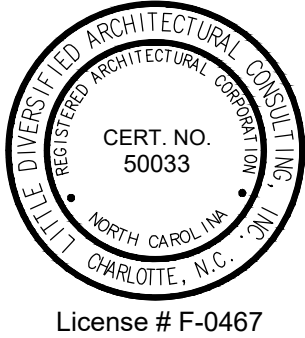


CAUTION!!!

THE LOCATIONS AND ELEVATIONS OF EXISTING UNDERGROUND UTILITIES AS SHOWN ON THIS DRAWING ARE ONLY APPROXIMATE. NO GUARANTEE IS EITHER EXPRESS OR IMPLIED AS TO THE COMPLETENESS OF ACCURACY THEREOF. THE CONTRACTOR SHALL BE EXCLUSIVELY RESPONSIBLE FOR DETERMINING THE EXACT UTILITY LOCATIONS AND ELEVATIONS PRIOR TO THE START OF CONSTRUCTION.

FRANKLIN CHARTER

14111 CAPITAL BLVD.
U.S. HWY 1
WAKE FOREST, NC 27587



CONSTRUCTION DOCUMENTS

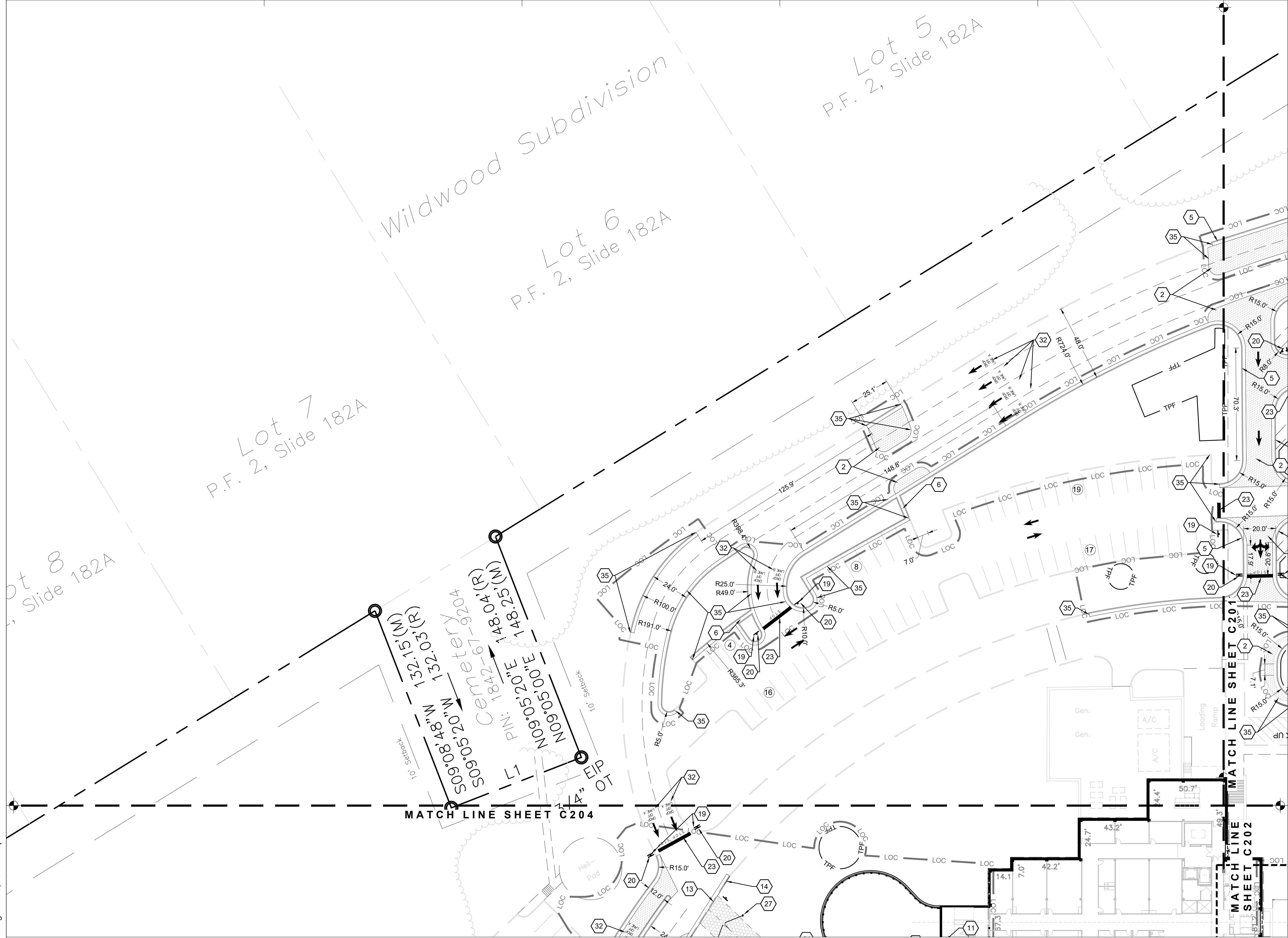
REVISION	DATE

Issue Date:	December 10, 2021
Job Number:	101.16469.00
Drawn By:	AW, SG, JB, EF, EJ & MVS
Checked By:	DP, EF & MVS

LAYOUT AND MATERIALS PLAN

C 202

W:\Consulting Specialties\Land Planning\1011646900 American Leadership\4 CD\CD.00-LAYOUT AND MATERIALS PLAN.dwg Dec 9, 2021 4:10pm



LAYOUT NOTES

- ALL TRAFFIC CONTROL SIGNAGE, DEVICES, AND STRIPING TO CONFORM TO THE MANUAL ON UNIFORM TRAFFIC CONTROL DEVICES (M.U.T.C.D.).
- ALL PAVING CUTS SHALL BE MADE BY SAW CUTS.
- EXISTING ELEVATIONS SHALL BE FIELD VERIFIED AND MATCHED.
- CONTRACTOR TO COORDINATE ANY CHANGES IN FIELD CONDITIONS THAT MAY REVISE THE DESIGN WITH DESIGNER OF RECORD PRIOR TO PROCEEDING.
- ALL DIMENSIONS ARE TO FACE OF CURB OR TO FINISHED FACE OF BUILDING UNLESS NOTED OTHERWISE.
- ALL RADII ON CURBS SHALL BE 5'-0" UNLESS NOTED OTHERWISE.
- ALL ACCESSIBLE PARKING SPACES SHALL DISPLAY APPROVED RESERVED PARKING SPACE SIGNAGE AS PRESCRIBED BY THE AMERICANS WITH DISABILITIES ACT (ADA), M.U.T.C.D., AND ANY ADDITIONAL STATE AND/OR LOCAL REQUIREMENTS. HEIGHT FROM FINISHED GRADE TO BOTTOM OF SIGN IN ANY LOCATION SHALL BE 84" MINIMUM.
- ALL WORK WITHIN THE RIGHT OF WAY OF ALL ROADS AND HIGHWAYS SHALL BE IN ACCORDANCE WITH THE STANDARDS AND SPECIFICATIONS OF THE APPROPRIATE STATE AND/OR LOCAL JURISDICTION. CONTRACTOR SHALL SECURE ALL NECESSARY DRIVEWAY AND ENCROACHMENT PERMITS PRIOR TO CONSTRUCTION. IF NECESSARY, CONTRACTOR SHALL PROVIDE TRAFFIC CONTROL DURING CONSTRUCTION WITHIN THE RIGHT OF WAY, PER WORK AREA TRAFFIC CONTROL HANDBOOK (W.A.T.C.H.) STANDARDS.
- A MINIMUM OF 18" IS TO BE MAINTAINED BETWEEN ALL GRADES / SURFACES AND TOPS OF FOOTINGS.
- SEE SHEETS C201-C204 FOR DIMENSIONING AND MATERIAL REFERENCE DESIGNATIONS.

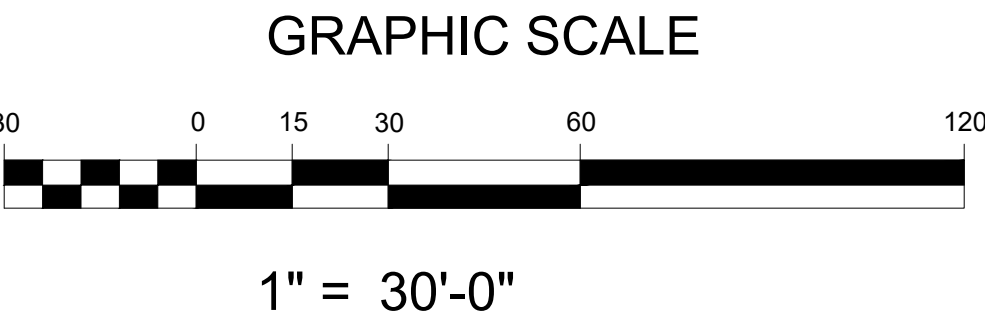
LAYOUT LEGEND

- ALL EXISTING PAVEMENT TO BE CLEANED AND SEAL COATED
- ASPHALT - SEE DETAIL 1/C600
- HEAVY DUTY CONCRETE - SEE DETAIL 2/C6001
- GRASSPAVE - SEE DETAIL 3/C600
- 2'-6" STANDARD CURB AND GUTTER - SEE DETAIL 4/C600
- CONCRETE FLUME - SEE DETAIL 5/C600
- CONCRETE SIDEWALK WITH 1" DEEP HAND TROWEED SCORE JOINTS AS ILLUSTRATED - SEE DETAIL 6/C700
- CONCRETE SIDEWALK TO BE FLUSH WITH ASPHALT PAVEMENT - SEE DETAIL 8/C600
- CONCRETE STAIRS WITH HANDRAILS - SEE DETAIL 10/C600
- ACCESSIBLE RAMP - SEE DETAIL 11/C600
- ACCESSIBLE EGRESS LANDING - SEE DETAIL 12/C600
- DASHED LINE INDICATES FLUSH CURB - SEE DETAIL 8/C600
- 2'-6" MOUNTABLE CURB AND GUTTER - SEE DETAIL 5/C600
- CURB TAPER (11' U.N.O.) - SEE DETAIL 7/C600
- CONCRETE MEDIAN - SEE DETAIL 13/C600
- CAST IN PLACE RETAINING WALL - SEE STRUCTURAL PLANS FOR DETAIL
- MODULAR BLOCK RETAINING WALL - SEE DETAIL 1/C601
- DIRECTION ARROW (TYP.) - SEE DETAIL 9/C600 AND GENERAL NOTE A.
- 30" "STOP" SIGN - MUTCD R1-1
- "DO NOT ENTER" SIGN - MUTCD L29
- "FIRE LANE" SIGN - MUTCD R7-32
- 4" WIDE PAINTED PARKING STRIPES (WHITE)
- 18" WIDE PAINTED STOP BAR (WHITE) WITH 24" TALL PAINTED "STOP"
- 6" WIDE DASHED LANE LINES
- ACCESSIBLE STRIPING AND SIGNAGE - SEE DETAIL 3/C601 AND 7/C601
- GRAVEL SHOULDER - SEE DETAIL 4/C601
- PIPE SWING GATE (SEE PLAN FOR WIDTHS) - SEE DETAIL 5/C601
- GUARD RAIL - SEE DETAIL 6/C601
- BOLLARDS - SEE DETAIL 7/C601
- WHEEL STOPS (13 TOTAL) - SEE DETAIL 8/C601
- LIGHT POLE. SEE ELECTRICAL PLANS FOR PHOTOMETRIC AND LIGHT SPECIFICATIONS - SEE DEMOLITION AND SITE ELECTRICAL PLANS FOR ADDITIONAL INFORMATION.
- WHITE PAINTED 24" TALL LETTERS FOR "DROP OFF A" AND "DROP OFF B" - SEE PLAN
- 4' BLACK PVC COATED CHAIN LINK FENCE - SEE DETAIL 9/C600
- 5' WIDE SWING GATES - SEE DETAIL 10/C600
- ALL NEW IMPROVEMENTS TO BE FLUSH WITH EXISTING IMPROVEMENTS TO REMAIN.
- CONTRACTOR TO INSTALL TEMPORARY SEEDING IN ALL DISTURBED AREAS NOT COVERED BY PAVEMENT UPON COMPLETION OF CONSTRUCTION. CONTRACTOR TO INSTALL PERMANENT SEEDING DURING APPROPRIATE SEEDING SEASON. SEE LANDSCAPE PLANS FOR SEEDING SPECIFICATIONS.

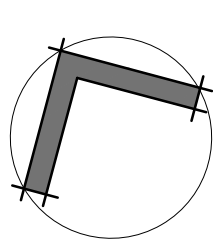


CAUTION!!!

THE LOCATIONS AND ELEVATIONS OF EXISTING UNDERGROUND UTILITIES AS SHOWN ON THIS DRAWING ARE ONLY APPROXIMATE. NO GUARANTEE IS EITHER EXPRESS OR IMPLIED AS TO THE COMPLETENESS OF ACCURACY THEREOF. THE CONTRACTOR SHALL BE EXCLUSIVELY RESPONSIBLE FOR DETERMINING THE EXACT UTILITY LOCATIONS AND ELEVATIONS PRIOR TO THE START OF CONSTRUCTION.



NORTH



9829 Spencer Road
Brighton MI 48114
Main: 877-244-8562
Facsimile: 810-852-4721
www.bccgp.com

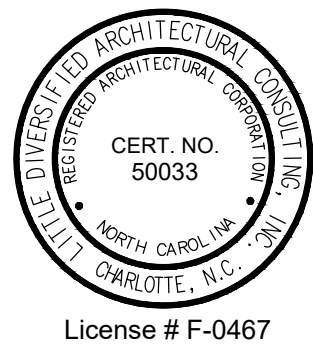


615 South College Street, Suite 1600
Charlotte, NC 28202
T: 704.525.6350

www.littleonline.com

FRANKLIN CHARTER

14111 CAPITAL BLVD.
U.S. HWY 1
WAKE FOREST, NC 27587



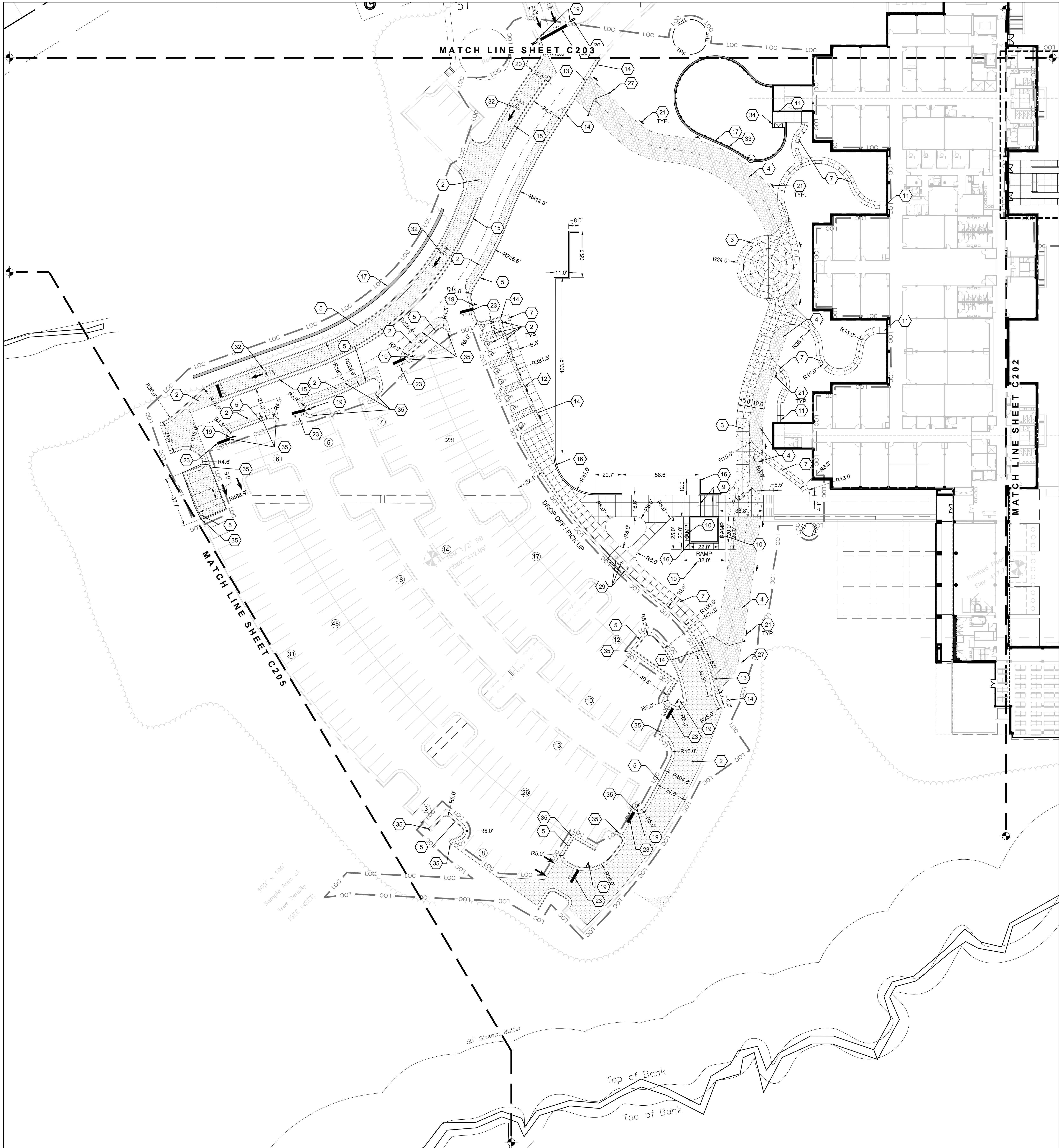
CONSTRUCTION DOCUMENTS

NO.	DESCRIPTION	DATE

Issue Date:	December 10, 2021
Job Number:	101.16469.00
Drawn By:	AW, SG, JB, EF, EJ & MVS
Checked By:	DP, EF & MVS

LAYOUT AND MATERIALS
PLAN

C 203



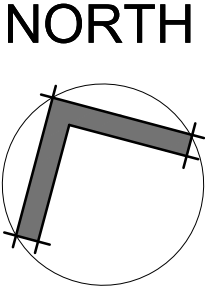
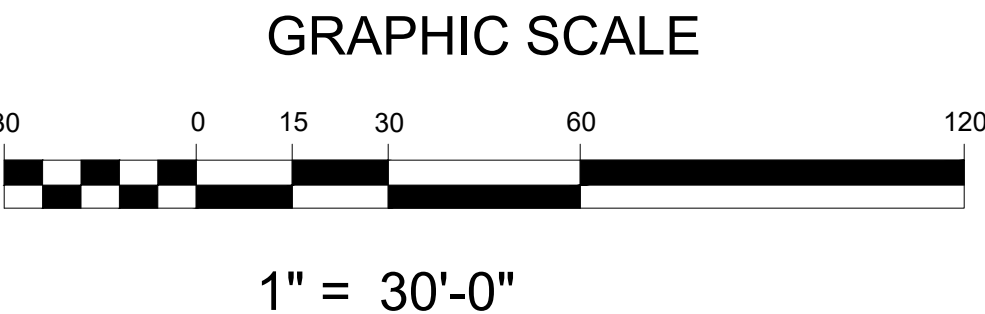
- LAYOUT NOTES**
- A. ALL TRAFFIC CONTROL SIGNAGE, DEVICES, AND STRIPING TO CONFORM TO THE MANUAL ON UNIFORM TRAFFIC CONTROL DEVICES (M.U.T.C.D.).
 - B. ALL PAVING CUTS SHALL BE MADE BY SAW CUTS.
 - C. EXISTING ELEVATIONS SHALL BE FIELD VERIFIED AND MATCHED.
 - D. CONTRACTOR TO COORDINATE ANY CHANGES IN FIELD CONDITIONS THAT MAY REVISE THE DESIGN WITH DESIGNER OF RECORD PRIOR TO PROCEEDING.
 - E. ALL DIMENSIONS ARE TO FACE OF CURB OR TO FINISHED FACE OF BUILDING UNLESS NOTED OTHERWISE.
 - F. ALL RADII ON CURBS SHALL BE 5'-0" UNLESS NOTED OTHERWISE.
 - G. ALL ACCESSIBLE PARKING SPACES SHALL DISPLAY APPROVED RESERVED PARKING SPACE SIGNAGE AS PRESCRIBED BY THE AMERICANS WITH DISABILITIES ACT (ADA), M.U.T.C.D., AND ANY ADDITIONAL STATE AND/OR LOCAL REQUIREMENTS. HEIGHT FROM FINISHED GRADE TO BOTTOM OF SIGN IN ANY LOCATION SHALL BE 84" MINIMUM.
 - H. ALL WORK WITHIN THE RIGHT OF WAY OF ALL ROADS AND HIGHWAYS SHALL BE IN ACCORDANCE WITH THE STANDARDS AND SPECIFICATIONS OF THE APPROPRIATE STATE AND/OR LOCAL JURISDICTION. CONTRACTOR SHALL SECURE ALL NECESSARY DRIVEWAY AND ENCROACHMENT PERMITS PRIOR TO CONSTRUCTION. IF NECESSARY, CONTRACTOR SHALL PROVIDE TRAFFIC CONTROL DURING CONSTRUCTION WITHIN THE RIGHT OF WAY, PER WORK AREA TRAFFIC CONTROL HANDBOOK (W.A.T.C.H.) STANDARDS.
 - I. A MINIMUM OF 18" IS TO BE MAINTAINED BETWEEN ALL GRADES / SURFACES AND TOPS OF FOOTINGS.
 - J. SEE SHEETS C201-C204 FOR DIMENSIONING AND MATERIAL REFERENCE DESIGNATIONS.

- LAYOUT LEGEND**
- 1. ALL EXISTING PAVEMENT TO BE CLEANED AND SEAL COATED
 - 2. ASPHALT - SEE DETAIL 1/C600
 - 3. HEAVY DUTY CONCRETE - SEE DETAIL 2/C6001
 - 4. GRASSPAVE - SEE DETAIL 3/C600
 - 5. 2'-6" STANDARD CURB AND GUTTER - SEE DETAIL 4/C600
 - 6. CONCRETE FLUME - SEE DETAIL 5/C600
 - 7. CONCRETE SIDEWALK WITH 1" DEEP HAND TROWELED SCORE JOINTS AS ILLUSTRATED - SEE DETAIL 6/C700
 - 8. CONCRETE SIDEWALK TO BE FLUSH WITH ASPHALT PAVEMENT - SEE DETAIL 8/C600
 - 9. CONCRETE STAIRS WITH HANDRAILS - SEE DETAIL 10/C600
 - 10. ACCESSIBLE RAMP - SEE DETAIL 11/C600
 - 11. ACCESSIBLE EGRESS LANDING - SEE DETAIL 12/C600
 - 12. DASHED LINE INDICATES FLUSH CURB - SEE DETAIL 8/C600
 - 13. 2'-6" MOUNTABLE CURB AND GUTTER - SEE DETAIL 5/C600
 - 14. CURB TAPER (11' U.N.O.) - SEE DETAIL 7/C600
 - 15. CONCRETE MEDIAN - SEE DETAIL 13/C600
 - 16. CAST IN PLACE RETAINING WALL - SEE STRUCTURAL PLANS FOR DETAIL
 - 17. MODULAR BLOCK RETAINING WALL - SEE DETAIL 1/C601
 - 18. DIRECTION ARROW (TYP.) - SEE DETAIL 9/C600 AND GENERAL NOTE A.
 - 19. 30" "STOP" SIGN - MUTCD R1-1
 - 20. "DO NOT ENTER" SIGN - MUTCD L29
 - 21. "FIRE LANE" SIGN - MUTCD R7-32
 - 22. 4" WIDE PAINTED PARKING STRIPES (WHITE)
 - 23. 18" WIDE PAINTED STOP BAR (WHITE) WITH 24" TALL PAINTED "STOP"
 - 24. 6" WIDE DASHED LANE LINES
 - 25. ACCESSIBLE STRIPING AND SIGNAGE - SEE DETAIL 3/C601 AND 7/C601
 - 26. GRAVEL SHOULDER - SEE DETAIL 4/C601
 - 27. PIPE SWING GATE (SEE PLAN FOR WIDTHS) - SEE DETAIL 5/C601
 - 28. GUARD RAIL - SEE DETAIL 6/C601
 - 29. BOLLARDS - SEE DETAIL 7/C601
 - 30. WHEEL STOPS (13 TOTAL) - SEE DETAIL 8/C601
 - 31. LIGHT POLE. SEE ELECTRICAL PLANS FOR PHOTOMETRIC AND LIGHT SPECIFICATIONS - SEE DEMOLITION AND SITE ELECTRICAL PLANS FOR ADDITIONAL INFORMATION.
 - 32. WHITE PAINTED 24" TALL LETTERS FOR "DROP OFF A" AND "DROP OFF B" - SEE PLAN
 - 33. 4' BLACK PVC COATED CHAIN LINK FENCE - SEE DETAIL 9/C600
 - 34. 5' WIDE SWING GATES - SEE DETAIL 10/C600
 - 35. ALL NEW IMPROVEMENTS TO BE FLUSH WITH EXISTING IMPROVEMENTS TO REMAIN.
 - 36. CONTRACTOR TO INSTALL TEMPORARY SEEDING IN ALL DISTURBED AREAS NOT COVERED BY PAVEMENT UPON COMPLETION OF CONSTRUCTION. CONTRACTOR TO INSTALL PERMANENT SEEDING DURING APPROPRIATE SEEDING SEASON. SEE LANDSCAPE PLANS FOR SEEDING SPECIFICATIONS.



CAUTION!!!

THE LOCATIONS AND ELEVATIONS OF EXISTING UNDERGROUND UTILITIES AS SHOWN ON THIS DRAWING ARE ONLY APPROXIMATE. NO GUARANTEE IS EITHER EXPRESS OR IMPLIED AS TO THE COMPLETENESS OF ACCURACY THEREOF. THE CONTRACTOR SHALL BE EXCLUSIVELY RESPONSIBLE FOR DETERMINING THE EXACT UTILITY LOCATIONS AND ELEVATIONS PRIOR TO THE START OF CONSTRUCTION.



REVISION	DATE

Issue Date:	December 10, 2021
Job Number:	101.16469.00
Drawn By:	AW, SG, JB, EF, EJ & MVS
Checked By:	DP, EF & MVS