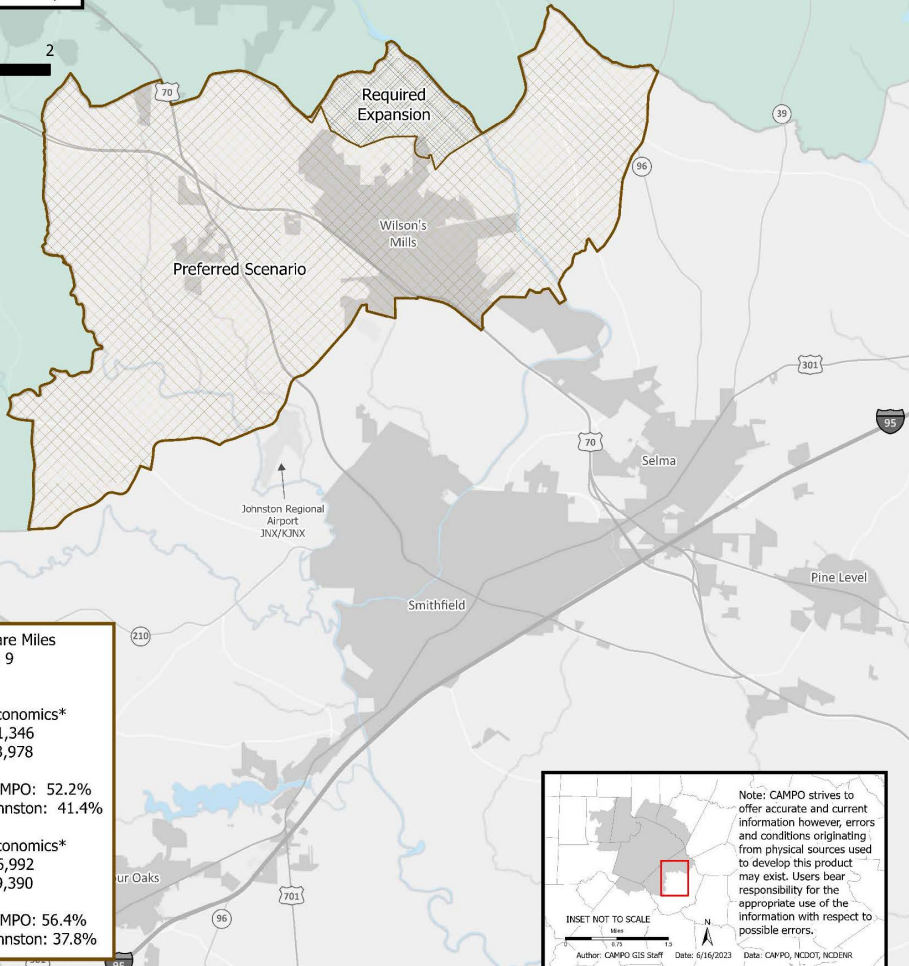


**Capital Area MPO:
Proposed Boundary
Expansion (2023)
Johnston Scenarios**



Proposed Expansion
 CAMPO Planning Area
 County Boundary
 Municipal Boundary



Area: 36 Square Miles
Block Groups: 9
TAZs: 24

2020 Socio-Economics*
 Population: 11,346
 Households: 3,978
 Jobs: 2,918
 % Trips to CAMPO: 52.2%
 % Trips to Johnston: 41.4%

2050 Socio-Economics*
 Population: 26,992
 Households: 9,390
 Jobs: 4,216
 % Trips to CAMPO: 56.4%
 % Trips to Johnston: 37.8%

Note: CAMPO strives to offer accurate and current information however, errors and conditions originating from physical sources used to develop this product may exist. Users bear responsibility for the appropriate use of the information with respect to possible errors.

INSET NOT TO SCALE

 Author: CAMPO GIS Staff Date: 6/16/2023 Data: CAMPO, NCDOT, NCDENR

*CommunityViz Forecast Data: Adopted 2050 MTP (1/2022)
 % Trips by Vehicle / Johnston Trips to Non-MPO portion of county