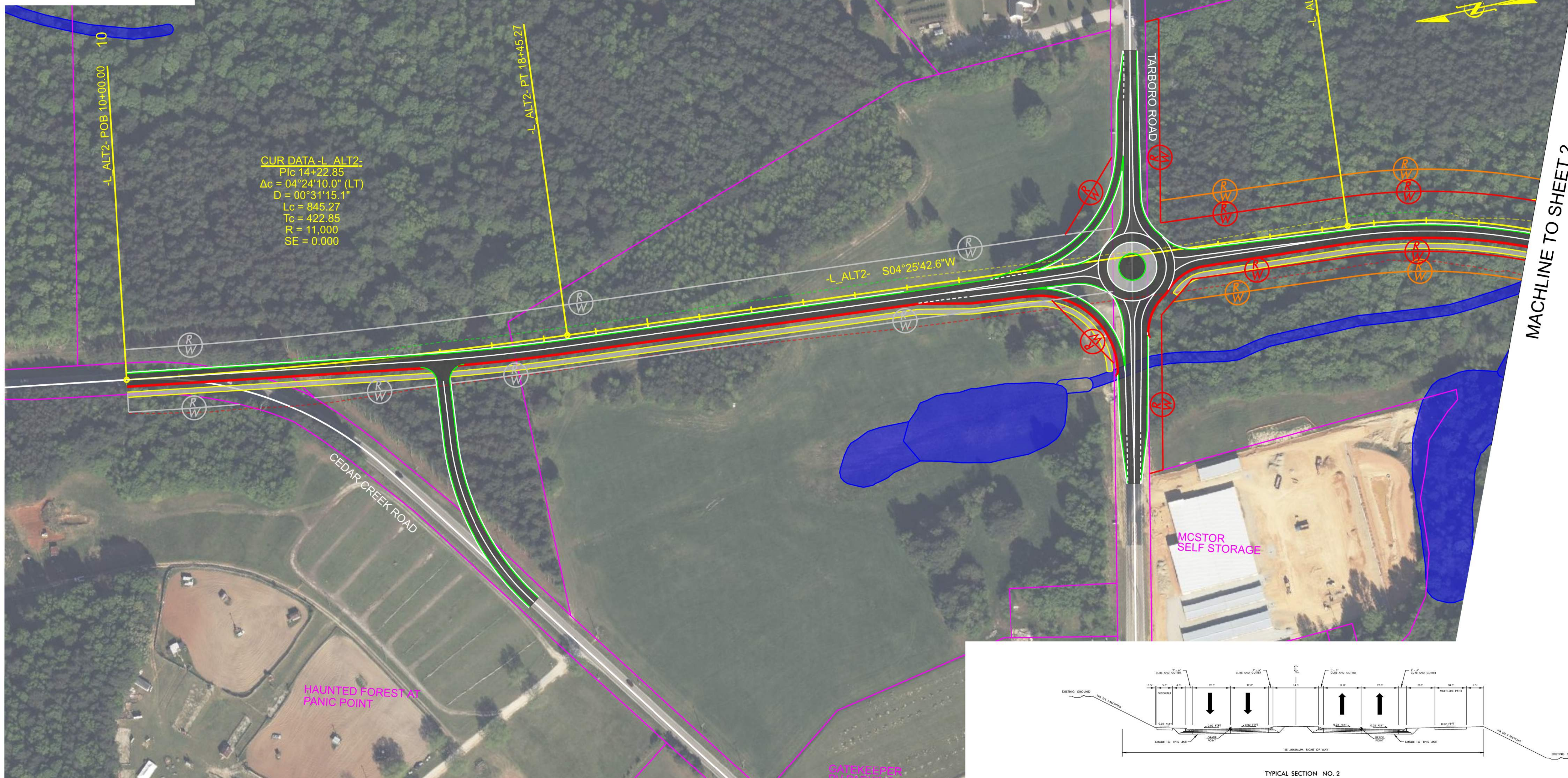


PROJECT REFERENCE	SHEET NO.
NC 96 BYPASS	BYP ALTI
FEASIBILITY STUDY	

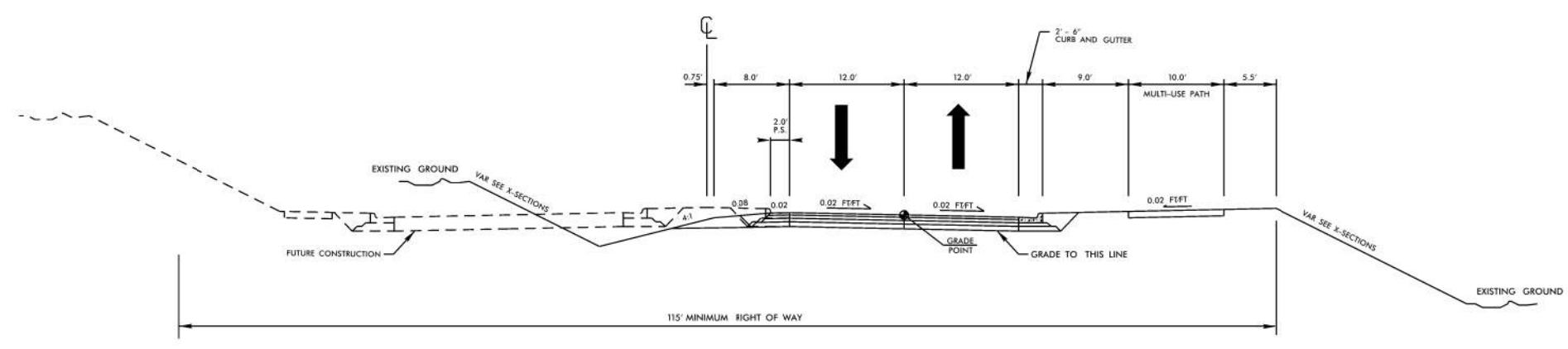
# NC 96 YOUNGSVILLE BYPASS FEASIBILITY STUDY PROPOSED ALIGNMENT ROUNDABOUT 1 FROM CEDAR CREEK ROAD TO NC 96



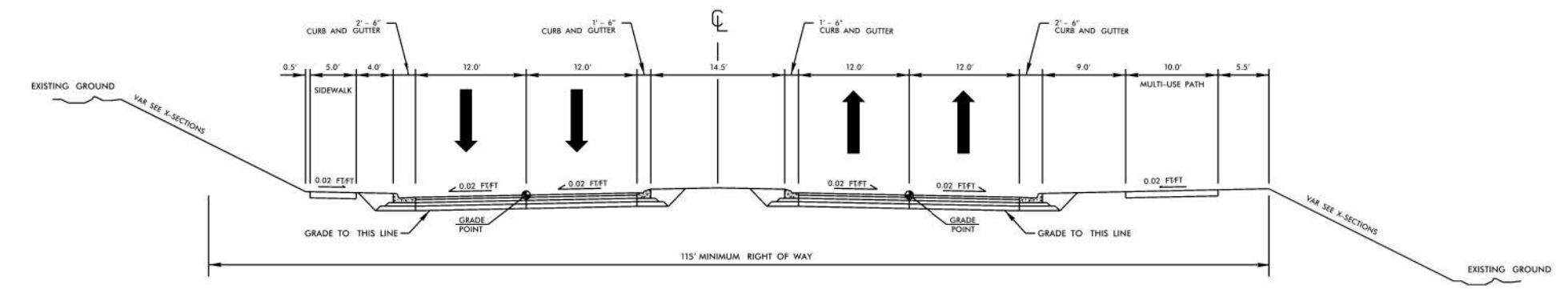
**CUR DATA -L ALT2-**  
 P/c = 14+22.85  
 $\Delta c = 04^{\circ}24'10.0''$  (LT)  
 D = 00°31'15.1"  
 Lc = 845.27  
 Tc = 422.85  
 R = 11,000  
 SE = 0.000

MACHINE TO SHEET 2

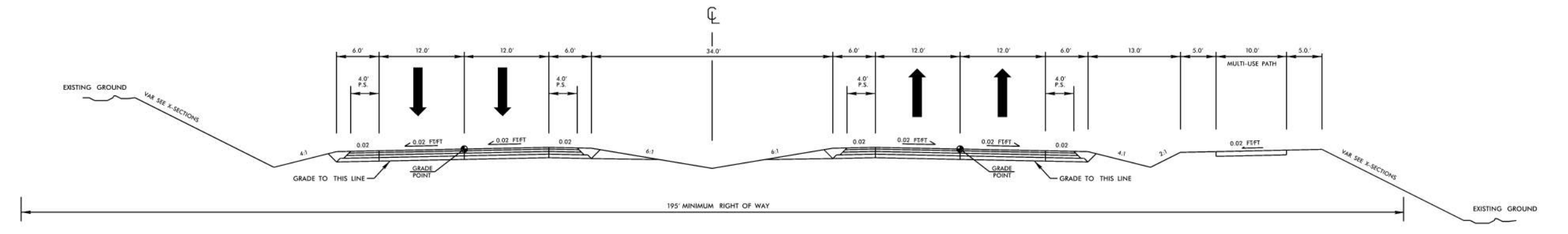
- LEGEND**
- SLOPE STAKES (FILL)
  - SLOPE STAKES (CUT)
  - (W) 115' MINIMUM RIGHT OF WAY - ALTERNATIVE 1
  - (W) 195' MINIMUM RIGHT OF WAY - ALTERNATIVE 2
  - (W) 120' EXISTING DEDICATED RIGHT OF WAY
  - PROPERTY LINE
  - CONCRETE SIDEWALK
  - WETLANDS



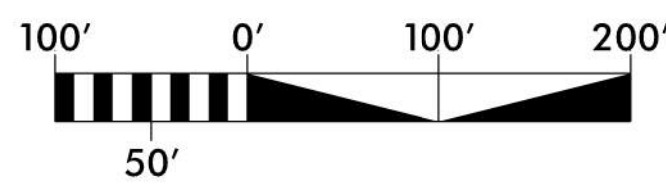
TYPICAL SECTION NO. 1  
INTERIM CONDITION: PARTIAL BUILD



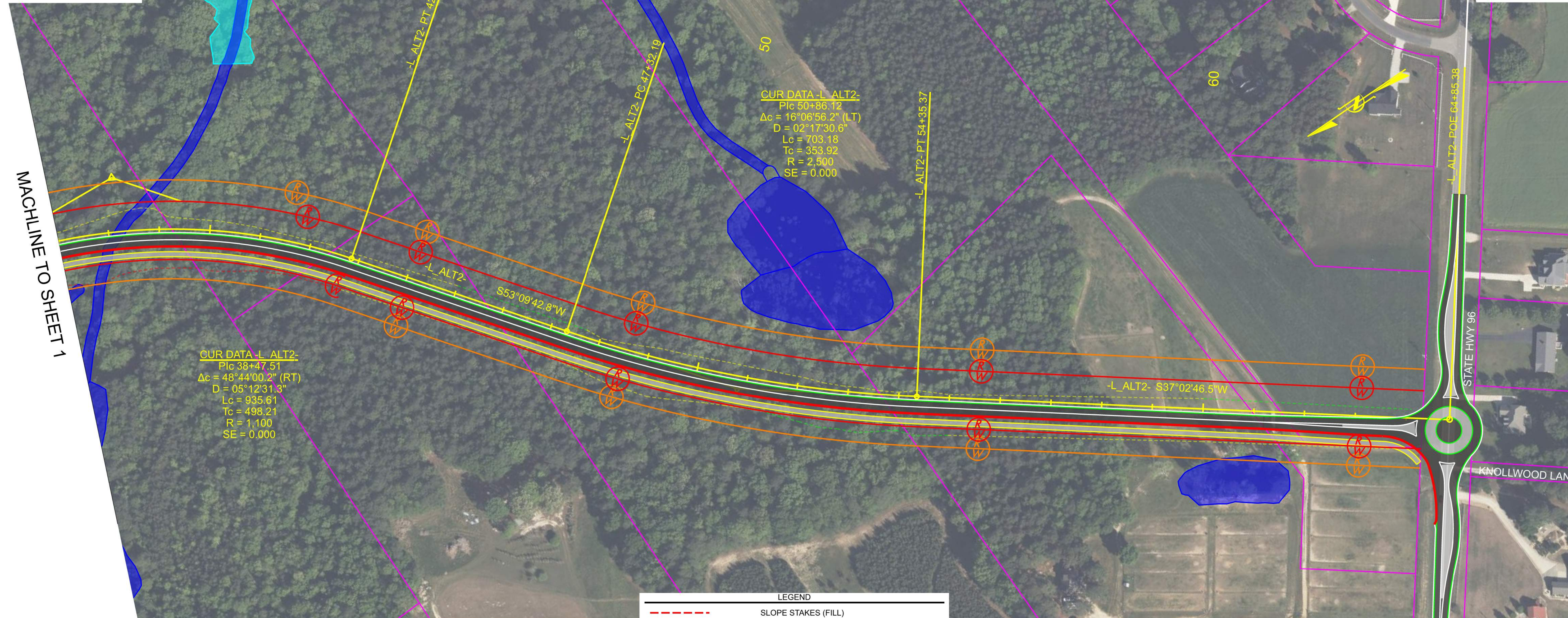
TYPICAL SECTION NO. 2  
ULTIMATE CROSS SECTION: ALTERNATIVE 1  
"TYPICAL" HIGHWAY CROSS SECTIONS FOR USE IN SPOT ONLINE: TYPICAL SECTION NO. 4L



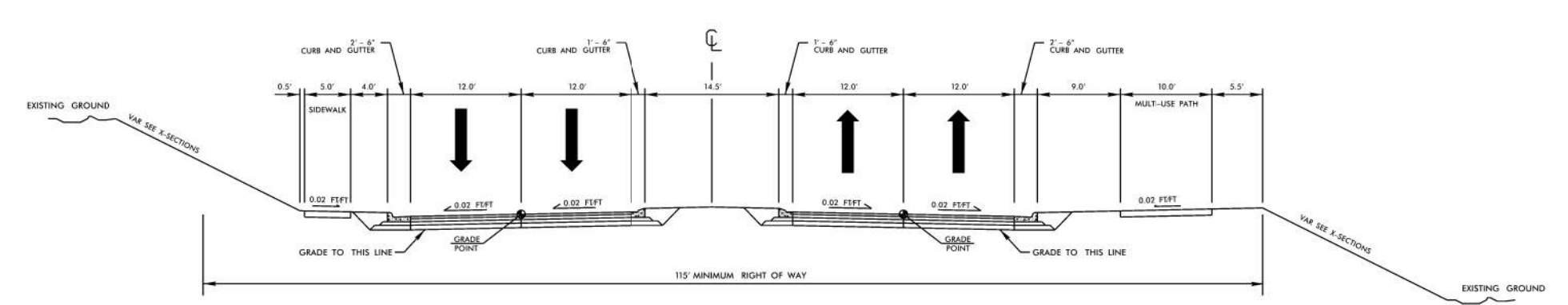
TYPICAL SECTION NO. 3  
ULTIMATE CROSS SECTION: ALTERNATIVE 2  
"TYPICAL" HIGHWAY CROSS SECTIONS FOR USE IN SPOT ONLINE: TYPICAL SECTION NO. 4H



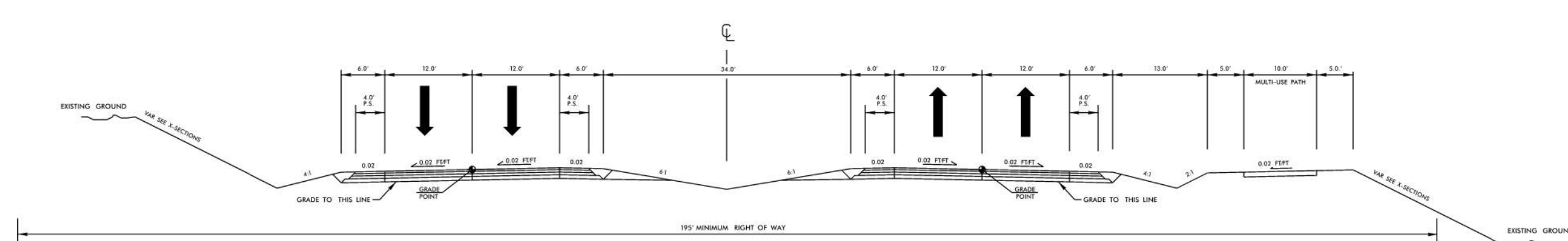
# NC 96 YOUNGSVILLE BYPASS FEASIBILITY STUDY PROPOSED ALIGNMENT ROUNDABOUT 1 FROM CEDAR CREEK ROAD TO NC 96



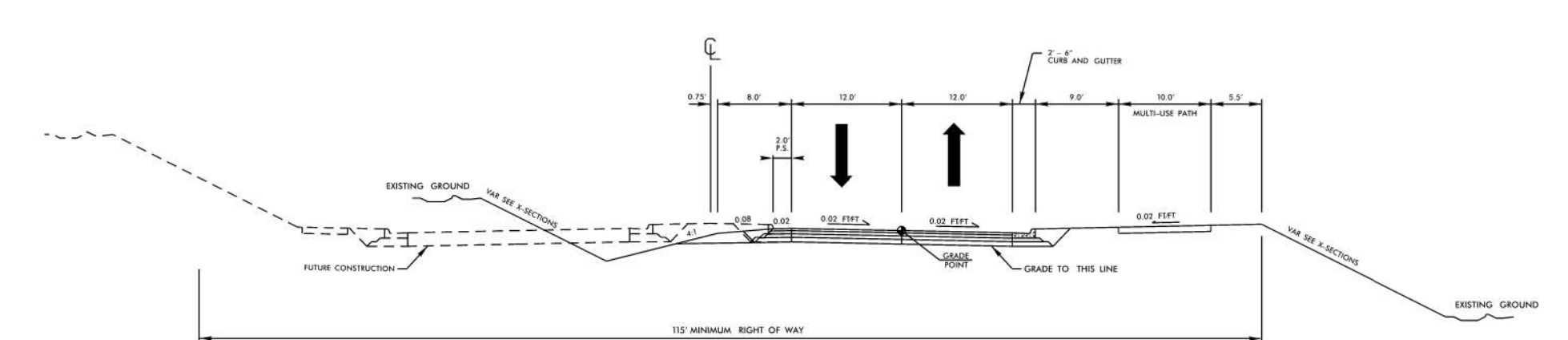
LEGEND	
	SLOPE STAKES (FILL)
	SLOPE STAKES (CUT)
	115' MINIMUM RIGHT OF WAY - ALTERNATIVE 1
	195' MINIMUM RIGHT OF WAY - ALTERNATIVE 2
	120' EXISTING DEDICATED RIGHT OF WAY
	PROPERTY LINE
	CONCRETE SIDEWALK
	WETLANDS
	FLOOD ZONE



TYPICAL SECTION NO. 2  
ULTIMATE CROSS SECTION: ALTERNATIVE 1  
"TYPICAL" HIGHWAY CROSS SECTIONS FOR USE IN SPOT ONLINE: TYPICAL SECTION NO. 4L



TYPICAL SECTION NO. 3  
ULTIMATE CROSS SECTION: ALTERNATIVE 2  
"TYPICAL" HIGHWAY CROSS SECTIONS FOR USE IN SPOT ONLINE: TYPICAL SECTION NO. 4H



TYPICAL SECTION NO. 1  
INTERIM CONDITION: PARTIAL BUILD

MOUNTAIN REFINED  
EQUESTRIAN CENTER