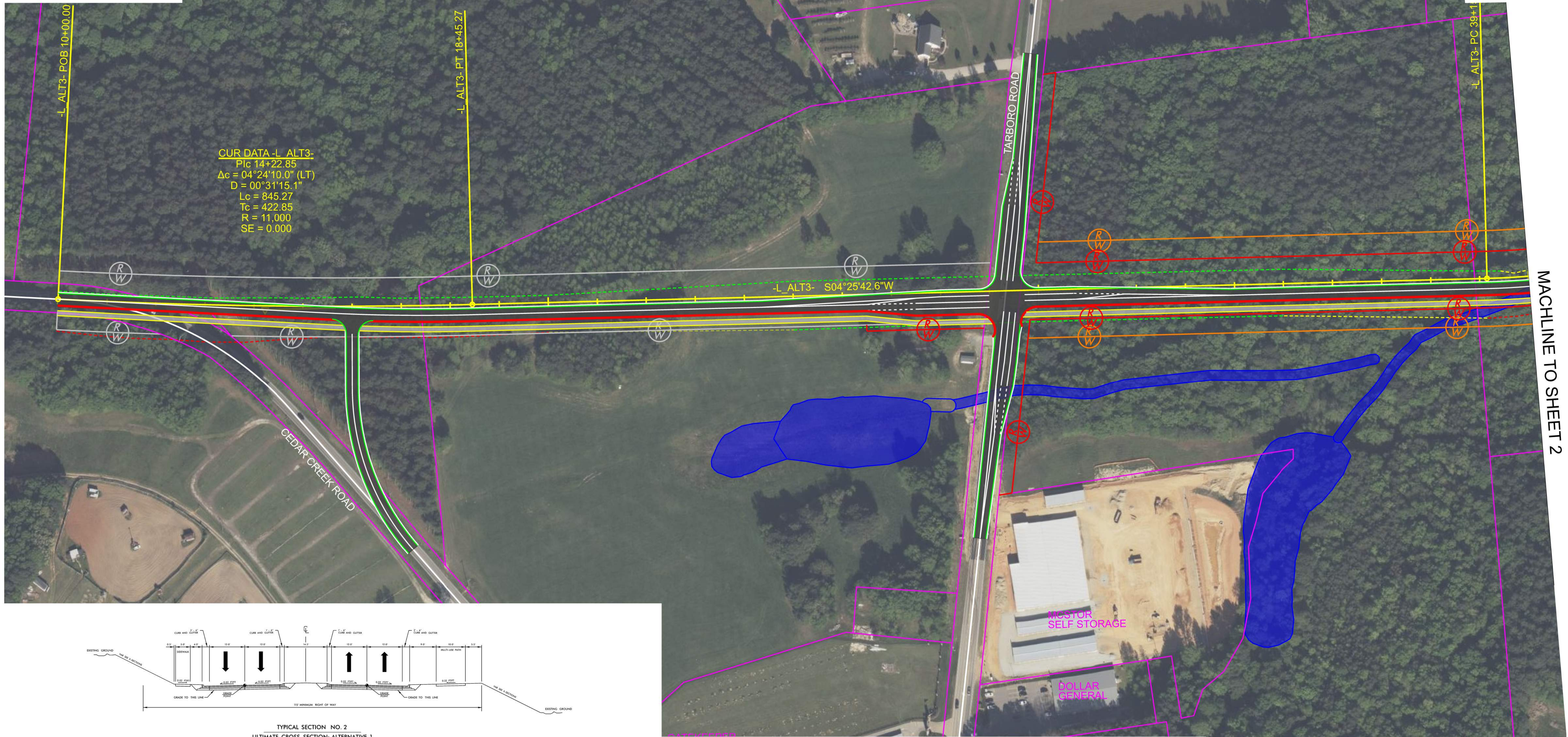


PROJECT REFERENCE	SHEET NO.
NC 96 BYPASS	BYP ALT 3-1
FEASIBILITY STUDY	

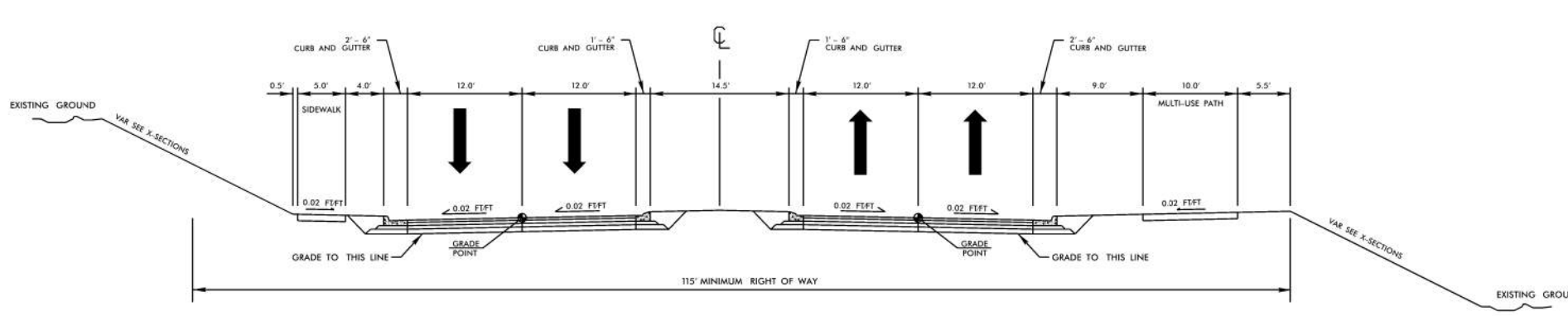
NC 96 YOUNGSVILLE BYPASS FEASIBILITY STUDY PROPOSED ALIGNMENT ALTERNATIVE 3 FROM CEDAR CREEK ROAD TO NC 96



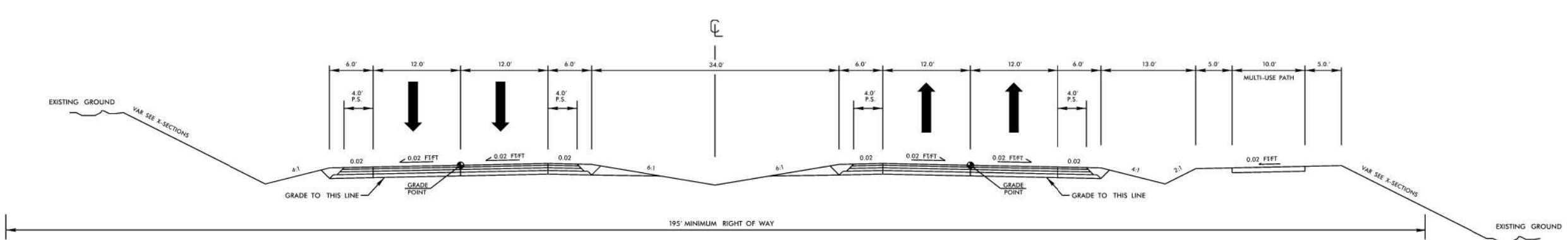
CUR DATA -L ALT3-
 P/c 14+22.85
 $\Delta c = 04^{\circ}24'10.0''$ (LT)
 $D = 00^{\circ}31'15.1''$
 $L_c = 845.27$
 $T_c = 422.85$
 $R = 11,000$
 $SE = 0.000$

-L ALT3- S04°25'42.6"W

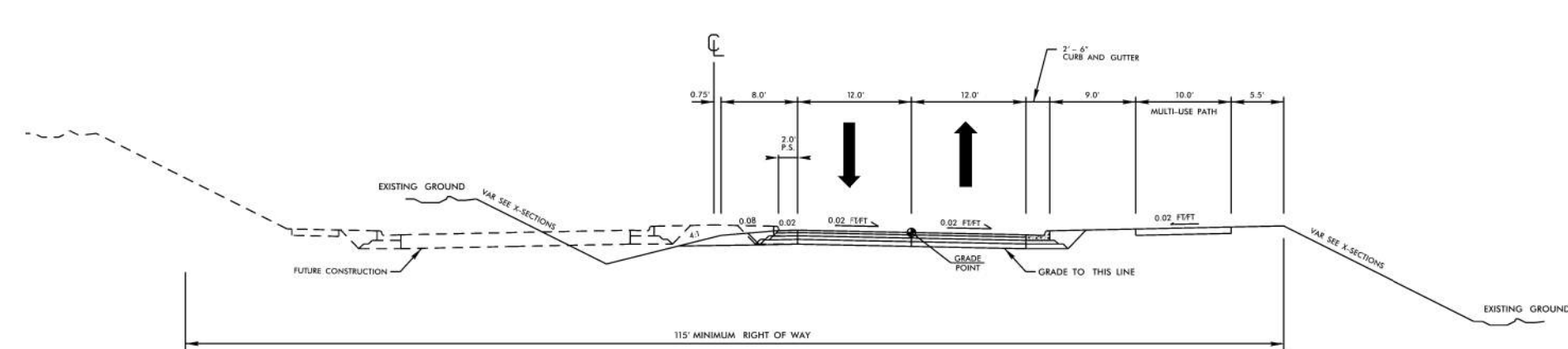
MACHINE TO SHEET 2



TYPICAL SECTION NO. 2
 ULTIMATE CROSS SECTION: ALTERNATIVE 1
 "TYPICAL" HIGHWAY CROSS SECTIONS FOR USE IN SPOT ONLINE: TYPICAL SECTION NO. 4L

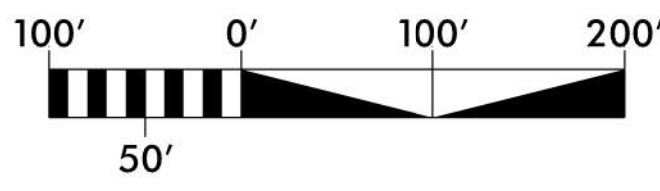


TYPICAL SECTION NO. 3
 ULTIMATE CROSS SECTION: ALTERNATIVE 2
 "TYPICAL" HIGHWAY CROSS SECTIONS FOR USE IN SPOT ONLINE: TYPICAL SECTION NO. 4H

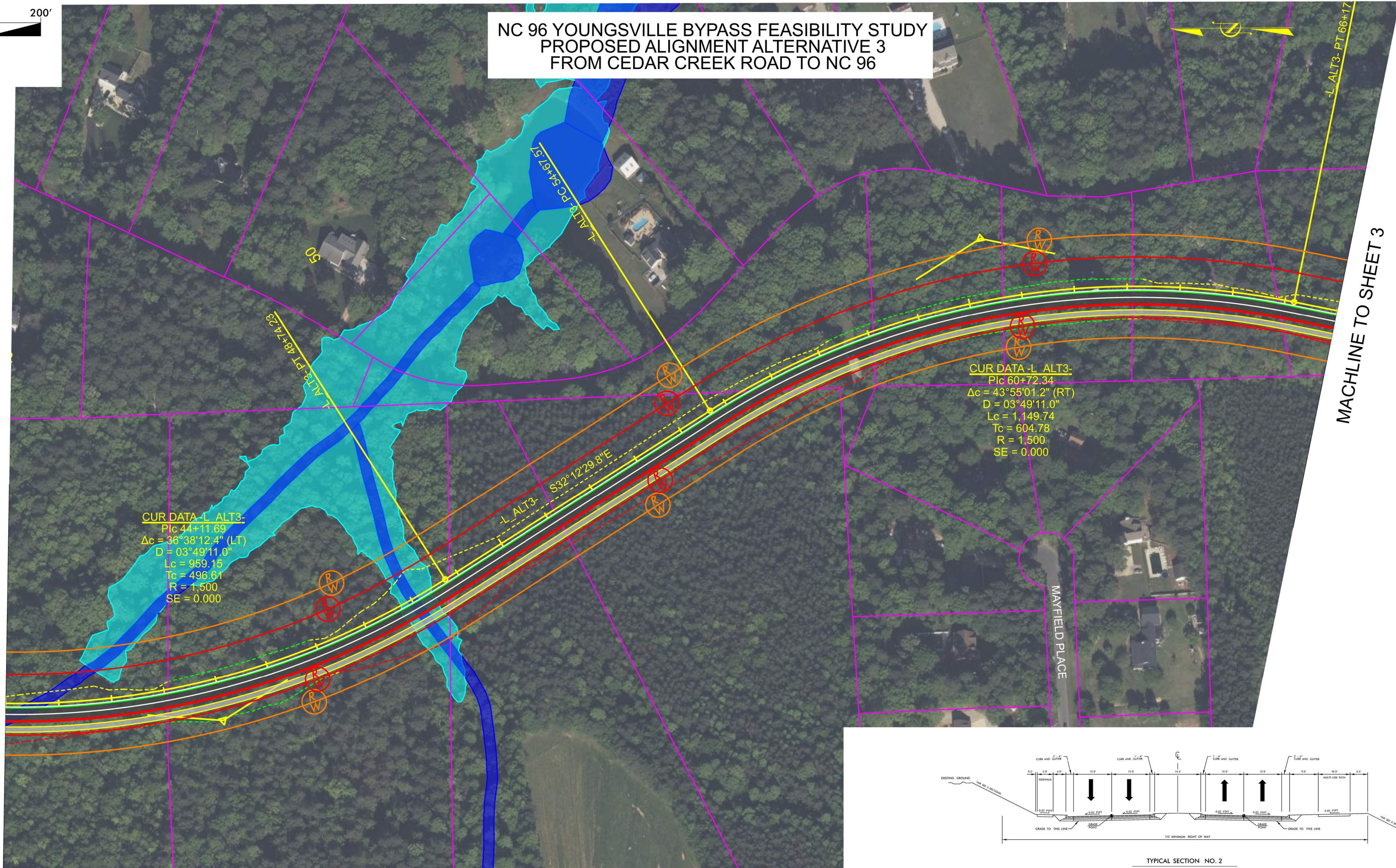


TYPICAL SECTION NO. 1
 INTERIM CONDITION: PARTIAL BUILD

LEGEND	
	SLOPE STAKES (FILL)
	SLOPE STAKES (CUT)
	115' MINIMUM RIGHT OF WAY - ALTERNATIVE 1
	195' MINIMUM RIGHT OF WAY - ALTERNATIVE 2
	120' EXISTING DEDICATED RIGHT OF WAY
	PROPERTY LINE
	CONCRETE SIDEWALK
	WETLANDS



NC 96 YOUNGSVILLE BYPASS FEASIBILITY STUDY PROPOSED ALIGNMENT ALTERNATIVE 3 FROM CEDAR CREEK ROAD TO NC 96



CUR DATA - L. ALT3-
 P/c 44+11.69
 $\Delta c = 36^{\circ}38'12.4"$ (LT)
 $D = 03^{\circ}49'11.0"$
 $Lc = 959.15$
 $Tc = 496.61$
 $R = 1,500$
 $SE = 0.000$

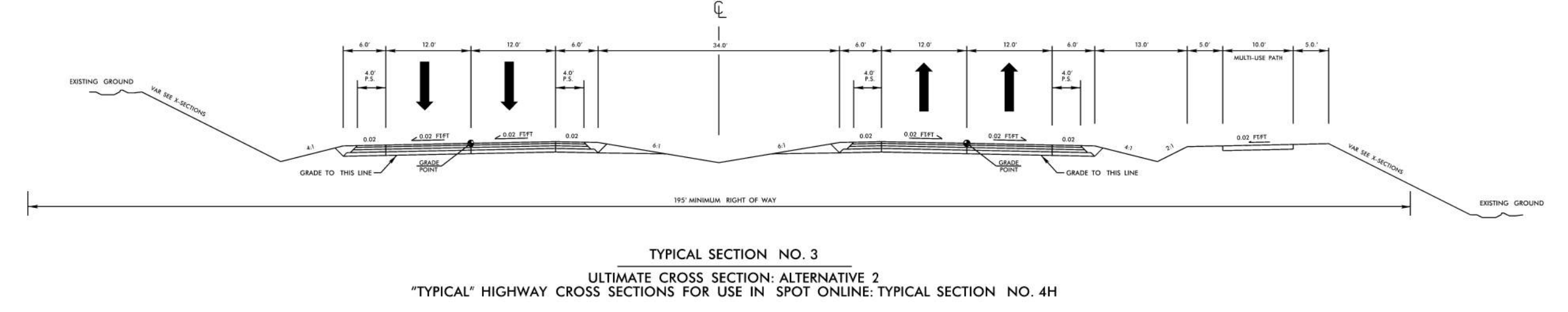
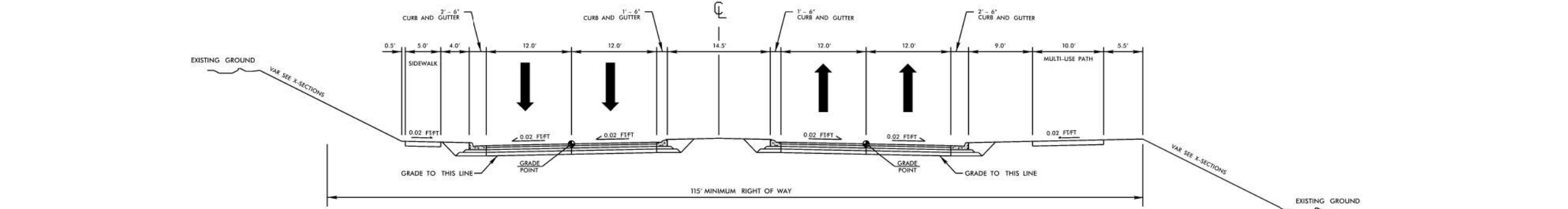
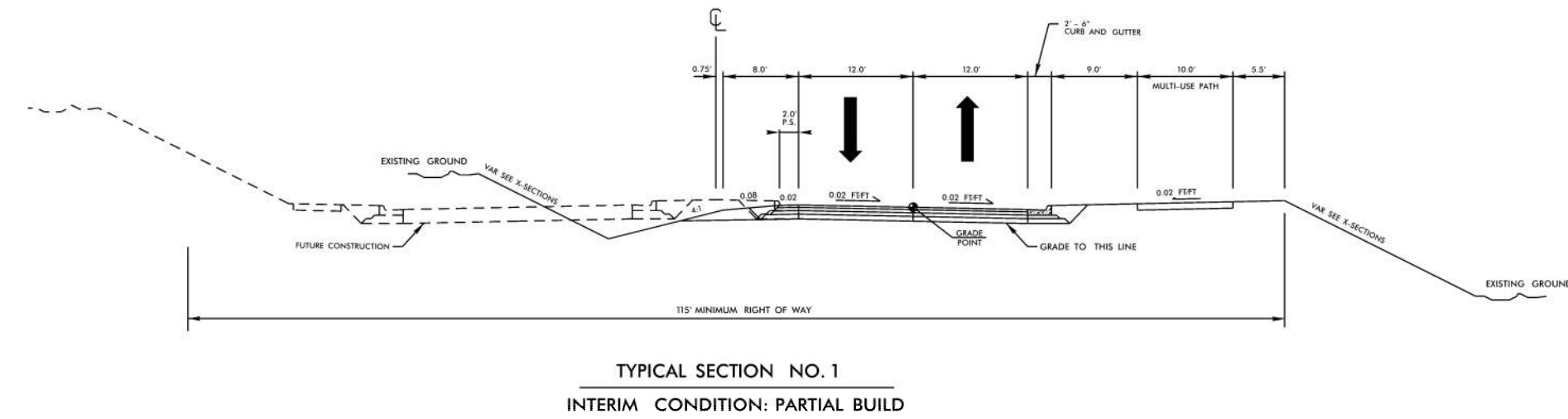
CUR DATA - L. ALT3-
 P/c 60+72.34
 $\Delta c = 43^{\circ}55'01.2"$ (RT)
 $D = 03^{\circ}49'11.0"$
 $Lc = 1,149.74$
 $Tc = 604.78$
 $R = 1,500$
 $SE = 0.000$

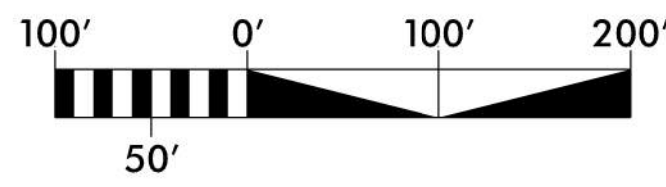
L. ALT3- S32°12'29.8"E

MACHINE TO SHEET 1

MACHINE TO SHEET 3

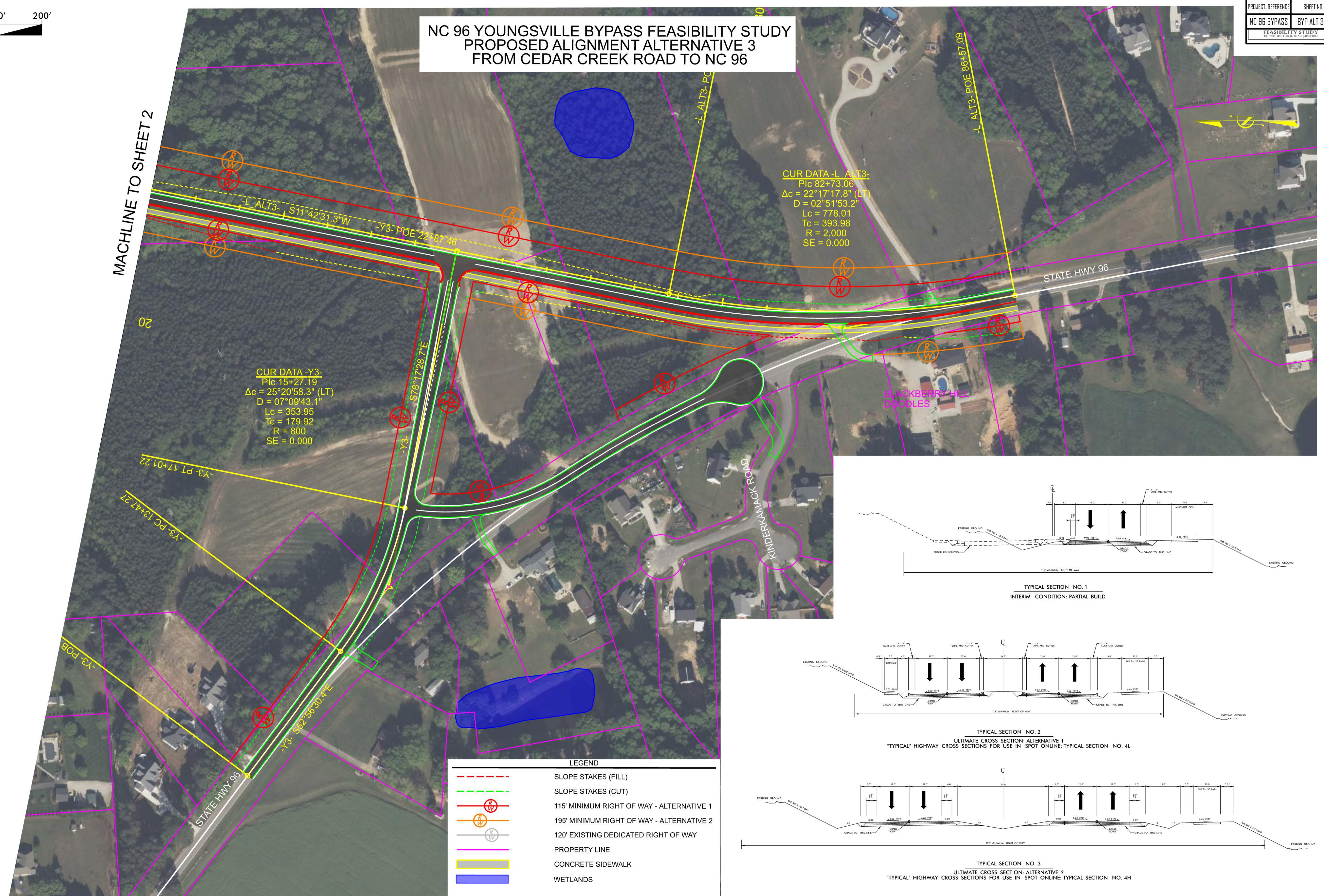
- LEGEND**
- SLOPE STAKES (FILL)
 - SLOPE STAKES (CUT)
 - (R/W) 115' MINIMUM RIGHT OF WAY - ALTERNATIVE 1
 - (R/W) 195' MINIMUM RIGHT OF WAY - ALTERNATIVE 2
 - (R/W) 120' EXISTING DEDICATED RIGHT OF WAY
 - PROPERTY LINE
 - CONCRETE SIDEWALK
 - WETLANDS
 - FLOOD ZONE





PROJECT REFERENCE	SHEET NO.
NC 96 BYPASS	BYP ALT 3-3
FEASIBILITY STUDY	

NC 96 YOUNGSVILLE BYPASS FEASIBILITY STUDY PROPOSED ALIGNMENT ALTERNATIVE 3 FROM CEDAR CREEK ROAD TO NC 96

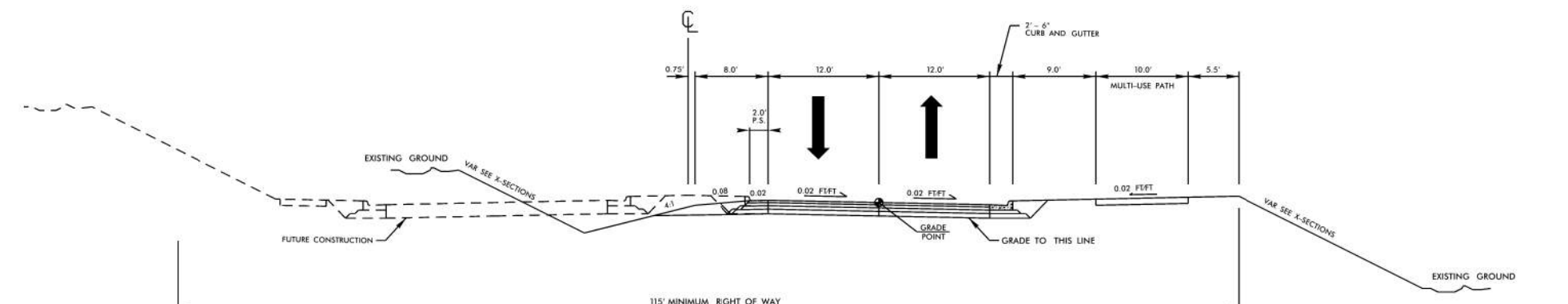


MACHINE TO SHEET 2

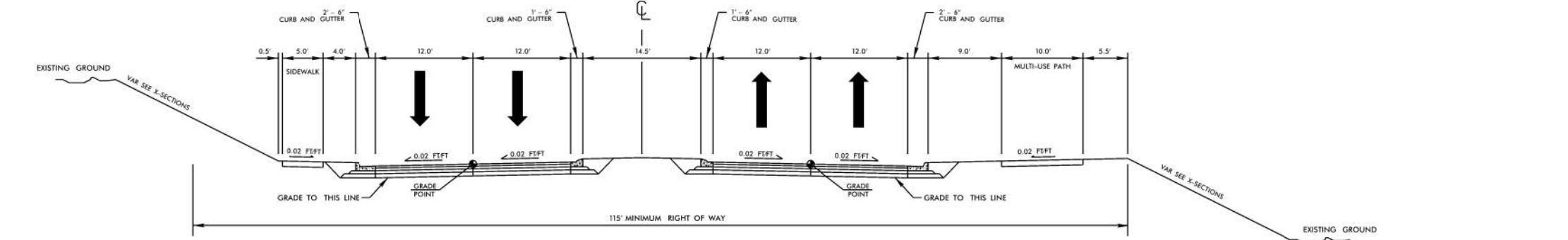
CUR DATA -Y3-
 Plc 15+27.19
 $\Delta c = 25^\circ 20' 58.3''$ (LT)
 $D = 07^\circ 09' 43.1''$
 $Lc = 353.95$
 $Tc = 179.92$
 $R = 800$
 $SE = 0.000$

CUR DATA -L ALT3-
 Plc 82+73.06
 $\Delta c = 22^\circ 17' 17.8''$ (LT)
 $D = 02^\circ 51' 53.2''$
 $Lc = 778.01$
 $Tc = 393.98$
 $R = 2,000$
 $SE = 0.000$

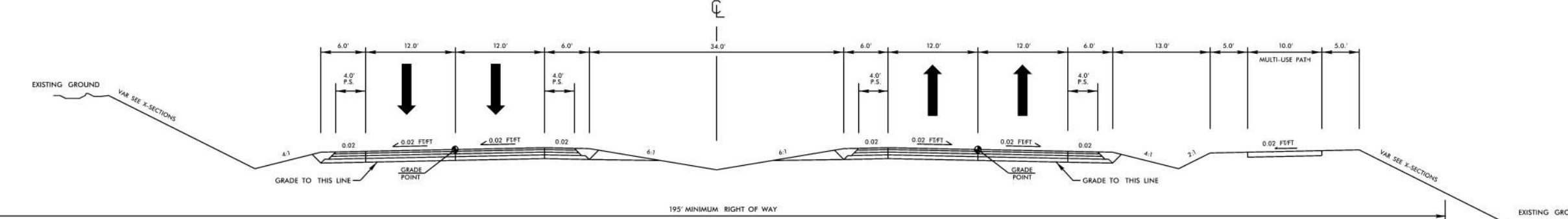
LEGEND	
	SLOPE STAKES (FILL)
	SLOPE STAKES (CUT)
	115' MINIMUM RIGHT OF WAY - ALTERNATIVE 1
	195' MINIMUM RIGHT OF WAY - ALTERNATIVE 2
	120' EXISTING DEDICATED RIGHT OF WAY
	PROPERTY LINE
	CONCRETE SIDEWALK
	WETLANDS



TYPICAL SECTION NO. 1
INTERIM CONDITION: PARTIAL BUILD



TYPICAL SECTION NO. 2
ULTIMATE CROSS SECTION: ALTERNATIVE 1
"TYPICAL" HIGHWAY CROSS SECTIONS FOR USE IN SPOT ONLINE: TYPICAL SECTION NO. 4L



TYPICAL SECTION NO. 3
ULTIMATE CROSS SECTION: ALTERNATIVE 2
"TYPICAL" HIGHWAY CROSS SECTIONS FOR USE IN SPOT ONLINE: TYPICAL SECTION NO. 4H