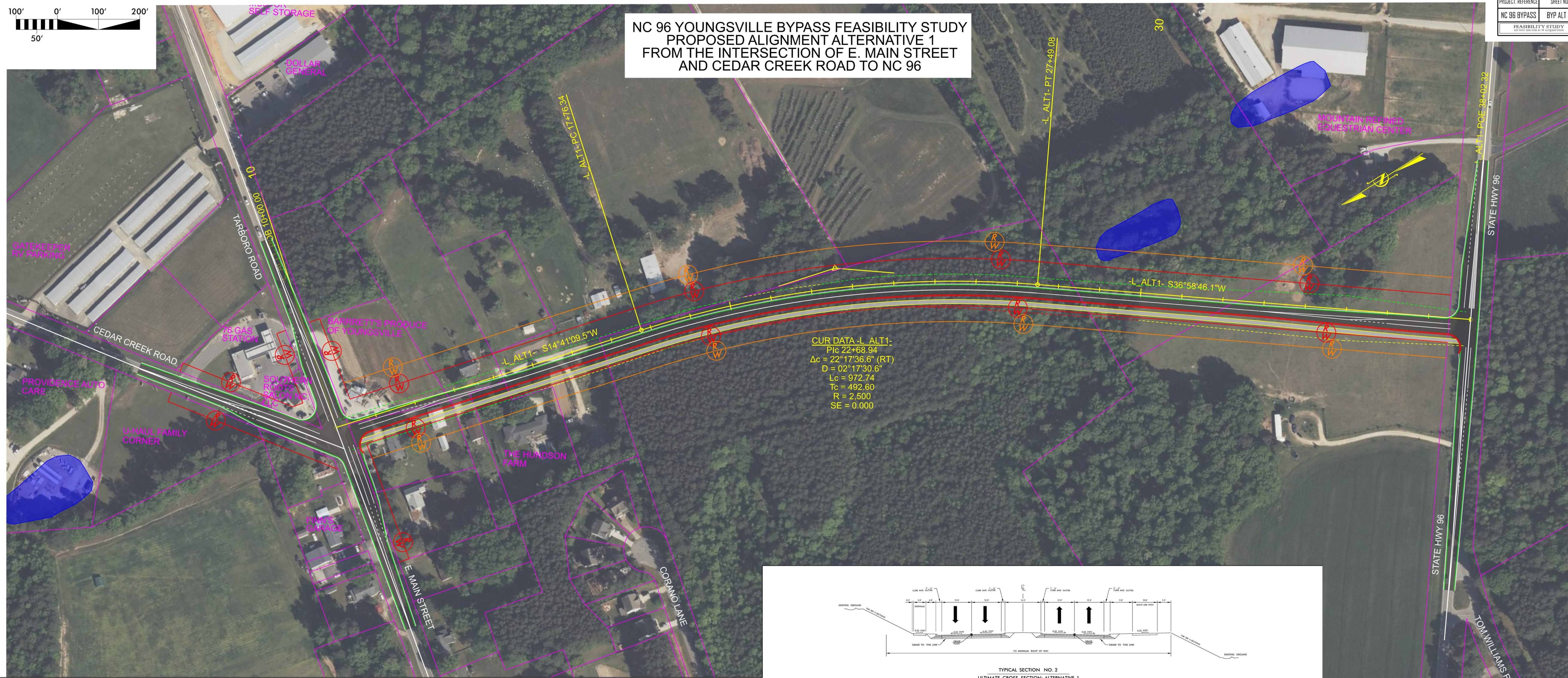
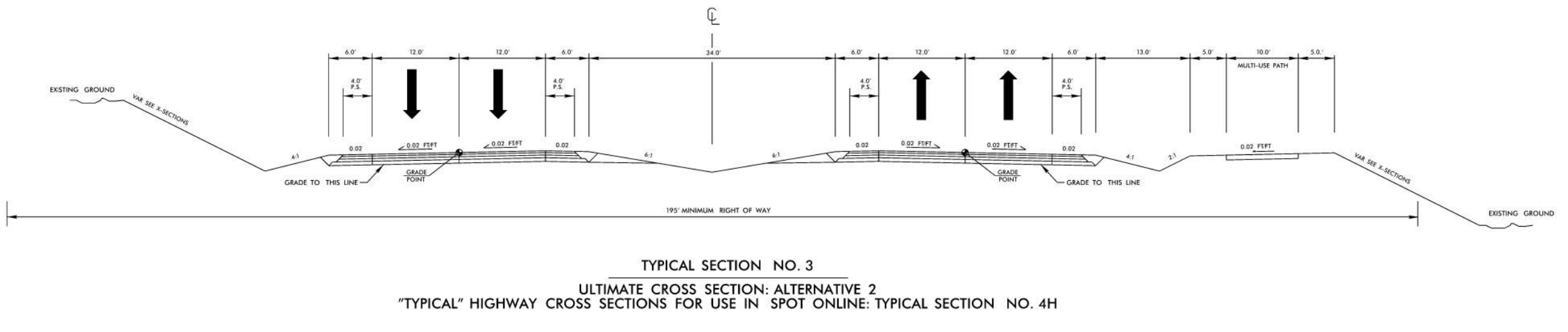
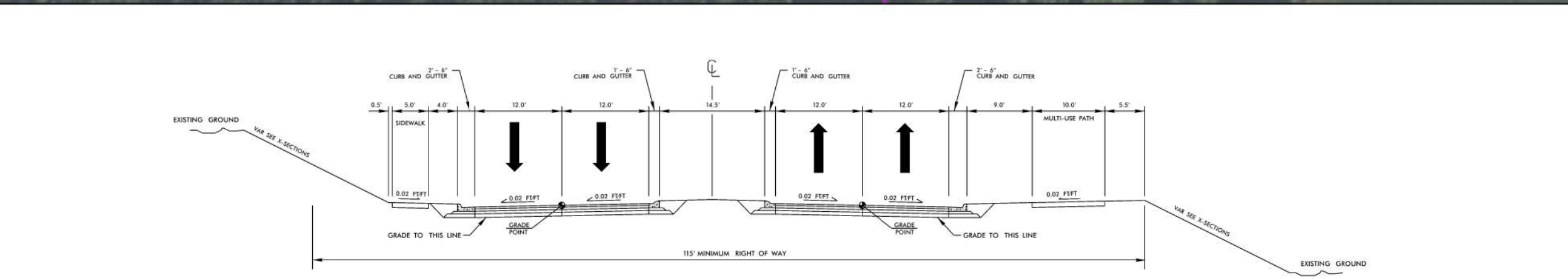
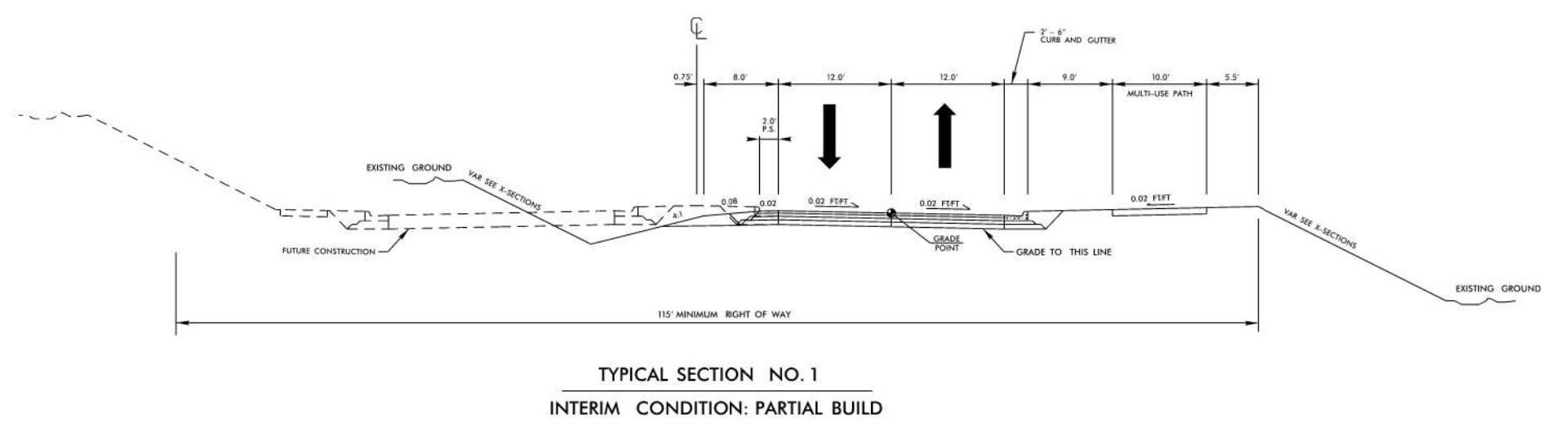


**NC 96 YOUNGVILLE BYPASS FEASIBILITY STUDY
PROPOSED ALIGNMENT ALTERNATIVE 1
FROM THE INTERSECTION OF E. MAIN STREET
AND CEDAR CREEK ROAD TO NC 96**



CUR DATA - L. ALT1:
 P/c = 22+68.94
 $\Delta c = 22^\circ 17' 36.6''$ (RT)
 $D = 02^\circ 17' 30.6''$
 $Lc = 972.74$
 $Tc = 492.60$
 $R = 2,500$
 $SE = 0.000$

- LEGEND**
- SLOPE STAKES (FILL)
 - SLOPE STAKES (CUT)
 - 115' MINIMUM RIGHT OF WAY - ALTERNATIVE 1
 - 195' MINIMUM RIGHT OF WAY - ALTERNATIVE 2
 - PROPERTY LINE
 - CONCRETE SIDEWALK
 - WETLANDS



BARRETT'S AUTO SALES