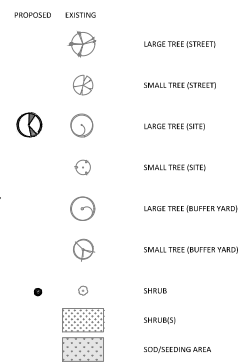
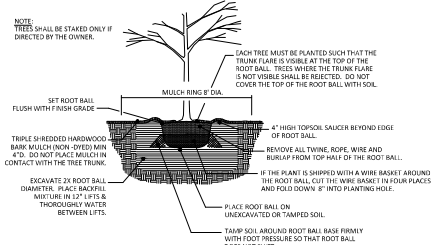


Vegetation Legend:



Planting Notes:

- SHRUB AND TREE SPECIES SHALL BE SELECTED FROM THE TOWN OF YOUNGSVILLE APPROVED PLANTING MATERIAL LIST ONLY. ALL SPECIES AND SOURCES SHALL HAVE WRITTEN OWNER APPROVAL PRIOR TO ORDERING AND PLACEMENT ON SITE.
- CONCRETE TREES MUST BE A MINIMUM OF TWO (2) INCHES IN CALIPER, MEASURED SIX (6) INCHES ABOVE GRADE, WHEN PLANTED.
- UNDERSTORY TREES MUST BE A MINIMUM OF ONE AND ONE HALF (1.5) INCHES IN CALIPER MEASURED SIX (6) INCHES ABOVE GRADE AT THE TIME OF INSTALLATION.
- ALL SHRUBS APPROVED FOR LANDSCAPING OF VEHICULAR AREAS, LOADING AND UNLOADING AREAS, AND OUTSIDE STORAGE AREAS SHALL BE EVERGREEN, WITH A MINIMUM SIZE OF EIGHTEEN (18) INCHES SPREAD OR HEIGHT, WHEN INSTALLED AND REACH A MINIMUM HEIGHT OF THIRTY-SIX (36) INCHES AND A MINIMUM SPREAD OF THIRTY (30) INCHES. SUCH SHRUBS SHALL BE PLANTED USING REQUIRED PLANTING TECHNIQUES AND LOCATED PARALLEL TO THE EDGE OF PARKING LOTS, ACCESS DRIVES, LOADING AND UNLOADING AREAS, AND OUTSIDE STORAGE AREAS. REQUIRED SHRUBS IN OTHER LOCATIONS, OUTSIDE OF THE AREAS LISTED ABOVE, MAY BE EVERGREEN OR DECIDUOUS AND SHALL BE THREE (3) GALLON SIZE AS PER AMERICAN NATIONAL STANDARDS INSTITUTE (ANSI) STANDARDS AT THE TIME OF INSTALLATION.
- THE FOLLOWING SOIL PREPARATION TECHNIQUES SHALL BE USED FOR ALL REQUIRED LANDSCAPE AREAS:
 - SOIL PREPARATION FOR THE ENTIRE LANDSCAPE YARD INCLUDES THE ADDITION OF ORGANIC AMENDMENTS TILLED TO A DEPTH OF EIGHT (8) TO TWELVE (12) INCHES.
 - ALL PLANTINGS IN LANDSCAPE YARDS SHALL BE MULCHED, INCLUDING INTERIOR PARKING LOT ISLANDS LESS THAN FIVE HUNDRED (500) SQUARE FEET, TO A DEPTH OF THREE TO FOUR (3-4) INCHES. THE MULCH SHALL BE FREE OF TRASH AND MAINTAINED WEE FREE THEREAFTER.
 - EARTHEN BASINS ARE TO BE CONSTRUCTED AROUND THE INSTALLED PLANTS.
 - FOR ESTABLISHMENT AND SURVIVAL, PLANTS SHALL BE WATERED BY THE LANDOWNER OR CONTRACTOR FOR THE FIRST YEAR AFTER PLANTING.



LARGE AND SMALL TREE PLANTING

Concrete Notes:

- CONCRETE PAVEMENT DRIVEWAYS AND PARKING SHALL HAVE CONTROL JOINTS SAW CUT NO GREATER THAN 10' O.C.
- SLAB EXPANSION JOINTS SHALL BE PROVIDED WHERE A SLAB MEETS A BUILDING, WHERE A SLAB MEETS ANOTHER SLAB, AND WHERE A SLAB WITH A CAST-IN-PLACE DRAIN MEETS SLABS WITHOUT DRAINS.
- SIDEWALKS SHALL HAVE CONTROL JOINTS TOOK-IN AT INTERVALS NO GREATER THAN 5' O.C.
- WHERE A SIDEWALK IS ADJACENT TO A HEADER CURB, CURB AND SIDEWALK MAY BE POURED MONOLITHIC OR SEPARATE WITH SEALED EXPANSION JOINT.

PHASE I&II NOTE

- PHASE LINE SHOWN APPLIES TO SITEWORK GRADING, DRAINAGE AND EROSION CONTROL AND DOES NOT APPLY TO VERTICAL BUILDING CONSTRUCTION. UPON COMPLETION OF STABILIZATION OF DRAINAGE AREAS (PHASE I GRADING AND DRAINAGE PLAN) UPSTREAM OF THE PROPOSED TEMPORARY STORMWATER MANAGEMENT SYSTEM SHOWN ON C.2.0 (S&B-1) AND INSTALLATION OF THE PHASE 2 BUILDING PADS, ALL VERTICAL BUILDING CONSTRUCTION MAY BE COMPLETED SIMULTANEOUSLY (SEE EROSION CONTROL SEQUENCE ITEM S1 on sheet C2.0). SITE CONTRACTOR IS RECOMMENDED TO REFER FROM COMPLETION OF FINAL ASPHALT SURFACE COURSE IN PHASE I AND PHASE 2 UNTIL VERTICAL CONSTRUCTION IS COMPLETED OR AS NECESSARY TO MITIGATE CONSTRUCTION DAMAGE TO FINISH SURFACES. PHASE I EROSION CONTROL DEVICES INCLUDING TRAFFIC CONES MARKING PHASE 1 TRINCH DRAIN INLET PROTECTION SHALL REMAIN IN PLACE UNTIL ASPHALT SURFACE COURSE COMPLETION OF BOTH PHASES. SEE DETAILS SHEET C4.

VUA (Vehicular Use Area) Calculations:

1. EXISTING VUA =	61,974 SF
2. ADDITIONAL VUA =	20,811 SF
FINAL VUA =	82,785 SF (33% INCREASE)

VUA LANDSCAPING
1 DECIDUOUS TREE AND 4 SHRUBS PER 1500 SF
20,811 SF / 1500 SF = 13.87 = 14. THEREFORE 14 TREES AND 56 SHRUBS ARE REQUIRED SATISFY VUA LANDSCAPING.

1	APPROVED	APPROVED	APPROVED
2	APPROVED	APPROVED	APPROVED
3	APPROVED	APPROVED	APPROVED
4	APPROVED	APPROVED	APPROVED
5	APPROVED	APPROVED	APPROVED
6	APPROVED	APPROVED	APPROVED
7	APPROVED	APPROVED	APPROVED
8	APPROVED	APPROVED	APPROVED
9	APPROVED	APPROVED	APPROVED
10	APPROVED	APPROVED	APPROVED



SITE PLAN AND REQUIRED VEGETATION PLAN
YOUNGSVILLE STORAGE EXPANSION
PARK AVENUE
Town of Youngsville, Franklin County, North Carolina



Project Manager:	BCF
Drawn By:	RIL
Checked By:	BCF
Project Number:	23099
Drawing Number:	D-1549

C2.0
Date: April 06, 2025

