



**US HIGHWAY 1
(CAPITAL BLVD.)**

BURLINGTON MILLS ROAD

URIAL DRIVE

STATION 318+80 -L- 16
STATION 319+40
ACCESS ALLOWED

STATION 318+80 -L- 16
STATION 319+40
ACCESS ALLOWED

100' SPECIAL
HIGHWAY OVERLAY
DISTRICT BUILDING
SETBACK

50' AVERAGE SPECIAL HIGHWAY
OVERLAY DISTRICT LANDSCAPE BUFFER

30' SIDE BUILDING
SETBACK AND AVERAGE SPECIAL
HIGHWAY OVERLAY
DISTRICT LANDSCAPE
BUFFER

EXISTING ENTRANCES TO
BE CLOSED

50' TYPE AA LANDSCAPE BUFFER

10' SIDE BUILDING SETBACK

10' SIDE BUILDING SETBACK

10' SIDE BUILDING SETBACK

10' SIDE BUILDING SETBACK

10' SIDE BUILDING SETBACK

10' SIDE BUILDING SETBACK

10' SIDE BUILDING SETBACK

10' SIDE BUILDING SETBACK

10' SIDE BUILDING SETBACK

10' SIDE BUILDING SETBACK

10' SIDE BUILDING SETBACK

10' SIDE BUILDING SETBACK

10' SIDE BUILDING SETBACK

10' SIDE BUILDING SETBACK

10' SIDE BUILDING SETBACK

10' SIDE BUILDING SETBACK

10' SIDE BUILDING SETBACK

10' SIDE BUILDING SETBACK

10' SIDE BUILDING SETBACK

10' SIDE BUILDING SETBACK

10' SIDE BUILDING SETBACK

10' SIDE BUILDING SETBACK

10' SIDE BUILDING SETBACK

10' SIDE BUILDING SETBACK

10' SIDE BUILDING SETBACK

10' SIDE BUILDING SETBACK

10' SIDE BUILDING SETBACK

10' SIDE BUILDING SETBACK

10' SIDE BUILDING SETBACK

10' SIDE BUILDING SETBACK

10' SIDE BUILDING SETBACK

10' SIDE BUILDING SETBACK

10' SIDE BUILDING SETBACK

10' SIDE BUILDING SETBACK

10' SIDE BUILDING SETBACK

10' SIDE BUILDING SETBACK

10' SIDE BUILDING SETBACK

10' SIDE BUILDING SETBACK

PROP. 2-STORY
HYUNDAI DEALERSHIP
1ST FLOOR = 28,000SF
2ND FLOOR = 21,500 SF
TOTAL BLDG SF = 49,500 SF

30' REAR BUILDING
SETBACK

20' TYPE A-3 LANDSCAPE BUFFER

30' SIDE BUILDING SETBACK

30' AVERAGE SPECIAL HIGHWAY
OVERLAY DISTRICT LANDSCAPE BUFFER

125' STORAGE LANE

103.3' TAPER LANE

59.7' TO EXIST DRIVEWAY

148.9' TO EXIST DRIVEWAY

250.4' TO EXIST DRIVEWAY

30' TYPE AA LANDSCAPE BUFFER

30' TYPE AA LANDSCAPE BUFFER

30' TYPE AA LANDSCAPE BUFFER

30' TYPE AA LANDSCAPE BUFFER

30' TYPE AA LANDSCAPE BUFFER

30' TYPE AA LANDSCAPE BUFFER

30' TYPE AA LANDSCAPE BUFFER

30' TYPE AA LANDSCAPE BUFFER

30' TYPE AA LANDSCAPE BUFFER

30' TYPE AA LANDSCAPE BUFFER

30' TYPE AA LANDSCAPE BUFFER

30' TYPE AA LANDSCAPE BUFFER

30' TYPE AA LANDSCAPE BUFFER

30' TYPE AA LANDSCAPE BUFFER

30' TYPE AA LANDSCAPE BUFFER

30' TYPE AA LANDSCAPE BUFFER

30' TYPE AA LANDSCAPE BUFFER

30' TYPE AA LANDSCAPE BUFFER

30' TYPE AA LANDSCAPE BUFFER

30' TYPE AA LANDSCAPE BUFFER

30' TYPE AA LANDSCAPE BUFFER

30' TYPE AA LANDSCAPE BUFFER

30' TYPE AA LANDSCAPE BUFFER

30' TYPE AA LANDSCAPE BUFFER

30' TYPE AA LANDSCAPE BUFFER

30' TYPE AA LANDSCAPE BUFFER

30' TYPE AA LANDSCAPE BUFFER

30' TYPE AA LANDSCAPE BUFFER

30' TYPE AA LANDSCAPE BUFFER

30' TYPE AA LANDSCAPE BUFFER

30' TYPE AA LANDSCAPE BUFFER

30' TYPE AA LANDSCAPE BUFFER

30' TYPE AA LANDSCAPE BUFFER

30' TYPE AA LANDSCAPE BUFFER

30' TYPE AA LANDSCAPE BUFFER

30' TYPE AA LANDSCAPE BUFFER

30' TYPE AA LANDSCAPE BUFFER

30' TYPE AA LANDSCAPE BUFFER

30' TYPE AA LANDSCAPE BUFFER

30' TYPE AA LANDSCAPE BUFFER

30' TYPE AA LANDSCAPE BUFFER

30' TYPE AA LANDSCAPE BUFFER

30' TYPE AA LANDSCAPE BUFFER

30' TYPE AA LANDSCAPE BUFFER

30' TYPE AA LANDSCAPE BUFFER

30' TYPE AA LANDSCAPE BUFFER

30' TYPE AA LANDSCAPE BUFFER

30' TYPE AA LANDSCAPE BUFFER

30' TYPE AA LANDSCAPE BUFFER

30' TYPE AA LANDSCAPE BUFFER

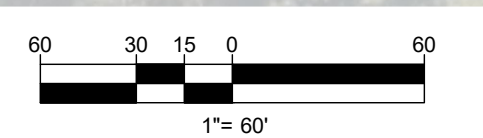
30' TYPE AA LANDSCAPE BUFFER

30' TYPE AA LANDSCAPE BUFFER

30' TYPE AA LANDSCAPE BUFFER

30' TYPE AA LANDSCAPE BUFFER

30' TYPE AA LANDSCAPE BUFFER



These plans have been electronically approved for construction by the Town of Wake Forest Planning Department. This approval may not be edited once issued.

Planning _____

These plans have been electronically approved for construction by the Town of Wake Forest Public Works and Engineering Department. This approval may not be edited once issued.

Public Works/Engineering _____

SHEET TITLE
**EXISTING AND
PROPOSED
DRIVEWAY
MAP**

SHEET NUMBER:
C-302

REVISION 2 - 04/03/2024

BOHLER
BOHLER ENGINEERING NC, PLLC

SITE CIVIL AND CONSULTING ENGINEERING
PROGRAM MANAGEMENT
LANDSCAPE ARCHITECTURE
SUSTAINABLE DESIGN
PERMITTING SERVICES
TRANSPORTATION SERVICES

REVISIONS

REV	DATE	COMMENT	CHECKED BY
1	02/01/2024	RE-REVIEW SET	IRF WES
2	04/03/2024	RE-REVIEW SET	IRF WES

811
Know what's below.
Call before you dig.
ALWAYS CALL 811
It's fast. It's free. It's the law.

PERMIT SET

THIS DRAWING IS INTENDED FOR MUNICIPAL AND/OR AGENCY REVIEW AND APPROVAL. IT IS NOT INTENDED AS A CONSTRUCTION DOCUMENT UNLESS INDICATED OTHERWISE.

PROJECT No.: NCB220294
DRAWN BY: IRF / CB
CHECKED BY: WES
DATE: 04/03/2024
CAD ID: SITE-0

PROJECT:
**HYUNDAI
AUTOMOTIVE
DEALERSHIP
SITE MASTER PLAN**

FOR
**JOHNSON
AUTOMOTIVE**

10012 CAPITAL BLVD, 2517, 2601,
& 2605 BURLINGTON MILLS RD
WAKE FOREST, NC
WAKE COUNTY
TOWN OF WAKE FOREST
PROJECT NUMBER: RZ-23-12
BENCHMARK: N: 789,627.073
E: 2,134,364.095

BOHLER
BOHLER ENGINEERING NC, PLLC
NCBELS P-1132

4130 PARKLAKE AVENUE, SUITE 200
RALEIGH, NC 27612
Phone: (919) 578-9000
NC@BohlerEng.com

**NORTH CAROLINA
PROFESSIONAL
ENGINEER**

WILLIS E. SWARTZ
05/19/03
04/05/24

APR 05, 2024
BOHLER ENGINEERING NC, PLLC PROJECT 20220294 NCB220294 SITE PLAN LAYOUT C-302 EXISTING AND PROPOSED DRIVEWAY MAP