

## Apex Railyard Relocation Study

The Town of Apex has the CSX 'S-Line' rail corridor that runs through their downtown area carrying freight and passengers. Compounding this movement is the location of the Railyard also in downtown that contributes significantly to rail traffic. The relocation study looks at alternatives to the railyards location that would increase safety and decrease vehicular congestion, emissions, vibrations and noise issues in their down town area.



## Wake Transit Plan

The Wake Transit Plan began in 2016, updated in 2021, and now it is time to update this document once more to keep transit investment and operations in Wake County running smoothly. Our population continues to grow and our residents are looking for alternative ways to travel as our roadways continue to be congested. The Wake Transit Plan lays out a strategy to expand travel choice and options, with great attention paid to our communities of concern and public input.



View CAMPO's online map for our past plans and studies!



## Current Projects and Programs



As part of CAMPO's required responsibilities, the MPO develops an annual Unified Planning Work Program (UPWP) that outlines the budget for CAMPO operations and projects it takes on throughout the fiscal year. CAMPO hosts a call for projects every year from its members to fund projects with the intent to better understand transportation needs of our communities. These include larger area studies that are funded completely through the UPWP to smaller hot spot studies on specific road improvements funded jointly by a member jurisdiction and CAMPO.

## Types of Projects & Studies

### Area Studies:

CAMPO's planning area encompasses roughly 1,800 square miles crossing six counties. Periodically, CAMPO attempts to zero into smaller subsets of our jurisdiction to deeply dive into the individual needs for these communities and create a path to implementation of transportation projects. The final recommendation maps have successfully helped participating jurisdictions in updating their own Comprehensive Transportation Plans!

### Corridor Studies:

Corridor Studies focus on improving mobility along the arterial routes that run across the CAMPO planning area, in all modes of transportation.

### Hot Spot Studies:

Hot spot studies are often spearheaded by our local municipalities for areas that have known transportation issues like excessive congestion, connectivity, safety, and access issues. These studies will have CAMPO and local municipalities partner to develop planning level designs and path to implementation to tackle these acute issues.

### Special Studies:

Special studies are projects that may not have a specific study area but instead focus on a topic like safety, improvement types, transit, and/or new technology that could be applied throughout the CAMPO planning area.

# Our Current Projects!

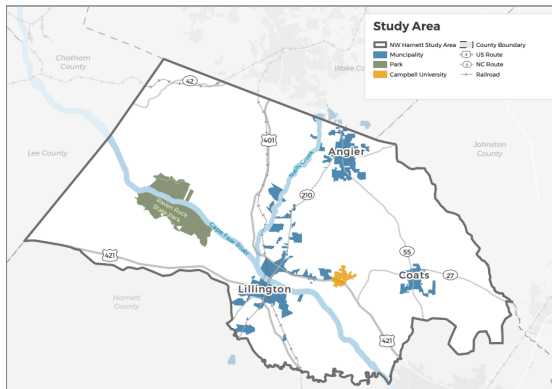


## Southeast Area Study

Clayton, Archer Lodge, Selma, Smithfield, Garner, Benson, Micro, Wilson Mills, Four Oaks, Kenly, and Pine Level municipalities have joined in this planning effort. We are expecting endorsement of the project recommendations in the coming months!

## Morrisville Parkway Access Management Study

This study is looking at access along the parkway and solutions to increase the safety of all modes of travel along the corridor. With lots of new development along the corridor and several high traffic locations this study highlights safety concerns and provides recommendations on site improvements.



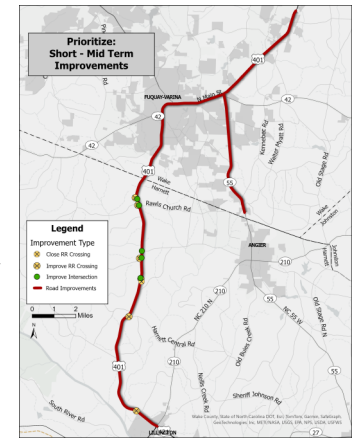
## NW Harnett Transit Plan

Harnett County and local municipalities are interested in exploring what transit services for their jurisdiction may look like.

This study will examine the transit market and local desires/needs to create a transit blueprint, and implementable plans for this service.

## U.S. 401 Corridor Study

U.S. 401 is a major backbone of the area heading from Raleigh to Harnett County and has experienced rapid growth. The corridor study analyzes various ways to increase vehicle and pedestrian safety throughout the corridor and revisit the alignment of a new location for U.S. 401 around Fuquay Varina instead of through downtown.



## Locally Coordinated Public Transit-Human Services Plan

An update to the 2018 Coordinated Public Transit Human Services Plan, this will support the prioritization and implementation of transportation services within CAMPO to meet the transportation needs of our vulnerable communities. Extensive public engagement during the process hopes to ensure that the voices of everyone are heard.

## Regional Safety Plan

Data shows this region sliding in the wrong direction in terms of vehicular accidents and injuries. This plan aims to take a comprehensive look at transportation safety in our region and create implementable steps to improve these metrics. This plan is designed to serve as the necessary prerequisite plan for municipalities to apply for federal safety grants like the Safe Streets For All program.

