



2014



Franklin County Child Health Forum



Welcome!

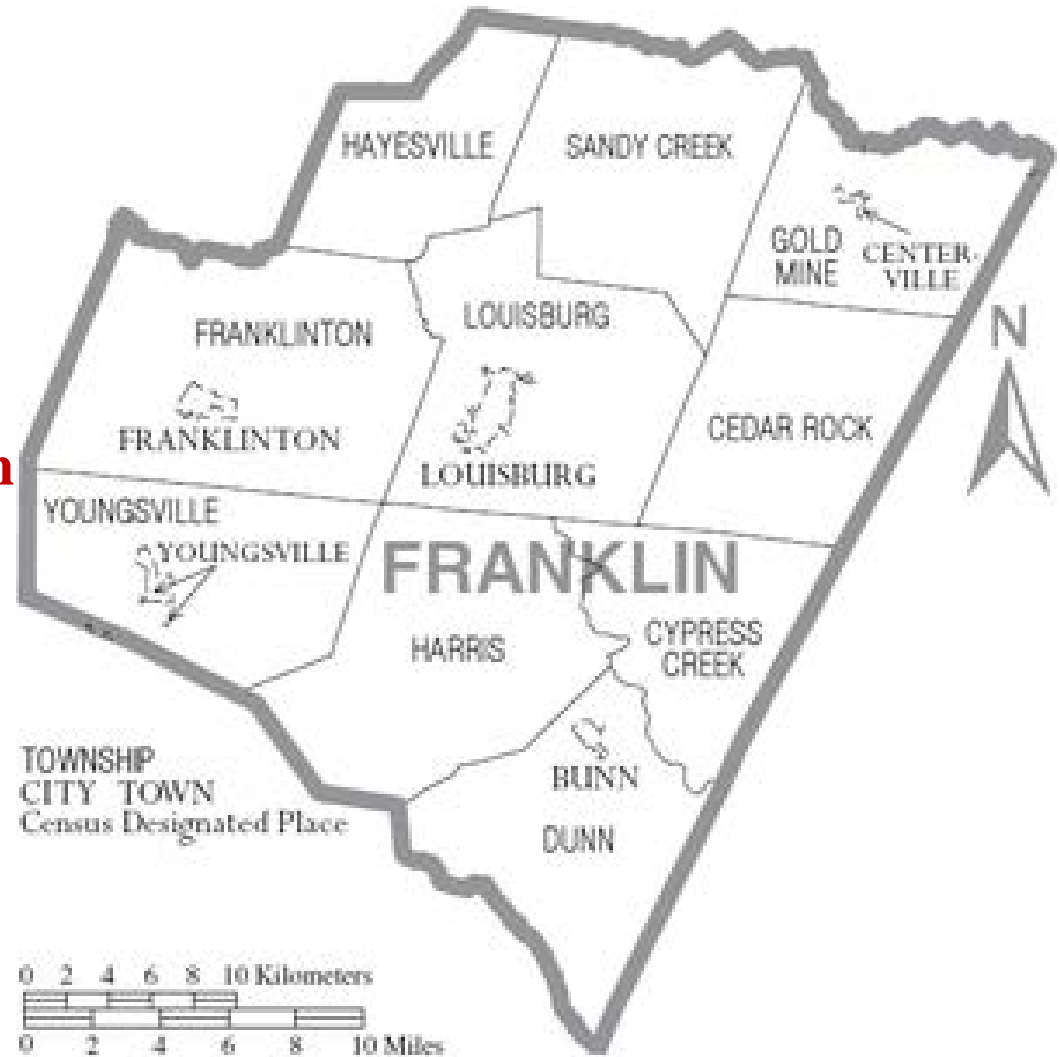
Our goal is identifying and improving resources in our community to help our children be the best they can be.

Together we can make a difference.



Franklin County

- **24.2% families with children under age 18 below poverty level**
- **Average annual income \$21,718**
- **Language other than English 7.9%**
- **White = 69.8% African American = 27%**
- **Hispanic = 7.7%**
- **Other = 1.6%**



Children served at Franklin County Health Department 7/1/12-6/30/13

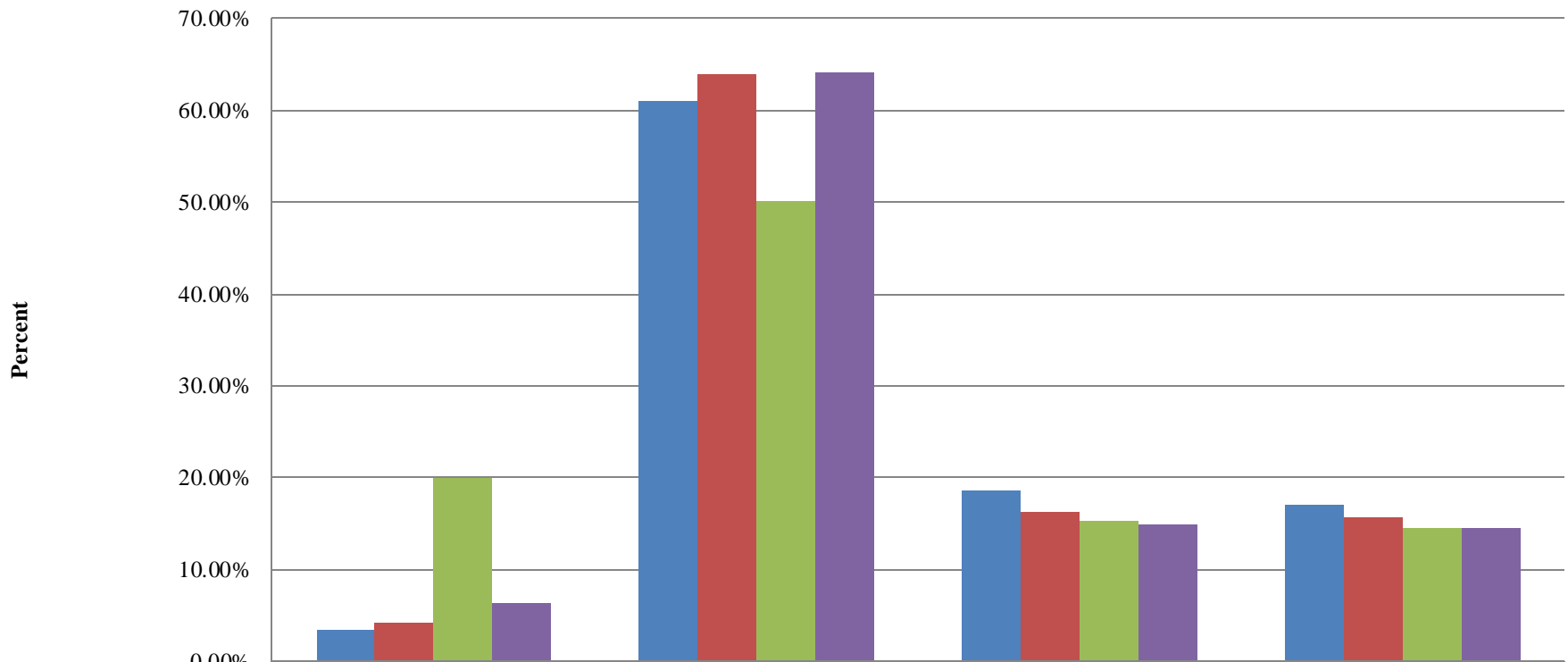
1, 292 patients: 0 – 5 years 501
 6 – 20 years 791

| | | | |
|------------|--------|------------------|-------|
| White | 31.5 % | African American | 42.3% |
| Unreported | 25.7% | Other | 0.5% |

| | | | |
|------------|-------|----------|-------|
| Medicaid | 83.0% | Self Pay | 10.5% |
| Other Ins. | 6.0% | | |

Physical Activity and Nutrition Surveillance

Prevalence of Underweight, Healthy Weight, and Obesity for children ages 2-4 (2012)

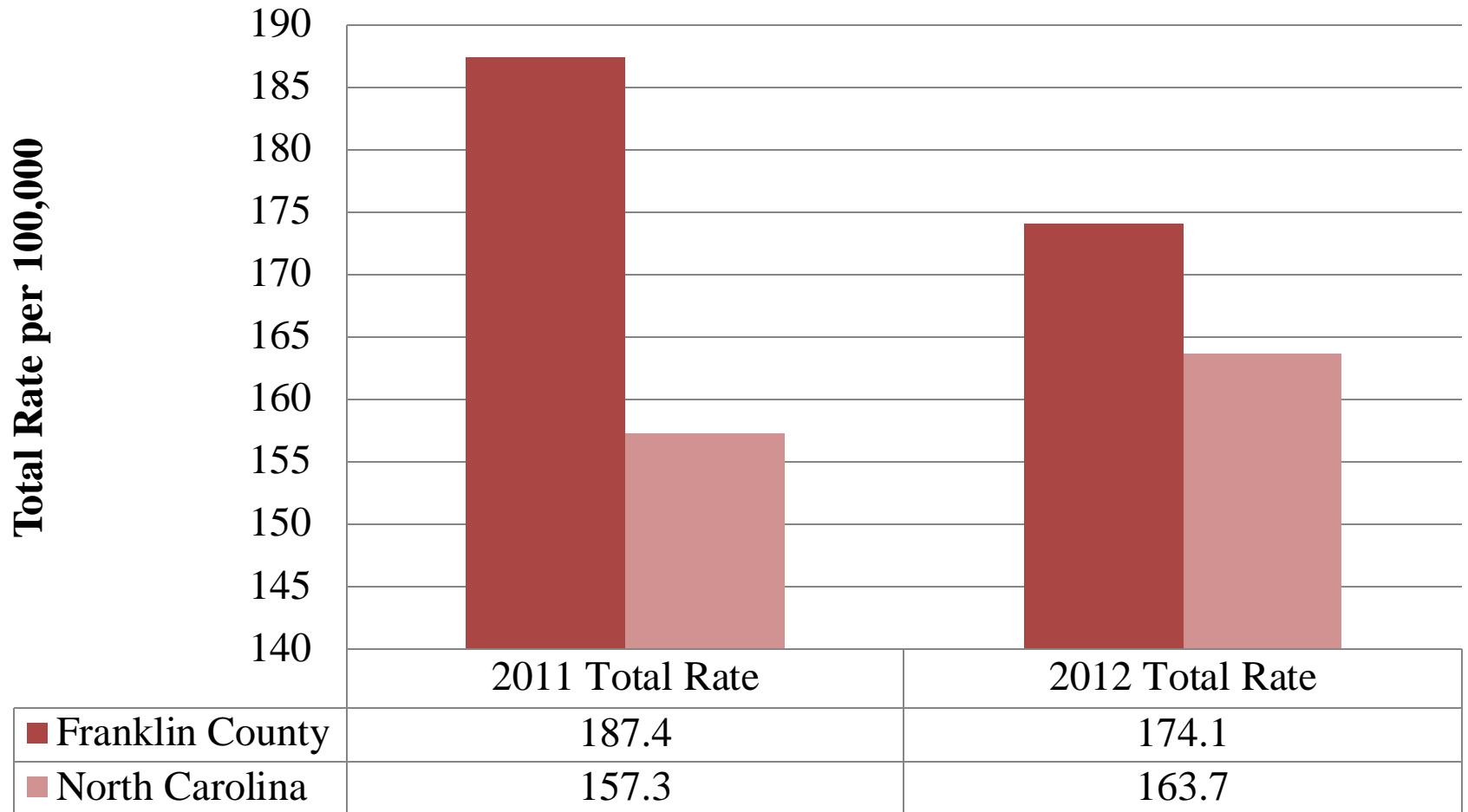


| | Underweight | Healthy Weight | Over Weight | Obese |
|------------------------|-------------|----------------|-------------|--------|
| ■ Franklin County 2011 | 3.50% | 61.10% | 18.50% | 17.00% |
| ■ North Carolina 2011 | 4.20% | 63.90% | 16.20% | 15.70% |
| ■ Franklin County 2012 | 19.90% | 50.20% | 15.30% | 14.60% |
| ■ North Carolina 2012 | 6.40% | 64.20% | 14.90% | 14.50% |



2011-2012 Asthma Diagnosis

2012 Asthma Hospital Primary Diagnosis at Discharge



Areas of concern



What can we do to make a
difference?