

Thrive



United Way of Central Texas Community Impact Report

WE UNITE

the community to create opportunity and access for all Central Texans to thrive in the building blocks of life: Health, Education, & Financial Stability.

WE VALUE

Integrity, Compassion, Excellence, Transparency, and Teamwork.



Our mission is to create opportunity and access for all Central Texans to thrive in the fundamental building blocks of life: Health, Education, and Financial Stability. We believe that when we come together, we can make a real impact and help everyone in our community reach their full potential. Let's create a brighter future together!

STRONG COMMUNITIES

QUALITY EDUCATION

GOOD JOBS

HEALTHY LIVES



**WE ARE GUIDED BY OUR
PRINCIPLES**

**OUR RESULTS TELL
OUR STORY**

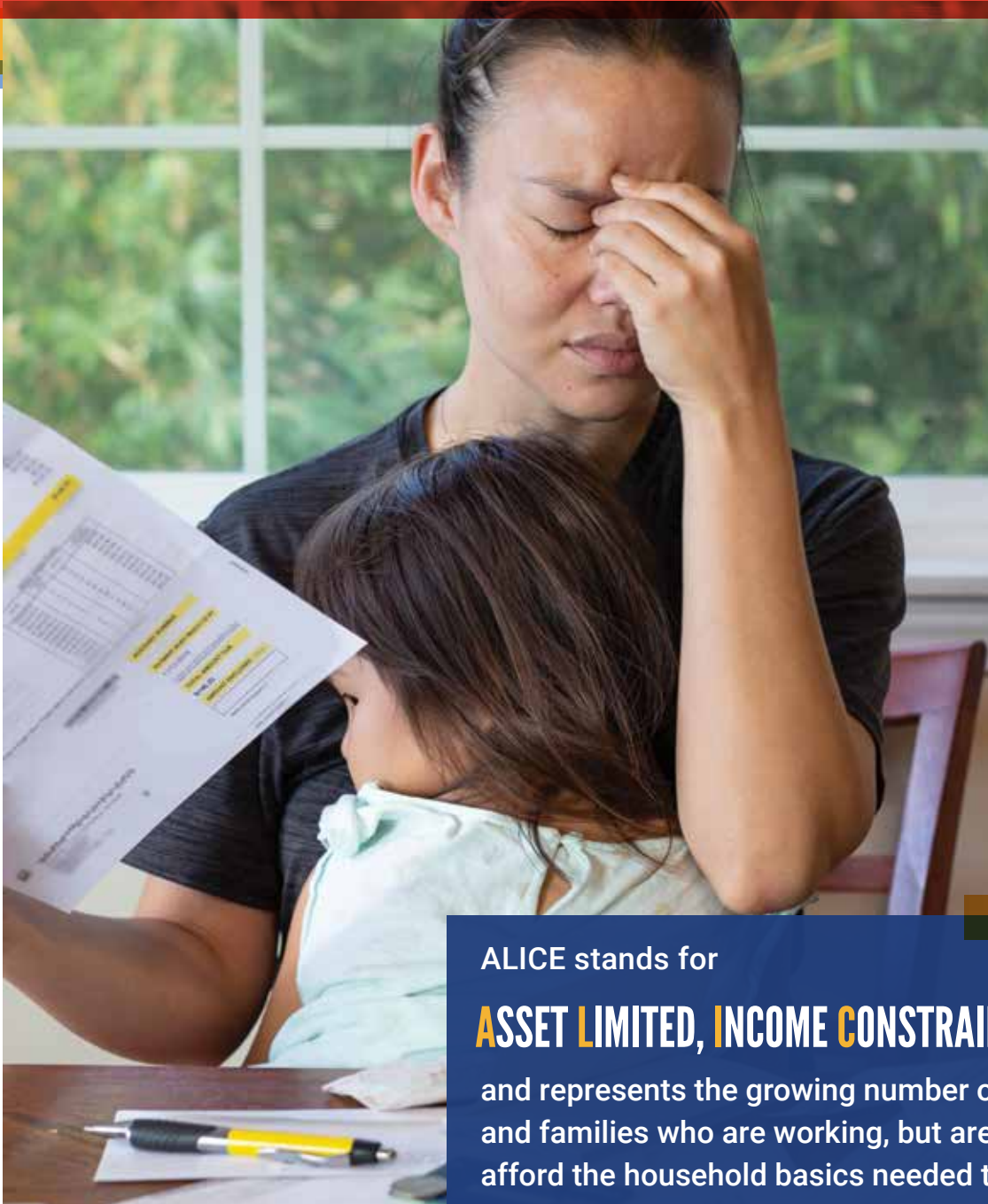
**OUR FOCUS IS THE
COMMUNITY**

**OUR EFFORTS ARE
COLLABORATIVE**

**OUR SOLUTIONS ARE
EQUITABLE**

PRIORITY 1

We're putting our services and resources where they matter most—helping families in the ALICE population and those living in poverty who want a better, sustainable quality of life and a path towards self-sufficiency.



ALICE stands for

ASSET LIMITED, INCOME CONSTRAINED, EMPLOYED

and represents the growing number of individuals and families who are working, but are unable to afford the household basics needed to live in the modern economy.

42% OF CENTRAL TEXAS FAMILIES DON'T EARN ENOUGH TO AFFORD THE BASIC NECESSITIES OF HOUSING, FOOD, CHILD CARE, HEALTHCARE, AND TRANSPORTATION

ALICE IN BELL COUNTY

We all know people who are ALICE. They are workers who educate our kids, keep us healthy, and make our quality of life possible, yet they don't earn enough to support their own families. ALICE households are forced to make tough choices, like deciding between quality child care or paying the rent, which have long-term consequences not only for ALICE, but for all.

The majority of hourly jobs in the state paid less than \$20 per hour in 2018, making it difficult for many to make ends meet, even with two workers employed full time.

58,738

BELL CO. HOUSEHOLDS LIVED BELOW THE ALICE SURVIVAL THRESHOLD IN 2021

2021 ALICE Household Survival Budget for Bell Co.

Monthly Costs & Credits	Single Adult	Family of Four*
Housing - Rent	\$502	\$549
Housing - Utilities	\$154	\$292
Child Care	—	\$1,100
Food	\$352	\$960
Transportation	\$342	\$819
Healthcare	\$211	\$882
Technology	\$75	\$110
Misc	\$164	\$471
Tax Payments	\$214	\$738
Tax Credits	—	-\$1,150
Monthly Total	\$2,014	\$4,771
Annual Total	\$24,168	\$57,252
Hourly Wage**	\$12.08	\$28.63

*family of four = 2 adults, plus 1 infant & 1 preschooler | ** Wage working full-time required to support this budget
For ALICE Survival Budget sources, visit: [UnitedForALICE.org/methodology](https://unitedforalice.org/methodology)



PRIORITY 2 **Ensure a robust and supported 211 information referral helpline**

United Way of Central Texas administers one of twenty-five 211 call centers in Texas and covers a seven-county region, connecting individuals to valuable community resources to meet their needs.

Our trained HELPLINE specialists are good listeners, blending understanding and expertise to provide information and referrals drawn from a comprehensive database of social services. 211 always answers the call for help, 24 hours a day, 7 days a week, in many languages.

Resources are extensive and include information about low-income tax preparation, counseling, senior services and more. 211 also serves as a primary point of contact during times of disaster.

Whether you need help finding child care, food pantries, care for an aging parent or a haven from domestic violence, 211 is the number to call when you don't know who to call.



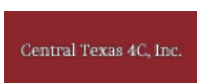
91,000

CALLS WERE ANSWERED BY THE UNITED WAY OF CENTRAL TEXAS HELPLINE IN 2020

PRIORITY 3 **Partner with organizations in our community who support and further our cause**

Guided by research and community-based data, the United Way of Central Texas directs its attention and resources towards local partners and programs. These initiatives aim to provide support to ALICE individuals and those facing poverty, all the while fostering a positive economic influence on the community.

OUR COMMUNITY PARTNERS



WEEKEND NUTRITION PROGRAM



Temple Housing Residential Corporation





PRIORITY 4 Create pathways to financial stability

We help create pathways to financial stability by equipping people with the tools they need to obtain better jobs, keep more of what they earn, and save for their children's futures. We have made economic mobility a priority for Central Texas by creating partnerships that connect individuals and their families to resources that provide opportunities for growth in income and assets.

PRIORITY 5 Follow client journeys to ensure their success and share impact with community stakeholders

We help clients build their own journeys by connecting with the right programs and expertise, along with coaching and client support for sustainable growth and independence.



OUR STRATEGY

ASSESS NEEDS

DEVELOP PARTNERSHIPS

FOCUS ON INTEGRATED
CLIENT JOURNEYS

INVEST RESOURCES

ENGAGE IN ADVOCACY THAT
IMPROVES PROCESSES, LIVES,
& COMMUNITIES

OUR FOCUS

1. HEALTH **GOAL: AFFORDABLE SERVICES**

Lead and invest in programs that improve health access and outcomes for all Central Texans. Everyone needs access to health services. We strive to protect and improve individual well-being. UWCT works to provide the opportunity to:

- Become and remain able to work
- Stay engaged with family
- Participate in life



2. EDUCATION **GOAL: A STRONG WORKFORCE**

Lead and invest in educational programs that ensure access to quality learning takes place at all ages. UWCT works to provide access to:

- Early childhood education
- Kindergarten readiness
- Out-of-School enrichment
- Mentors
- Academic Support



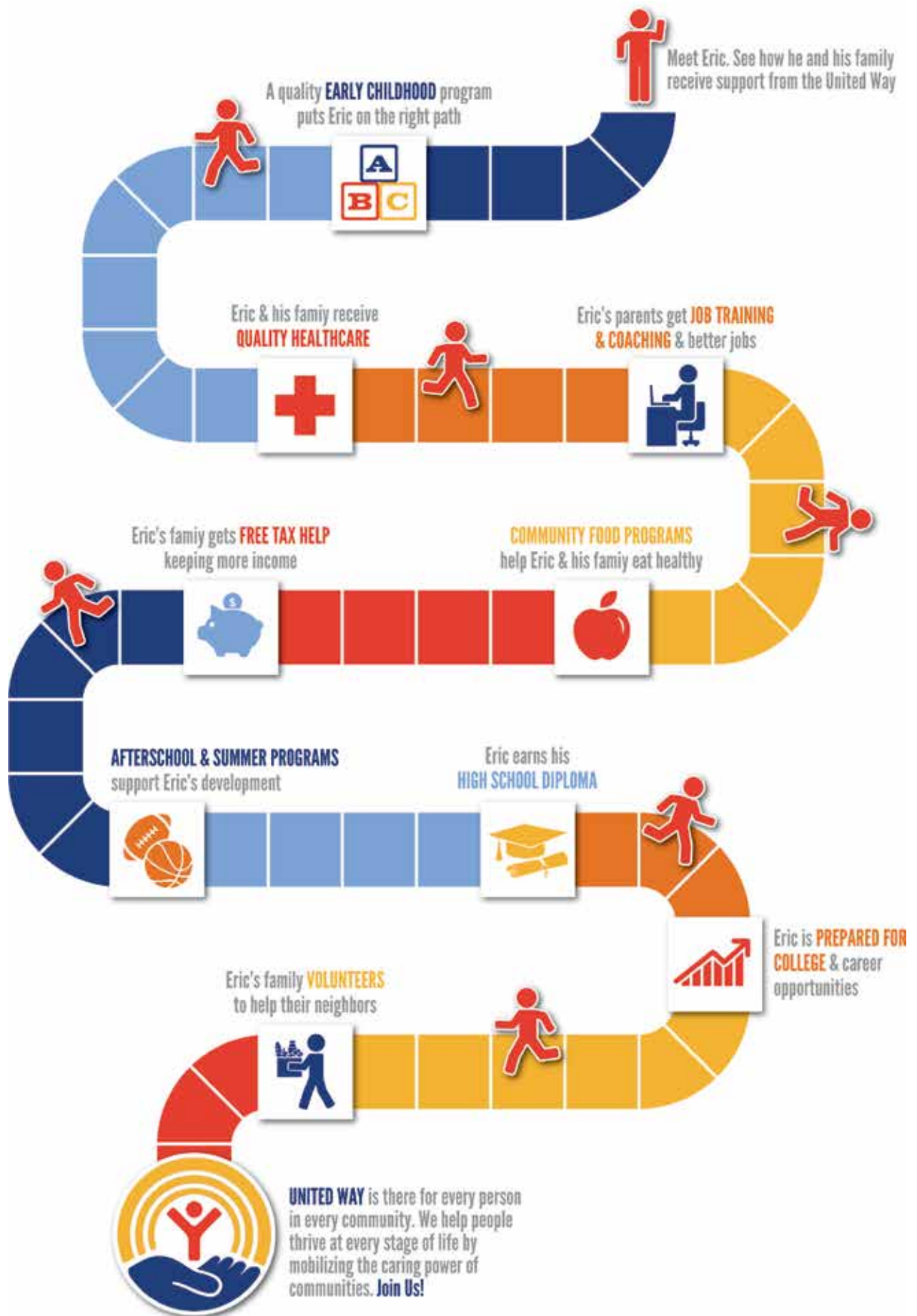
3. FINANCIAL STABILITY **GOAL: INDEPENDENT & SELF SUSTAINING**

Lead & invest in financial stability programs that ensure individuals/families can get and keep better jobs, reduce debt, and build savings for sustainable living. Collaboration that creates pathways to financial stability and a stronger community:

- Tools
- Resources
- Educational support



UNITED WAY BRINGS PEOPLE TOGETHER TO BUILD STRONG COMMUNITIES WHERE EVERYONE CAN GET A QUALITY EDUCATION, A GOOD JOB, AND A HEALTHY LIFE



OUR IMPACT

We're all about making a meaningful impact in the lives of individuals and families facing financial challenges. Our programs are specifically designed to uplift and support the ALICE population (you know, those who work hard but still struggle to make ends meet) and those living in poverty across our community.

BRIDGES TO WELLNESS & HEALTH

BridgeS to Wellness & Health is a collaboration between Baylor Scott & White Health, UWCT, and the Temple Community Clinic. BridgeS works with underinsured and uninsured clients who can't afford the necessary prescriptions or medical equipment and supplies. The goal is to bridge the gap while a client awaits approval for long-term affordable prescription coverage. Many of the ALICE population don't have healthcare coverage. Without it, poor health can lead to less treatable and costly complications. UWCT works to connect people with the healthcare they need. The BridgeS program decreases medical costs assumed by hospitals, insurance rate payers, and taxpayers—particularly by reducing unnecessary ER visits.

"I DON'T KNOW WHAT I WOULD HAVE DONE WITHOUT BRIDGES TO WELLNESS & HEALTH. MY DOCTOR SAID I COULD NOT LEAVE THE HOSPITAL WITHOUT THE OXYGEN TANK AND I DIDN'T HAVE THE MONEY TO PAY FOR IT. WITHOUT THE ASSISTANCE FROM BRIDGES, I WOULD STILL BE IN THE HOSPITAL."

—Susie, BridgeS client



OVER

1100

CLIENTS RECEIVED ASSISTANCE
FROM THE BRIDGES PROGRAM

VITA VOLUNTEER INCOME TAX ASSISTANCE

During Tax Season, (Jan—April) the IRS Volunteer Income Tax Assistance (VITA) program offers free tax help to people who make \$64,000 or less, persons with disabilities, the elderly, and limited English speakers who need assistance preparing their tax returns. IRS-certified VITA volunteers provide free basic tax services, ensuring 100% of the refund goes directly to the customer.

Two important aspects of helping Central Texans reach financial stability is to help them keep more of the money they earn and grow their savings. UWCT and their local partners assist community members at tax-time by offering free tax assistance, both in-person and online.

At VITA sites, volunteers provide basic return preparation with electronic filing. In addition to informing clients about valuable tax credits and deductions for which they may be eligible, VITA provides a safe alternative to high-fee tax services and predatory lenders offering expensive refund anticipation loans, while also providing an avenue for financial education.

In addition, VITA can help many working families access valuable tax credits like Earned Income Tax Credits (EITC) and Child Tax Credits (CTC), keeping money in the hands of individuals and families.

1,067 TAX RETURNS
PROCESSED

\$1,300,000
IN TAX REFUNDS

\$479,000
IN EARNED INCOME
TAX CREDITS

\$354,000
IN CHILD TAX CREDITS

759 
**INDIVIDUALS WERE
SERVED BY THE
COMMUNITY HUB
PROGRAM**

COMMUNITY HUB

Community Hub is a cooperative program with Baylor Scott & White Health Plan to remove barriers to quality healthcare and address social determinants of health, economic, and social situations that affect health status. Case managers identify and connect patients to resources relating to housing, food, child/eldercare, transportation, utilities, employment, family/community support, birth certificates, home modifications, and other needs.

DISASTER ASSISTANCE

While you will most often find United Way at work in our community in the areas of people's education, financial stability, & health, you also often find them responding to local disasters.

From setting-up disaster assistance funds, to organizing volunteer initiatives, holding donation drives, or helping with long-term recovery, United Way plays an important role in helping Central Texans when disaster strikes.




\$721,125 IN DISASTER RELIEF
ADMINISTERED BETWEEN 2020-2022




5,000
BOOKS DONATED

LITERACY INITIATIVE



Literacy is widely accepted as the key to student success. Yet, data shows that literacy has been at a standstill in recent years. In order to move forward in a positive direction, it's critical that out-of-school time (OST) programs take an increased role in developing and growing the literacy of both young children and older youth. OST programs utilize creative methods to increase students' engagement in & appreciation for reading & writing. United Way of Central Texas works with local schools and organizations to fund and grow these programs because all kids deserve to reach their full potential and become the next generation of community leaders.



\$47,000
TOTAL BOOK VALUE



HEALTHCARE NAVIGATORS

This collaborative program provides a network of certified Healthcare Navigators for our Central Texas community, delivering support for individuals and families looking to sign up for health insurance through the Marketplace, Medicaid, or CHIP.

Navigators work directly with clients to help them compare health plans, understand benefits, and apply for subsidies to lower their monthly premiums.

ADVOCACY

The United Way of Central Texas works on the front line of our community—assessing needs, devising strategies, & mobilizing resources to improve lives and build a vibrant Central Texas. Through our daily work, the community relationships we maintain, and the close ties to those we serve, United Way has established itself as an expert on the unique needs of our community.

United Way serves as a public policy voice of Central Texans. We translate the local work we do into opportunities for systemic change through policy in the areas of education, health, financial stability, and nonprofit/community strengthening. Our approach to policy is non-partisan and issue-focused. We aim to inform, educate, and build consensus.



EDUCATION

HEALTH

FINANCIAL
STABILITY

COMMUNITY
—AND—
NONPROFITS

OUR PARTNERS

By joining forces with corporate, civic, & nonprofit partners, we're able to amplify our overall impact to address today's complex challenges facing Central Texas. Our partners contribute much more than money. Their ideas, volunteer power, & in-kind support, help create a positive, measurable impact. Harnessing the power of many allows us to make the community better & stronger for everyone.

CORPORATE PARTNERS

Our corporate partners are integral pillars of Central Texas. They drive the economy, inform workforce and education needs, and

keep the community vibrant. Their generous support enables us to continue improving lives and creating change year after year. They understand that doing good in the community where you live and work is not only good for business, it is the only way to do good business.

"I SUPPORT THE UNITED WAY OF CENTRAL TEXAS BECAUSE I SEE ALL THE POSITIVE IMPACT IT PROVIDES. THE SINCERE WORK THAT IS ACCOMPLISHED NOT ONLY BENEFITS THE WONDERFUL CUSTOMERS THAT I HAVE BUT ALSO SUPPORTS, DIRECTLY AND INDIRECTLY, MY PARTNERS. UWCT ALLOWS ME TO FULFILL MY COMMUNITY SERVICE MISSION AS A REPRESENTATIVE OF THE COMPANY I WORK FOR. IT'S TRULY A GREAT PARTNERSHIP!"

-Eric Tovar, H-E-B Plus! Belton



DONORS

When you donate to United Way, your investment becomes part of a collective effort. United Way gifts enjoy a powerful multiplier effect, because donations are pooled with other resources to increase the overall impact. United Way's work is results-driven & research-based, ensuring each donation accomplishes more than can be done through a single charity.

To Donate:



Our Donors:



4,087 DONORS

670 VOLUNTEERS

72 WORKPLACE CAMPAIGNS

(2022 figures)



VOLUNTEERS

Making real change requires people to come together to support one another. That's what the United Way does by facilitating volunteerism in our community. Whether it's leading a food drive, offering mentoring or tutoring, or helping a senior citizen file their taxes, each of us can take action to help make our community a better place where everyone can thrive.

DAY OF CARING

UWCT's Day of Caring is a strategic volunteer program created to help advance the common good on issues of education, income & health. The Day of Caring is more than a single day of volunteering, it is the launch for ongoing volunteer engagement and opportunities.

CHROME & CAROLS

An annual event held by UWCT in partnership with Horny Toad Harley Davidson, Chrome & Carols kicks off the holidays by auctioning beautifully decorated trees sponsored by local businesses with over \$1000 of gifts under each tree. It's a celebration & fundraiser to support programs that positively impact our community & improve the lives of individuals & families.

READ ACROSS AMERICA

Read Across America is an annual national reading, motivation, and awareness effort that calls for every child to celebrate reading!

**United
Way**



United Way of Central Texas

uwct.org • info@uwct.org • 254.778.8616
4 North 3rd Street, Temple, TX 76501