

John Rex Endowment

Our Strategic Roadmap

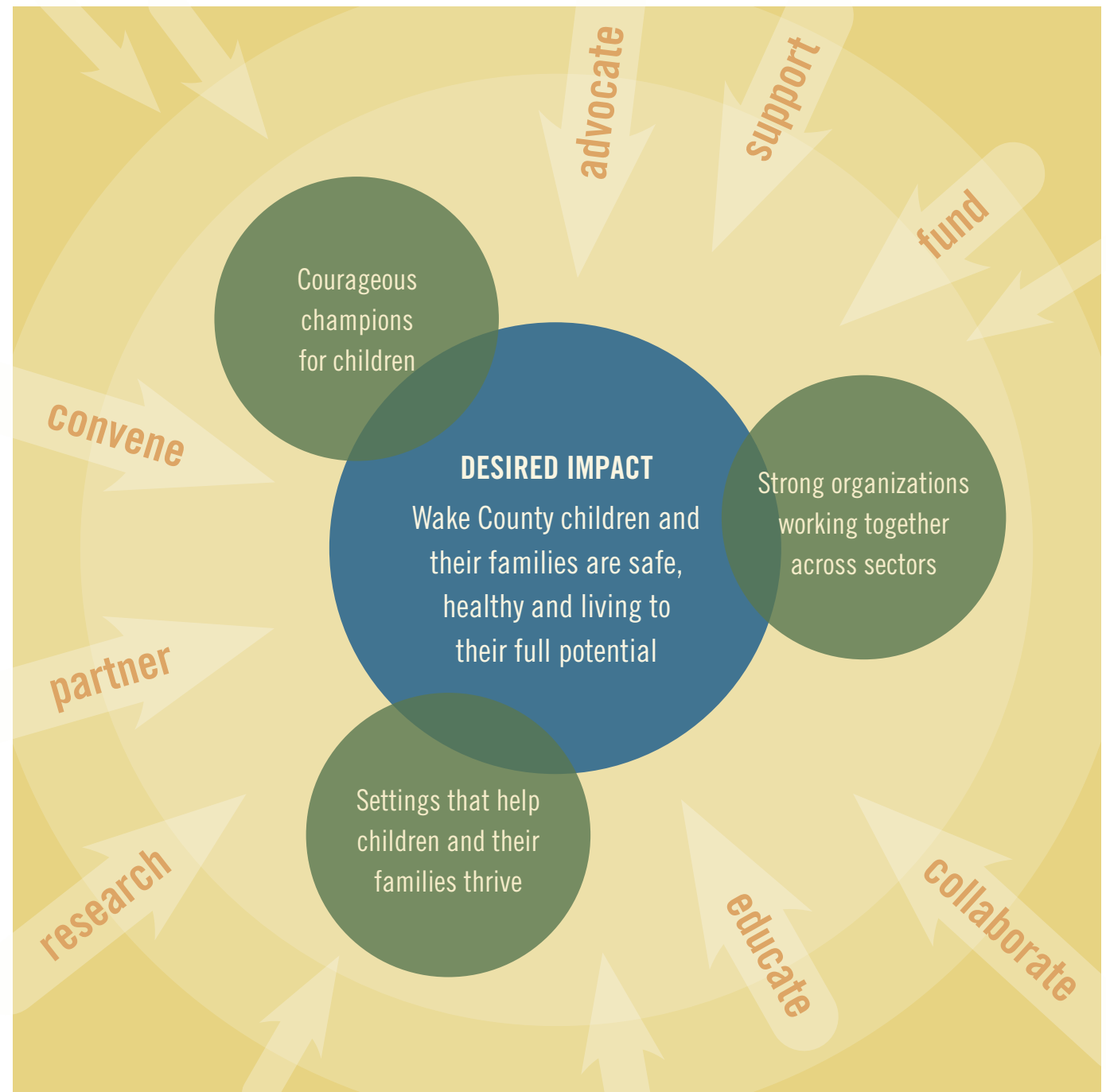
The John Rex Endowment values being a learning organization that strives to improve based on insights gained from all experiences. Recognizing our county's landscape is changing, the Strategic Roadmap is the result of a multi-level process which engaged our board and staff, grantees, and other community representatives. It builds on what we have learned from 19 years of being a Wake County funder and community partner.

Our desired impact is to ensure children and their families are safe, healthy and living to their full potential. As we move forward, we will prioritize developing and strengthening:

- ▶ Courageous champions for children who will stand up and stand together to make tough decisions and take bold actions on their behalf.
- ▶ Strong organizations working together across sectors to address the needs of children and their families.
- ▶ Community settings where children and their families thrive.

We will continue to abide by our guiding principles to focus on prevention; support promising and proven practices; address the connected factors that influence children's well-being; and commit to and deepen our understanding of health equity.

We will continue to seek system-level change and support nonprofit organizations to effectively deliver their mission.



Questions on the Strategic Roadmap

email Sabrina Slade at sabrina@rexendowment.org