

The Connection of Social Determinants to Children's Health and Well-being

Request for Proposals (RFP)

January 17, 2019

Today's Presenters



Kellan Moore
President & CEO
John Rex Endowment



Gladys Hairston
Program Officer
John Rex Endowment



Daijah Street Davis
Project Manager
Healthy Places by Design



Risa Wilkerson
Executive Director
Healthy Places by Design



Phil Bors
Technical Assistance Director
Healthy Places by Design



Webinar Technical Issues

- Email or call Daijah Street Davis at:
daijahd@healthyplacesbydesign.org | 919-949-7833
OR
- Use the webinar's Chat feature to reach Daijah

NOTE: If you are listening to the webinar by phone, we can only receive your questions through the Chat feature.

The Connection of Social Determinants to Children's Health and Well-being

Webinar Agenda/Outcomes

- Create a shared understanding of the focus and criteria for the RFP and LOI process
- Review the Endowment's philosophy on the desired change we seek at three levels – Organizational, Community and System-level change
- Explain the two funding path options that are available
- Answer your questions so you can make an informed decision about whether this funding opportunity is a good fit for your organization and/or collaborative.



Key Dates in Application Process

February 12, 2019 at 11:59 PM EST	Letters of Intent (LOIs) due
Week of February 18, 2019	John Rex Endowment notifies LOI applicants and invites full applications for consideration
April 9, 2019 at 11:59 PM EST	Applications due
No later than May 31, 2019	Applicants notified if submission is advancing to review by Board of Directors
No later than June 15, 2019	Applicants notified of funding decision
July 1, 2019 or later	Grant start dates

What We Will Fund: Guidance and Criteria for this RFP

- Social Determinants of Health themes and their connection to child health and well-being
- Authentic collaboration with key partners
- Intentional engagement of community residents
- Data to show the need and rationale for the specific approach
- Commit to long-term sustainability by pursuing change at three levels:
 - Building organizational capacity
 - Shaping community policies and environments
 - Supporting system-level improvements
- Fit with the John Rex Endowment's guiding principles:
 - Focusing on prevention;
 - Supporting promising and proven practices;
 - Addressing the connected and diverse factors that influence children's well-being; and
 - Committing to and deepening our understanding of health equity.
- Align with John Rex Endowment's Strategic Roadmap priorities to develop and strengthen:
 - Courageous champions for children
 - Strong organizations
 - Community settings
- Prioritize vulnerable Wake County children and their families

What We Will Fund: Guidance and Criteria for this RFP

- **Economic Stability**

- ❖ Employment
- ❖ Food Insecurity
- ❖ Housing Instability
- ❖ Poverty

- **Education**

- ❖ Early Childhood Education and Development
- ❖ Enrollment in Higher Education
- ❖ High School Graduation
- ❖ Language and Literacy

- **Social and Community Context**

- ❖ Civic Participation
- ❖ Discrimination
- ❖ Incarceration
- ❖ Social Cohesion

- **Health and Health Care**

- ❖ Access to Health Care
- ❖ Access to Primary Care
- ❖ Health Literacy

- **Neighborhood and Built Environment**

- ❖ Access to Foods that Support Healthy Eating Patterns
- ❖ Crime and Violence
- ❖ Environmental Conditions
- ❖ Quality of Housing

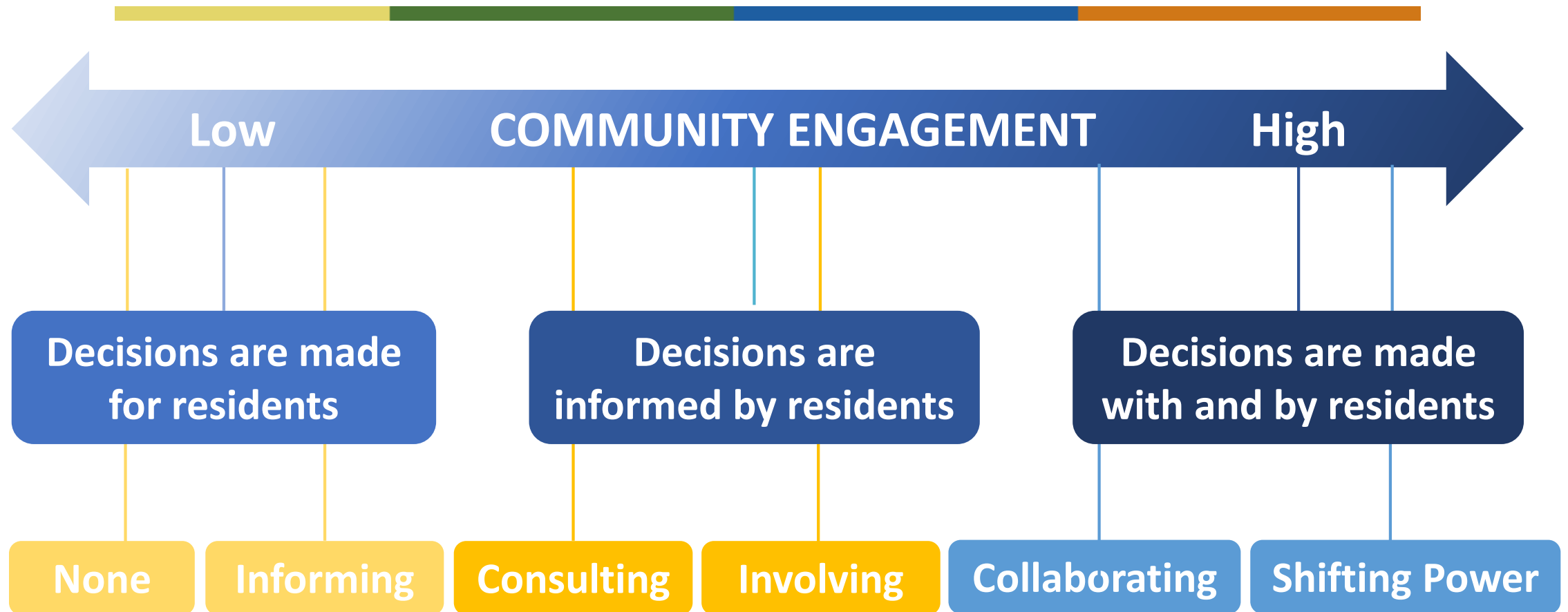


What We Will Fund: Guidance and Criteria for this RFP (cont.)

- Change and improvements at one or more of these three levels:
 - Building organizational capacity
 - Shaping community policies and environments
 - Supporting system-level improvements



Spectrum of Engagement

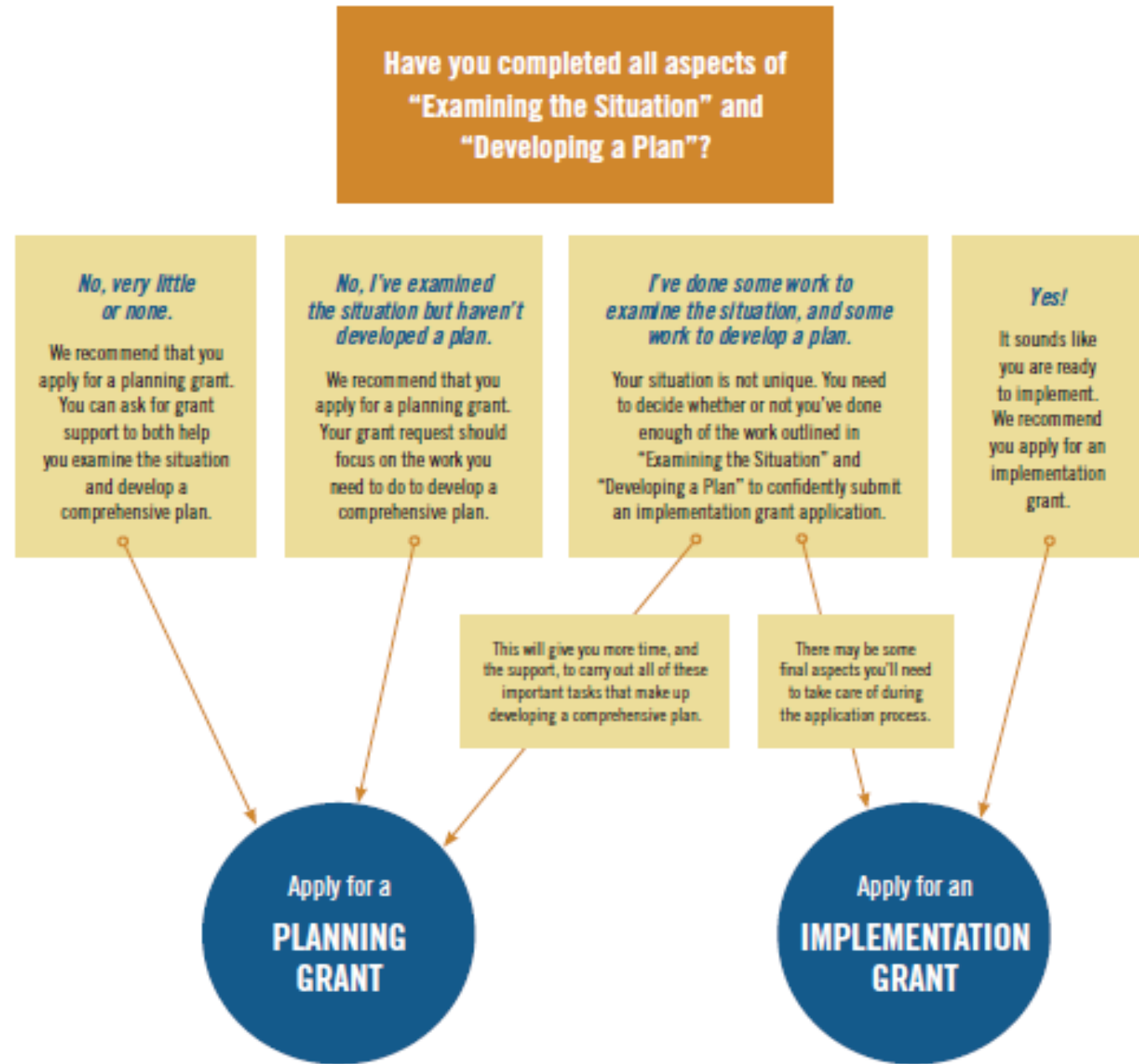


Grant Size and Term

- The John Rex Endowment has approximately \$1.5 million available for new grant awards in this funding opportunity.
- Two funding types
 - Planning grants: typically six-to-18-month grants; range from \$40,000 to \$150,000
 - Implementation grants: typically multi-year (two-to-four years); between \$300,000 and \$600,000

Funding Paths: Planning or Implementation

- Planning grants help determine:
 - Who needs to be involved and who will be impacted
 - How will you intervene
 - What are the expected outcomes
- Implementation grants help execute a selected intervention/approach



Questions in Advance



1. What are examples of "root level" work vs organizations whose work is within the Pair of ACEs framework?
2. Are we eligible to apply as a current grantee?
3. Are grants be distributed equally among proposals that focus on organizational capacity building, systems level changes, community policies?

Questions?



Contact Information

Gladys Hairston, Program Officer

gladys@rexendowment.org

(919) 838-1110 ext 6