

**JAECO**  
Consulting Engineers and Land Surveyors

NC License F-0289  
333 Wade Ave., Raleigh, N.C. 27605  
Phone: (919) 828-4428  
Fax: (919) 828-4711  
E-mail: info@jaeco.com

www.jaeco.com



### THE MEADOWS & THE GLEN AT HOLLYBROOK

**SMITH-EDWARDS, LLC**  
2643A Wendell Rd.  
Wendell, NC 27591

#### ABBREVIATIONS

EX	EXISTING	TBR	TO BE RELOCATED
PROP	PROPOSED	FP	FLOOD PLAIN
APPROX	APPROXIMATE	FEMA	FEDERAL EMERGENCY MANAGEMENT AGENCY
LOC	LOCATION	DB	DEED BOOK
DB	BOOK OF MAPS	PG	PAGE
PG	PAGE	ESMT	EASEMENT
ROW	RIGHT OF WAY	TYP	TYPICAL
N/F	NOW OR FORMERLY	SWM	STORMWATER MANAGEMENT
ROW	RIGHT OF WAY	EMAG	EX MAG NAIL
NIP	NOW OR FORMERLY	ECM	EX CONCRETE MONUMENT
IP	IRON PIPE SET	IP	IRON PIPE SET
IPS	IRON PIPE SET	IP	IRON PIPE SET
EOP	EDGE OF PAVEMENT	GIS	GEOGRAPHIC INFORMATION SYSTEM
SS	SANITARY SEWER	NCDOT	NORTH CAROLINA DEPARTMENT OF TRANSPORTATION
FM	FORCE MAIN		
FH	FIRE HYDRANT		
ELEC	ELECTRIC		
TBD	TO BE DETERMINED		
TBR	TO BE REMOVED		

#### LEGEND

---	SETBACKS
---	EASEMENTS
---	SIGHT DISTANCE EASEMENTS
---	CENTERLINE
(SWM)	APPROX LOC PROP SWM FACILITY

#### HATCH LEGEND

(Hatched Pattern)	PASSIVE OPEN SPACE (UNIMPROVED) (UDO 7.4.A.1)
(Hatched Pattern)	PARK SPACE (IMPROVED) (UDO 7.4.A.2)
(Hatched Pattern)	ACTIVE RECREATION AREA (UDO 7.4.A.2)

#### MASTER PLAN - "THE GLEN"

Number	Description	Date
1	PER TRC COMMENTS	1/9/2020
2	RIGHT-OF-WAY UPDATES	3/4/2020
3	PER TRC COMMENTS	5/1/2020
4	PER TRC COMMENTS	5/22/2020

JAECO #: 297-02

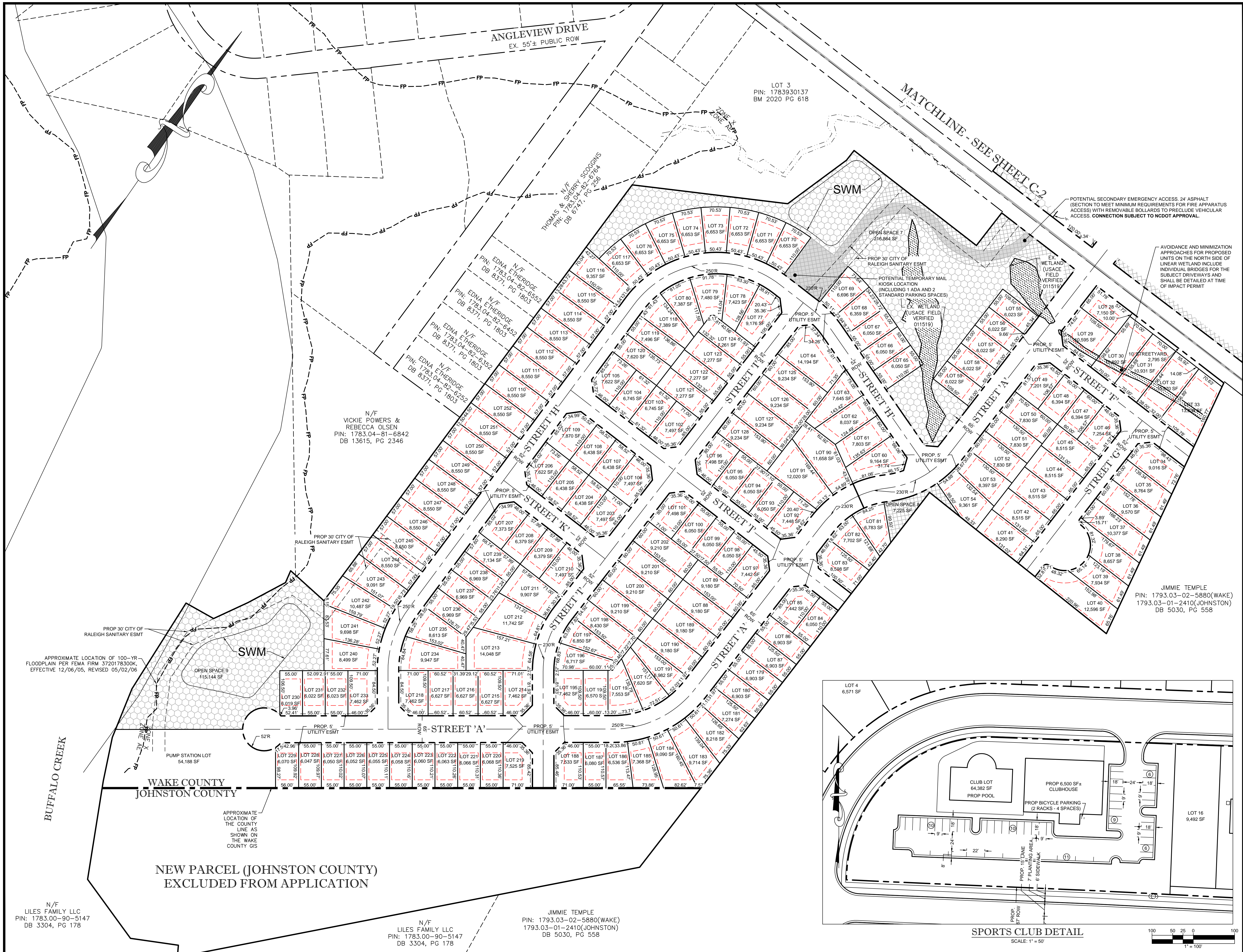
DRAWING SCALE: AS SHOWN

DRAWN BY: TT

CHECKED BY: JC

DATE ISSUED: 12/04/19

# C-3



NEW PARCEL (JOHNSTON COUNTY)  
EXCLUDED FROM APPLICATION

N/F  
LILES FAMILY LLC  
PIN: 1783.00-90-5147  
DB 3304, PG 178

N/F  
LILES FAMILY LLC  
PIN: 1783.00-90-5147  
DB 3304, PG 178

JIMMIE TEMPLE  
PIN: 1793.03-02-5880(WAKE)  
1793.03-01-2410(JOHNSTON)  
DB 5030, PG 558

