



CORPORATE HEADQUARTERS & FINANCIAL SERVICES

MARKET OVERVIEW



YORK COUNTY

ECONOMIC DEVELOPMENT
SOUTH CAROLINA



THE LOCATION YOU NEED. THE LIFE YOU WANT.

Just ask the people who live and work here — tech-savvy and young professionals alike — they are attracted to York County's combination of lifestyle and economic opportunity.

With less than a **30 minute** drive to the **Charlotte Douglas International Airport**, ranked among the top ten busiest airports in the world, York County has easy access to direct flights connecting you to almost anywhere in the world. And the word is out.

Just as York County's **population is growing**, so is its available workforce. Employers can expect to draw the majority of their workers within a 45 minute drive, which includes most of the Charlotte metro area. In fact, York County's **job growth** over the next 10 years is expected to be 20%, a strong number that reflects its strategic position as home to many highly recognized new and expanding companies.

York County's **ideal location**, bordering the two Carolinas, helps to bring talent from major universities and colleges across both states. And as Charlotte's southern neighbor, York County provides an adventurous and affordable environment, known for its hospitality and **award winning** outdoor recreation. With great places to live, work and raise a family, the choices are many, attracting a talented and diverse workforce that tends to stick around.

It's clear then why so many companies have chosen to make York County their home. With access to major metropolitan Charlotte at their fingertips, our growing list of top companies can and will continue to enjoy the many assets that make York County distinct.

SOUTH CAROLINA

3RD

TOP STATES
FOR
DOING BUSINESS

2ND

BUSINESS
INCENTIVES
PROGRAMS

3RD

WORKFORCE
DEVELOPMENT
PROGRAMS

#6

TOP 20 BEST
TECH CITIES FOR
IT JOBS¹

#3

FOR BEST
BUSINESS CLIMATE²

2ND

LARGEST
BANKING CENTER
IN THE U.S.

Area Development Magazine, Top States for Doing Business - 2022

1. Comptia Tech Town Index 2022
2. Business Facilities - 2022 Metro & Global Rankings Report



LPL Financial, Fort Mill, SC

WORKFORCE

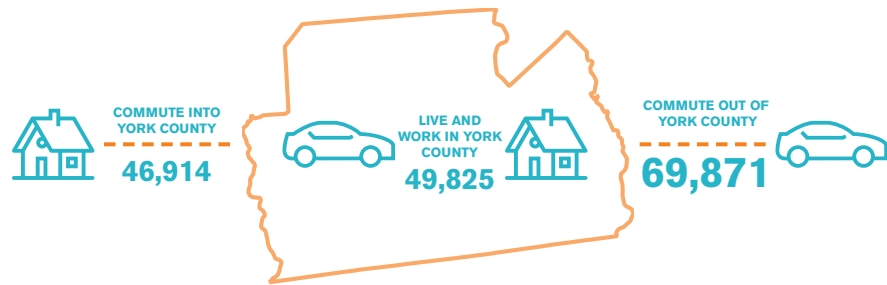


CAPTURING EXISTING TALENT

An outbound commuter study conducted by Winthrop University found that nearly **70,000 residents** commute out of York County each day for work – the vast majority traveling across the state line into Charlotte. These workers are employed in everything from Information Technology to Finance, many holding management positions and possessing the **skills** that today’s employers are seeking.

When asked, the overwhelming majority said they would stay closer to their home for similar or equal pay. In fact, based on the study, 61% or over **36,000 workers** were willing to switch jobs if a similar opportunity were made available closer to home in York County.

YORK COUNTY COMMUTING PATTERNS



GROWTH AND OPPORTUNITY

As part of the Charlotte region, York County has seen considerable **population growth** during the past few decades. According to U.S. Census data, the number of residents calling York County home **has increased by 25% or more in three of the last four decades** — with the growth rate in the most recent decade coming in closer to 27%.

Just as York County’s population is growing, so is its available workforce. Employers can expect to draw the **majority** of their workforce from a **45 minute drive time** radius around their operations, which includes a large portion of the Charlotte metro area.

With 1.2 million workers in the Labor Shed and growing, York County’s workforce is steady, **skilled and strong**.

LABOR FORCE STATISTICS	YORK COUNTY	LABOR SHED
Total Population ¹	294,248	2,269,878
Civilian Population +16 ²	143,064	1,209,699
Employed ³	130,058	1,130,800
Unemployment Rate ³	3.2%	3.5%

Source: Chmura JobsEQ:
1. U.S. Census 2022 estimates
2. American Community Survey 2016–2020
3. Bureau of Labor Statistics, LAUS; 2022, Not seasonally adjusted

Source: US Census Bureau, On the Map 2020, Inflow/Outflow Analysis: All Primary Jobs

WORKFORCE

45,000+

CORE TECH WORKERS IN LABOR SHED

LPL Financial, Fort Mill, SC

SOME OF THE BEST AND THE BRIGHTEST

An ambitious labor pool expecting new challenges and eager to build sustainable work lives awaits employers who commit to York County. With a high concentration of talent in Information Technology, Data Science and Finance Professionals alike, York County draws a unique and diverse mix of talent. tech-savvy, committed, and motivated for the future.

REGIONALLY SIGNIFICANT CORPORATE & FINANCIAL SERVICE OCCUPATIONS*

SOC	OCCUPATION*	EMPLOYMENT	LQ
13-2054	Financial Risk Specialists	1,385	3.07
13-2041	Credit Analysts	1,439	2.68
43-4131	Loan Interviewers and Clerks	4,813	2.60
13-2052	Personal Financial Advisors	6,514	2.60
13-2072	Loan Officers	6,902	2.54

Source: Chmura Economics, JobsEQ®; York County Labor Shed. Primary & secondary sectors as defined in Appendix.
Data as of 2022 Q3; Based on a four-quarter moving average. Private Sector only.
*Note: Occupation groups analyzed: Management, Business & Financial Operations, Computer & Mathematical, Sales & Related, Office & Administrative.

FASTEST GROWING CORPORATE & FINANCIAL SERVICE OCCUPATIONS*

SOC CODE	OCCUPATION DATA, LATEST AVAILABLE DATA**	YORK LABOR SHED	CHARLOTTE MSA	USA
13-2051	Financial and Investment Analysts	172%	132%	105%
13-2054	Financial Risk Specialists	161%	147%	107%
15-1243	Database Architects	147%	110%	113%
15-2051	Data Scientists	143%	111%	110%
15-1252	Software Developers	139%	119%	121%

Source: Chmura Economics, JobsEQ®
Data as of 2022 Q3; Demand data reflect place-of-work employment
** Note: Data represents a five-year historical employment percent change

WORKFORCE

In addition to a trained workforce, another invaluable component of the Corporate & Financial Service growth in York County is its competitive wages. The following table details employment and wages for the fifteen occupations* projected to have highest demand from Corporate & Financial Service operations, based on national employment trends. The occupation with the highest projected demand is listed first and then ranked accordingly.

RANK	SOC CODE	OCCUPATION*	YORK COUNTY LABOR SHED			LABOR SHED MEAN WAGE	COMPARED TO U.S. MEAN
			EMPLOYED ¹	ENTRY-LEVEL WAGE	EXPERIENCED-LEVEL WAGE ²		
1	43-4051	Customer Service Representatives	28,356	\$27,900	\$49,200	\$42,100	7.4%
2	15-1252	Software Developers	15,895	\$90,600	\$147,500	\$128,500	8.9%
3	11-1021	General and Operations Managers	24,971	\$57,400	\$165,600	\$129,500	4.0%
4	13-2011	Accountants and Auditors	13,258	\$57,800	\$119,800	\$99,100	14.4%
5	41-3091	Sales Representatives of Services, Except Advertising, Insurance, Financial Services, and Travel	10,061	\$35,600	\$103,500	\$80,800	9.9%
6	13-1111	Management Analysts	8,398	\$63,700	\$134,800	\$111,100	8.6%
7	43-3031	Bookkeeping, Accounting, and Auditing Clerks	15,292	\$34,000	\$52,300	\$46,200	1.7%
8	43-9061	Office Clerks, General	22,444	\$27,400	\$47,600	\$40,900	4.0%
9	13-1161	Market Research Analysts and Marketing Specialists	7,554	\$44,900	\$94,600	\$78,100	0.8%
10	41-3021	Insurance Sales Agents	5,032	\$35,000	\$91,500	\$72,700	4.6%
11	43-1011	First-Line Supervisors of Office and Administrative Support Workers	13,916	\$43,900	\$77,600	\$66,400	0.3%
12	13-1199	Business Operations Specialists, All Other	8,056	\$44,200	\$101,100	\$82,100	3.1%
13	43-6014	Secretaries and Administrative Assistants, Except Legal, Medical, and Executive	14,135	\$33,500	\$48,700	\$43,600	2.1%
14	11-3031	Financial Managers	6,014	\$115,400	\$222,000	\$186,500	16.0%
15	15-1232	Computer User Support Specialists	6,425	\$34,800	\$71,500	\$59,300	2.9%

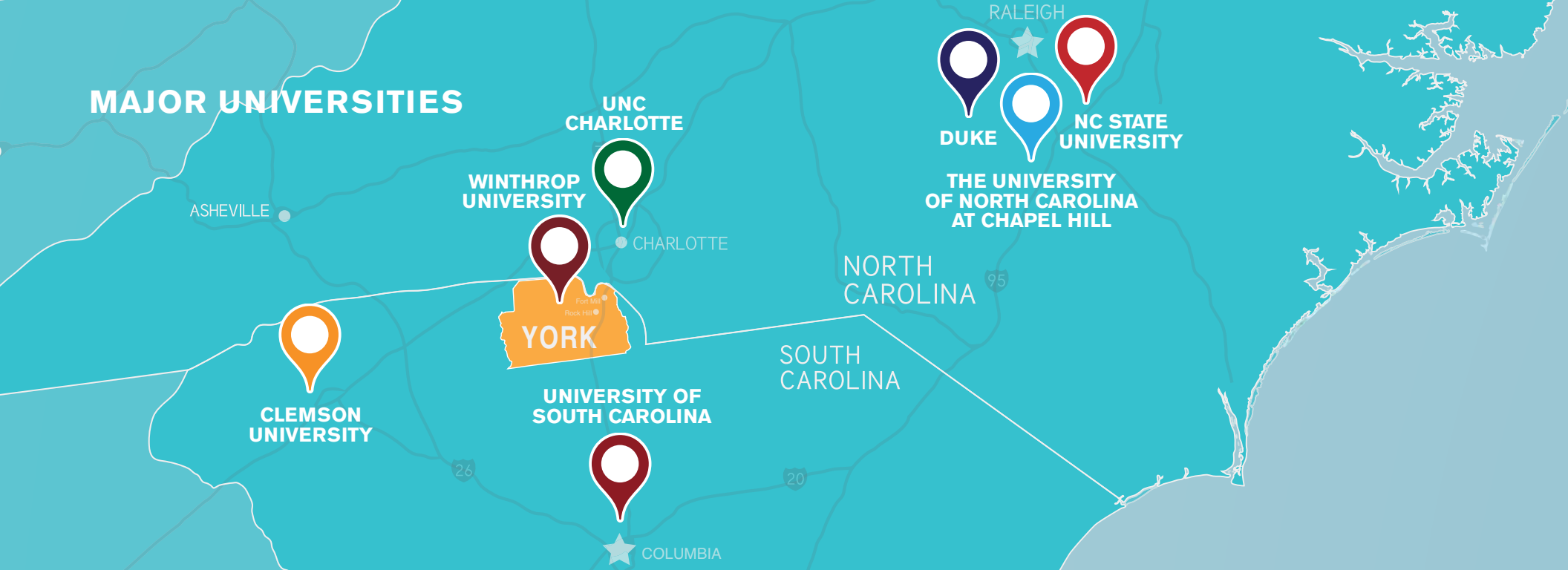
LQ BETWEEN 0.90 AND 1.24
LQ AT OR ABOVE 1.25

Source: Chmura Economics, JobsEQ®
*Note: Occupation groups analyzed: Management, Business & Financial Operations, Computer & Mathematical, Sales & Related, Office & Administrative
1. Employment data represent a four-quarter moving average as of 2022 Q3
2. Wage data are as of 2022 Q3 and represent the average for all Covered Employment

HIGHER EDUCATION



Darla Moore School of Business, University of South Carolina



CHOICES. CHOICES. CHOICES.

York County's ideal location, in a major metropolitan city like Charlotte, helps to bring talent from major universities and colleges across North and South Carolina. With numerous research universities and technical colleges for students to choose from, these institutions consistently feed the labor force, providing new talent in addition to the existing, trained workforce.

TECH ALUMNI FROM REGIONAL UNIVERSITIES

COLLEGE OR UNIVERSITY	ESTIMATED PROFESSIONALS	LOCATION
University of North Carolina at Charlotte	10,903	Charlotte, NC
Central Piedmont Community College	4,065	Charlotte, NC
North Carolina State University	2,488	Raleigh, NC
Appalachian State University	1,513	Boone, NC

COLLEGE OR UNIVERSITY	ESTIMATED PROFESSIONALS	LOCATION
Clemson University	1,363	Clemson, SC
University of South Carolina	1,247	Columbia, SC
University of North Carolina at Chapel Hill	1,126	Chapel Hill, NC
York Technical College	948	Rock Hill, SC
East Carolina University	896	Greenville, NC
Winthrop University	829	Rock Hill, SC
Gaston College	800	Dallas, NC
Rowan-Cabarrus Community College	793	Salisbury, NC
Virginia Tech	722	Blacksburg, VA

Source: Charlotte Regional Business Alliance, LinkedIn 2023



HIGHER EDUCATION



Winthrop University, Rock Hill, SC

IN OUR OWN BACKYARD

Winthrop University offers bachelor's and master's degrees through both on-campus and online programs. Their **historic** and scenic campus is located in Rock Hill, just 30 minutes south of Charlotte. With a tradition in high caliber academics, championship athletics, and student-centered achievements, Winthrop creates a campus community that is known for its **diversity, excellence, and family atmosphere**.

“The mission of the College of Business Administration at Winthrop University is to provide a transformative education. We achieve our mission through state-of-the art curriculum, co-curricular activities, in-demand degrees, and opportunities for experiential learning and employment with leading industry partners in York County, and beyond.”

— P.N. Saksena, Dean of the College of Business

#18
**TOP REGIONAL
UNIVERSITY IN THE SOUTH**
2022

#6
**BEST COLLEGE
FOR VETERANS**
2022

Source: U.S. News & World Report

HIGHER EDUCATION — CORPORATE AND FINANCIAL SERVICE DEGREES*

The following table details the 2020–2021 higher-education graduates for programs that align with occupations demanded by Corporate & Financial Service operations, based on national hiring trends.

CIP CODE	PROGRAM	CERTIFICATES OR 2-YEAR DEGREE	BACHELOR'S DEGREE	POST-BACHELOR'S DEGREE	TOTAL AWARDS
52.0201	Business Administration and Management, General	569	643	439	1,651
11.0701	Computer Science	0	678	247	925
11.0103	Information Technology	322	102	75	499
52.0801	Finance, General	0	413	0	413
52.0301	Accounting	79	227	93	399
52.1401	Marketing/Marketing Management, General	0	249	0	249
52.0204	Office Management and Supervision	202	0	0	202
52.0304	Accounting and Finance	138	3	1	142
45.0603	Econometrics and Quantitative Economics	0	87	18	105
52.1399	Management Sciences and Quantitative Methods, Other	0	14	81	95
	TOTAL FOR TOP TEN PROGRAMS	1,310	2,416	954	4,680
	TOTAL FOR PROGRAMS RELATED TO CORPORATE AND FINANCIAL SERVICE¹	1,844	4,653	1,563	8,060

TOTAL HIGHER EDUCATION STUDENT POPULATION

YORK COUNTY ENROLLMENT

10,034

GRADUATES — 2,951

(2 FOUR YEAR SCHOOLS AND
1 TECHNICAL COLLEGE)

YORK COUNTY EXTENDED REGION*

+ 70,786

GRADUATES — 20,659

(4 TWO YEAR SCHOOLS,
14 FOUR YEAR SCHOOLS AND
1 TECHNICAL COLLEGE)

TOTAL STUDENT POPULATION

= 80,820

TOTAL GRADUATES — 23,610

Source: JobsEQ®

*Note: Awards data for occupations represent awards related to the occupation. Since an award is often related to multiple occupations, awards by occupation data should not be expected to sum

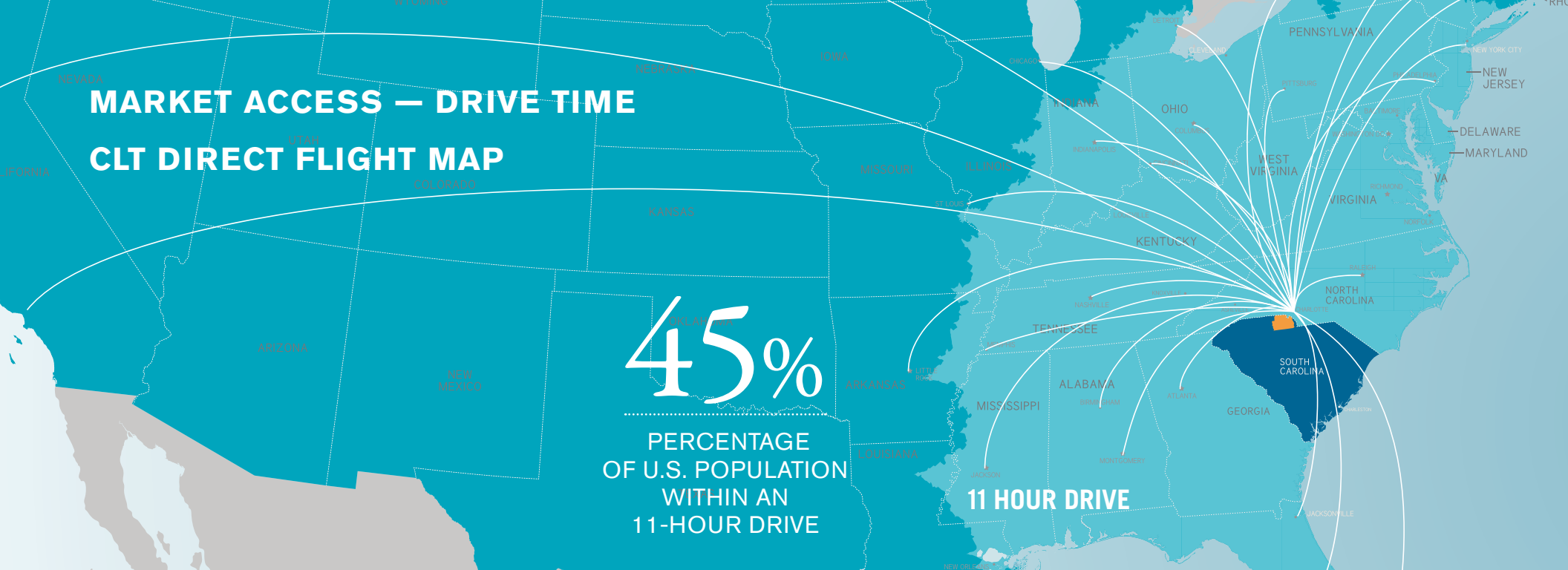
*Note: Awards and enrollment are for the academic year listed. The academic year ends in the spring semester of the displayed year. Data as of 2021

1. Occupation groups analyzed: Management, Business/Financial Operations, Computer/Mathematical, Non-retail Sales, and Office/Admin Support

MARKET ACCESS



Charlotte Douglas International Airport



THE LOCATION YOU NEED

With less than a 30-minute drive to the **Charlotte Douglas International Airport**, ranked among the top ten busiest airports in the world, York County has easy access to **direct flights** connecting you to almost anywhere in the world.

Locally, the Rock Hill/York County Airport is the major business and industrial airport serving the area. With a runway length of 5,500 feet, the airport provides **corporate** and airfreight service on demand.

Infrastructure upgrades to support new and expanding businesses, as well as the people who live and work here are a priority in York County. Many **significant investments** have been made across the region, including I-77, which has been widened and improved over the years, making drive times and **connections** to major cities such as Charlotte, Atlanta and Raleigh seamless.



LIST OF CLT INTERNATIONAL AND SELECTED DESTINATIONS

London, England	Cancun, Mexico
Madrid, Spain	Bermuda
Munich, Germany	Nassau, Bahamas
Frankfurt, Germany	New York, NY
Paris, France*	Miami, FL
Toronto, Canada	San Francisco, CA
Dublin, Ireland	Houston, TX
Mexico City, Mexico	Seattle, WA
Montreal, Canada	Denver, CO
Belize City, Belize	Chicago, IL
San Jose, Costa Rica	700 + Additional Locations

Source: Charlotte Douglas International Airport
*Seasonal Destination

ROCK HILL/YORK COUNTY AIRPORT (UZA)

Runway Length	1 mile+ (5,500 ft)
Runway Length - Planned Expansion	6,555 ft
General Aviation Airport	No Delays
Reliever Airport for Charlotte Douglas International	No Landing Fees
Terminal Building	8,400 SF
Taxi, Car Rental, Limousine Services, Pilot Lounge	Amenities Available
Fixed-Base Operator (FBO)	Skytech
Annual Aircraft Jet Operations* (July 2019 – July 2020)	2,189
Total Employment	224 Jobs
Annual Payroll	\$10 million
Annual Spending	\$30.6 million
Total Annual Economic Activity	\$40.5 million

*Takeoff/Landing (observed between 7am-8pm)

MAJOR CORPORATE EMPLOYERS



Kingsley, Fort Mill, SC



Charlotte, NC

AND THE LIST GOES ON

With a robust quality of life and a diverse, savvy, and talented workforce, it's no wonder so many companies have chosen to make York County their home. With access to a major international airport at their fingertips, York County's **growing list of top companies** enjoy all of the benefits of a **major metropolitan market with a suburban feel**.

“Our decision to move our corporate headquarters and establish our high-volume manufacturing facility to York County, South Carolina, was one made with much thought. We wanted to locate to a community that aligned with our innovative spirit and attracted the technology talent we need to grow our new semiconductor silicon carbide wafer production.

We found all of these assets and more in our Rock Hill location. This community offers an exceptional quality of life for our employees, while also being easily supported from our state of art research and development facility in New York. We look forward to years of growth here in York County.”

York County's economic strengths in industry sectors from finance to 3D printing, there is no doubt that innovative, fast-moving companies are finding just what they need right here. Startups and Fortune 1,000 enterprises alike have staked claims in York County, marking it as a **hot spot for economic growth** for years to come.



—Jerry Knowles, Pallidus Vice President, Global Facilities

HEADQUARTERS (GLOBAL, NATIONAL, REGIONAL)

YORK COUNTY

3D SYSTEMS
ATLAS COPCO
DIVERSEY
DOMTAR
LPL FINANCIAL
SCHAEFFLER GROUP
SUNBELT RENTALS
PALLIDUS
STIWA

CHARLOTTE METRO

BANK OF AMERICA
LOWE'S
HONEYWELL
DUKE ENERGY
NUCOR
TRUIST FINANCIAL
SONIC AUTOMOTIVE
BRIGHOUSE FINANCIAL
SEALED AIR

CORPORATE & FINANCIAL SERVICES

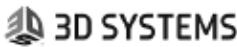
YORK COUNTY

LASH GROUP/AMERISOURCEBERGEN
LPL FINANCIAL
LONDON STOCK EXCHANGE
ONEMAIN HOLDINGS
ROUNDPOINT MORTGAGE
WELLS FARGO HOME MORTGAGE
WILLIAMS & FUDGE, INC.

CHARLOTTE METRO

BANK OF AMERICA
WELLS FARGO
TRUIST FINANCIAL
BRIGHOUSE FINANCIAL
CENTENE
LENDINGTREE
AVIDXCHANGE
SERVICEMAC
ALLSTATE
AXA

YORK COUNTY COMPANIES



QUALITY OF LIFE

#2

2022 HEALTHIEST COUNTY IN SC
Source: University of Wisconsin

Anne Springs Close Greenway, Fort Mill, SC

DIVERSE K-12 OFFERINGS

FORT MILL
SCHOOL DISTRICT

#1

BEST SCHOOL
DISTRICT IN STATE

#2

DISTRICT WITH THE
BEST TEACHERS

ROCK HILL
SCHOOL DISTRICT

#6

BEST SCHOOL
DISTRICTS FOR
ATHLETES

#7

MOST DIVERSE
DISTRICT
IN THE STATE

CLOVER SCHOOL
DISTRICT

#4

BEST SCHOOL
DISTRICT IN STATE

Source: Niche.com

THE LIFE YOU WANT

York County, Charlotte's Southern Neighbor is adventurous and affordable, offering **big-city amenities** in a warm, friendly environment known for its hospitality and award winning outdoor adventure. With great places to live, work and raise a family, the **choices are many.**

Relax and enjoy. The Catawba River and the inviting waters of Lake Wylie provide paddling, boating, floating and fishing adventures. With over 2,100 acres, the Anne Springs Close Greenway is one of the **region's largest nature preserves** with abundant places to picnic, hike and mountain bike.

Want to compete? Bikers can participate in nationally sanctioned races at the Giordana Velodrome and BMX Supercross Track at Riverwalk, part of a robust amateur sports scene in Rock Hill, anchored by Cherry Park and the downtown Indoor Sports and Events Center. And if a day on the greens is your sport

of choice, York County's mild weather makes year round golfing accessible, offering numerous challenging courses across the county.

While nearby Charlotte offers professional sports – including the NBA's Hornets and the NFL's Carolina Panthers, and Major League Soccer's (MLS) newest team, Charlotte FC. York County's proximity to both the beach and the mountains can make a quick day trip a new adventure.

Families enjoy the best in public education, as York County's four public school districts consistently rank as some of the most **highly respected elementary, middle and high schools in the state and the Charlotte region.**

So whether it's great food and beverage, outstanding outdoor recreation and education, or ease of access in connecting with nature, we have it all right here.

K-12 PUBLIC SCHOOLS

DISTRICT	ENROLLMENT	GRADUATION RATE	*STUDENT TEACHER RATIO IN CORE SUBJECTS
Fort Mill	17,868	96.6%	23.1:1
Rock Hill	16,880	83.0%	22.4:1
Clover	8,831	95.8%	24:1
York	5,007	84.3%	22.5:1

Source: SC Department of Education. Data for 2021–2022 Academic Year
<https://scoreportcards.ed.sc.gov/>
* Data from Niche.com

PRIVATE EDUCATION CHOICES

Ranked as some of the best in South Carolina, there are more than **7 private schools** in York County, South Carolina, serving over 1,440 students.

More than 57% of these private schools are religiously affiliated. Minority enrollment stands at around 12%, with a student:teacher ratio of 8:1.

Producing top graduates who go on to earn significant academic and athletic scholarships towards college, many of these private schools offer a wide array of extracurricular activities to include multiple sports offerings, as well arts, music and theatre programs to name a few.

HOUSING

BEST PLACE TO
RAISE A FAMILY IN SC

#1 **#2**

TEGA CAY

FORT MILL

Source: Niche

Baxter Village, Fort Mill, SC

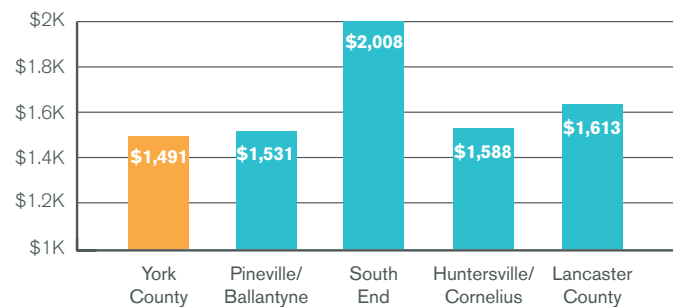
CORPORATE REAL ESTATE

RoundPoint Mortgage, Fort Mill, SC; Photo Credit: Gensler Architecture & Halkin Mason Photography

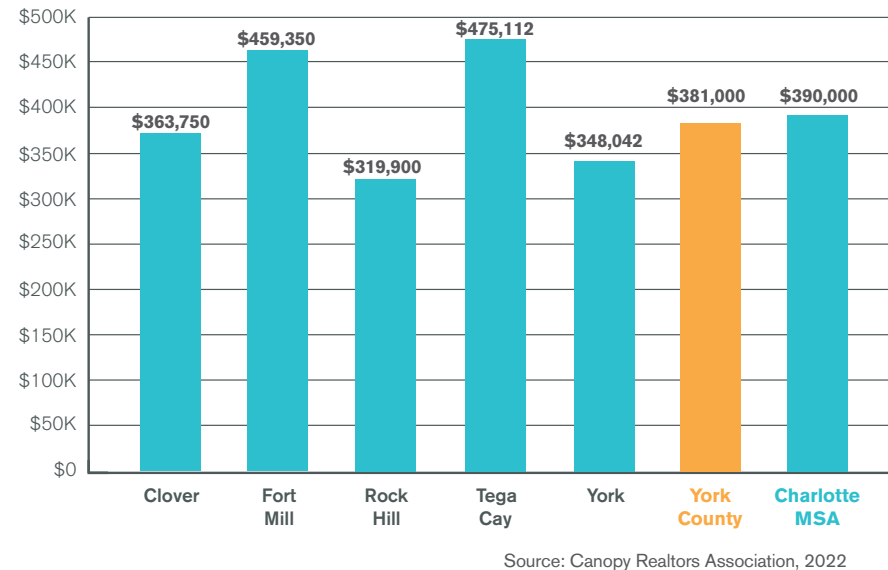
A HOME FOR ALL

When it comes to housing, York County offers a **choice** for every budget and lifestyle. From workforce housing to lake living, and everything in between, selection is priced **below** comparable markets. With suburban neighborhoods to charming small towns, rural farmlife to up-and-coming downtowns, it is no surprise why so many choose to call York County **home**.

MULTI-FAMILY HOUSING (AVERAGE RENT)



SINGLE FAMILY HOUSING (MEDIAN SALES PRICE)

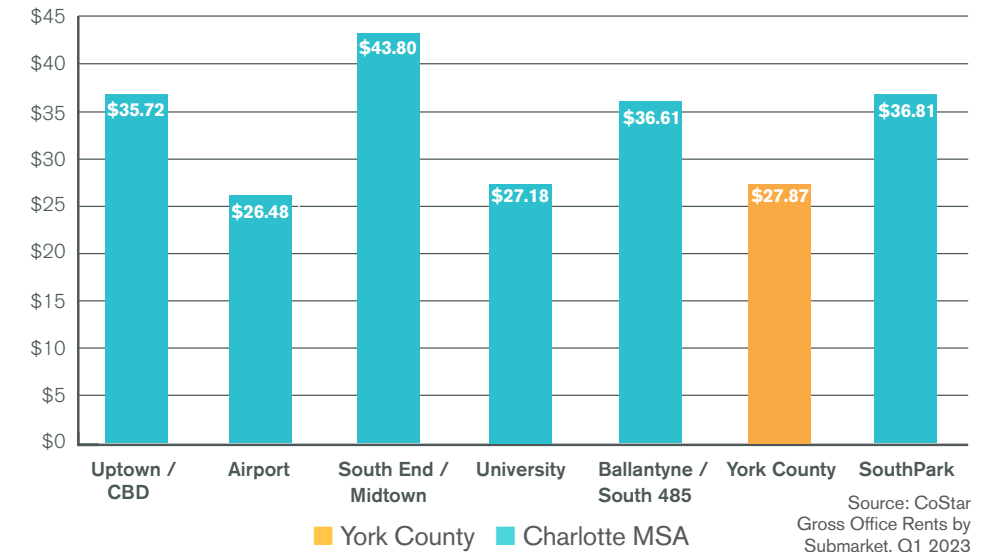


YORK COUNTY OFFICE MARKET

The trend continues with York County's emerging commercial real estate market. An active, growing marketplace, featuring the **second highest concentration of Class A office space (by county)** in the Charlotte metro, offers rents below the market average and significantly lower than Charlotte's other trendy Class A office submarkets.



OFFICE MARKET RENT PER SF



TELECOMMUNICATIONS



3RD

LARGEST BROADBAND PROVIDER IN THE SOUTHEAST

13TH

LARGEST TELECOM PROVIDER IN THE US

125

YEARS IN BUSINESS

WORKFORCE DEVELOPMENT RESOURCES

KEEPING YOU CONNECTED

With a variety of telecommunication and data service providers available to companies in York County, most need look no further than Comporium for their service needs. This telecommunications leader got its start in York County more than 125 years ago. They offer a diverse and technologically rich suite of business products. As one of the largest telecom providers in the nation, they support businesses with solutions that include voice, internet, data, wireless, structured wiring and cabling, security, computer network service, and digital cable TV.

YORK COUNTY TELECOMMUNICATIONS SERVICE PROVIDERS

Comporium | AT&T | Time Warner | Spectrum | Sprint

TELECOMMUNICATIONS SERVICES PROVIDED THROUGHOUT YORK COUNTY

- | | | |
|--|---|--|
| 24/7/365 Monitoring | Dedicated & Scalable up to 100 Gbps | Point-to-point/Multi-point connections |
| Access Control | Enterprise PBX Solutions | Powered by Alarm.com |
| Broadband Internet Access | Geographic Fiber Route Diversity | Redundant connection capabilities |
| Broadband up to 1 Gbps via fiber | Industry-Leading Products and Services | SIP Trunking |
| Business Ethernet Services | Long Distance | Security |
| Comporium Cloud Voice Solutions | PRI Solutions | Video Surveillance |
| Comporium Teams Voice powered by Microsoft | | Voice Unified VoIP Communications |

CUSTOMIZED SOLUTIONS FOR EVERY COMPANY

Workforce solutions are never a “one size fits all approach”, and we recognize that. Which is why our partners across the state dig in to each company's needs before offering a solution.



READYSC™ WORKFORCE TRAINING

For more than 50 years, the readySC™ workforce training program has provided customized recruiting and training solutions to companies bringing new jobs to the state through relocation or expansion. readySC™ will work with the company to deliver a tailored curriculum with our instructors or yours to meet the training needs of the company. No matter the industry or size, readySC™ is prepared to support a company's specific needs.



SOUTH CAROLINA TECHNICAL COLLEGE SYSTEM

Apprenticeship Carolina™, a division of the SC Technical College System, works to ensure all employers in South Carolina have access to the information and technical assistance they need to create demand-driven registered apprenticeship programs. At no cost to the employer, apprenticeship consultants are available to guide companies through the registered apprenticeship development process from initial information to full recognition in the national Registered Apprenticeship System.

APPENDIX – INDUSTRY CLASSIFICATION

The North American Industry Classification System (NAICS) is the standard six-digit categorization code used by Federal statistical agencies in classifying business establishments for collecting, analyzing, and publishing statistical data related to the U.S. business economy. The following NAICS codes were collectively used to define the cluster in order to collect, aggregate, and analyze industry and workforce data.

PRIMARY INDUSTRIES — CORPORATE & FINANCIAL SERVICE COMPANIES

NAICS	TITLE	NAICS	TITLE
521110	Monetary Authorities-Central Bank	525	Funds, Trusts, and Other Financial Vehicles
5222	Nondepository Credit Intermediation	5412	Accounting, Tax Preparation, Bookkeeping, and Payroll Services
5223	Activities Related to Credit Intermediation	55	Management of Companies and Enterprises
5231	Securities and Commodity Contracts Intermediation and Brokerage	561330	Professional Employer Organizations
523210	Securities and Commodity Exchanges	561440	Collection Agencies
5239	Other Financial Investment Activities	561450	Credit Bureaus
524	Insurance Carriers and Related Activities		

SECONDARY INDUSTRIES — COMPANIES PRIMARILY ENGAGED IN ADDING VALUE TO OR CREATING NEW PRODUCTS FROM CORPORATE & FINANCIAL SERVICES

NAICS	TITLE	NAICS	TITLE
513210	Software Publishers	541910	Marketing Research and Public Opinion Polling
516210	Media Streaming Distribution Services, Social Networks, and Other Media Networks and Content Providers	541930	Translation and Interpretation Services
517	Telecommunications	541990	All Other Professional, Scientific, and Technical Services
518210	Computing Infrastructure Providers, Data Processing, Web hosting and Related Services	561110	Office Administrative Services
519130	Internet Publishing and Broadcasting and Web Search Portals	561210	Facilities Support Services
519190	All Other Information Services	561311	Employment Placement Agencies
532420	Office Machinery and Equipment Rental and Leasing	561312	Executive Search Services
5415	Computer Systems Design and Related Services	561410	Document Preparation Services
541611	Administrative Management and General Management Consulting Services	561421	Telephone Answering Services
541612	Human Resources Consulting Services	561422	Telemarketing Bureaus and Other Contact Centers
541613	Marketing Consulting Services	561431	Private Mail Centers
541614	Process, Physical Distribution, and Logistics Consulting Services	561499	All Other Business Support Services
541618	Other Management Consulting Services	813910	Business Associations
5418	Advertising, Public Relations, and Related Services	813920	Professional Organizations
		813930	Labor Unions and Similar Labor Organizations



As one of the most iconic buildings within the Charlotte region, the Thread transforms 400,000 square feet of historic textile mill and warehouse space into an exciting one-of-a-kind adaptive reuse development. Located in the heart in Rock Hill’s Knowledge Park district, the Thread will seamlessly weave together and connect Old Town Rock Hill with Winthrop University, creatively positioning it as a destination for the community to come together to eat, shop, work, live and play.

The Thread, Rock Hill, SC



YORK COUNTY

ECONOMIC DEVELOPMENT
SOUTH CAROLINA

The Location You Need. The Life You Want.

www.yorkcountyed.com | 803.802.4300

