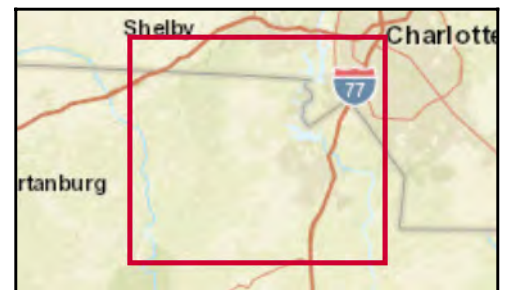
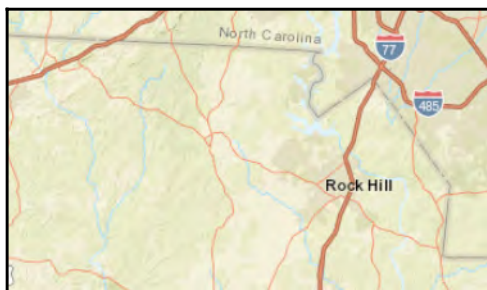
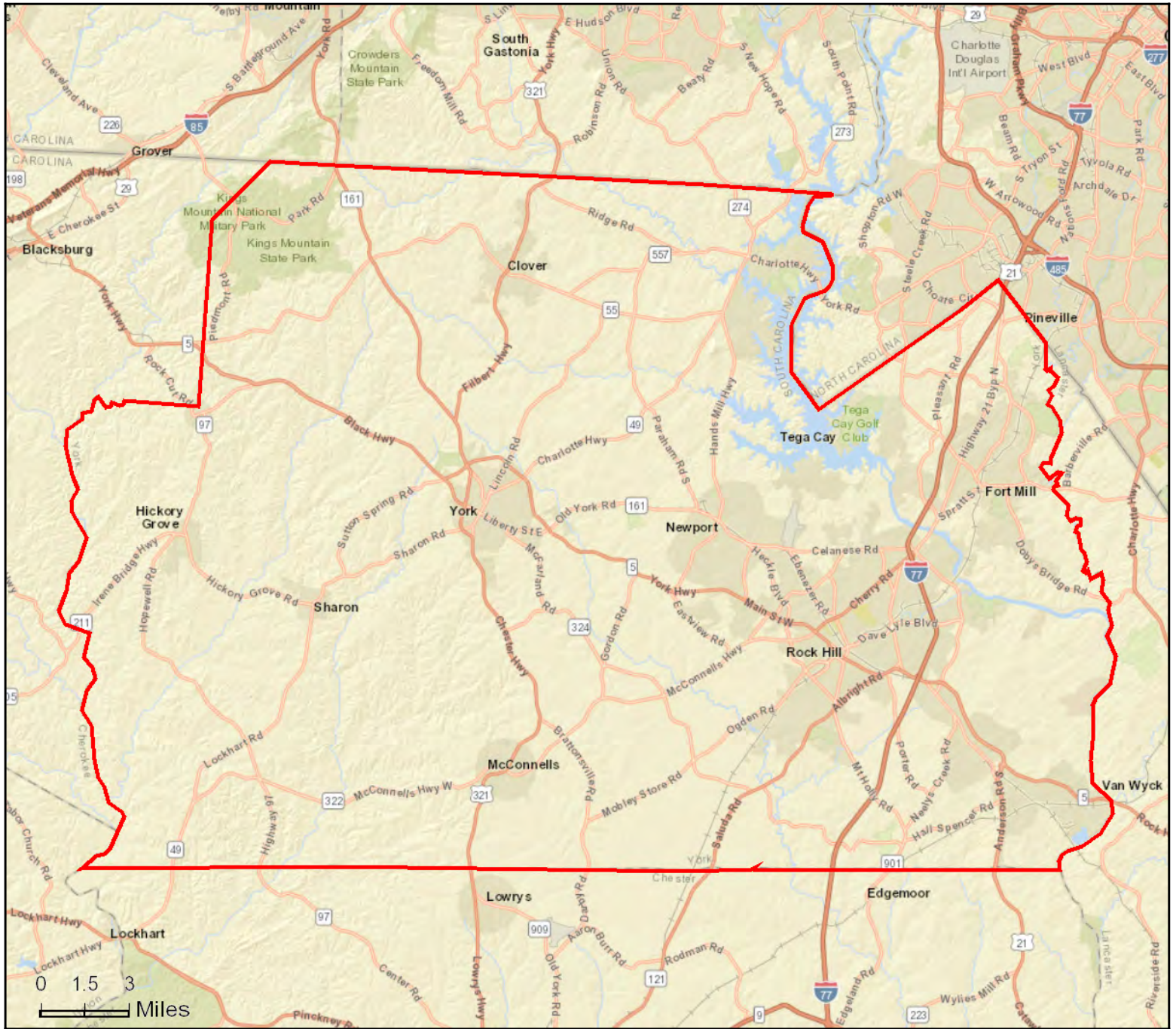


Site Map

York County, SC
 York County, SC (45091)
 Geography: County

Prepared by York County Economic



	York County, ...
Population Summary	
2000 Total Population	164,614
2010 Total Population	226,073
2018 Total Population	267,497
2018 Group Quarters	3,956
2023 Total Population	297,008
2018-2023 Annual Rate	2.12%
2018 Total Daytime Population	245,476
Workers	105,157
Residents	140,319
Household Summary	
2000 Households	61,051
2000 Average Household Size	2.63
2010 Households	85,864
2010 Average Household Size	2.59
2018 Households	101,385
2018 Average Household Size	2.60
2023 Households	112,536
2023 Average Household Size	2.60
2018-2023 Annual Rate	2.11%
2010 Families	61,089
2010 Average Family Size	3.06
2018 Families	71,080
2018 Average Family Size	3.11
2023 Families	78,457
2023 Average Family Size	3.13
2018-2023 Annual Rate	1.99%
Housing Unit Summary	
2000 Housing Units	66,061
Owner Occupied Housing Units	67.6%
Renter Occupied Housing Units	24.9%
Vacant Housing Units	7.6%
2010 Housing Units	94,196
Owner Occupied Housing Units	65.9%
Renter Occupied Housing Units	25.2%
Vacant Housing Units	8.8%
2018 Housing Units	110,566
Owner Occupied Housing Units	66.1%
Renter Occupied Housing Units	25.5%
Vacant Housing Units	8.3%
2023 Housing Units	122,422
Owner Occupied Housing Units	66.9%
Renter Occupied Housing Units	25.0%
Vacant Housing Units	8.1%
Median Household Income	
2018	\$61,510
2023	\$71,629
Median Home Value	
2018	\$193,543
2023	\$222,974
Per Capita Income	
2018	\$31,486
2023	\$35,922
Median Age	
2010	37.1
2018	38.4
2023	38.8

Data Note: Household population includes persons not residing in group quarters. Average Household Size is the household population divided by total households. Persons in families include the householder and persons related to the householder by birth, marriage, or adoption. Per Capita Income represents the income received by all persons aged 15 years and over divided by the total population.

Source: U.S. Census Bureau, Census 2010 Summary File 1. Esri forecasts for 2018 and 2023 Esri converted Census 2000 data into 2010 geography.

	York County, ...
2018 Households by Income	
Household Income Base	101,384
<\$15,000	10.4%
\$15,000 - \$24,999	7.7%
\$25,000 - \$34,999	9.1%
\$35,000 - \$49,999	13.1%
\$50,000 - \$74,999	17.6%
\$75,000 - \$99,999	13.4%
\$100,000 - \$149,999	16.8%
\$150,000 - \$199,999	6.6%
\$200,000+	5.4%
Average Household Income	\$82,486
2023 Households by Income	
Household Income Base	112,535
<\$15,000	8.5%
\$15,000 - \$24,999	6.3%
\$25,000 - \$34,999	7.8%
\$35,000 - \$49,999	11.9%
\$50,000 - \$74,999	17.2%
\$75,000 - \$99,999	14.3%
\$100,000 - \$149,999	20.0%
\$150,000 - \$199,999	7.3%
\$200,000+	6.6%
Average Household Income	\$94,276
2018 Owner Occupied Housing Units by Value	
Total	73,139
<\$50,000	6.0%
\$50,000 - \$99,999	10.9%
\$100,000 - \$149,999	17.2%
\$150,000 - \$199,999	18.2%
\$200,000 - \$249,999	13.4%
\$250,000 - \$299,999	9.5%
\$300,000 - \$399,999	12.3%
\$400,000 - \$499,999	6.0%
\$500,000 - \$749,999	4.4%
\$750,000 - \$999,999	1.0%
\$1,000,000 - \$1,499,999	0.8%
\$1,500,000 - \$1,999,999	0.1%
\$2,000,000 +	0.3%
Average Home Value	\$243,275
2023 Owner Occupied Housing Units by Value	
Total	81,881
<\$50,000	4.6%
\$50,000 - \$99,999	8.5%
\$100,000 - \$149,999	13.6%
\$150,000 - \$199,999	17.1%
\$200,000 - \$249,999	13.6%
\$250,000 - \$299,999	10.8%
\$300,000 - \$399,999	15.8%
\$400,000 - \$499,999	8.1%
\$500,000 - \$749,999	5.6%
\$750,000 - \$999,999	1.1%
\$1,000,000 - \$1,499,999	0.8%
\$1,500,000 - \$1,999,999	0.1%
\$2,000,000 +	0.4%
Average Home Value	\$270,462

Data Note: Income represents the preceding year, expressed in current dollars. Household income includes wage and salary earnings, interest dividends, net rents, pensions, SSI and welfare payments, child support, and alimony.

Source: U.S. Census Bureau, Census 2010 Summary File 1. Esri forecasts for 2018 and 2023 Esri converted Census 2000 data into 2010 geography.

	York County, ...
2010 Population by Age	
Total	226,073
0 - 4	6.9%
5 - 9	7.2%
10 - 14	7.2%
15 - 24	13.4%
25 - 34	12.3%
35 - 44	14.9%
45 - 54	15.1%
55 - 64	11.7%
65 - 74	6.7%
75 - 84	3.4%
85 +	1.2%
18 +	74.5%
2018 Population by Age	
Total	267,497
0 - 4	6.3%
5 - 9	6.7%
10 - 14	6.9%
15 - 24	13.0%
25 - 34	12.7%
35 - 44	13.0%
45 - 54	14.0%
55 - 64	13.0%
65 - 74	9.1%
75 - 84	3.9%
85 +	1.4%
18 +	76.3%
2023 Population by Age	
Total	297,008
0 - 4	6.2%
5 - 9	6.5%
10 - 14	6.8%
15 - 24	12.5%
25 - 34	12.9%
35 - 44	13.1%
45 - 54	12.8%
55 - 64	12.8%
65 - 74	9.9%
75 - 84	4.9%
85 +	1.4%
18 +	76.5%
2010 Population by Sex	
Males	109,092
Females	116,981
2018 Population by Sex	
Males	129,459
Females	138,038
2023 Population by Sex	
Males	144,081
Females	152,927

Source: U.S. Census Bureau, Census 2010 Summary File 1. Esri forecasts for 2018 and 2023 Esri converted Census 2000 data into 2010 geography.

February 14, 2019

	York County, ...
2010 Population by Race/Ethnicity	
Total	226,073
White Alone	74.8%
Black Alone	19.0%
American Indian Alone	0.9%
Asian Alone	1.5%
Pacific Islander Alone	0.1%
Some Other Race Alone	1.9%
Two or More Races	1.8%
Hispanic Origin	4.5%
Diversity Index	45.4
2018 Population by Race/Ethnicity	
Total	267,497
White Alone	74.0%
Black Alone	18.6%
American Indian Alone	0.7%
Asian Alone	2.0%
Pacific Islander Alone	0.1%
Some Other Race Alone	2.3%
Two or More Races	2.3%
Hispanic Origin	5.5%
Diversity Index	47.8
2023 Population by Race/Ethnicity	
Total	297,008
White Alone	72.6%
Black Alone	18.6%
American Indian Alone	0.7%
Asian Alone	2.5%
Pacific Islander Alone	0.1%
Some Other Race Alone	2.6%
Two or More Races	2.8%
Hispanic Origin	6.3%
Diversity Index	50.4
2010 Population by Relationship and Household Type	
Total	226,073
In Households	98.3%
In Family Households	84.7%
Householder	27.0%
Spouse	20.0%
Child	32.1%
Other relative	3.5%
Nonrelative	2.1%
In Nonfamily Households	13.6%
In Group Quarters	1.7%
Institutionalized Population	0.7%
Noninstitutionalized Population	1.1%

Data Note: Persons of Hispanic Origin may be of any race. The Diversity Index measures the probability that two people from the same area will be from different race/ethnic groups.

Source: U.S. Census Bureau, Census 2010 Summary File 1. Esri forecasts for 2018 and 2023 Esri converted Census 2000 data into 2010 geography.

	York County, ...
2018 Population 25+ by Educational Attainment	
Total	179,485
Less than 9th Grade	3.6%
9th - 12th Grade, No Diploma	7.2%
High School Graduate	22.5%
GED/Alternative Credential	4.1%
Some College, No Degree	21.7%
Associate Degree	10.2%
Bachelor's Degree	20.7%
Graduate/Professional Degree	10.0%
2018 Population 15+ by Marital Status	
Total	214,266
Never Married	29.7%
Married	53.8%
Widowed	5.8%
Divorced	10.7%
2018 Civilian Population 16+ in Labor Force	
Civilian Employed	94.7%
Civilian Unemployed (Unemployment Rate)	5.3%
2018 Employed Population 16+ by Industry	
Total	129,246
Agriculture/Mining	0.6%
Construction	6.4%
Manufacturing	14.0%
Wholesale Trade	3.8%
Retail Trade	11.4%
Transportation/Utilities	6.9%
Information	1.7%
Finance/Insurance/Real Estate	8.0%
Services	44.0%
Public Administration	3.1%
2018 Employed Population 16+ by Occupation	
Total	129,246
White Collar	62.7%
Management/Business/Financial	16.3%
Professional	20.0%
Sales	11.8%
Administrative Support	14.5%
Services	16.1%
Blue Collar	21.2%
Farming/Forestry/Fishing	0.3%
Construction/Extraction	4.6%
Installation/Maintenance/Repair	3.7%
Production	6.7%
Transportation/Material Moving	5.8%
2010 Population By Urban/ Rural Status	
Total Population	226,073
Population Inside Urbanized Area	70.7%
Population Inside Urbanized Cluster	6.4%
Rural Population	23.0%

Source: U.S. Census Bureau, Census 2010 Summary File 1. Esri forecasts for 2018 and 2023 Esri converted Census 2000 data into 2010 geography.

	York County, ...
2010 Households by Type	
Total	85,864
Households with 1 Person	23.5%
Households with 2+ People	76.5%
Family Households	71.1%
Husband-wife Families	52.6%
With Related Children	24.2%
Other Family (No Spouse Present)	18.6%
Other Family with Male Householder	4.6%
With Related Children	2.7%
Other Family with Female Householder	13.9%
With Related Children	9.5%
Nonfamily Households	5.4%
All Households with Children	36.8%
Multigenerational Households	4.3%
Unmarried Partner Households	6.1%
Male-female	5.4%
Same-sex	0.7%
2010 Households by Size	
Total	85,864
1 Person Household	23.5%
2 Person Household	34.0%
3 Person Household	17.9%
4 Person Household	14.9%
5 Person Household	6.3%
6 Person Household	2.2%
7 + Person Household	1.2%
2010 Households by Tenure and Mortgage Status	
Total	85,864
Owner Occupied	72.3%
Owned with a Mortgage/Loan	55.4%
Owned Free and Clear	17.0%
Renter Occupied	27.7%
2010 Housing Units By Urban/ Rural Status	
Total Housing Units	94,196
Housing Units Inside Urbanized Area	71.0%
Housing Units Inside Urbanized Cluster	6.4%
Rural Housing Units	22.6%

Data Note: Households with children include any households with people under age 18, related or not. Multigenerational households are families with 3 or more parent-child relationships. Unmarried partner households are usually classified as nonfamily households unless there is another member of the household related to the householder. Multigenerational and unmarried partner households are reported only to the tract level. Esri estimated block group data, which is used to estimate polygons or non-standard geography.

Source: U.S. Census Bureau, Census 2010 Summary File 1. Esri forecasts for 2018 and 2023 Esri converted Census 2000 data into 2010 geography.

		York County, ...
Top 3 Tapestry Segments		
	1.	Southern Satellites (10A)
	2.	Middleburg (4C)
	3.	Boomburbs (1C)
2018 Consumer Spending		
Apparel & Services: Total \$		\$219,952,339
Average Spent		\$2,169.48
Spending Potential Index		100
Education: Total \$		\$138,123,237
Average Spent		\$1,362.36
Spending Potential Index		94
Entertainment/Recreation: Total \$		\$324,884,353
Average Spent		\$3,204.46
Spending Potential Index		99
Food at Home: Total \$		\$506,954,662
Average Spent		\$5,000.29
Spending Potential Index		100
Food Away from Home: Total \$		\$357,685,203
Average Spent		\$3,527.99
Spending Potential Index		100
Health Care: Total \$		\$585,482,580
Average Spent		\$5,774.84
Spending Potential Index		101
HH Furnishings & Equipment: Total \$		\$212,286,721
Average Spent		\$2,093.87
Spending Potential Index		100
Personal Care Products & Services: Total \$		\$84,393,041
Average Spent		\$832.40
Spending Potential Index		101
Shelter: Total \$		\$1,634,175,099
Average Spent		\$16,118.51
Spending Potential Index		96
Support Payments/Cash Contributions/Gifts in Kind: Total \$		\$246,719,838
Average Spent		\$2,433.49
Spending Potential Index		98
Travel: Total \$		\$210,689,397
Average Spent		\$2,078.11
Spending Potential Index		96
Vehicle Maintenance & Repairs: Total \$		\$109,541,657
Average Spent		\$1,080.45
Spending Potential Index		100

Data Note: Consumer spending shows the amount spent on a variety of goods and services by households that reside in the area. Expenditures are shown by broad budget categories that are not mutually exclusive. Consumer spending does not equal business revenue. Total and Average Amount Spent Per Household represent annual figures. The Spending Potential Index represents the amount spent in the area relative to a national average of 100.

Source: Consumer Spending data are derived from the 2015 and 2016 Consumer Expenditure Surveys, Bureau of Labor Statistics. Esri.

Source: U.S. Census Bureau, Census 2010 Summary File 1. Esri forecasts for 2018 and 2023 Esri converted Census 2000 data into 2010 geography.