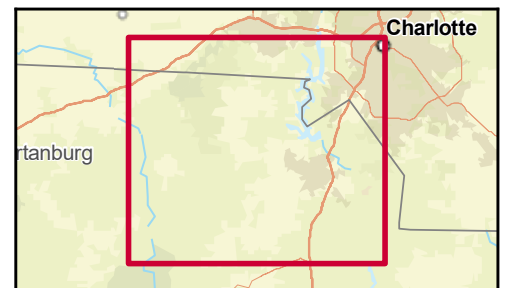
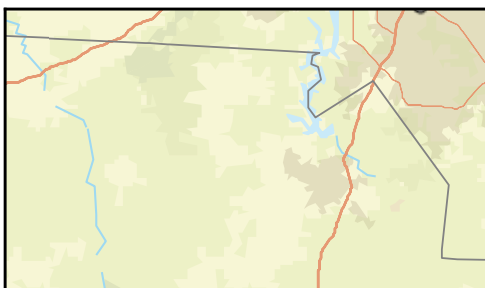
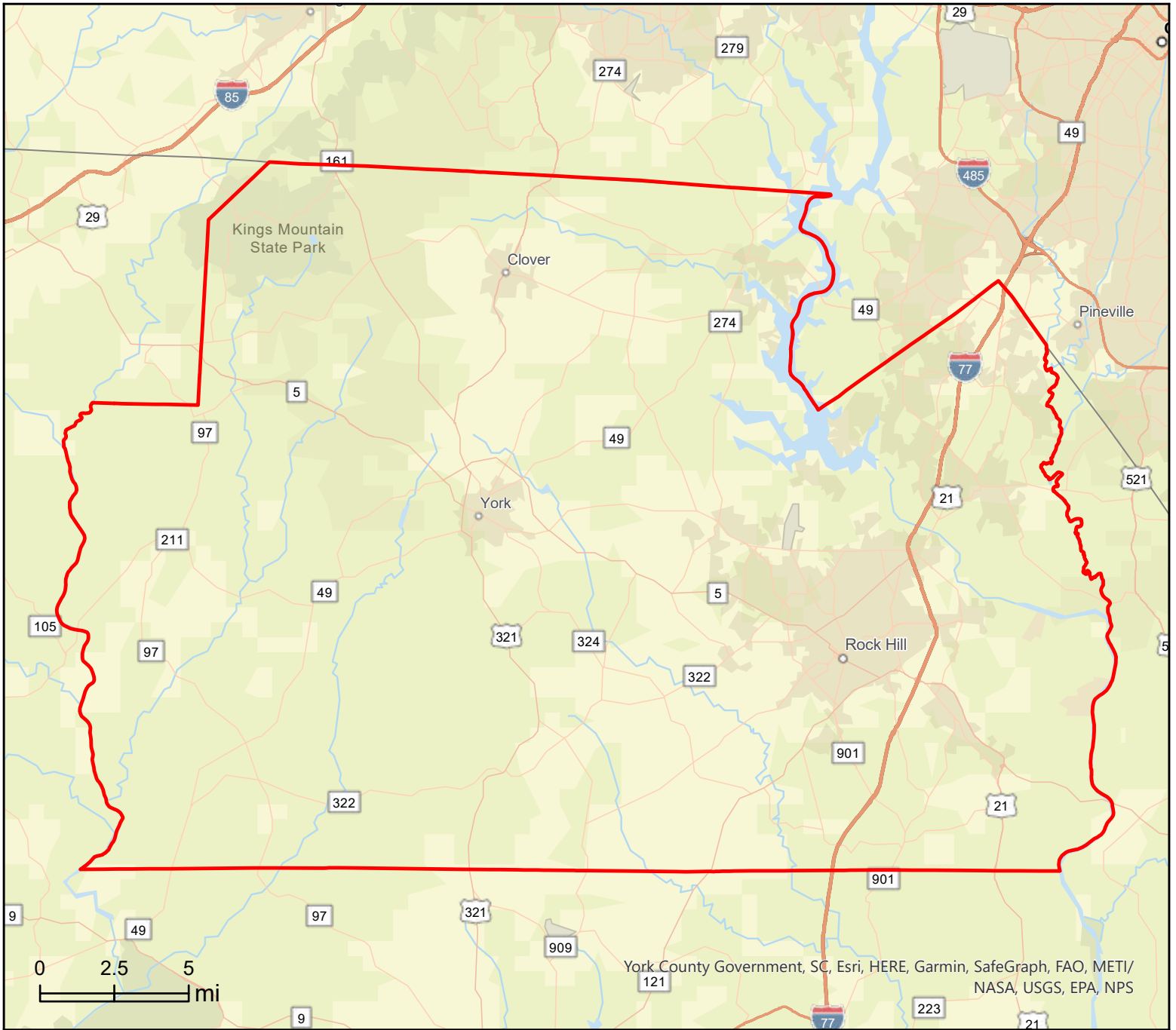


York County, SC (45091)
York County, SC (45091)
Geography: County

Prepared by Esri





Community Profile

York County, SC (45091)
 York County, SC (45091)
 Geography: County

Prepared by Esri

	York County, ...
Population Summary	
2010 Total Population	226,073
2020 Total Population	282,090
2020 Group Quarters	3,924
2022 Total Population	296,250
2022 Group Quarters	3,924
2027 Total Population	314,267
2022-2027 Annual Rate	1.19%
2022 Total Daytime Population	272,932
Workers	119,244
Residents	153,688
Household Summary	
2010 Households	85,864
2010 Average Household Size	2.59
2020 Total Households	107,812
2020 Average Household Size	2.58
2022 Households	113,371
2022 Average Household Size	2.58
2027 Households	120,474
2027 Average Household Size	2.58
2022-2027 Annual Rate	1.22%
2010 Families	61,089
2010 Average Family Size	3.06
2022 Families	77,978
2022 Average Family Size	3.11
2027 Families	82,492
2027 Average Family Size	3.12
2022-2027 Annual Rate	1.13%
Housing Unit Summary	
2000 Housing Units	66,061
Owner Occupied Housing Units	67.6%
Renter Occupied Housing Units	24.9%
Vacant Housing Units	7.6%
2010 Housing Units	94,196
Owner Occupied Housing Units	65.9%
Renter Occupied Housing Units	25.2%
Vacant Housing Units	8.8%
2020 Housing Units	114,656
Vacant Housing Units	6.0%
2022 Housing Units	120,035
Owner Occupied Housing Units	68.6%
Renter Occupied Housing Units	25.9%
Vacant Housing Units	5.6%
2027 Housing Units	127,898
Owner Occupied Housing Units	69.5%
Renter Occupied Housing Units	24.7%
Vacant Housing Units	5.8%
Median Household Income	
2022	\$77,052
2027	\$89,727
Median Home Value	
2022	\$285,169
2027	\$298,859
Per Capita Income	
2022	\$40,633
2027	\$46,676
Median Age	
2010	37.1
2022	38.8
2027	39.1

Data Note: Household population includes persons not residing in group quarters. Average Household Size is the household population divided by total households. Persons in families include the householder and persons related to the householder by birth, marriage, or adoption. Per Capita Income represents the income received by all persons aged 15 years and over divided by the total population.

Source: Esri forecasts for 2022 and 2027. U.S. Census Bureau 2000 and 2010 decennial Census data converted by Esri into 2020 geography.

March 01, 2023



Community Profile

York County, SC (45091)
York County, SC (45091)
Geography: County

Prepared by Esri

York County, ...

2022 Households by Income	
Household Income Base	113,365
<\$15,000	5.3%
\$15,000 - \$24,999	5.7%
\$25,000 - \$34,999	7.7%
\$35,000 - \$49,999	12.9%
\$50,000 - \$74,999	16.9%
\$75,000 - \$99,999	12.8%
\$100,000 - \$149,999	18.5%
\$150,000 - \$199,999	11.2%
\$200,000+	8.9%
Average Household Income	\$106,080
2027 Households by Income	
Household Income Base	120,468
<\$15,000	4.0%
\$15,000 - \$24,999	4.3%
\$25,000 - \$34,999	5.8%
\$35,000 - \$49,999	11.0%
\$50,000 - \$74,999	16.2%
\$75,000 - \$99,999	13.2%
\$100,000 - \$149,999	20.8%
\$150,000 - \$199,999	14.4%
\$200,000+	10.2%
Average Household Income	\$121,668
2022 Owner Occupied Housing Units by Value	
Total	82,306
<\$50,000	4.8%
\$50,000 - \$99,999	4.4%
\$100,000 - \$149,999	6.5%
\$150,000 - \$199,999	10.0%
\$200,000 - \$249,999	13.3%
\$250,000 - \$299,999	15.6%
\$300,000 - \$399,999	20.1%
\$400,000 - \$499,999	11.2%
\$500,000 - \$749,999	9.0%
\$750,000 - \$999,999	3.8%
\$1,000,000 - \$1,499,999	1.1%
\$1,500,000 - \$1,999,999	0.0%
\$2,000,000 +	0.2%
Average Home Value	\$332,307
2027 Owner Occupied Housing Units by Value	
Total	88,828
<\$50,000	4.2%
\$50,000 - \$99,999	3.9%
\$100,000 - \$149,999	5.7%
\$150,000 - \$199,999	8.8%
\$200,000 - \$249,999	11.7%
\$250,000 - \$299,999	16.0%
\$300,000 - \$399,999	20.7%
\$400,000 - \$499,999	12.7%
\$500,000 - \$749,999	10.3%
\$750,000 - \$999,999	4.4%
\$1,000,000 - \$1,499,999	1.2%
\$1,500,000 - \$1,999,999	0.0%
\$2,000,000 +	0.3%
Average Home Value	\$351,248

Data Note: Income represents the preceding year, expressed in current dollars. Household income includes wage and salary earnings, interest dividends, net rents, pensions, SSI and welfare payments, child support, and alimony.

Source: Esri forecasts for 2022 and 2027. U.S. Census Bureau 2000 and 2010 decennial Census data converted by Esri into 2020 geography.

March 01, 2023



Community Profile

York County, SC (45091)
 York County, SC (45091)
 Geography: County

Prepared by Esri

	York County, ...
2010 Population by Age	
Total	226,073
0 - 4	6.9%
5 - 9	7.2%
10 - 14	7.2%
15 - 24	13.4%
25 - 34	12.3%
35 - 44	14.9%
45 - 54	15.1%
55 - 64	11.7%
65 - 74	6.7%
75 - 84	3.4%
85 +	1.2%
18 +	74.5%
2022 Population by Age	
Total	296,250
0 - 4	6.1%
5 - 9	6.6%
10 - 14	6.9%
15 - 24	12.5%
25 - 34	12.9%
35 - 44	13.1%
45 - 54	13.4%
55 - 64	12.9%
65 - 74	9.7%
75 - 84	4.4%
85 +	1.4%
18 +	76.4%
2027 Population by Age	
Total	314,267
0 - 4	6.1%
5 - 9	6.5%
10 - 14	6.9%
15 - 24	12.2%
25 - 34	12.7%
35 - 44	13.3%
45 - 54	12.5%
55 - 64	12.3%
65 - 74	10.2%
75 - 84	5.7%
85 +	1.6%
18 +	76.5%
2010 Population by Sex	
Males	109,092
Females	116,981
2022 Population by Sex	
Males	144,164
Females	152,086
2027 Population by Sex	
Males	152,937
Females	161,330

Source: Esri forecasts for 2022 and 2027. U.S. Census Bureau 2000 and 2010 decennial Census data converted by Esri into 2020 geography.



Community Profile

York County, SC (45091)
York County, SC (45091)
Geography: County

Prepared by Esri

York County, ...

2010 Population by Race/Ethnicity	
Total	226,073
White Alone	74.8%
Black Alone	19.0%
American Indian Alone	0.9%
Asian Alone	1.5%
Pacific Islander Alone	0.1%
Some Other Race Alone	1.9%
Two or More Races	1.8%
Hispanic Origin	4.5%
Diversity Index	45.4

2020 Population by Race/Ethnicity	
Total	282,090
White Alone	68.0%
Black Alone	18.4%
American Indian Alone	0.8%
Asian Alone	3.1%
Pacific Islander Alone	0.0%
Some Other Race Alone	3.0%
Two or More Races	6.7%
Hispanic Origin	6.7%
Diversity Index	56.0

2022 Population by Race/Ethnicity	
Total	296,250
White Alone	67.6%
Black Alone	18.6%
American Indian Alone	0.8%
Asian Alone	3.0%
Pacific Islander Alone	0.0%
Some Other Race Alone	3.0%
Two or More Races	6.9%
Hispanic Origin	6.8%
Diversity Index	56.5

2027 Population by Race/Ethnicity	
Total	314,267
White Alone	66.6%
Black Alone	18.9%
American Indian Alone	0.8%
Asian Alone	3.1%
Pacific Islander Alone	0.0%
Some Other Race Alone	3.1%
Two or More Races	7.5%
Hispanic Origin	6.9%
Diversity Index	57.6

2010 Population by Relationship and Household Type	
Total	226,073
In Households	98.3%
In Family Households	84.7%
Householder	27.0%
Spouse	20.0%
Child	32.1%
Other relative	3.5%
Nonrelative	2.1%
In Nonfamily Households	13.6%
In Group Quarters	1.7%
Institutionalized Population	0.7%
Noninstitutionalized Population	1.1%

Data Note: Persons of Hispanic Origin may be of any race. The Diversity Index measures the probability that two people from the same area will be from different race/ethnic groups.

Source: Esri forecasts for 2022 and 2027. U.S. Census Bureau 2000 and 2010 decennial Census data converted by Esri into 2020 geography.

March 01, 2023



Community Profile

York County, SC (45091)
York County, SC (45091)
Geography: County

Prepared by Esri

York County, ...

2022 Population 25+ by Educational Attainment	
Total	200,902
Less than 9th Grade	2.4%
9th - 12th Grade, No Diploma	5.2%
High School Graduate	20.2%
GED/Alternative Credential	4.0%
Some College, No Degree	19.8%
Associate Degree	11.4%
Bachelor's Degree	24.5%
Graduate/Professional Degree	12.6%
2022 Population 15+ by Marital Status	
Total	237,991
Never Married	30.4%
Married	55.1%
Widowed	5.3%
Divorced	9.2%
2022 Civilian Population 16+ in Labor Force	
Civilian Population 16+	150,263
Population 16+ Employed	96.1%
Population 16+ Unemployment rate	3.9%
Population 16-24 Employed	12.3%
Population 16-24 Unemployment rate	10.6%
Population 25-54 Employed	66.3%
Population 25-54 Unemployment rate	2.6%
Population 55-64 Employed	16.6%
Population 55-64 Unemployment rate	2.0%
Population 65+ Employed	4.7%
Population 65+ Unemployment rate	9.7%
2022 Employed Population 16+ by Industry	
Total	144,398
Agriculture/Mining	0.5%
Construction	6.3%
Manufacturing	14.9%
Wholesale Trade	3.3%
Retail Trade	11.7%
Transportation/Utilities	8.2%
Information	1.7%
Finance/Insurance/Real Estate	8.1%
Services	42.0%
Public Administration	3.2%
2022 Employed Population 16+ by Occupation	
Total	144,398
White Collar	64.3%
Management/Business/Financial	20.3%
Professional	21.6%
Sales	9.9%
Administrative Support	12.5%
Services	12.4%
Blue Collar	23.3%
Farming/Forestry/Fishing	0.2%
Construction/Extraction	3.8%
Installation/Maintenance/Repair	3.9%
Production	7.3%
Transportation/Material Moving	8.2%

Source: Esri forecasts for 2022 and 2027. U.S. Census Bureau 2000 and 2010 decennial Census data converted by Esri into 2020 geography.

March 01, 2023



Community Profile

York County, SC (45091)
 York County, SC (45091)
 Geography: County

Prepared by Esri

	York County, ...
2010 Households by Type	
Total	85,864
Households with 1 Person	23.5%
Households with 2+ People	76.5%
Family Households	71.1%
Husband-wife Families	52.6%
With Related Children	24.2%
Other Family (No Spouse Present)	18.6%
Other Family with Male Householder	4.6%
With Related Children	2.7%
Other Family with Female Householder	13.9%
With Related Children	9.5%
Nonfamily Households	5.4%
All Households with Children	36.8%
Multigenerational Households	4.3%
Unmarried Partner Households	6.1%
Male-female	5.4%
Same-sex	0.7%
2010 Households by Size	
Total	85,864
1 Person Household	23.5%
2 Person Household	34.0%
3 Person Household	17.9%
4 Person Household	14.9%
5 Person Household	6.3%
6 Person Household	2.2%
7 + Person Household	1.2%
2010 Households by Tenure and Mortgage Status	
Total	85,864
Owner Occupied	72.3%
Owned with a Mortgage/Loan	55.4%
Owned Free and Clear	17.0%
Renter Occupied	27.7%
2022 Affordability, Mortgage and Wealth	
Housing Affordability Index	129
Percent of Income for Mortgage	19.5%
Wealth Index	101
2010 Housing Units By Urban/ Rural Status	
Total Housing Units	94,196
Housing Units Inside Urbanized Area	71.0%
Housing Units Inside Urbanized Cluster	6.4%
Rural Housing Units	22.6%
2010 Population By Urban/ Rural Status	
Total Population	226,073
Population Inside Urbanized Area	70.7%
Population Inside Urbanized Cluster	6.4%
Rural Population	23.0%

Data Note: Households with children include any households with people under age 18, related or not. Multigenerational households are families with 3 or more parent-child relationships. Unmarried partner households are usually classified as nonfamily households unless there is another member of the household related to the householder. Multigenerational and unmarried partner households are reported only to the tract level. Esri estimated block group data, which is used to estimate polygons or non-standard geography.

Source: Esri forecasts for 2022 and 2027. U.S. Census Bureau 2000 and 2010 decennial Census data converted by Esri into 2020 geography.



Community Profile

York County, SC (45091)
 York County, SC (45091)
 Geography: County

Prepared by Esri

	York County, ...
Top 3 Tapestry Segments	
1.	Middleburg (4C)
2.	Southern Satellites (10A)
3.	Boomburbs (1C)
2022 Consumer Spending	
Apparel & Services: Total \$	\$276,811,730
Average Spent	\$2,441.64
Spending Potential Index	101
Education: Total \$	\$207,060,876
Average Spent	\$1,826.40
Spending Potential Index	93
Entertainment/Recreation: Total \$	\$424,474,769
Average Spent	\$3,744.12
Spending Potential Index	102
Food at Home: Total \$	\$708,977,623
Average Spent	\$6,253.61
Spending Potential Index	101
Food Away from Home: Total \$	\$496,465,847
Average Spent	\$4,379.13
Spending Potential Index	102
Health Care: Total \$	\$838,651,882
Average Spent	\$7,397.41
Spending Potential Index	104
HH Furnishings & Equipment: Total \$	\$300,279,712
Average Spent	\$2,648.65
Spending Potential Index	103
Personal Care Products & Services: Total \$	\$117,439,464
Average Spent	\$1,035.89
Spending Potential Index	102
Shelter: Total \$	\$2,524,708,458
Average Spent	\$22,269.44
Spending Potential Index	97
Support Payments/Cash Contributions/Gifts in Kind: Total \$	\$322,383,199
Average Spent	\$2,843.61
Spending Potential Index	105
Travel: Total \$	\$327,697,037
Average Spent	\$2,890.48
Spending Potential Index	101
Vehicle Maintenance & Repairs: Total \$	\$148,859,881
Average Spent	\$1,313.03
Spending Potential Index	104

Data Note: Consumer spending shows the amount spent on a variety of goods and services by households that reside in the area. Expenditures are shown by broad budget categories that are not mutually exclusive. Consumer spending does not equal business revenue. Total and Average Amount Spent Per Household represent annual figures. The Spending Potential Index represents the amount spent in the area relative to a national average of 100.

Source: Consumer Spending data are derived from the 2018 and 2019 Consumer Expenditure Surveys, Bureau of Labor Statistics. Esri.

Source: Esri forecasts for 2022 and 2027. U.S. Census Bureau 2000 and 2010 decennial Census data converted by Esri into 2020 geography.