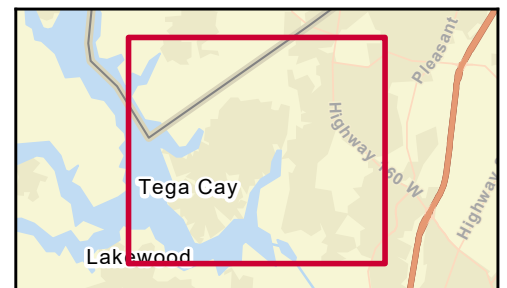
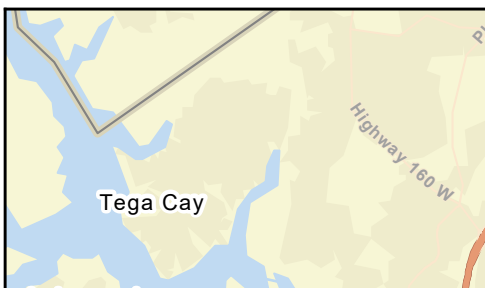
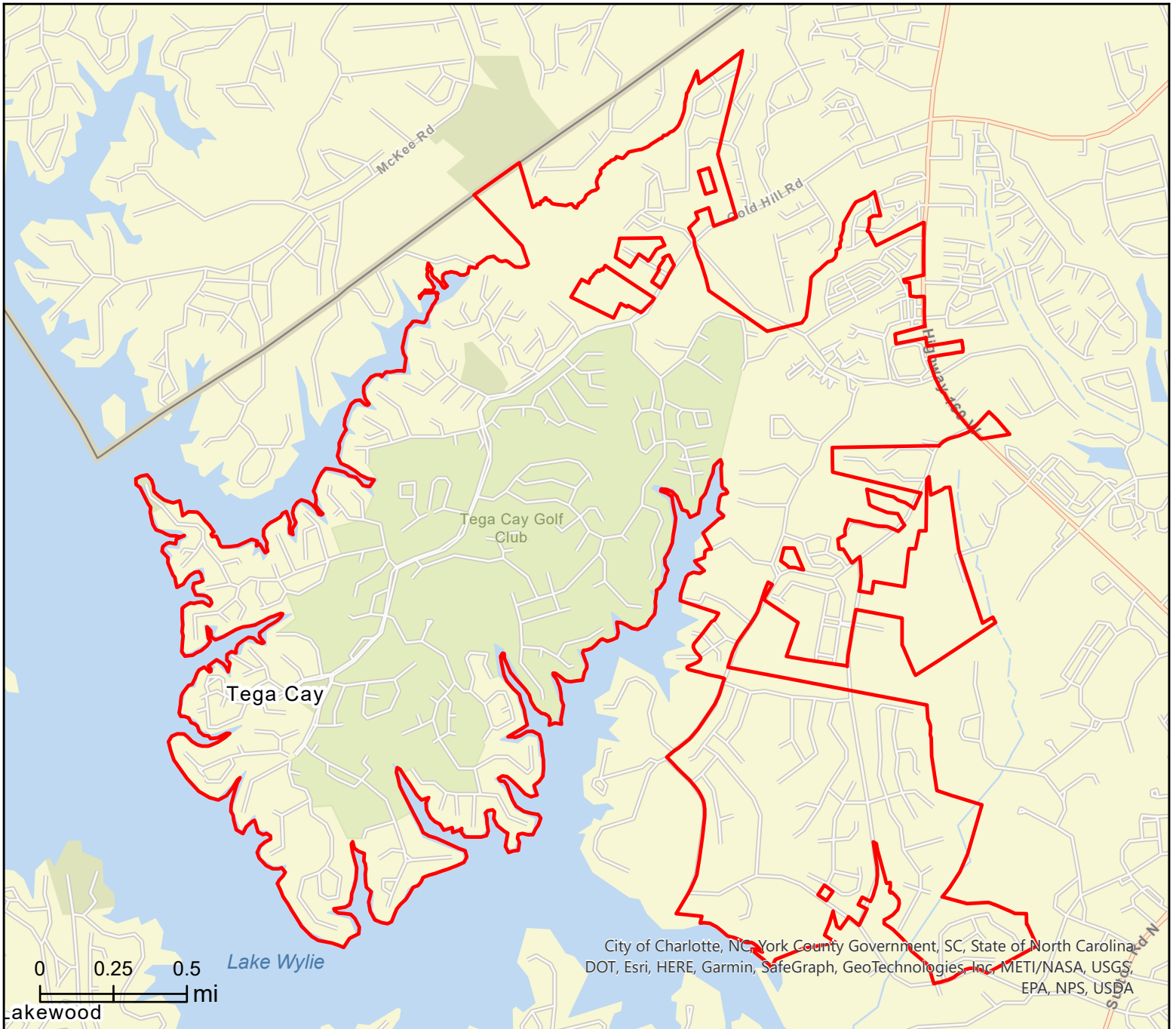


Tega Cay city, SC (4571417)
Tega Cay city, SC (4571417)
Geography: Place

Prepared by Esri





Community Profile

Tega Cay city, SC (4571417)
 Tega Cay city, SC (4571417)
 Geography: Place

Prepared by Esri

	Tega Cay city...
Population Summary	
2010 Total Population	7,379
2020 Total Population	12,832
2020 Group Quarters	0
2022 Total Population	13,616
2022 Group Quarters	0
2027 Total Population	14,161
2022-2027 Annual Rate	0.79%
2022 Total Daytime Population	9,987
Workers	2,810
Residents	7,177
Household Summary	
2010 Households	2,654
2010 Average Household Size	2.78
2020 Total Households	4,502
2020 Average Household Size	2.85
2022 Households	4,756
2022 Average Household Size	2.86
2027 Households	4,951
2027 Average Household Size	2.86
2022-2027 Annual Rate	0.81%
2010 Families	2,098
2010 Average Family Size	3.14
2022 Families	3,649
2022 Average Family Size	3.30
2027 Families	3,788
2027 Average Family Size	3.30
2022-2027 Annual Rate	0.75%
Housing Unit Summary	
2000 Housing Units	1,846
Owner Occupied Housing Units	80.1%
Renter Occupied Housing Units	14.0%
Vacant Housing Units	5.9%
2010 Housing Units	2,818
Owner Occupied Housing Units	83.3%
Renter Occupied Housing Units	11.0%
Vacant Housing Units	5.8%
2020 Housing Units	4,653
Vacant Housing Units	3.2%
2022 Housing Units	4,905
Owner Occupied Housing Units	83.4%
Renter Occupied Housing Units	13.5%
Vacant Housing Units	3.0%
2027 Housing Units	5,118
Owner Occupied Housing Units	83.9%
Renter Occupied Housing Units	12.8%
Vacant Housing Units	3.3%
Median Household Income	
2022	\$130,631
2027	\$147,452
Median Home Value	
2022	\$375,753
2027	\$392,143
Per Capita Income	
2022	\$57,576
2027	\$63,349
Median Age	
2010	40.2
2022	39.9
2027	39.5

Data Note: Household population includes persons not residing in group quarters. Average Household Size is the household population divided by total households. Persons in families include the householder and persons related to the householder by birth, marriage, or adoption. Per Capita Income represents the income received by all persons aged 15 years and over divided by the total population.

Source: Esri forecasts for 2022 and 2027. U.S. Census Bureau 2000 and 2010 decennial Census data converted by Esri into 2020 geography.



Community Profile

Tega Cay city, SC (4571417)
 Tega Cay city, SC (4571417)
 Geography: Place

Prepared by Esri

Tega Cay city...

2022 Households by Income	
Household Income Base	4,756
<\$15,000	1.3%
\$15,000 - \$24,999	1.8%
\$25,000 - \$34,999	2.5%
\$35,000 - \$49,999	5.8%
\$50,000 - \$74,999	12.9%
\$75,000 - \$99,999	8.9%
\$100,000 - \$149,999	23.8%
\$150,000 - \$199,999	21.6%
\$200,000+	21.4%
Average Household Income	\$161,069
2027 Households by Income	
Household Income Base	4,951
<\$15,000	0.9%
\$15,000 - \$24,999	1.3%
\$25,000 - \$34,999	1.8%
\$35,000 - \$49,999	4.5%
\$50,000 - \$74,999	6.2%
\$75,000 - \$99,999	6.3%
\$100,000 - \$149,999	30.0%
\$150,000 - \$199,999	28.1%
\$200,000+	20.9%
Average Household Income	\$176,983
2022 Owner Occupied Housing Units by Value	
Total	4,092
<\$50,000	1.2%
\$50,000 - \$99,999	0.0%
\$100,000 - \$149,999	0.3%
\$150,000 - \$199,999	2.9%
\$200,000 - \$249,999	8.9%
\$250,000 - \$299,999	13.9%
\$300,000 - \$399,999	30.0%
\$400,000 - \$499,999	17.6%
\$500,000 - \$749,999	17.5%
\$750,000 - \$999,999	6.3%
\$1,000,000 - \$1,499,999	1.1%
\$1,500,000 - \$1,999,999	0.0%
\$2,000,000 +	0.3%
Average Home Value	\$431,995
2027 Owner Occupied Housing Units by Value	
Total	4,297
<\$50,000	0.9%
\$50,000 - \$99,999	0.0%
\$100,000 - \$149,999	0.2%
\$150,000 - \$199,999	2.2%
\$200,000 - \$249,999	7.0%
\$250,000 - \$299,999	13.1%
\$300,000 - \$399,999	28.9%
\$400,000 - \$499,999	19.5%
\$500,000 - \$749,999	19.7%
\$750,000 - \$999,999	7.2%
\$1,000,000 - \$1,499,999	1.1%
\$1,500,000 - \$1,999,999	0.0%
\$2,000,000 +	0.3%
Average Home Value	\$450,733

Data Note: Income represents the preceding year, expressed in current dollars. Household income includes wage and salary earnings, interest dividends, net rents, pensions, SSI and welfare payments, child support, and alimony.

Source: Esri forecasts for 2022 and 2027. U.S. Census Bureau 2000 and 2010 decennial Census data converted by Esri into 2020 geography.



Community Profile

Tega Cay city, SC (4571417)
Tega Cay city, SC (4571417)
Geography: Place

Prepared by Esri

	Tega Cay city...
2010 Population by Age	
Total	7,375
0 - 4	6.8%
5 - 9	8.5%
10 - 14	8.9%
15 - 24	8.6%
25 - 34	7.8%
35 - 44	18.6%
45 - 54	16.8%
55 - 64	13.1%
65 - 74	7.3%
75 - 84	3.0%
85 +	0.7%
18 +	71.3%
2022 Population by Age	
Total	13,616
0 - 4	6.4%
5 - 9	7.8%
10 - 14	8.5%
15 - 24	11.2%
25 - 34	9.3%
35 - 44	14.5%
45 - 54	15.3%
55 - 64	12.7%
65 - 74	9.0%
75 - 84	4.0%
85 +	1.1%
18 +	72.7%
2027 Population by Age	
Total	14,162
0 - 4	6.5%
5 - 9	7.5%
10 - 14	7.9%
15 - 24	10.6%
25 - 34	11.2%
35 - 44	14.0%
45 - 54	13.9%
55 - 64	12.4%
65 - 74	9.4%
75 - 84	5.3%
85 +	1.3%
18 +	73.7%
2010 Population by Sex	
Males	3,651
Females	3,728
2022 Population by Sex	
Males	6,714
Females	6,902
2027 Population by Sex	
Males	6,985
Females	7,177

Source: Esri forecasts for 2022 and 2027. U.S. Census Bureau 2000 and 2010 decennial Census data converted by Esri into 2020 geography.

March 01, 2023



Community Profile

Tega Cay city, SC (4571417)
 Tega Cay city, SC (4571417)
 Geography: Place

Prepared by Esri

Tega Cay city...

2010 Population by Race/Ethnicity	
Total	7,380
White Alone	91.5%
Black Alone	3.9%
American Indian Alone	0.4%
Asian Alone	2.0%
Pacific Islander Alone	0.1%
Some Other Race Alone	0.8%
Two or More Races	1.5%
Hispanic Origin	3.4%
Diversity Index	21.6
2020 Population by Race/Ethnicity	
Total	12,832
White Alone	79.4%
Black Alone	4.3%
American Indian Alone	0.2%
Asian Alone	7.4%
Pacific Islander Alone	0.0%
Some Other Race Alone	1.4%
Two or More Races	7.3%
Hispanic Origin	5.7%
Diversity Index	42.5
2022 Population by Race/Ethnicity	
Total	13,615
White Alone	76.3%
Black Alone	6.2%
American Indian Alone	0.2%
Asian Alone	8.0%
Pacific Islander Alone	0.0%
Some Other Race Alone	1.7%
Two or More Races	7.5%
Hispanic Origin	6.0%
Diversity Index	46.9
2027 Population by Race/Ethnicity	
Total	14,162
White Alone	75.3%
Black Alone	6.4%
American Indian Alone	0.2%
Asian Alone	8.1%
Pacific Islander Alone	0.0%
Some Other Race Alone	1.8%
Two or More Races	8.1%
Hispanic Origin	6.1%
Diversity Index	48.2
2010 Population by Relationship and Household Type	
Total	7,379
In Households	100.0%
In Family Households	90.6%
Householder	29.3%
Spouse	25.2%
Child	33.1%
Other relative	1.9%
Nonrelative	1.2%
In Nonfamily Households	9.4%
In Group Quarters	0.0%
Institutionalized Population	0.0%
Noninstitutionalized Population	0.0%

Data Note: Persons of Hispanic Origin may be of any race. The Diversity Index measures the probability that two people from the same area will be from different race/ethnic groups.

Source: Esri forecasts for 2022 and 2027. U.S. Census Bureau 2000 and 2010 decennial Census data converted by Esri into 2020 geography.

March 01, 2023



Community Profile

Tega Cay city, SC (4571417)
 Tega Cay city, SC (4571417)
 Geography: Place

Prepared by Esri

	Tega Cay city...
2022 Population 25+ by Educational Attainment	
Total	8,987
Less than 9th Grade	0.4%
9th - 12th Grade, No Diploma	1.1%
High School Graduate	9.9%
GED/Alternative Credential	2.1%
Some College, No Degree	15.2%
Associate Degree	10.0%
Bachelor's Degree	38.6%
Graduate/Professional Degree	22.7%
2022 Population 15+ by Marital Status	
Total	10,513
Never Married	21.5%
Married	66.8%
Widowed	6.1%
Divorced	5.6%
2022 Civilian Population 16+ in Labor Force	
Civilian Population 16+	6,820
Population 16+ Employed	95.8%
Population 16+ Unemployment rate	4.2%
Population 16-24 Employed	8.0%
Population 16-24 Unemployment rate	25.7%
Population 25-54 Employed	68.7%
Population 25-54 Unemployment rate	1.9%
Population 55-64 Employed	17.9%
Population 55-64 Unemployment rate	1.5%
Population 65+ Employed	5.3%
Population 65+ Unemployment rate	0.0%
2022 Employed Population 16+ by Industry	
Total	6,534
Agriculture/Mining	0.0%
Construction	5.0%
Manufacturing	14.3%
Wholesale Trade	4.9%
Retail Trade	6.9%
Transportation/Utilities	6.8%
Information	4.2%
Finance/Insurance/Real Estate	13.3%
Services	38.5%
Public Administration	6.0%
2022 Employed Population 16+ by Occupation	
Total	6,534
White Collar	79.0%
Management/Business/Financial	32.8%
Professional	25.7%
Sales	11.5%
Administrative Support	9.0%
Services	9.3%
Blue Collar	11.7%
Farming/Forestry/Fishing	0.0%
Construction/Extraction	1.8%
Installation/Maintenance/Repair	1.3%
Production	2.7%
Transportation/Material Moving	5.9%

Source: Esri forecasts for 2022 and 2027. U.S. Census Bureau 2000 and 2010 decennial Census data converted by Esri into 2020 geography.

March 01, 2023



Community Profile

Tega Cay city, SC (4571417)
Tega Cay city, SC (4571417)
Geography: Place

Prepared by Esri

	Tega Cay city...
2010 Households by Type	
Total	2,654
Households with 1 Person	16.9%
Households with 2+ People	83.1%
Family Households	79.1%
Husband-wife Families	68.3%
With Related Children	33.5%
Other Family (No Spouse Present)	10.8%
Other Family with Male Householder	3.2%
With Related Children	2.1%
Other Family with Female Householder	7.6%
With Related Children	5.5%
Nonfamily Households	4.0%
All Households with Children	41.4%
Multigenerational Households	2.5%
Unmarried Partner Households	4.5%
Male-female	3.8%
Same-sex	0.7%
2010 Households by Size	
Total	2,653
1 Person Household	16.9%
2 Person Household	37.8%
3 Person Household	17.1%
4 Person Household	18.2%
5 Person Household	7.4%
6 Person Household	2.0%
7 + Person Household	0.5%
2010 Households by Tenure and Mortgage Status	
Total	2,656
Owner Occupied	88.3%
Owned with a Mortgage/Loan	74.9%
Owned Free and Clear	13.3%
Renter Occupied	11.7%
2022 Affordability, Mortgage and Wealth	
Housing Affordability Index	170
Percent of Income for Mortgage	15.2%
Wealth Index	187
2010 Housing Units By Urban/ Rural Status	
Total Housing Units	2,818
Housing Units Inside Urbanized Area	96.3%
Housing Units Inside Urbanized Cluster	0.0%
Rural Housing Units	3.7%
2010 Population By Urban/ Rural Status	
Total Population	7,379
Population Inside Urbanized Area	97.1%
Population Inside Urbanized Cluster	0.0%
Rural Population	2.9%

Data Note: Households with children include any households with people under age 18, related or not. Multigenerational households are families with 3 or more parent-child relationships. Unmarried partner households are usually classified as nonfamily households unless there is another member of the household related to the householder. Multigenerational and unmarried partner households are reported only to the tract level. Esri estimated block group data, which is used to estimate polygons or non-standard geography.

Source: Esri forecasts for 2022 and 2027. U.S. Census Bureau 2000 and 2010 decennial Census data converted by Esri into 2020 geography.



Community Profile

Tega Cay city, SC (4571417)
 Tega Cay city, SC (4571417)
 Geography: Place

Prepared by Esri

Tega Cay city...

Top 3 Tapestry Segments

1. Boomburbs (1C)
2. Savvy Suburbanites (1D)
- 3.

2022 Consumer Spending

Apparel & Services: Total \$	\$16,839,518
Average Spent	\$3,540.69
Spending Potential Index	147
Education: Total \$	\$14,976,988
Average Spent	\$3,149.07
Spending Potential Index	161
Entertainment/Recreation: Total \$	\$25,945,641
Average Spent	\$5,455.35
Spending Potential Index	149
Food at Home: Total \$	\$41,368,027
Average Spent	\$8,698.07
Spending Potential Index	140
Food Away from Home: Total \$	\$30,128,289
Average Spent	\$6,334.80
Spending Potential Index	147
Health Care: Total \$	\$48,305,265
Average Spent	\$10,156.70
Spending Potential Index	143
HH Furnishings & Equipment: Total \$	\$18,747,959
Average Spent	\$3,941.96
Spending Potential Index	154
Personal Care Products & Services: Total \$	\$7,218,373
Average Spent	\$1,517.74
Spending Potential Index	149
Shelter: Total \$	\$162,731,099
Average Spent	\$34,215.96
Spending Potential Index	149
Support Payments/Cash Contributions/Gifts in Kind: Total \$	\$20,605,678
Average Spent	\$4,332.56
Spending Potential Index	160
Travel: Total \$	\$22,118,711
Average Spent	\$4,650.70
Spending Potential Index	162
Vehicle Maintenance & Repairs: Total \$	\$8,589,105
Average Spent	\$1,805.95
Spending Potential Index	143

Data Note: Consumer spending shows the amount spent on a variety of goods and services by households that reside in the area. Expenditures are shown by broad budget categories that are not mutually exclusive. Consumer spending does not equal business revenue. Total and Average Amount Spent Per Household represent annual figures. The Spending Potential Index represents the amount spent in the area relative to a national average of 100.

Source: Consumer Spending data are derived from the 2018 and 2019 Consumer Expenditure Surveys, Bureau of Labor Statistics. Esri.

Source: Esri forecasts for 2022 and 2027. U.S. Census Bureau 2000 and 2010 decennial Census data converted by Esri into 2020 geography.

March 01, 2023