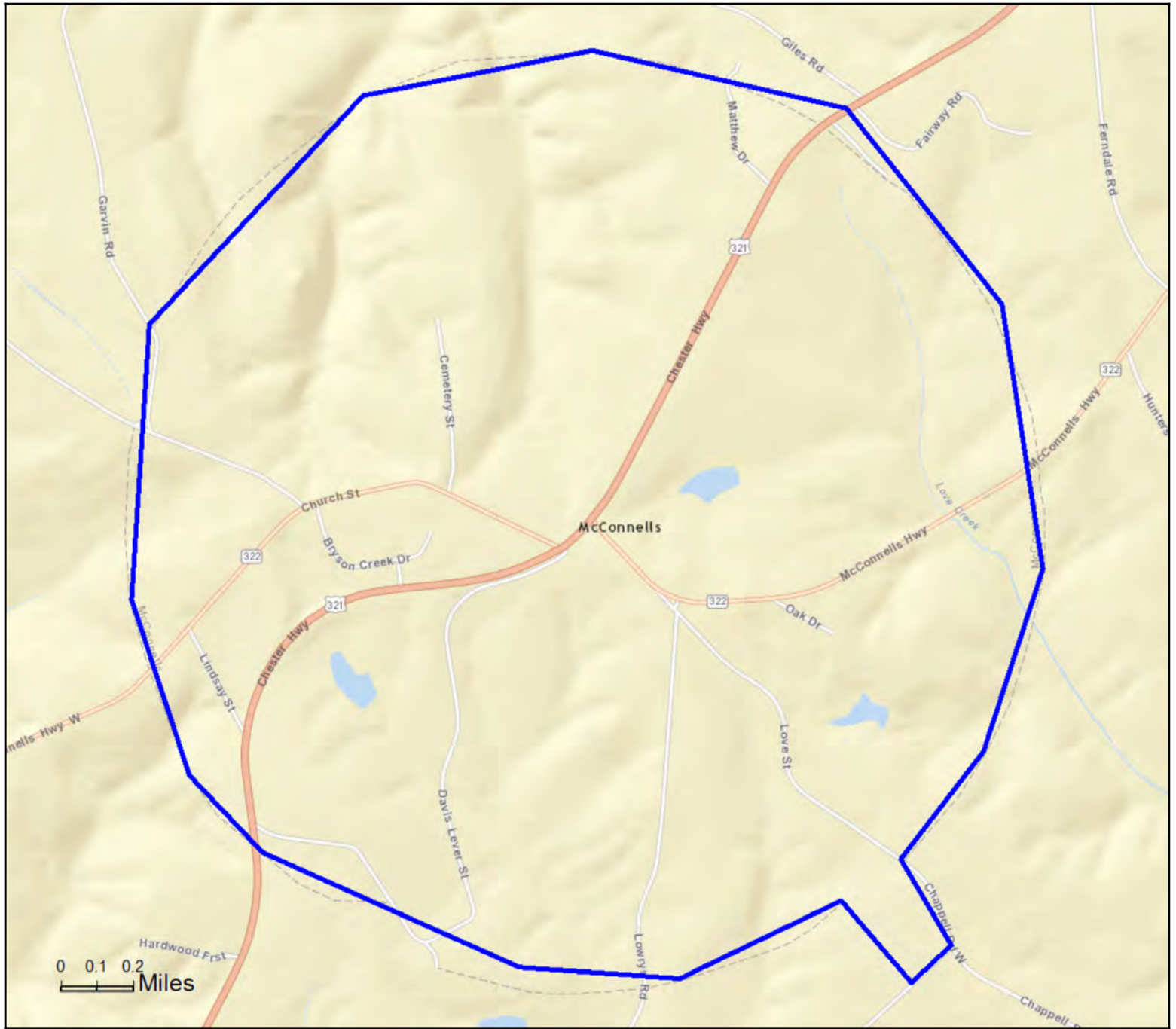


# Site Map

McConnells Town, SC  
McConnells Town, SC (4543675)  
Geography: Place

Prepared by YCED



	McConnells to...
<b>Population Summary</b>	
2000 Total Population	229
2010 Total Population	255
2018 Total Population	267
2018 Group Quarters	0
2023 Total Population	281
2018-2023 Annual Rate	1.03%
2018 Total Daytime Population	173
Workers	34
Residents	139
<b>Household Summary</b>	
2000 Households	85
2000 Average Household Size	2.69
2010 Households	100
2010 Average Household Size	2.55
2018 Households	105
2018 Average Household Size	2.54
2023 Households	111
2023 Average Household Size	2.53
2018-2023 Annual Rate	1.12%
2010 Families	77
2010 Average Family Size	2.97
2018 Families	78
2018 Average Family Size	2.92
2023 Families	81
2023 Average Family Size	2.95
2018-2023 Annual Rate	0.76%
<b>Housing Unit Summary</b>	
2000 Housing Units	91
Owner Occupied Housing Units	80.2%
Renter Occupied Housing Units	13.2%
Vacant Housing Units	6.6%
2010 Housing Units	109
Owner Occupied Housing Units	75.2%
Renter Occupied Housing Units	16.5%
Vacant Housing Units	8.3%
2018 Housing Units	115
Owner Occupied Housing Units	73.9%
Renter Occupied Housing Units	17.4%
Vacant Housing Units	8.7%
2023 Housing Units	121
Owner Occupied Housing Units	74.4%
Renter Occupied Housing Units	17.4%
Vacant Housing Units	8.3%
<b>Median Household Income</b>	
2018	\$52,621
2023	\$58,874
<b>Median Home Value</b>	
2018	\$129,412
2023	\$156,250
<b>Per Capita Income</b>	
2018	\$25,254
2023	\$29,307
<b>Median Age</b>	
2010	44.8
2018	42.0
2023	43.6

**Data Note:** Household population includes persons not residing in group quarters. Average Household Size is the household population divided by total households. Persons in families include the householder and persons related to the householder by birth, marriage, or adoption. Per Capita Income represents the income received by all persons aged 15 years and over divided by the total population.

**Source:** U.S. Census Bureau, Census 2010 Summary File 1. Esri forecasts for 2018 and 2023 Esri converted Census 2000 data into 2010 geography.

# Community Profile

McConnells Town, SC  
McConnells Town, SC (4543675)  
Geography: Place

Prepared by York County Economic

	McConnells to...
<b>2018 Households by Income</b>	
Household Income Base	106
<\$15,000	13.2%
\$15,000 - \$24,999	7.5%
\$25,000 - \$34,999	9.4%
\$35,000 - \$49,999	16.0%
\$50,000 - \$74,999	23.6%
\$75,000 - \$99,999	15.1%
\$100,000 - \$149,999	9.4%
\$150,000 - \$199,999	2.8%
\$200,000+	2.8%
Average Household Income	\$66,470
<b>2023 Households by Income</b>	
Household Income Base	112
<\$15,000	10.7%
\$15,000 - \$24,999	6.2%
\$25,000 - \$34,999	8.0%
\$35,000 - \$49,999	14.3%
\$50,000 - \$74,999	23.2%
\$75,000 - \$99,999	17.0%
\$100,000 - \$149,999	12.5%
\$150,000 - \$199,999	3.6%
\$200,000+	4.5%
Average Household Income	\$76,818
<b>2018 Owner Occupied Housing Units by Value</b>	
Total	86
<\$50,000	17.4%
\$50,000 - \$99,999	20.9%
\$100,000 - \$149,999	19.8%
\$150,000 - \$199,999	16.3%
\$200,000 - \$249,999	7.0%
\$250,000 - \$299,999	3.5%
\$300,000 - \$399,999	5.8%
\$400,000 - \$499,999	4.7%
\$500,000 - \$749,999	4.7%
\$750,000 - \$999,999	0.0%
\$1,000,000 - \$1,499,999	0.0%
\$1,500,000 - \$1,999,999	0.0%
\$2,000,000 +	0.0%
Average Home Value	\$168,895
<b>2023 Owner Occupied Housing Units by Value</b>	
Total	90
<\$50,000	14.4%
\$50,000 - \$99,999	16.7%
\$100,000 - \$149,999	16.7%
\$150,000 - \$199,999	17.8%
\$200,000 - \$249,999	7.8%
\$250,000 - \$299,999	4.4%
\$300,000 - \$399,999	8.9%
\$400,000 - \$499,999	6.7%
\$500,000 - \$749,999	6.7%
\$750,000 - \$999,999	0.0%
\$1,000,000 - \$1,499,999	0.0%
\$1,500,000 - \$1,999,999	0.0%
\$2,000,000 +	0.0%
Average Home Value	\$200,556

**Data Note:** Income represents the preceding year, expressed in current dollars. Household income includes wage and salary earnings, interest dividends, net rents, pensions, SSI and welfare payments, child support, and alimony.

**Source:** U.S. Census Bureau, Census 2010 Summary File 1. Esri forecasts for 2018 and 2023 Esri converted Census 2000 data into 2010 geography.

# Community Profile

McConnells Town, SC  
McConnells Town, SC (4543675)  
Geography: Place

Prepared by York County Economic

	<b>McConnells to...</b>
<b>2010 Population by Age</b>	
Total	255
0 - 4	4.3%
5 - 9	4.3%
10 - 14	9.8%
15 - 24	10.6%
25 - 34	8.6%
35 - 44	12.5%
45 - 54	18.4%
55 - 64	19.6%
65 - 74	7.5%
75 - 84	3.9%
85 +	0.4%
18 +	78.8%
<b>2018 Population by Age</b>	
Total	269
0 - 4	5.6%
5 - 9	5.9%
10 - 14	5.9%
15 - 24	10.8%
25 - 34	12.6%
35 - 44	12.6%
45 - 54	13.8%
55 - 64	16.7%
65 - 74	11.2%
75 - 84	4.1%
85 +	0.7%
18 +	79.2%
<b>2023 Population by Age</b>	
Total	280
0 - 4	5.4%
5 - 9	5.7%
10 - 14	6.4%
15 - 24	10.4%
25 - 34	11.1%
35 - 44	12.9%
45 - 54	12.1%
55 - 64	15.7%
65 - 74	13.6%
75 - 84	5.7%
85 +	1.1%
18 +	78.9%
<b>2010 Population by Sex</b>	
Males	135
Females	120
<b>2018 Population by Sex</b>	
Males	134
Females	135
<b>2023 Population by Sex</b>	
Males	139
Females	141

Source: U.S. Census Bureau, Census 2010 Summary File 1. Esri forecasts for 2018 and 2023 Esri converted Census 2000 data into 2010 geography.

February 14, 2019

	<b>McConnells to...</b>
<b>2010 Population by Race/Ethnicity</b>	
Total	255
White Alone	74.1%
Black Alone	25.5%
American Indian Alone	0.0%
Asian Alone	0.0%
Pacific Islander Alone	0.0%
Some Other Race Alone	0.0%
Two or More Races	0.4%
Hispanic Origin	0.8%
Diversity Index	39.5
<b>2018 Population by Race/Ethnicity</b>	
Total	267
White Alone	80.5%
Black Alone	16.1%
American Indian Alone	0.7%
Asian Alone	0.4%
Pacific Islander Alone	0.0%
Some Other Race Alone	0.7%
Two or More Races	1.5%
Hispanic Origin	2.2%
Diversity Index	35.5
<b>2023 Population by Race/Ethnicity</b>	
Total	281
White Alone	79.0%
Black Alone	17.1%
American Indian Alone	0.7%
Asian Alone	0.4%
Pacific Islander Alone	0.0%
Some Other Race Alone	1.1%
Two or More Races	1.8%
Hispanic Origin	3.2%
Diversity Index	38.7
<b>2010 Population by Relationship and Household Type</b>	
Total	255
In Households	100.0%
In Family Households	90.2%
Householder	30.2%
Spouse	24.3%
Child	33.7%
Other relative	1.6%
Nonrelative	0.4%
In Nonfamily Households	9.8%
In Group Quarters	0.0%
Institutionalized Population	0.0%
Noninstitutionalized Population	0.0%

**Data Note:** Persons of Hispanic Origin may be of any race. The Diversity Index measures the probability that two people from the same area will be from different race/ethnic groups.

**Source:** U.S. Census Bureau, Census 2010 Summary File 1. Esri forecasts for 2018 and 2023 Esri converted Census 2000 data into 2010 geography.

	<b>McConnells to...</b>
<b>2018 Population 25+ by Educational Attainment</b>	
Total	192
Less than 9th Grade	4.2%
9th - 12th Grade, No Diploma	13.0%
High School Graduate	35.4%
GED/Alternative Credential	5.7%
Some College, No Degree	18.8%
Associate Degree	8.9%
Bachelor's Degree	9.9%
Graduate/Professional Degree	4.2%
<b>2018 Population 15+ by Marital Status</b>	
Total	220
Never Married	26.4%
Married	60.0%
Widowed	5.9%
Divorced	7.7%
<b>2018 Civilian Population 16+ in Labor Force</b>	
Civilian Employed	93.4%
Civilian Unemployed (Unemployment Rate)	6.6%
<b>2018 Employed Population 16+ by Industry</b>	
Total	127
Agriculture/Mining	0.0%
Construction	15.1%
Manufacturing	15.1%
Wholesale Trade	0.8%
Retail Trade	15.9%
Transportation/Utilities	10.3%
Information	3.2%
Finance/Insurance/Real Estate	4.0%
Services	33.3%
Public Administration	2.4%
<b>2018 Employed Population 16+ by Occupation</b>	
Total	127
White Collar	41.7%
Management/Business/Financial	5.5%
Professional	8.7%
Sales	7.1%
Administrative Support	20.5%
Services	18.1%
Blue Collar	40.2%
Farming/Forestry/Fishing	0.0%
Construction/Extraction	15.7%
Installation/Maintenance/Repair	3.9%
Production	10.2%
Transportation/Material Moving	10.2%
<b>2010 Population By Urban/ Rural Status</b>	
Total Population	255
Population Inside Urbanized Area	0.0%
Population Inside Urbanized Cluster	0.0%
Rural Population	100.0%

Source: U.S. Census Bureau, Census 2010 Summary File 1. Esri forecasts for 2018 and 2023 Esri converted Census 2000 data into 2010 geography.

	<b>McConnells to...</b>
<b>2010 Households by Type</b>	
Total	100
Households with 1 Person	21.0%
Households with 2+ People	79.0%
Family Households	77.0%
Husband-wife Families	62.0%
With Related Children	19.0%
Other Family (No Spouse Present)	15.0%
Other Family with Male Householder	6.0%
With Related Children	2.0%
Other Family with Female Householder	9.0%
With Related Children	9.0%
Nonfamily Households	2.0%
All Households with Children	30.0%
Multigenerational Households	6.0%
Unmarried Partner Households	7.0%
Male-female	7.0%
Same-sex	0.0%
<b>2010 Households by Size</b>	
Total	100
1 Person Household	21.0%
2 Person Household	37.0%
3 Person Household	19.0%
4 Person Household	15.0%
5 Person Household	5.0%
6 Person Household	3.0%
7 + Person Household	0.0%
<b>2010 Households by Tenure and Mortgage Status</b>	
Total	100
Owner Occupied	82.0%
Owned with a Mortgage/Loan	59.0%
Owned Free and Clear	23.0%
Renter Occupied	18.0%
<b>2010 Housing Units By Urban/ Rural Status</b>	
Total Housing Units	109
Housing Units Inside Urbanized Area	0.0%
Housing Units Inside Urbanized Cluster	0.0%
Rural Housing Units	100.0%

**Data Note:** Households with children include any households with people under age 18, related or not. Multigenerational households are families with 3 or more parent-child relationships. Unmarried partner households are usually classified as nonfamily households unless there is another member of the household related to the householder. Multigenerational and unmarried partner households are reported only to the tract level. Esri estimated block group data, which is used to estimate polygons or non-standard geography.

**Source:** U.S. Census Bureau, Census 2010 Summary File 1. Esri forecasts for 2018 and 2023 Esri converted Census 2000 data into 2010 geography.

		<b>McConnells to...</b>
<b>Top 3 Tapestry Segments</b>		
	<b>1.</b>	Southern Satellites (10A)
	<b>2.</b>	Top Tier (1A)
	<b>3.</b>	Professional Pride (1B)
<b>2018 Consumer Spending</b>		
Apparel & Services: Total \$		\$182,796
Average Spent		\$1,740.92
Spending Potential Index		80
Education: Total \$		\$102,010
Average Spent		\$971.53
Spending Potential Index		67
Entertainment/Recreation: Total \$		\$279,635
Average Spent		\$2,663.19
Spending Potential Index		83
Food at Home: Total \$		\$441,995
Average Spent		\$4,209.48
Spending Potential Index		84
Food Away from Home: Total \$		\$299,972
Average Spent		\$2,856.88
Spending Potential Index		81
Health Care: Total \$		\$534,869
Average Spent		\$5,093.99
Spending Potential Index		89
HH Furnishings & Equipment: Total \$		\$177,624
Average Spent		\$1,691.66
Spending Potential Index		81
Personal Care Products & Services: Total \$		\$70,868
Average Spent		\$674.94
Spending Potential Index		82
Shelter: Total \$		\$1,297,447
Average Spent		\$12,356.64
Spending Potential Index		74
Support Payments/Cash Contributions/Gifts in Kind: Total \$		\$218,817
Average Spent		\$2,083.97
Spending Potential Index		84
Travel: Total \$		\$164,782
Average Spent		\$1,569.36
Spending Potential Index		73
Vehicle Maintenance & Repairs: Total \$		\$95,966
Average Spent		\$913.96
Spending Potential Index		85

**Data Note:** Consumer spending shows the amount spent on a variety of goods and services by households that reside in the area. Expenditures are shown by broad budget categories that are not mutually exclusive. Consumer spending does not equal business revenue. Total and Average Amount Spent Per Household represent annual figures. The Spending Potential Index represents the amount spent in the area relative to a national average of 100.

**Source:** Consumer Spending data are derived from the 2015 and 2016 Consumer Expenditure Surveys, Bureau of Labor Statistics. Esri.

**Source:** U.S. Census Bureau, Census 2010 Summary File 1. Esri forecasts for 2018 and 2023 Esri converted Census 2000 data into 2010 geography.