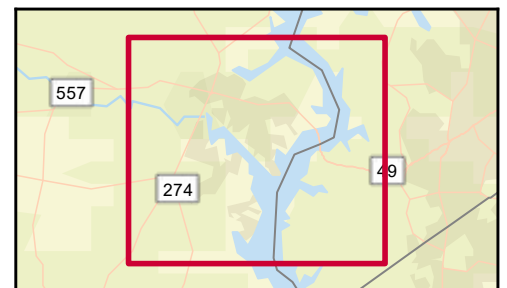
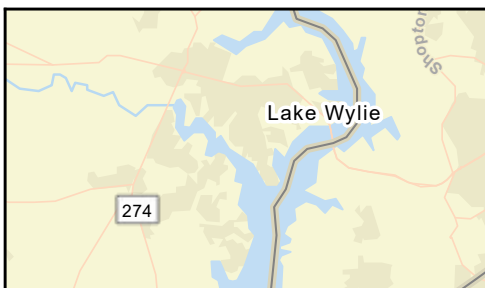
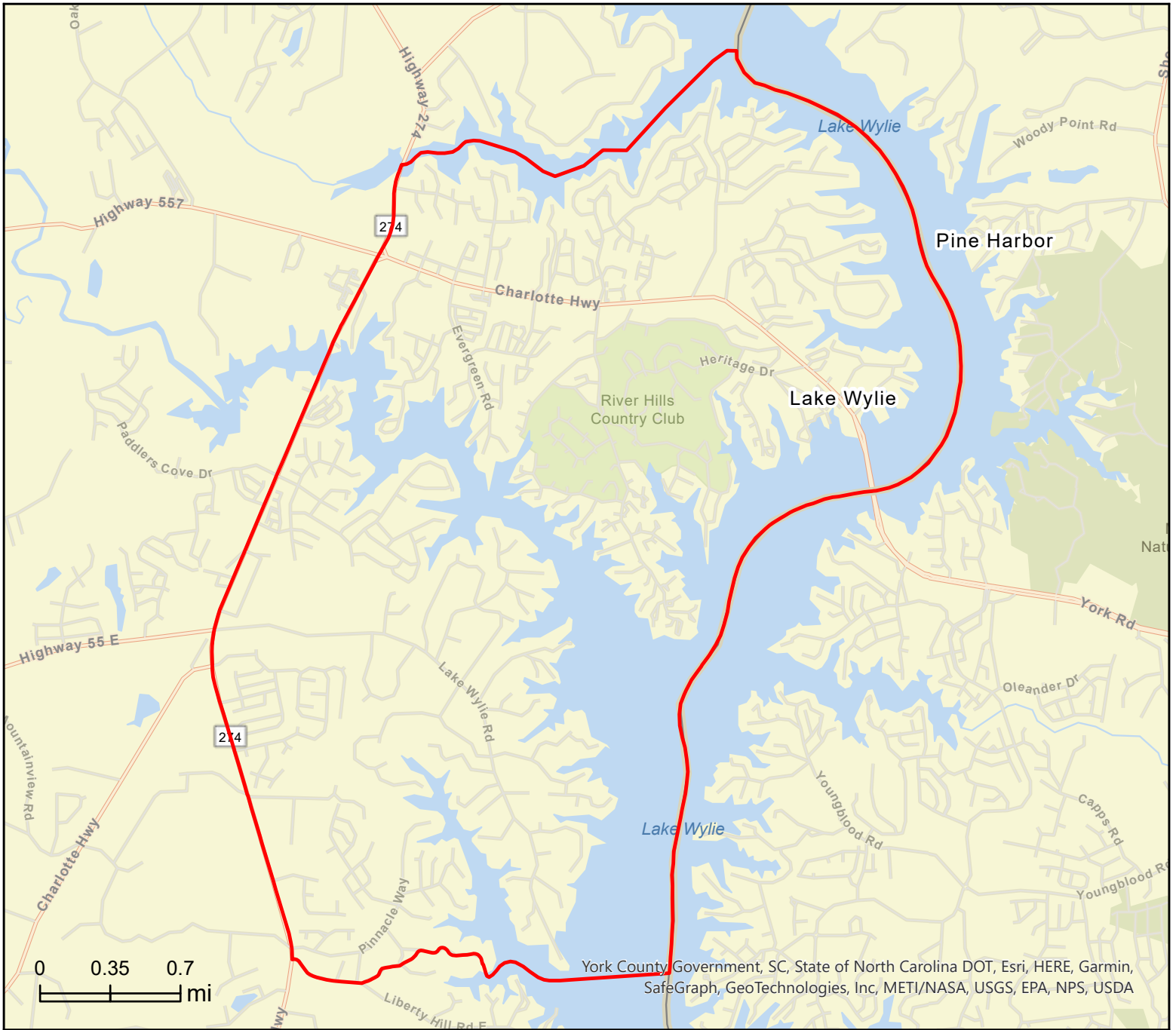


Lake Wylie CDP, SC (4539785)
Lake Wylie CDP, SC (4539785)
Geography: Place

Prepared by Esri





Community Profile

Lake Wylie CDP, SC (4539785)
 Lake Wylie CDP, SC (4539785)
 Geography: Place

Prepared by Esri

	Lake Wylie CD...
Population Summary	
2010 Total Population	8,858
2020 Total Population	13,655
2020 Group Quarters	0
2022 Total Population	15,449
2022 Group Quarters	0
2027 Total Population	16,097
2022-2027 Annual Rate	0.83%
2022 Total Daytime Population	11,897
Workers	3,745
Residents	8,152
Household Summary	
2010 Households	3,530
2010 Average Household Size	2.51
2020 Total Households	5,347
2020 Average Household Size	2.55
2022 Households	6,113
2022 Average Household Size	2.53
2027 Households	6,390
2027 Average Household Size	2.52
2022-2027 Annual Rate	0.89%
2010 Families	2,594
2010 Average Family Size	2.95
2022 Families	4,314
2022 Average Family Size	3.04
2027 Families	4,481
2027 Average Family Size	3.04
2022-2027 Annual Rate	0.76%
Housing Unit Summary	
2000 Housing Units	2,025
Owner Occupied Housing Units	75.9%
Renter Occupied Housing Units	12.2%
Vacant Housing Units	11.9%
2010 Housing Units	4,042
Owner Occupied Housing Units	68.6%
Renter Occupied Housing Units	18.7%
Vacant Housing Units	12.7%
2020 Housing Units	5,734
Vacant Housing Units	6.7%
2022 Housing Units	6,534
Owner Occupied Housing Units	73.9%
Renter Occupied Housing Units	19.6%
Vacant Housing Units	6.4%
2027 Housing Units	6,850
Owner Occupied Housing Units	75.2%
Renter Occupied Housing Units	18.1%
Vacant Housing Units	6.7%
Median Household Income	
2022	\$103,813
2027	\$120,113
Median Home Value	
2022	\$423,741
2027	\$447,880
Per Capita Income	
2022	\$53,931
2027	\$63,200
Median Age	
2010	40.4
2022	41.2
2027	40.1

Data Note: Household population includes persons not residing in group quarters. Average Household Size is the household population divided by total households. Persons in families include the householder and persons related to the householder by birth, marriage, or adoption. Per Capita Income represents the income received by all persons aged 15 years and over divided by the total population.

Source: Esri forecasts for 2022 and 2027. U.S. Census Bureau 2000 and 2010 decennial Census data converted by Esri into 2020 geography.



Community Profile

Lake Wylie CDP, SC (4539785)
 Lake Wylie CDP, SC (4539785)
 Geography: Place

Prepared by Esri

Lake Wylie CD...

2022 Households by Income

Household Income Base	6,112
<\$15,000	2.6%
\$15,000 - \$24,999	2.8%
\$25,000 - \$34,999	5.7%
\$35,000 - \$49,999	10.6%
\$50,000 - \$74,999	13.2%
\$75,000 - \$99,999	12.6%
\$100,000 - \$149,999	21.6%
\$150,000 - \$199,999	15.1%
\$200,000+	15.8%
Average Household Income	\$136,289

2027 Households by Income

Household Income Base	6,389
<\$15,000	1.9%
\$15,000 - \$24,999	2.0%
\$25,000 - \$34,999	3.6%
\$35,000 - \$49,999	8.6%
\$50,000 - \$74,999	10.7%
\$75,000 - \$99,999	12.1%
\$100,000 - \$149,999	21.8%
\$150,000 - \$199,999	19.9%
\$200,000+	19.3%
Average Household Income	\$159,198

2022 Owner Occupied Housing Units by Value

Total	4,833
<\$50,000	0.9%
\$50,000 - \$99,999	0.4%
\$100,000 - \$149,999	1.3%
\$150,000 - \$199,999	2.8%
\$200,000 - \$249,999	8.9%
\$250,000 - \$299,999	12.4%
\$300,000 - \$399,999	18.7%
\$400,000 - \$499,999	19.3%
\$500,000 - \$749,999	22.6%
\$750,000 - \$999,999	10.1%
\$1,000,000 - \$1,499,999	2.2%
\$1,500,000 - \$1,999,999	0.1%
\$2,000,000 +	0.3%
Average Home Value	\$479,387

2027 Owner Occupied Housing Units by Value

Total	5,151
<\$50,000	0.7%
\$50,000 - \$99,999	0.3%
\$100,000 - \$149,999	0.9%
\$150,000 - \$199,999	2.0%
\$200,000 - \$249,999	6.8%
\$250,000 - \$299,999	11.5%
\$300,000 - \$399,999	17.7%
\$400,000 - \$499,999	21.1%
\$500,000 - \$749,999	25.0%
\$750,000 - \$999,999	11.3%
\$1,000,000 - \$1,499,999	2.3%
\$1,500,000 - \$1,999,999	0.1%
\$2,000,000 +	0.3%
Average Home Value	\$501,199

Data Note: Income represents the preceding year, expressed in current dollars. Household income includes wage and salary earnings, interest dividends, net rents, pensions, SSI and welfare payments, child support, and alimony.

Source: Esri forecasts for 2022 and 2027. U.S. Census Bureau 2000 and 2010 decennial Census data converted by Esri into 2020 geography.



Community Profile

Lake Wylie CDP, SC (4539785)
Lake Wylie CDP, SC (4539785)
Geography: Place

Prepared by Esri

Lake Wylie CD...

2010 Population by Age	
Total	8,858
0 - 4	6.7%
5 - 9	7.9%
10 - 14	7.9%
15 - 24	8.1%
25 - 34	10.1%
35 - 44	17.4%
45 - 54	14.8%
55 - 64	12.8%
65 - 74	9.1%
75 - 84	4.1%
85 +	1.1%
18 +	73.7%
2022 Population by Age	
Total	15,452
0 - 4	6.1%
5 - 9	7.0%
10 - 14	7.5%
15 - 24	12.1%
25 - 34	9.8%
35 - 44	12.7%
45 - 54	15.0%
55 - 64	12.3%
65 - 74	10.0%
75 - 84	5.9%
85 +	1.5%
18 +	75.1%
2027 Population by Age	
Total	16,098
0 - 4	6.3%
5 - 9	7.0%
10 - 14	7.3%
15 - 24	11.0%
25 - 34	12.5%
35 - 44	12.0%
45 - 54	13.5%
55 - 64	11.7%
65 - 74	9.8%
75 - 84	6.9%
85 +	1.9%
18 +	75.4%
2010 Population by Sex	
Males	4,374
Females	4,484
2022 Population by Sex	
Males	7,554
Females	7,898
2027 Population by Sex	
Males	7,840
Females	8,258

Source: Esri forecasts for 2022 and 2027. U.S. Census Bureau 2000 and 2010 decennial Census data converted by Esri into 2020 geography.



Community Profile

Lake Wylie CDP, SC (4539785)
 Lake Wylie CDP, SC (4539785)
 Geography: Place

Prepared by Esri

Lake Wylie CD...

2010 Population by Race/Ethnicity	
Total	8,860
White Alone	88.6%
Black Alone	7.1%
American Indian Alone	0.3%
Asian Alone	1.4%
Pacific Islander Alone	0.1%
Some Other Race Alone	0.9%
Two or More Races	1.5%
Hispanic Origin	3.9%
Diversity Index	26.8
2020 Population by Race/Ethnicity	
Total	13,655
White Alone	78.1%
Black Alone	9.7%
American Indian Alone	0.4%
Asian Alone	1.6%
Pacific Islander Alone	0.0%
Some Other Race Alone	2.5%
Two or More Races	7.6%
Hispanic Origin	6.2%
Diversity Index	44.7
2022 Population by Race/Ethnicity	
Total	15,450
White Alone	77.4%
Black Alone	10.0%
American Indian Alone	0.4%
Asian Alone	1.6%
Pacific Islander Alone	0.0%
Some Other Race Alone	2.6%
Two or More Races	8.0%
Hispanic Origin	6.4%
Diversity Index	45.7
2027 Population by Race/Ethnicity	
Total	16,099
White Alone	76.3%
Black Alone	10.3%
American Indian Alone	0.4%
Asian Alone	1.6%
Pacific Islander Alone	0.0%
Some Other Race Alone	2.7%
Two or More Races	8.7%
Hispanic Origin	6.5%
Diversity Index	47.2
2010 Population by Relationship and Household Type	
Total	8,858
In Households	100.0%
In Family Households	87.3%
Householder	29.3%
Spouse	25.1%
Child	30.1%
Other relative	1.8%
Nonrelative	1.0%
In Nonfamily Households	12.7%
In Group Quarters	0.0%
Institutionalized Population	0.0%
Noninstitutionalized Population	0.0%

Data Note: Persons of Hispanic Origin may be of any race. The Diversity Index measures the probability that two people from the same area will be from different race/ethnic groups.

Source: Esri forecasts for 2022 and 2027. U.S. Census Bureau 2000 and 2010 decennial Census data converted by Esri into 2020 geography.

March 01, 2023



Community Profile

Lake Wylie CDP, SC (4539785)
 Lake Wylie CDP, SC (4539785)
 Geography: Place

Prepared by Esri

	Lake Wylie CD...
2022 Population 25+ by Educational Attainment	
Total	10,395
Less than 9th Grade	1.0%
9th - 12th Grade, No Diploma	1.4%
High School Graduate	13.6%
GED/Alternative Credential	2.0%
Some College, No Degree	17.5%
Associate Degree	11.8%
Bachelor's Degree	34.1%
Graduate/Professional Degree	18.7%
2022 Population 15+ by Marital Status	
Total	12,268
Never Married	21.5%
Married	64.8%
Widowed	4.8%
Divorced	8.9%
2022 Civilian Population 16+ in Labor Force	
Civilian Population 16+	7,712
Population 16+ Employed	96.0%
Population 16+ Unemployment rate	4.0%
Population 16-24 Employed	12.3%
Population 16-24 Unemployment rate	14.1%
Population 25-54 Employed	66.4%
Population 25-54 Unemployment rate	2.0%
Population 55-64 Employed	16.2%
Population 55-64 Unemployment rate	0.4%
Population 65+ Employed	5.1%
Population 65+ Unemployment rate	12.7%
2022 Employed Population 16+ by Industry	
Total	7,403
Agriculture/Mining	0.4%
Construction	4.7%
Manufacturing	11.9%
Wholesale Trade	3.7%
Retail Trade	8.6%
Transportation/Utilities	9.7%
Information	1.0%
Finance/Insurance/Real Estate	10.8%
Services	47.9%
Public Administration	1.2%
2022 Employed Population 16+ by Occupation	
Total	7,404
White Collar	72.6%
Management/Business/Financial	26.8%
Professional	24.4%
Sales	10.8%
Administrative Support	10.7%
Services	11.9%
Blue Collar	15.5%
Farming/Forestry/Fishing	0.0%
Construction/Extraction	2.8%
Installation/Maintenance/Repair	2.8%
Production	2.4%
Transportation/Material Moving	7.4%

Source: Esri forecasts for 2022 and 2027. U.S. Census Bureau 2000 and 2010 decennial Census data converted by Esri into 2020 geography.

March 01, 2023



Community Profile

Lake Wylie CDP, SC (4539785)
 Lake Wylie CDP, SC (4539785)
 Geography: Place

Prepared by Esri

	Lake Wylie CD...
2010 Households by Type	
Total	3,530
Households with 1 Person	21.8%
Households with 2+ People	78.2%
Family Households	73.5%
Husband-wife Families	62.8%
With Related Children	28.0%
Other Family (No Spouse Present)	10.7%
Other Family with Male Householder	3.0%
With Related Children	2.0%
Other Family with Female Householder	7.6%
With Related Children	5.7%
Nonfamily Households	4.7%
All Households with Children	36.1%
Multigenerational Households	2.3%
Unmarried Partner Households	4.3%
Male-female	3.7%
Same-sex	0.7%
2010 Households by Size	
Total	3,530
1 Person Household	21.8%
2 Person Household	39.3%
3 Person Household	15.6%
4 Person Household	15.4%
5 Person Household	5.5%
6 Person Household	1.9%
7 + Person Household	0.4%
2010 Households by Tenure and Mortgage Status	
Total	3,530
Owner Occupied	78.6%
Owned with a Mortgage/Loan	64.0%
Owned Free and Clear	14.6%
Renter Occupied	21.4%
2022 Affordability, Mortgage and Wealth	
Housing Affordability Index	120
Percent of Income for Mortgage	21.5%
Wealth Index	147
2010 Housing Units By Urban/ Rural Status	
Total Housing Units	4,042
Housing Units Inside Urbanized Area	95.1%
Housing Units Inside Urbanized Cluster	0.0%
Rural Housing Units	4.9%
2010 Population By Urban/ Rural Status	
Total Population	8,858
Population Inside Urbanized Area	96.2%
Population Inside Urbanized Cluster	0.0%
Rural Population	3.8%

Data Note: Households with children include any households with people under age 18, related or not. Multigenerational households are families with 3 or more parent-child relationships. Unmarried partner households are usually classified as nonfamily households unless there is another member of the household related to the householder. Multigenerational and unmarried partner households are reported only to the tract level. Esri estimated block group data, which is used to estimate polygons or non-standard geography.

Source: Esri forecasts for 2022 and 2027. U.S. Census Bureau 2000 and 2010 decennial Census data converted by Esri into 2020 geography.



Community Profile

Lake Wylie CDP, SC (4539785)
 Lake Wylie CDP, SC (4539785)
 Geography: Place

Prepared by Esri

	Lake Wylie CD...
Top 3 Tapestry Segments	
1.	Middleburg (4C)
2.	Boomburbs (1C)
3.	Exurbanites (1E)
2022 Consumer Spending	
Apparel & Services: Total \$	\$18,551,182
Average Spent	\$3,034.71
Spending Potential Index	126
Education: Total \$	\$14,789,855
Average Spent	\$2,419.41
Spending Potential Index	123
Entertainment/Recreation: Total \$	\$28,666,373
Average Spent	\$4,689.41
Spending Potential Index	128
Food at Home: Total \$	\$46,256,715
Average Spent	\$7,566.94
Spending Potential Index	122
Food Away from Home: Total \$	\$33,505,105
Average Spent	\$5,480.96
Spending Potential Index	127
Health Care: Total \$	\$54,856,474
Average Spent	\$8,973.74
Spending Potential Index	127
HH Furnishings & Equipment: Total \$	\$20,652,127
Average Spent	\$3,378.39
Spending Potential Index	132
Personal Care Products & Services: Total \$	\$7,976,709
Average Spent	\$1,304.88
Spending Potential Index	128
Shelter: Total \$	\$176,704,798
Average Spent	\$28,906.40
Spending Potential Index	126
Support Payments/Cash Contributions/Gifts in Kind: Total \$	\$23,240,619
Average Spent	\$3,801.84
Spending Potential Index	140
Travel: Total \$	\$23,873,994
Average Spent	\$3,905.45
Spending Potential Index	136
Vehicle Maintenance & Repairs: Total \$	\$9,765,942
Average Spent	\$1,597.57
Spending Potential Index	127

Data Note: Consumer spending shows the amount spent on a variety of goods and services by households that reside in the area. Expenditures are shown by broad budget categories that are not mutually exclusive. Consumer spending does not equal business revenue. Total and Average Amount Spent Per Household represent annual figures. The Spending Potential Index represents the amount spent in the area relative to a national average of 100.

Source: Consumer Spending data are derived from the 2018 and 2019 Consumer Expenditure Surveys, Bureau of Labor Statistics. Esri.

Source: Esri forecasts for 2022 and 2027. U.S. Census Bureau 2000 and 2010 decennial Census data converted by Esri into 2020 geography.