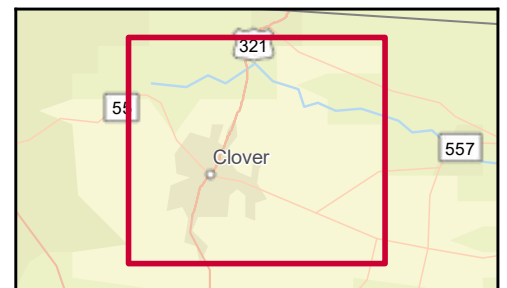
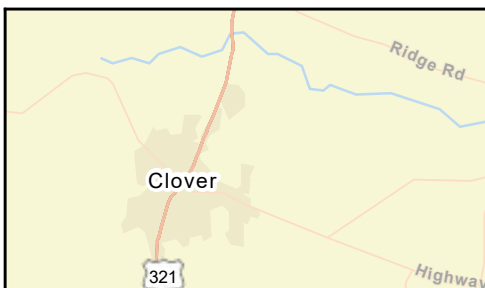
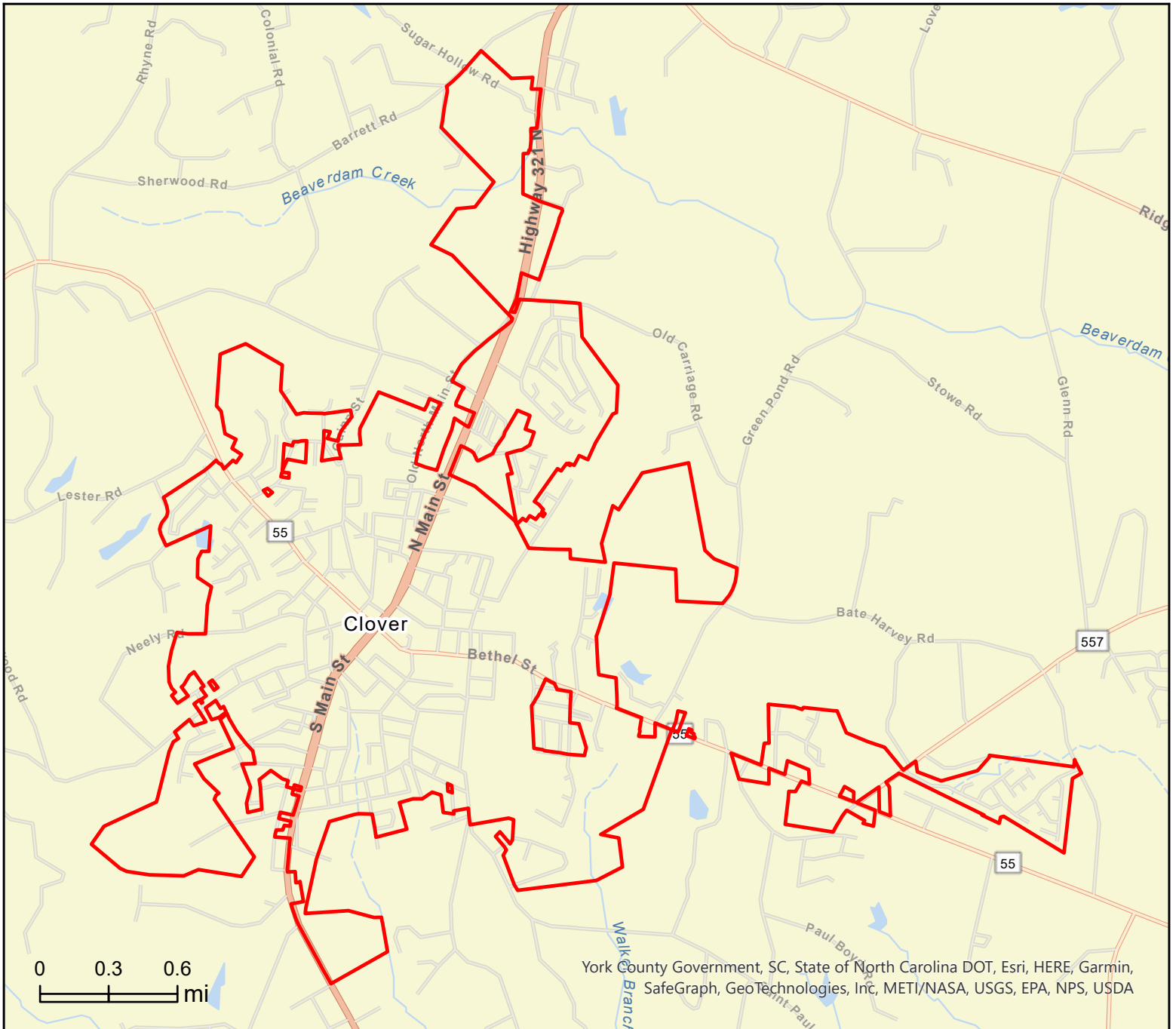


Clover town, SC (4515355)  
Clover town, SC (4515355)  
Geography: Place

Prepared by Esri





# Community Profile

Clover town, SC (4515355)  
Clover town, SC (4515355)  
Geography: Place

Prepared by Esri

Clover town, ...

Population Summary	
2010 Total Population	5,685
2020 Total Population	6,671
2020 Group Quarters	4
2022 Total Population	6,941
2022 Group Quarters	4
2027 Total Population	7,327
2022-2027 Annual Rate	1.09%
2022 Total Daytime Population	6,559
Workers	2,946
Residents	3,613
Household Summary	
2010 Households	2,104
2010 Average Household Size	2.70
2020 Total Households	2,447
2020 Average Household Size	2.72
2022 Households	2,551
2022 Average Household Size	2.72
2027 Households	2,698
2027 Average Household Size	2.71
2022-2027 Annual Rate	1.13%
2010 Families	1,495
2010 Average Family Size	3.20
2022 Families	1,733
2022 Average Family Size	3.31
2027 Families	1,827
2027 Average Family Size	3.31
2022-2027 Annual Rate	1.06%
Housing Unit Summary	
2000 Housing Units	1,780
Owner Occupied Housing Units	65.2%
Renter Occupied Housing Units	27.5%
Vacant Housing Units	7.2%
2010 Housing Units	2,311
Owner Occupied Housing Units	63.1%
Renter Occupied Housing Units	27.9%
Vacant Housing Units	9.0%
2020 Housing Units	2,619
Vacant Housing Units	6.6%
2022 Housing Units	2,711
Owner Occupied Housing Units	68.4%
Renter Occupied Housing Units	25.7%
Vacant Housing Units	5.9%
2027 Housing Units	2,877
Owner Occupied Housing Units	68.3%
Renter Occupied Housing Units	25.5%
Vacant Housing Units	6.2%
Median Household Income	
2022	\$63,098
2027	\$74,735
Median Home Value	
2022	\$217,479
2027	\$231,864
Per Capita Income	
2022	\$32,025
2027	\$37,207
Median Age	
2010	35.9
2022	37.6
2027	38.6

**Data Note:** Household population includes persons not residing in group quarters. Average Household Size is the household population divided by total households. Persons in families include the householder and persons related to the householder by birth, marriage, or adoption. Per Capita Income represents the income received by all persons aged 15 years and over divided by the total population.

**Source:** Esri forecasts for 2022 and 2027. U.S. Census Bureau 2000 and 2010 decennial Census data converted by Esri into 2020 geography.

March 01, 2023



# Community Profile

Clover town, SC (4515355)  
 Clover town, SC (4515355)  
 Geography: Place

Prepared by Esri

**Clover town, ...**

## 2022 Households by Income

Household Income Base	2,550
<\$15,000	4.4%
\$15,000 - \$24,999	12.0%
\$25,000 - \$34,999	10.7%
\$35,000 - \$49,999	12.9%
\$50,000 - \$74,999	16.4%
\$75,000 - \$99,999	15.1%
\$100,000 - \$149,999	14.1%
\$150,000 - \$199,999	10.8%
\$200,000+	3.6%
Average Household Income	\$85,647

## 2027 Households by Income

Household Income Base	2,698
<\$15,000	3.0%
\$15,000 - \$24,999	8.4%
\$25,000 - \$34,999	7.8%
\$35,000 - \$49,999	10.8%
\$50,000 - \$74,999	20.2%
\$75,000 - \$99,999	17.2%
\$100,000 - \$149,999	14.5%
\$150,000 - \$199,999	13.8%
\$200,000+	4.4%
Average Household Income	\$99,391

## 2022 Owner Occupied Housing Units by Value

Total	1,855
<\$50,000	7.2%
\$50,000 - \$99,999	8.4%
\$100,000 - \$149,999	8.7%
\$150,000 - \$199,999	19.0%
\$200,000 - \$249,999	19.4%
\$250,000 - \$299,999	11.4%
\$300,000 - \$399,999	10.6%
\$400,000 - \$499,999	4.6%
\$500,000 - \$749,999	5.7%
\$750,000 - \$999,999	1.8%
\$1,000,000 - \$1,499,999	3.3%
\$1,500,000 - \$1,999,999	0.0%
\$2,000,000 +	0.0%
Average Home Value	\$277,817

## 2027 Owner Occupied Housing Units by Value

Total	1,963
<\$50,000	6.5%
\$50,000 - \$99,999	8.0%
\$100,000 - \$149,999	7.5%
\$150,000 - \$199,999	16.8%
\$200,000 - \$249,999	17.6%
\$250,000 - \$299,999	12.2%
\$300,000 - \$399,999	11.6%
\$400,000 - \$499,999	6.0%
\$500,000 - \$749,999	7.3%
\$750,000 - \$999,999	2.3%
\$1,000,000 - \$1,499,999	4.2%
\$1,500,000 - \$1,999,999	0.0%
\$2,000,000 +	0.0%
Average Home Value	\$305,833

**Data Note:** Income represents the preceding year, expressed in current dollars. Household income includes wage and salary earnings, interest dividends, net rents, pensions, SSI and welfare payments, child support, and alimony.

**Source:** Esri forecasts for 2022 and 2027. U.S. Census Bureau 2000 and 2010 decennial Census data converted by Esri into 2020 geography.

March 01, 2023



# Community Profile

Clover town, SC (4515355)  
 Clover town, SC (4515355)  
 Geography: Place

Prepared by Esri

**Clover town, ...**

2010 Population by Age	
Total	5,687
0 - 4	7.2%
5 - 9	7.5%
10 - 14	8.2%
15 - 24	13.4%
25 - 34	12.4%
35 - 44	14.8%
45 - 54	14.4%
55 - 64	11.2%
65 - 74	6.4%
75 - 84	3.3%
85 +	1.1%
18 +	72.6%
2022 Population by Age	
Total	6,943
0 - 4	6.5%
5 - 9	7.1%
10 - 14	7.2%
15 - 24	12.0%
25 - 34	13.7%
35 - 44	13.3%
45 - 54	12.9%
55 - 64	12.7%
65 - 74	9.5%
75 - 84	4.0%
85 +	1.1%
18 +	75.3%
2027 Population by Age	
Total	7,329
0 - 4	6.4%
5 - 9	6.9%
10 - 14	7.6%
15 - 24	11.7%
25 - 34	12.3%
35 - 44	14.0%
45 - 54	12.2%
55 - 64	12.4%
65 - 74	10.2%
75 - 84	5.1%
85 +	1.2%
18 +	75.0%
2010 Population by Sex	
Males	2,780
Females	2,906
2022 Population by Sex	
Males	3,432
Females	3,511
2027 Population by Sex	
Males	3,634
Females	3,695

Source: Esri forecasts for 2022 and 2027. U.S. Census Bureau 2000 and 2010 decennial Census data converted by Esri into 2020 geography.



# Community Profile

Clover town, SC (4515355)  
 Clover town, SC (4515355)  
 Geography: Place

Prepared by Esri

Clover town, ...

2010 Population by Race/Ethnicity	
Total	5,685
White Alone	77.8%
Black Alone	18.1%
American Indian Alone	0.4%
Asian Alone	0.8%
Pacific Islander Alone	0.0%
Some Other Race Alone	1.2%
Two or More Races	1.7%
Hispanic Origin	4.0%
Diversity Index	41.0
2020 Population by Race/Ethnicity	
Total	6,671
White Alone	70.0%
Black Alone	17.4%
American Indian Alone	0.4%
Asian Alone	1.0%
Pacific Islander Alone	0.0%
Some Other Race Alone	3.2%
Two or More Races	8.0%
Hispanic Origin	7.3%
Diversity Index	54.4
2022 Population by Race/Ethnicity	
Total	6,941
White Alone	71.7%
Black Alone	16.6%
American Indian Alone	0.4%
Asian Alone	0.9%
Pacific Islander Alone	0.0%
Some Other Race Alone	3.0%
Two or More Races	7.5%
Hispanic Origin	6.6%
Diversity Index	52.0
2027 Population by Race/Ethnicity	
Total	7,326
White Alone	70.4%
Black Alone	17.3%
American Indian Alone	0.4%
Asian Alone	0.9%
Pacific Islander Alone	0.0%
Some Other Race Alone	3.1%
Two or More Races	8.1%
Hispanic Origin	6.7%
Diversity Index	53.4
2010 Population by Relationship and Household Type	
Total	5,685
In Households	99.8%
In Family Households	86.6%
Householder	26.6%
Spouse	17.9%
Child	35.3%
Other relative	4.3%
Nonrelative	2.6%
In Nonfamily Households	13.1%
In Group Quarters	0.2%
Institutionalized Population	0.0%
Noninstitutionalized Population	0.2%

**Data Note:** Persons of Hispanic Origin may be of any race. The Diversity Index measures the probability that two people from the same area will be from different race/ethnic groups.

**Source:** Esri forecasts for 2022 and 2027. U.S. Census Bureau 2000 and 2010 decennial Census data converted by Esri into 2020 geography.

March 01, 2023



# Community Profile

Clover town, SC (4515355)  
 Clover town, SC (4515355)  
 Geography: Place

Prepared by Esri

	Clover town, ...
<b>2022 Population 25+ by Educational Attainment</b>	
Total	4,666
Less than 9th Grade	6.3%
9th - 12th Grade, No Diploma	7.8%
High School Graduate	23.3%
GED/Alternative Credential	7.0%
Some College, No Degree	22.7%
Associate Degree	9.6%
Bachelor's Degree	15.9%
Graduate/Professional Degree	7.4%
<b>2022 Population 15+ by Marital Status</b>	
Total	5,498
Never Married	31.0%
Married	52.3%
Widowed	6.1%
Divorced	10.6%
<b>2022 Civilian Population 16+ in Labor Force</b>	
Civilian Population 16+	3,551
Population 16+ Employed	95.2%
Population 16+ Unemployment rate	4.8%
Population 16-24 Employed	12.5%
Population 16-24 Unemployment rate	7.8%
Population 25-54 Employed	65.7%
Population 25-54 Unemployment rate	4.5%
Population 55-64 Employed	16.4%
Population 55-64 Unemployment rate	5.0%
Population 65+ Employed	5.4%
Population 65+ Unemployment rate	0.0%
<b>2022 Employed Population 16+ by Industry</b>	
Total	3,381
Agriculture/Mining	0.3%
Construction	4.2%
Manufacturing	15.9%
Wholesale Trade	3.2%
Retail Trade	13.8%
Transportation/Utilities	13.4%
Information	2.8%
Finance/Insurance/Real Estate	6.7%
Services	37.8%
Public Administration	2.2%
<b>2022 Employed Population 16+ by Occupation</b>	
Total	3,381
White Collar	57.4%
Management/Business/Financial	12.7%
Professional	21.3%
Sales	9.7%
Administrative Support	13.7%
Services	14.7%
Blue Collar	27.9%
Farming/Forestry/Fishing	0.1%
Construction/Extraction	1.9%
Installation/Maintenance/Repair	6.3%
Production	9.7%
Transportation/Material Moving	9.9%

Source: Esri forecasts for 2022 and 2027. U.S. Census Bureau 2000 and 2010 decennial Census data converted by Esri into 2020 geography.

March 01, 2023

	Clover town, ...
<b>2010 Households by Type</b>	
Total	2,103
Households with 1 Person	24.4%
Households with 2+ People	75.6%
Family Households	71.1%
Husband-wife Families	47.7%
With Related Children	22.7%
Other Family (No Spouse Present)	23.4%
Other Family with Male Householder	6.0%
With Related Children	3.6%
Other Family with Female Householder	17.4%
With Related Children	12.0%
Nonfamily Households	4.5%
All Households with Children	38.8%
Multigenerational Households	5.3%
Unmarried Partner Households	6.7%
Male-female	5.9%
Same-sex	0.8%
<b>2010 Households by Size</b>	
Total	2,102
1 Person Household	24.5%
2 Person Household	30.4%
3 Person Household	17.9%
4 Person Household	15.3%
5 Person Household	7.6%
6 Person Household	2.9%
7 + Person Household	1.5%
<b>2010 Households by Tenure and Mortgage Status</b>	
Total	2,104
Owner Occupied	69.3%
Owned with a Mortgage/Loan	49.1%
Owned Free and Clear	20.2%
Renter Occupied	30.7%
<b>2022 Affordability, Mortgage and Wealth</b>	
Housing Affordability Index	146
Percent of Income for Mortgage	18.2%
Wealth Index	67
<b>2010 Housing Units By Urban/ Rural Status</b>	
Total Housing Units	2,311
Housing Units Inside Urbanized Area	0.0%
Housing Units Inside Urbanized Cluster	75.4%
Rural Housing Units	24.6%
<b>2010 Population By Urban/ Rural Status</b>	
Total Population	5,685
Population Inside Urbanized Area	0.0%
Population Inside Urbanized Cluster	75.6%
Rural Population	24.4%

**Data Note:** Households with children include any households with people under age 18, related or not. Multigenerational households are families with 3 or more parent-child relationships. Unmarried partner households are usually classified as nonfamily households unless there is another member of the household related to the householder. Multigenerational and unmarried partner households are reported only to the tract level. Esri estimated block group data, which is used to estimate polygons or non-standard geography.

**Source:** Esri forecasts for 2022 and 2027. U.S. Census Bureau 2000 and 2010 decennial Census data converted by Esri into 2020 geography.



# Community Profile

Clover town, SC (4515355)  
Clover town, SC (4515355)  
Geography: Place

Prepared by Esri

## Clover town, ...

### Top 3 Tapestry Segments

1. Southern Satellites (10A)
2. Urban Edge Families (7C)
3. Modest Income Homes (12D)

### 2022 Consumer Spending

Apparel & Services: Total \$	\$5,018,565
Average Spent	\$1,967.29
Spending Potential Index	82
Education: Total \$	\$3,561,571
Average Spent	\$1,396.15
Spending Potential Index	71
Entertainment/Recreation: Total \$	\$7,753,716
Average Spent	\$3,039.48
Spending Potential Index	83
Food at Home: Total \$	\$13,291,696
Average Spent	\$5,210.39
Spending Potential Index	84
Food Away from Home: Total \$	\$9,150,245
Average Spent	\$3,586.92
Spending Potential Index	83
Health Care: Total \$	\$15,810,397
Average Spent	\$6,197.73
Spending Potential Index	87
HH Furnishings & Equipment: Total \$	\$5,482,250
Average Spent	\$2,149.06
Spending Potential Index	84
Personal Care Products & Services: Total \$	\$2,136,070
Average Spent	\$837.35
Spending Potential Index	82
Shelter: Total \$	\$45,403,192
Average Spent	\$17,798.19
Spending Potential Index	78
Support Payments/Cash Contributions/Gifts in Kind: Total \$	\$5,853,113
Average Spent	\$2,294.44
Spending Potential Index	84
Travel: Total \$	\$5,804,065
Average Spent	\$2,275.21
Spending Potential Index	79
Vehicle Maintenance & Repairs: Total \$	\$2,767,995
Average Spent	\$1,085.06
Spending Potential Index	86

**Data Note:** Consumer spending shows the amount spent on a variety of goods and services by households that reside in the area. Expenditures are shown by broad budget categories that are not mutually exclusive. Consumer spending does not equal business revenue. Total and Average Amount Spent Per Household represent annual figures. The Spending Potential Index represents the amount spent in the area relative to a national average of 100.

**Source:** Consumer Spending data are derived from the 2018 and 2019 Consumer Expenditure Surveys, Bureau of Labor Statistics. Esri.

**Source:** Esri forecasts for 2022 and 2027. U.S. Census Bureau 2000 and 2010 decennial Census data converted by Esri into 2020 geography.

March 01, 2023