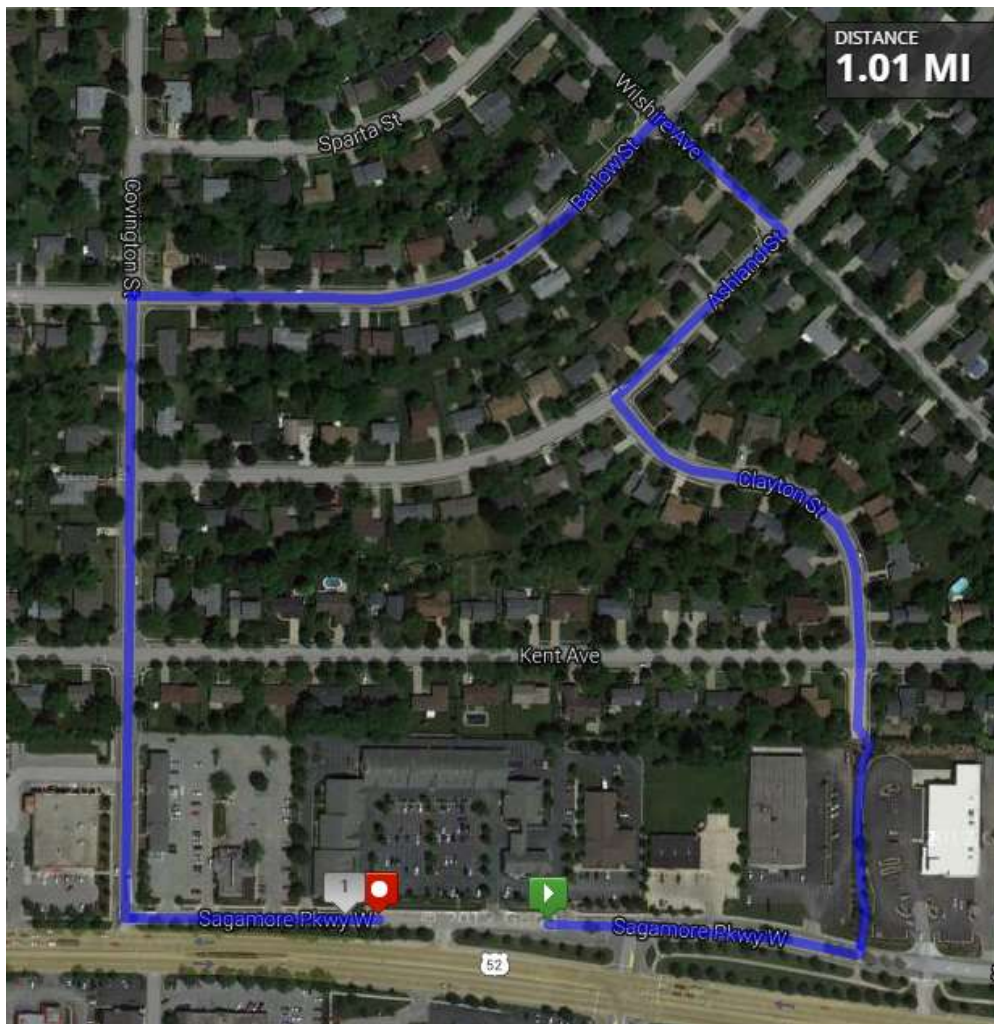


FLEET FEET Running Club

WEST LAFAYETTE

Course in map view



Barlow 1.01

Start: Flower bed by 5/3 Bank

1. Turn LEFT, go to Aldi
2. LEFT turn onto path to Kent
3. Cross Kent and continue on Clayton
4. Turn RIGHT at Ashland to Wilshire
5. LEFT at Wilshire to Barlow
6. Turn LEFT at Barlow to Covington
7. LEFT at Covington to CVS
8. Turn LEFT at frontage road to Talbots
9. Finish on sidewalk just pass Talbots - **Stop**

Start and Finish area

